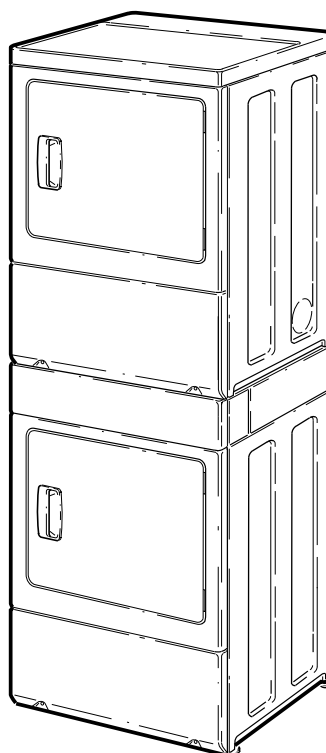
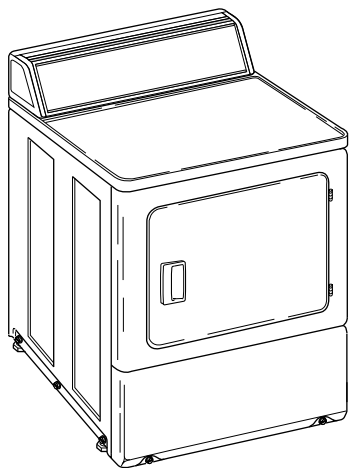
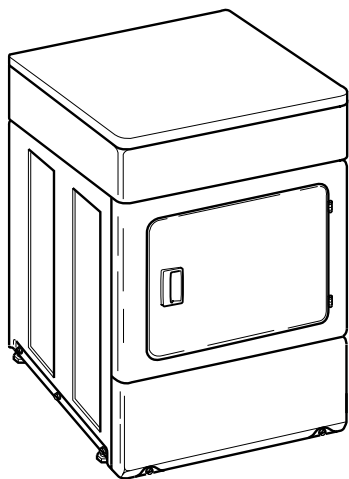


Dryers

Homestyle

Refer to Page 3 for Model Numbers



DRY691C_512030

Table of Contents

Title	Page
Parts Ordering Information.....	2
Serial Plate Location	2
Model Identification	3
Control Panel and Controls - Rear Control	4
Control Panel and Controls - Front Control.....	6
Control Panel and Controls - Stacked Models	8
Loading Door - With Window	10
Loading Door - Without Window	12
Access Panel, Front Panel and Seal	14
Motor, Exhaust Fan and Belt	16
Front Bulkhead, Air Duct, Felt Seal and Cylinder	18
Rear Bulkhead, Felt Seal, Cylinder Roller and Terminal Block.....	20
Heater Duct and Element Assembly	22
Heater Duct Assembly	24
Gas Valve, Igniter and Gas Conversion Kits.....	26
Cabinet, Exhaust Duct and Base - Single Dryers	28
Cabinet, Exhaust Duct and Base - Stacked Dryers	30
Lead-In Cord	32
Terminal Block and Terminals	34
Terminals	36
Terminals and Terminal Extractor Tools	38
Wire Harnesses and Wires - Stack Models (Drawing 1 of 3).....	40
Wire Harnesses and Wires - Stack Models (Drawing 2 of 3).....	42
Wire Harnesses and Wires - Stack Models (Drawing 3 of 3).....	44
Wire Harnesses and Wires - Front Control Models (Drawing 1 of 3).....	46
Wire Harnesses and Wires - Front Control Models (Drawing 2 of 3).....	48
Wire Harnesses and Wires - Front Control Models (Drawing 3 of 3).....	50
Wire Harnesses and Wires - Rear Control Models Through Serial No. 1207	52
Wire Harnesses and Wires - Rear Control Models Starting Serial No. 1207	54
Parts Index.....	57

© Copyright 2015, Alliance Laundry Systems LLC

All rights reserved. No part of the contents of this book may be reproduced or transmitted in any form or by any means without the expressed written consent of the publisher.

Parts Ordering Information

If literature or replacement parts are required, contact the source from whom the machine was purchased or contact Alliance Laundry Systems at (920) 748-3950 for the name and address of the nearest authorized parts distributor.

For technical assistance, call either of the numbers listed below:

(920) 748-3121 Ripon, Wisconsin

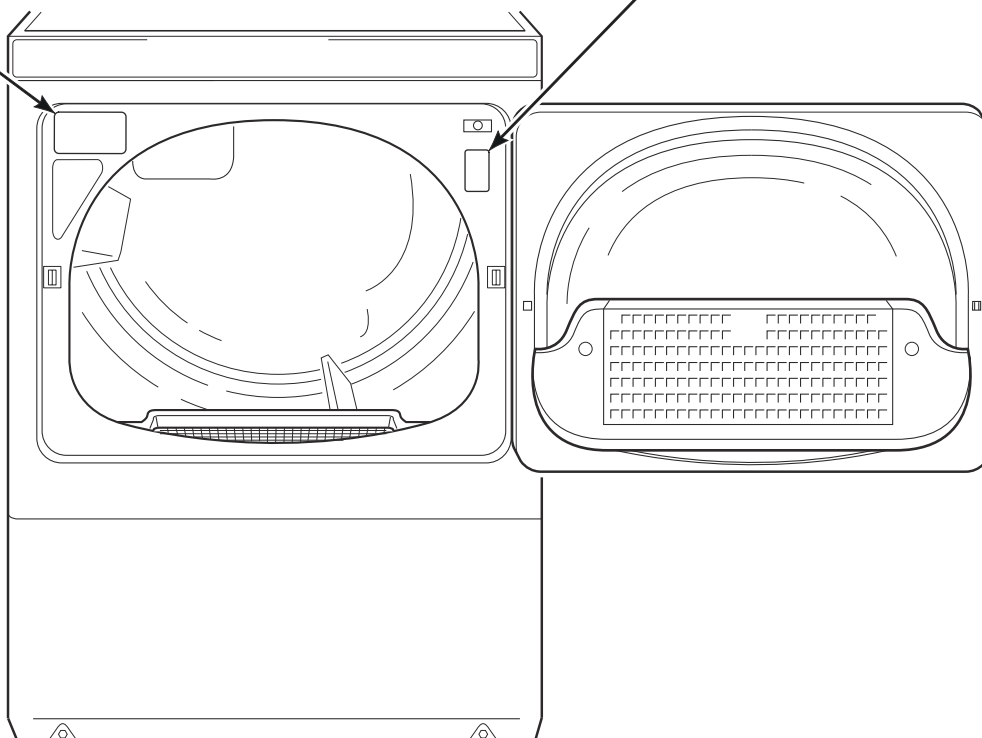
+32 56 41 20 54 Wevelgem, Belgium

Serial Plate Location

When calling or writing about your product, be sure to mention model and serial numbers. Model and serial numbers are located on serial plate(s) as shown.

Serial Plate
(Models starting Serial No. 1206025810)

Serial Plate
(Models through Serial No. 1206025809)



DRY2283P_512030

Model Identification

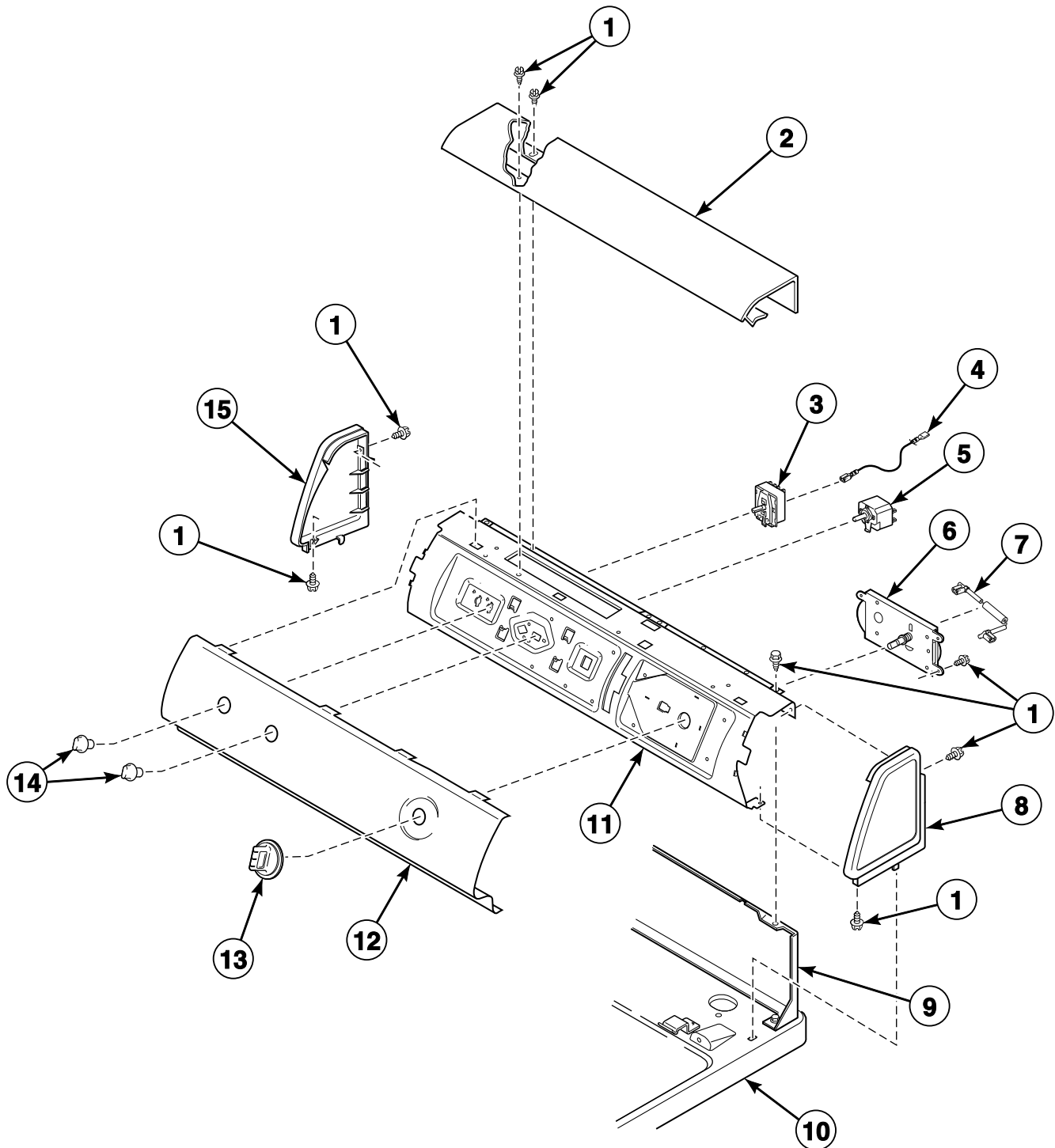
Information in this manual is applicable to these dryer models:

BDE30FGS171TW01	KES17A*F	LDE30RGS153TW01	UDE30FGS171TW08
BDG30FGS111TW01	KES17A*F1500	LDE30RGS173TW01	
FES17A*F	KGS17A*F	LDG30RGS113TW01	
FES17A*F1500		LES17A*F	
FEU17A*F		LES17A*F1500	
FEZ17A*F		LES37A*F	
FGS17A*F		LGS17A*F	
FGU17A*F		LGS17A*F1180	
FGZ17A*F		LGS37A*F	
		LSL30FGW541NW23	

* Add Letter To Designate Color. L - Almond Q - Bisque W - White

Control Panel and Controls - Rear Control

Models LDE30RGS153TW01, LDE30RGS173TW01, LDG30RGS113TW01, LES17A*F, LES17A*F1500, LES37A*F, LGS17A*F, LGS17A*F1180 and LGS37A*F



DRY2278P_512030

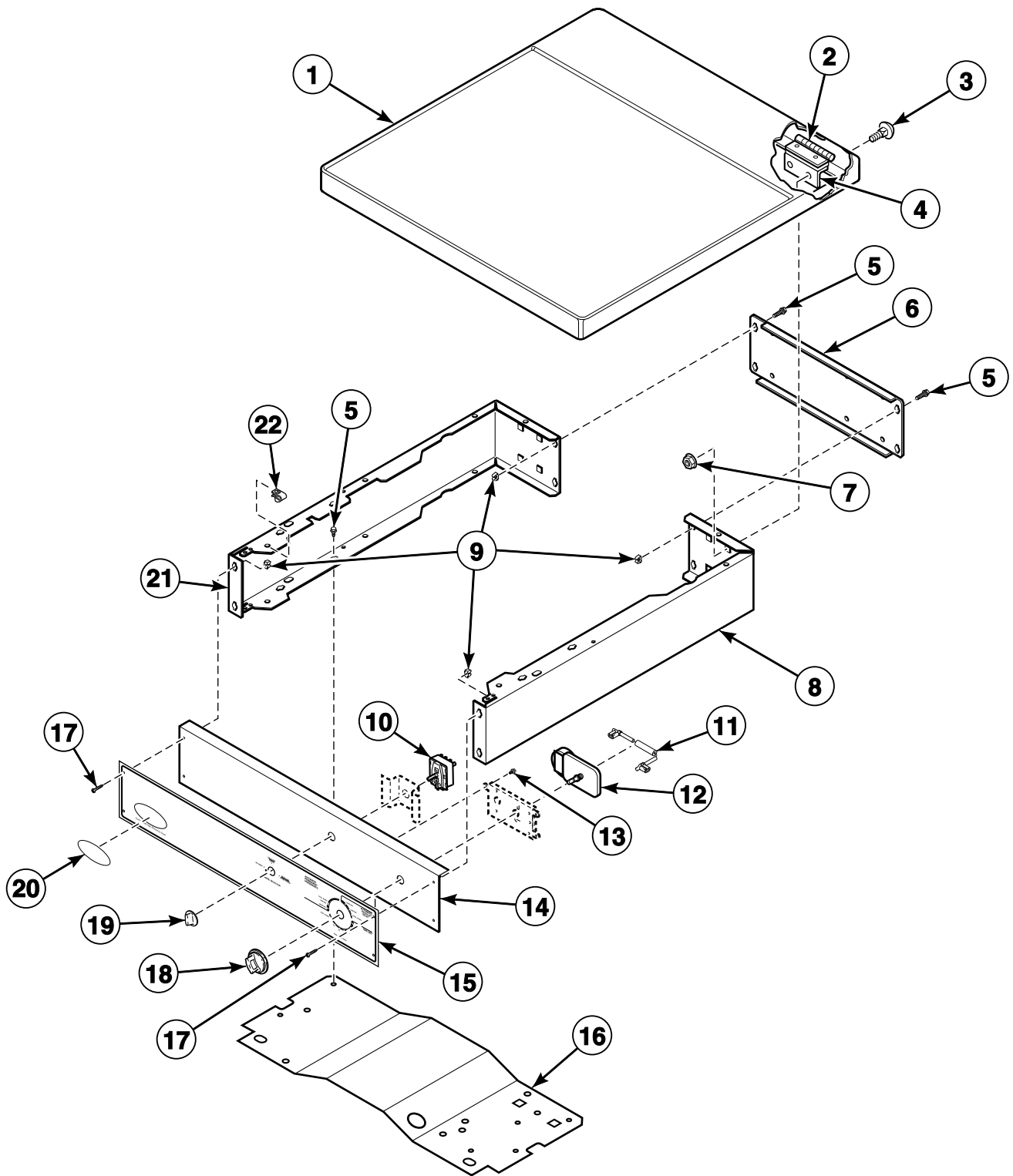
Control Panel and Controls - Rear Control

REF	PART NO.	DESCRIPTION	COMMENTS
1	501086	Screw	
2	505808W	Top Cover	White
	505808L	Top Cover	Almond
	505808Q	Top Cover	Bisque
3	513505	Fabric Selector Switch	
4	510540	Wire Assembly	Fabric selector switch to timer; Models LDE30RGS153TW01, LDE30RGS173TW01, LES17A*F, LES17A*F1500 and LES37A*F
5	510211	Buzzer	Models LES37A*F and LGS37A*F
6	505797P	Timer and Harness Kit	Models LDE30RGS153TW01, LDE30RGS173TW01, LES17A*F, LES17A*F1500 and LES37A*F
	505794P	Timer	Models LDG30RGS113TW01, LGS17A*F, LGS17A*F1180 and LGS37A*F
7	511277	Resistor Assembly	Use with 505797 Timer; Electric models
8	504008WP	End Panel	White; Right
	504008L	End Panel	Almond; Right
	504008QP	End Panel	Bisque; Right
9	510099	Hood Back Panel	
10	510029WP	Top Panel Kit	White
	510029LP	Top Panel Kit	Almond
11	503901	Control Support Panel	
12	504020W	Graphic Panel	White; Models LES37A*F and LGS37A*F
	504197W	Graphic Panel	White; Models LDE30RGS153TW01, LDE30RGS173TW01, LDG30RGS113TW01, LES17A*F, LES17A*F1500, LGS17A*F and LGS17A*F1180
	504197Q	Graphic Panel	Bisque; Models LDE30RGS153TW01, LDE30RGS173TW01, LDG30RGS113TW01, LES17A*F, LES17A*F1500, LGS17A*F and LGS17A*F1180
13	512117W	Timer Knob Assembly	White
	512117Q	Timer Knob Assembly	Bisque
	510287L	Timer Knob Assembly	Almond
14	36701W	Knob Assembly	White
	36701L	Knob Assembly	Almond
	36701Q	Knob Assembly	Bisque
15	504009WP	End Panel	White; Left
	504009L	End Panel	Almond; Left
	504009QP	End Panel	Bisque; Left

* Add Letter To Designate Color. L - Almond Q - Bisque W - White

Control Panel and Controls - Front Control

Models BDE30FGS171TW01, BDG30FGS111TW01, FES17A*F, FES17A*F1500, FEU17A*F, FEZ17A*F, FGS17A*F, FGU17A*F, FGZ17A*F and UDE30FGS171TW08



DRY2142P_512030

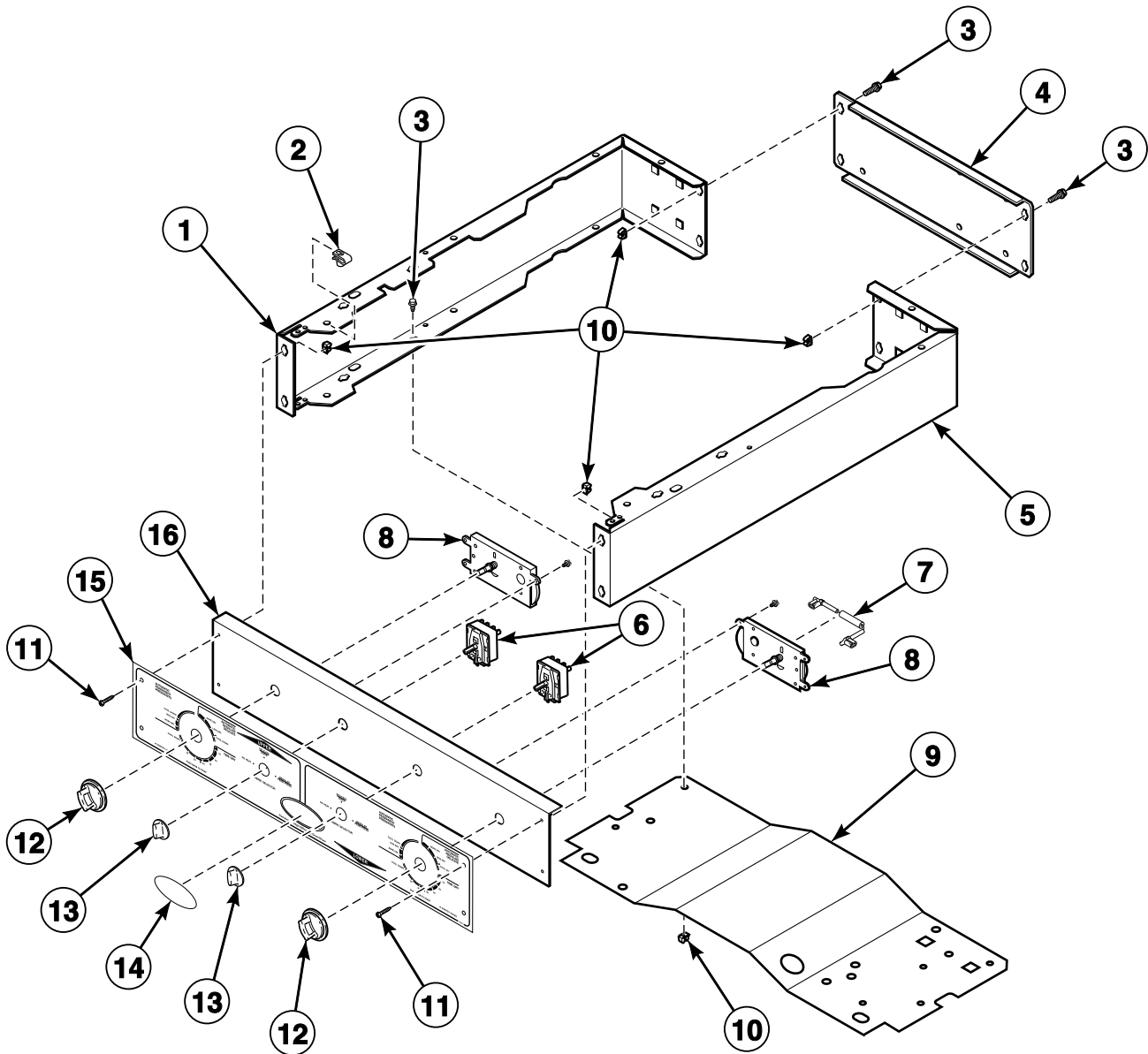
Control Panel and Controls - Front Control

REF	PART NO.	DESCRIPTION	COMMENTS
	505281	Disconnect Power Warning Label	
1	802247WP	Top and Gusset Assembly	White
	510032LP	Top Kit	Almond
	802247QP	Top and Gusset Assembly	Bisque
2	504228	Top Mounting Bracket	
3	29651	Bolt	4 required
4	511036	Hinge	
5	503688	Screw	8 required
6	800867	Control Cabinet Rear	
7	44087201	Nut	4 required
8	800915W	Right Control Cabinet Side	White
	800915L	Right Control Cabinet Side	Almond
	800915Q	Right Control Cabinet Side	Bisque
9	685847	Pop Rivet	
10	513505	Fabric Selector Switch	
11	511277	Resistor Assembly	Use with 505797 Timer; Electric models
12	505797P	Timer and Harness Kit	Models BDE30FGS171TW01, FES17A*F, FES17A*F1500, FEU17A*F, FEZ17A*F and UDE30FGS171TW08
	505794P	Timer	Models BDG30FGS111TW01, FGS17A*F, FGU17A*F and FGZ17A*F
13	501086	Screw	
14	511421W	Control Panel Assembly	White
15	511406	Graphic Overlay	
16	801777	Control Cabinet Bottom	
17	800930	Screw	
18	512117W	Timer Knob Assembly	White
	512117Q	Timer Knob Assembly	Bisque
	510287L	Timer Knob Assembly	Almond
19	36701W	Knob Assembly	White
	36701L	Knob Assembly	Almond
	36701Q	Knob Assembly	Bisque
20	800921	Domed Label	Models FES17A*F and FGS17A*F
	800922	Domed Label	Models FEZ17A*F and FGZ17A*F
	800923	Domed Label	Models FEU17A*F, FGU17A*F and UDE30FGS171TW08
	202128	Domed Label	Models BDE30FGS171TW01 and BDG30FGS111TW01
21	800900WP	Left Control Cabinet Side	White
	800900LP	Left Control Cabinet Side	Almond
	800900QP	Left Control Cabinet Side	Bisque
22	70030501	Expansion Clip	4 required

* Add Letter To Designate Color. L - Almond Q - Bisque W - White

Control Panel and Controls - Stacked Models

Models KES17A*F, KES17A*F1500, KGS17A*F and LSL30FGW541NW23



DRY2143P_512030

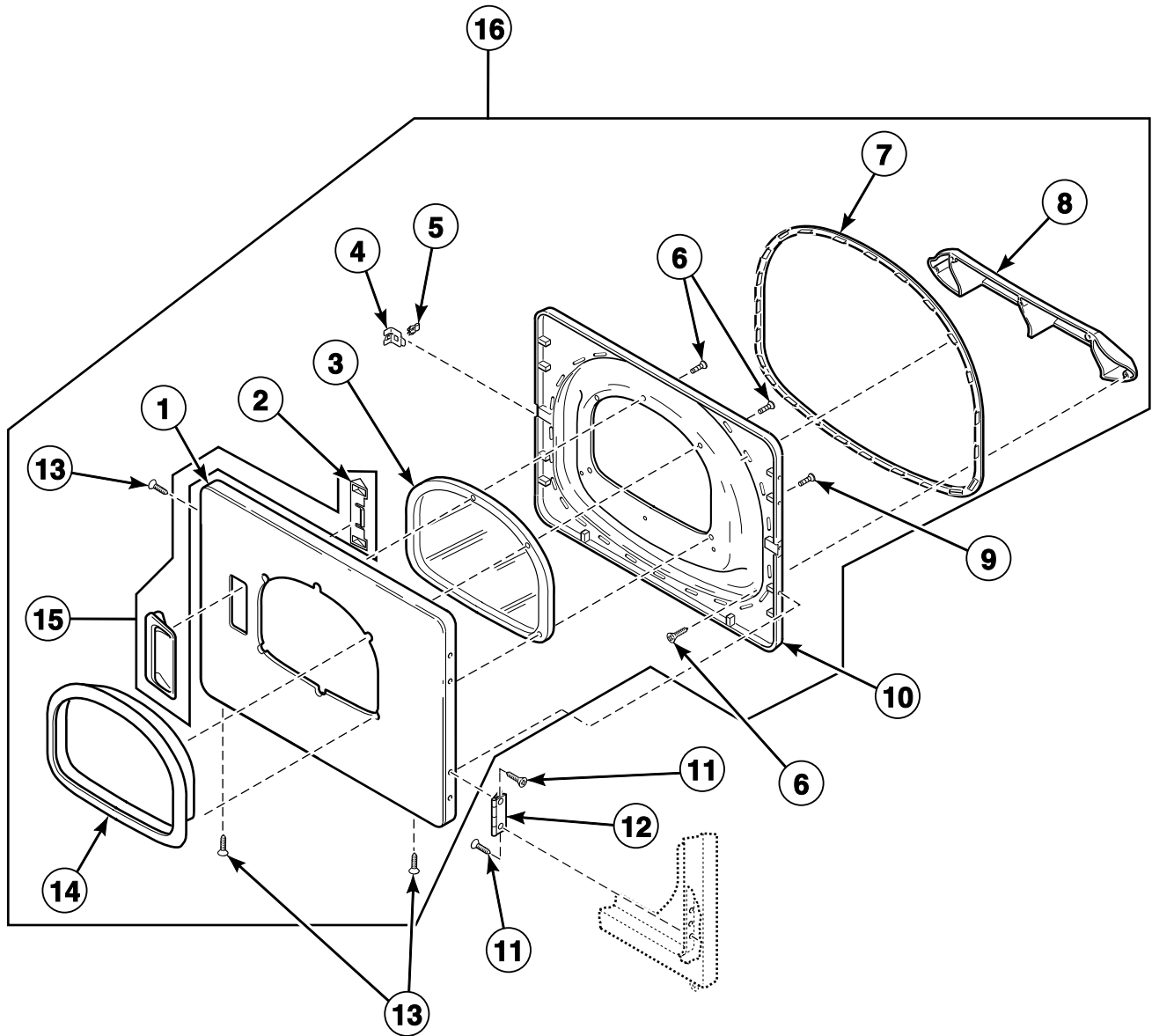
Control Panel and Controls - Stacked Models

REF	PART NO.	DESCRIPTION	COMMENTS
1	800900WP	Left Control Cabinet Side	White
	800900QP	Left Control Cabinet Side	Bisque
2	800931	Nut	
3	430497	Screw	
4	801058	Rear Control Cabinet	
5	800915W	Right Control Cabinet Side	White
	800915Q	Right Control Cabinet Side	Bisque
6	513505	Fabric Selector Switch	
7	511277	Resistor Assembly	Use with 505797 Timer; Models KES17A*F and KES17A*F1500
8	505797P	Timer and Harness Kit	Models KES17A*F and KES17A*F1500
	505794P	Timer	Model KGS17A*F
	505796P	Timer	Model LSL30FGW541NW23
9	801777	Control Cabinet Bottom	
10	70030501	Expansion Clip	
11	800930	Screw	
12	512119W	Timer Knob Assembly	White
13	36701W	Knob Assembly	White
	36701Q	Knob Assembly	Bisque
14	800921	Domed Label	
15	512031	Graphic Overlay	
16	512034W	Control Panel Assembly	White

* Add Letter To Designate Color. Q - Bisque W - White

Loading Door - With Window

Model LSL30FGW541NW23



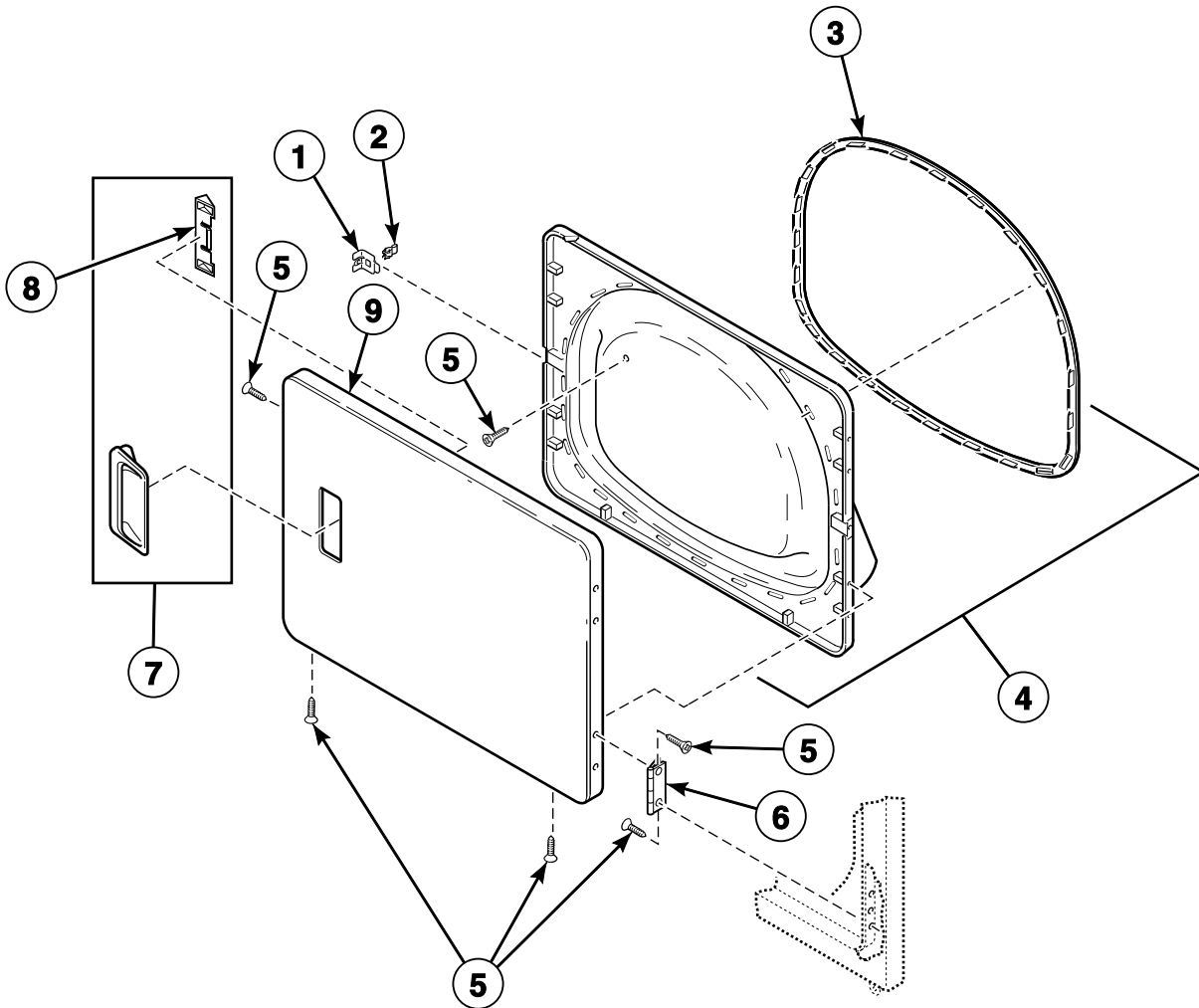
D427P_512030

Loading Door - With Window

REF	PART NO.	DESCRIPTION	COMMENTS
1	510082WP	Dryer Door	
2	510129	Door Handle Wedge	
3	503982P	Dryer Door Window	
4	510127	Door Strike Mount	
5	510181	Door Strike	
6	505970	Screw	
7	510147P	Liner Door Seal	
8	503870W	Door Liner Grill	
9	505870	Screw	
10	510098W	Liner and Seal Assembly	Includes item 7
11	505295	Screw	
12	511036	Hinge	
13	500226	Screw	
14	503981W	Window Trim	
15	510103WP	Door Pull and Wedge Kit	Includes item 2
16	511636WP	Door and Liner Assembly	White; Includes items 1-10, 14 and 15

Loading Door - Without Window

All Models Except LSL30FGW541NW23



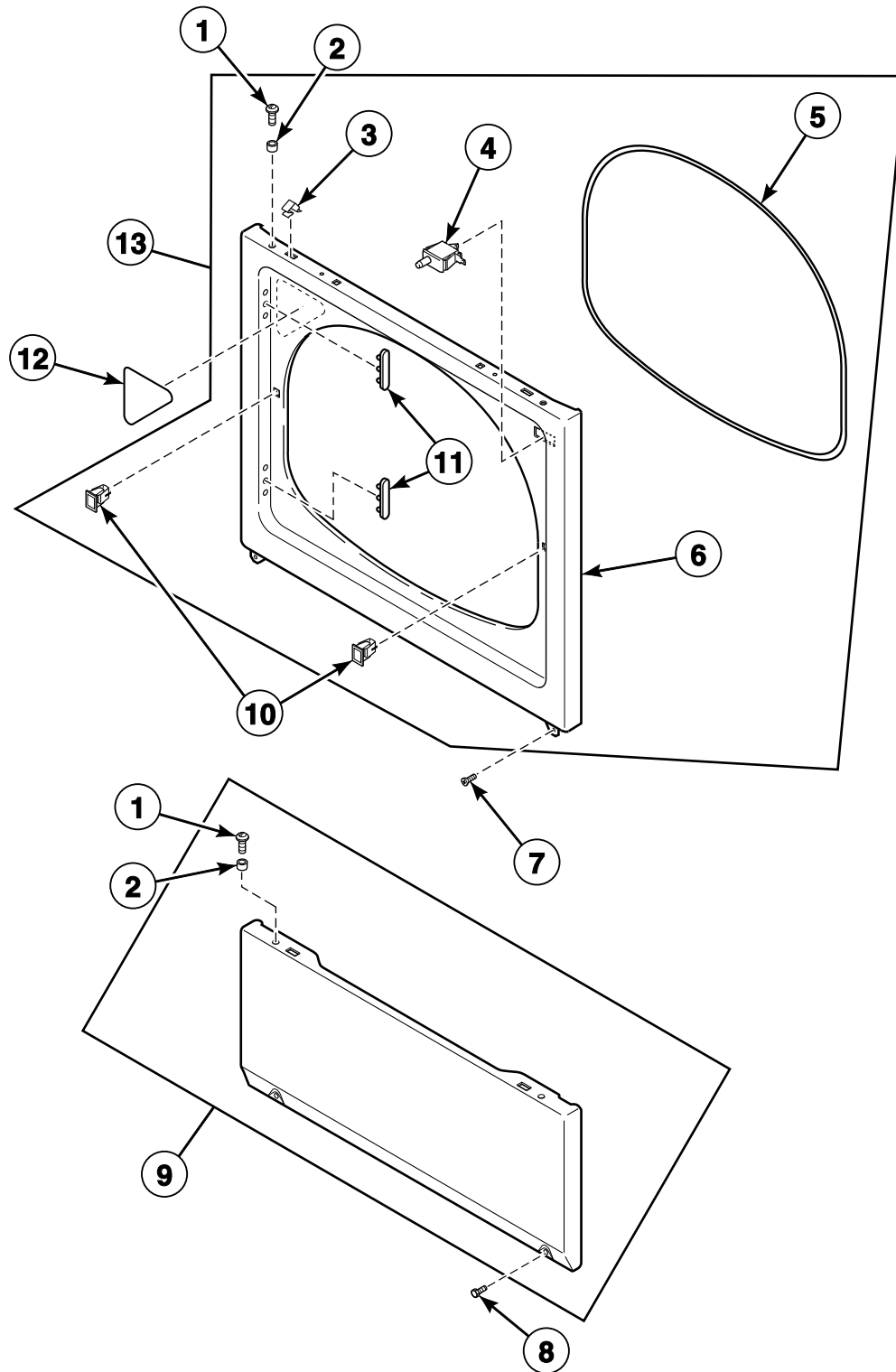
DRY1784P_512030

Loading Door - Without Window

REF	PART NO.	DESCRIPTION	COMMENTS
1	510127	Door Strike Mount	
2	510181	Door Strike	
3	510147P	Liner Door Seal	
4	510163WP	Liner, Seal and Grill Assembly	Includes item 3; Models BDE30FGS171TW01, FES17A*F, FES17A*F1500, KES17A*F, KES17A*F1500, LDE30RGS153TW01, LDE30RGS173TW01, LES17A*F, LES17A*F1500, LES37A*F and UDE30FGS171TW08 through Serial No. 1303025314; All other models
	513109P	Liner, Seal and Grill Assembly	Includes item 3; Models BDE30FGS171TW01, FES17A*F, FES17A*F1500, KES17A*F, KES17A*F1500, LDE30RGS153TW01, LDE30RGS173TW01, LES17A*F, LES17A*F1500, LES37A*F and UDE30FGS171TW08 starting Serial No. 1303025315
5	505295	Screw	
6	511036	Hinge	
7	510103WP	Door Pull and Wedge Kit	White; Includes item 8
	510103LP	Door Pull and Wedge Kit	Almond; Includes item 8
	510103QP	Door Pull and Wedge Kit	Bisque; Includes item 8
8	510129	Door Handle Wedge	
9	510013WP	Dryer Door	White
	510013LP	Dryer Door	Almond
	510013QP	Dryer Door	Bisque

* Add Letter To Designate Color. L - Almond Q - Bisque W - White

Access Panel, Front Panel and Seal



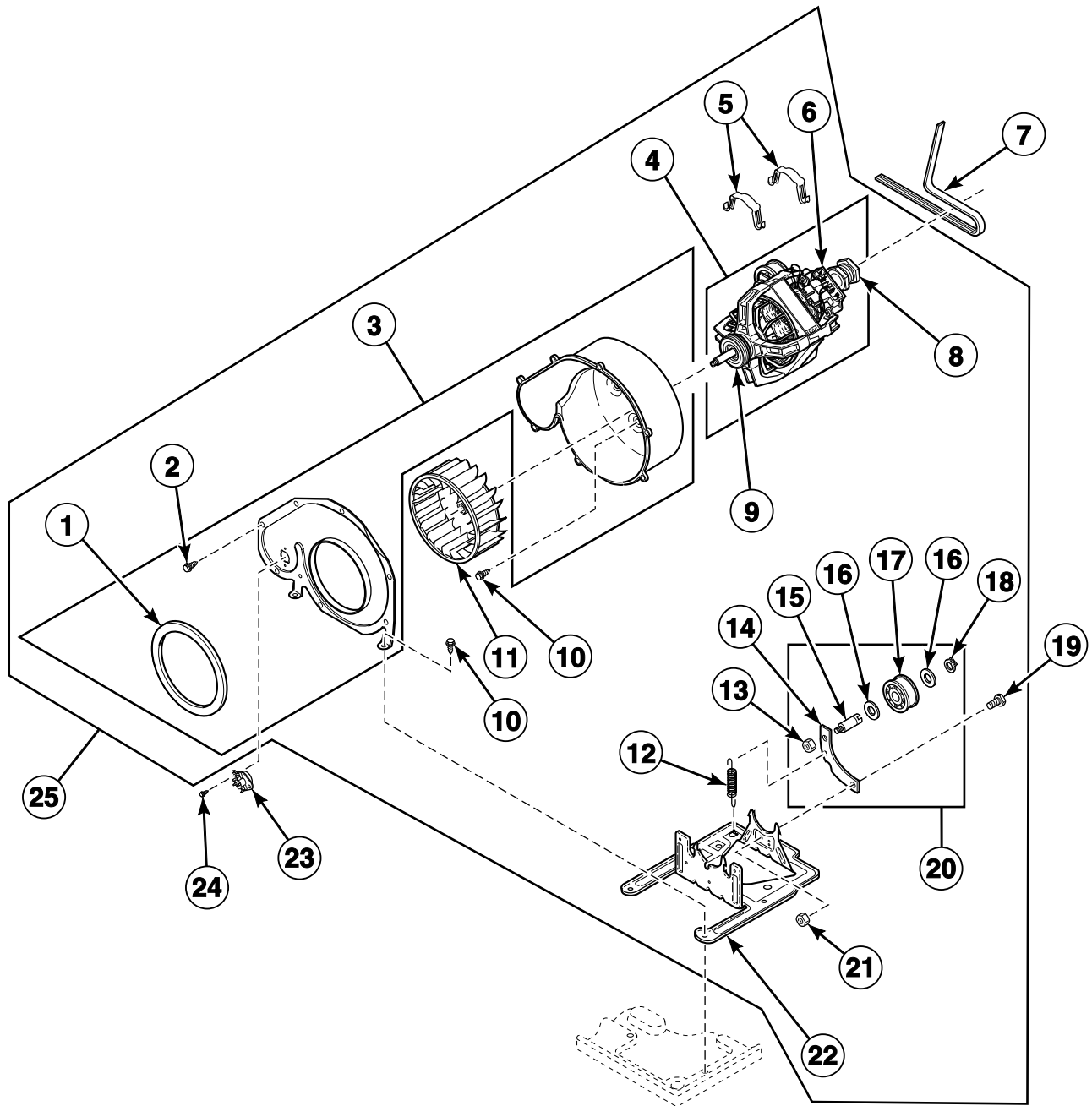
DRY1785P_512030

Access Panel, Front Panel and Seal

REF	PART NO.	DESCRIPTION	COMMENTS
1	39733	Screw	
2	56079	Panel Locator	
3	28835	Speed Clip	
4	512973	Switch	
5	511056	Front Panel Seal	
6	510066WP	Front Panel	White
	510066LP	Front Panel	Almond
	510066QP	Front Panel	Bisque
7	503688	Screw	
8	33562	Screw	
9	514250WP	Access Panel Assembly	White; Models BDE30FGS171TW01, FES17A*F, FES17A*F1500, KES17A*F, KES17A*F1500, LDE30RGS153TW01, LDE30RGS173TW01, LES17A*F, LES17A*F1500, LES37A*F and UDE30FGS171TW08 through Serial No. 1303025314; All other models
	510069LP	Access Panel	Almond; Models BDE30FGS171TW01, FES17A*F, FES17A*F1500, KES17A*F, KES17A*F1500, LDE30RGS153TW01, LDE30RGS173TW01, LES17A*F, LES17A*F1500, LES37A*F and UDE30FGS171TW08 through Serial No. 1303025314; All other models
	514250Q	Access Panel Assembly	Bisque; Models BDE30FGS171TW01, FES17A*F, FES17A*F1500, KES17A*F, KES17A*F1500, LDE30RGS153TW01, LDE30RGS173TW01, LES17A*F, LES17A*F1500, LES37A*F and UDE30FGS171TW08 through Serial No. 1303025314; All other models
	514252W	Access Panel and Guard Assembly	White; Models BDE30FGS171TW01, FES17A*F, FES17A*F1500, KES17A*F, KES17A*F1500, LDE30RGS153TW01, LDE30RGS173TW01, LES17A*F, LES17A*F1500, LES37A*F and UDE30FGS171TW08 starting Serial No. 1303025315
	514252Q	Access Panel and Guard Assembly	Bisque; Models BDE30FGS171TW01, FES17A*F, FES17A*F1500, KES17A*F, KES17A*F1500, LDE30RGS153TW01, LDE30RGS173TW01, LES17A*F, LES17A*F1500, LES37A*F and UDE30FGS171TW08 starting Serial No. 1303025315
10	510177	Door Catch Assembly	
11	510186	Hinge Hole Plug	
12	500281	Warning/Caution Label	
13	513781W	Front Panel Assembly	Model LSL30FGW541NW23; Includes items 1-6, 10 and 11, 511636WP Door Assembly, (2) 511036 Door Hinge and (8) 500226 Screw

* Add Letter To Designate Color. L - Almond Q - Bisque W - White

Motor, Exhaust Fan and Belt

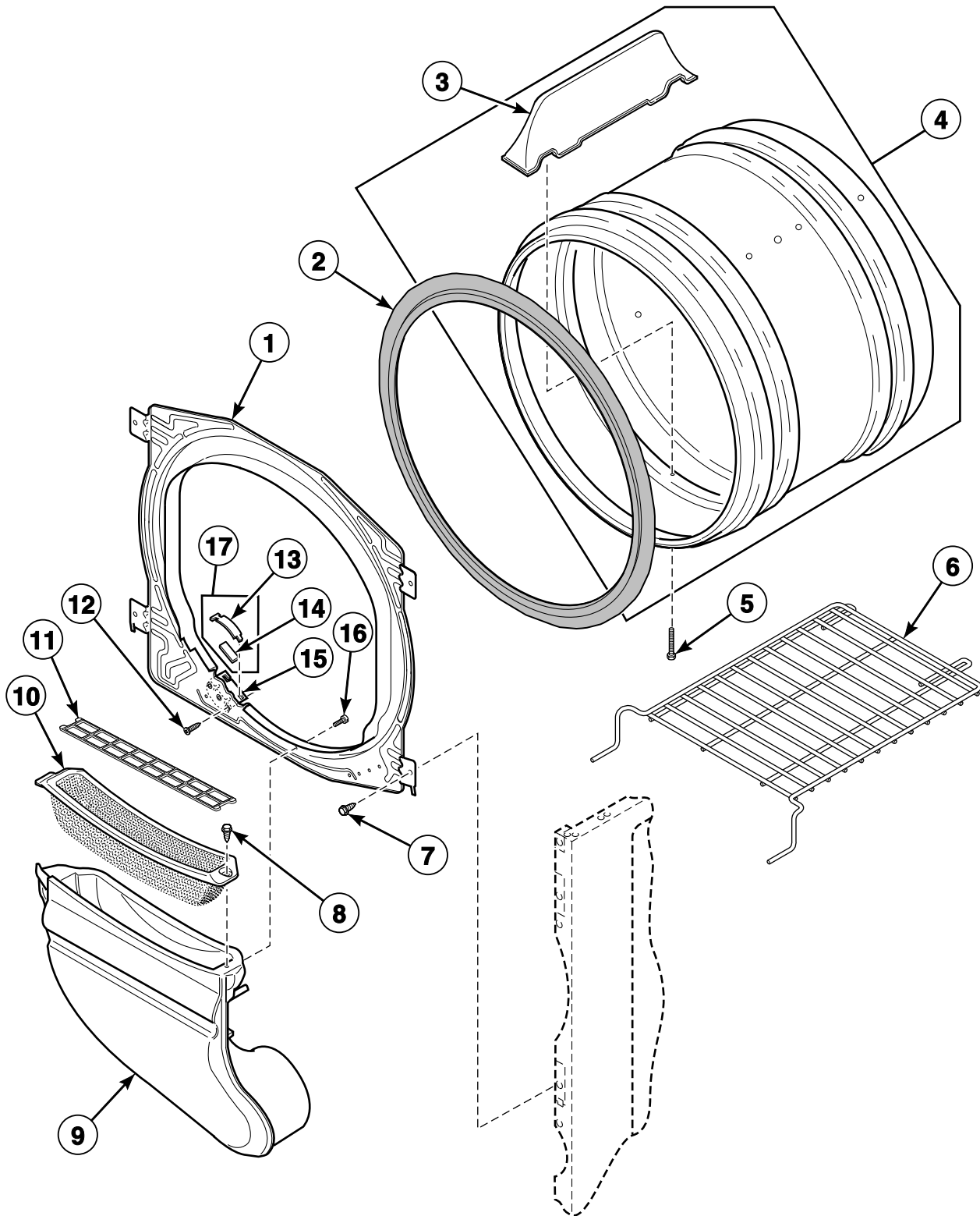


SWD1227P_512030

Motor, Exhaust Fan and Belt

REF	PART NO.	DESCRIPTION	COMMENTS
	27604P	Anti-Seize Compound	
1	510238P	Blower Housing Seal	
2	31260	Screw	
3	511969WP	Blower Housing	Includes items 1 and 2
4	505869P	Motor and Pulley Assembly	240 Volt/60 Hertz; Includes items 6, 8 and 9; Model LSL30FGW541NW23
	511629P	Motor and Pulley Assembly	120 Volt/60 Hertz; Includes items 6, 8 and 9; All other models
5	510180	Motor Mount Clamp	
6	501218P	Motor Switch Kit	Does not include thermal protector
7	511255P	Cylinder Belt	
8	500011	Motor Pulley	60 Hertz
9	590P3	Motor Hub Ring Kit	
10	503688	Screw	
11	510139P	Blower Fan Assembly	
12	510185	Idler Spring	
13	56156	Nut	
14	510133	Idler Lever	
15	56461P	Shaft	
16	52549	Washer	
17	510142P	Idler Wheel and Bearing Assembly	
18	23748	Retaining Ring	
19	500824	Screw	
20	510158	Idler Lever and Wheel Assembly	Includes items 13-18
21	52566	Nut	
22	510060	Motor Mount	
23	511957	Thermostat	White; Model LSL30FGW541NW23
	510707P	Thermostat	Pink/white; All other gas models
	504515	Thermostat	Green; Electric models
24	502535	Screw	
25	510717P	Blower and Fan Kit	Includes items 1-6 and 8-22

Front Bulkhead, Air Duct, Felt Seal and Cylinder



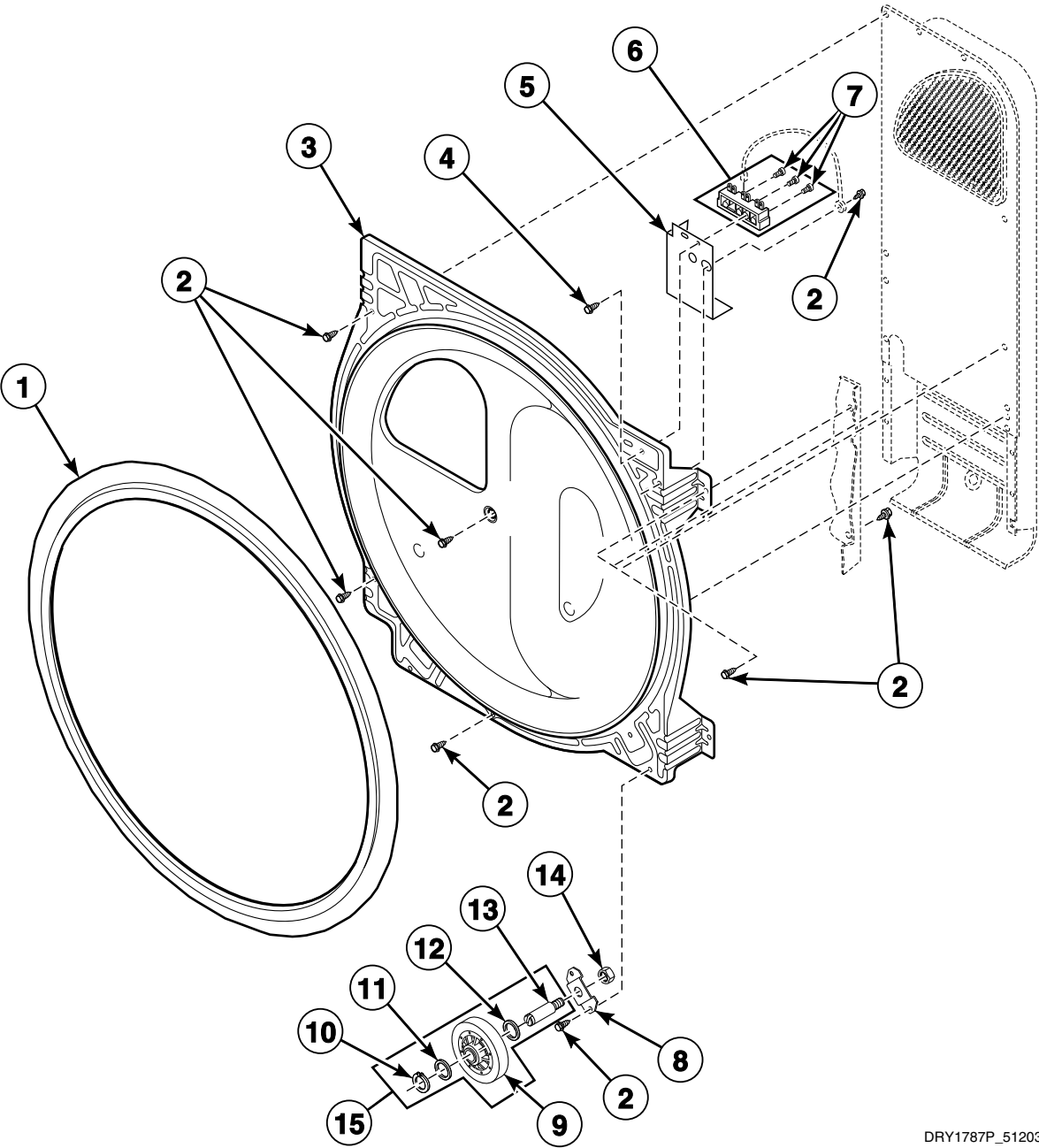
DRY2130P_512030

Front Bulkhead, Air Duct, Felt Seal and Cylinder

REF	PART NO.	DESCRIPTION	COMMENTS
1	511033WP	Front Bulkhead Assembly	Painted; Includes items 2 and 13-16; Models LES37A*F and LGS37A*F
	510266P	Front Bulkhead Assembly	Unpainted; Includes items 2 and 13-16; All other models
2	510207P	Cylinder Seal Assembly	
	511637P	Adhesive	For cylinder seal
	RB170001	Seal Kit	Includes 2 cylinder seals, 510238P Blower Housing Seal and 511637P Adhesive
3	510102W	Cylinder Baffle	3 required; Models BDE30FGS171TW01, FES17A*F, FES17A*F1500, KES17A*F, KES17A*F1500, LED30RGS153TW01, LDE30RGS173TW01, LES17A*F, LES17A*F1500, LES37A*F and UDE30FGS171TW08 through Serial No. 1303025314; All other models
	510102LG	Cylinder Baffle	3 required; Models BDE30FGS171TW01, FES17A*F, FES17A*F1500, KES17A*F, KES17A*F1500, LDE30RGS153TW01, LDE30RGS173TW01, LES17A*F, LES17A*F1500, LES37A*F and UDE30FGS171TW08 starting Serial No. 1303025315
4	510159WP	Cylinder Assembly	White; Includes item 3; Model LGS37A*F; Model LES37A*F through Serial No. 1303025314
	510265WP	Cylinder Assembly	Galvanized; Includes item 3; Models BDE30FGS171TW01, FES17A*F, FES17A*F1500, KES17A*F, KES17A*F1500, LDE30RGS153TW01, LDE30RGS173TW01, LES17A*F, LES17A*F1500 and UDE30FGS171TW08 through Serial No. 1303025314; All other models
	510265LGP	Cylinder Assembly	Includes item 3; Models BDE30FGS171TW01, FES17A*F, FES17A*F1500, KES17A*F, KES17A*F1500, LDE30RGS153TW01, LDE30RGS173TW01, LES17A*F, LES17A*F1500, LES37A*F and UDE30FGS171TW08 starting Serial No. 1303025315
5	62588	Screw	
6	512082P	Drying Rack	
7	503688	Screw	
8	501285	Screw	
9	510151W	Air Duct Assembly	Models BDE30FGS171TW01, FES17A*F, FES17A*F1500, KES17A*F, KES17A*F1500, LED30RGS153TW01, LDE30RGS173TW01, LES17A*F, LES17A*F1500, LES37A*F and UDE30FGS171TW08 through Serial No. 1303025314; All other models
	510151LG	Air Duct Assembly	Models BDE30FGS171TW01, FES17A*F, FES17A*F1500, KES17A*F, KES17A*F1500, LDE30RGS153TW01, LDE30RGS173TW01, LES17A*F, LES17A*F1500, LES37A*F and UDE30FGS171TW08 starting Serial No. 1303025315
10	503980W	Lint Filter	Models BDE30FGS171TW01, FES17A*F, FES17A*F1500, KES17A*F, KES17A*F1500, LDE30RGS153TW01, LDE30RGS173TW01, LES17A*F, LES17A*F1500, LES37A*F and UDE30FGS171TW08 through Serial No. 1303025314; All other models
	503980LG	Lint Filter	Models BDE30FGS171TW01, FES17A*F, FES17A*F1500, KES17A*F, KES17A*F1500, LDE30RGS153TW01, LDE30RGS173TW01, LES17A*F, LES17A*F1500, LES37A*F and UDE30FGS171TW08 starting Serial No. 1303025315
11	510502W	Lint Filter Cover	Models BDE30FGS171TW01, FES17A*F, FES17A*F1500, KES17A*F, KES17A*F1500, LDE30RGS153TW01, LDE30RGS173TW01, LES17A*F, LES17A*F1500, LES37A*F and UDE30FGS171TW08 through Serial No. 1303025314; All other models
	510502LG	Lint Filter Cover	Models BDE30FGS171TW01, FES17A*F, FES17A*F1500, KES17A*F, KES17A*F1500, LDE30RGS153TW01, LDE30RGS173TW01, LES17A*F, LES17A*F1500, LES37A*F and UDE30FGS171TW08 starting Serial No. 1303025315
12	52864	Screw	
13	513710	Cylinder Glide	2 required
14	510189	Felt Pad	2 required
15	510145	Cylinder Glide Bracket	2 required
16	505295	Screw	
17	RB170003	Glide Kit	Includes items 13 and 14

* Add Letter To Designate Color. L - Almond Q - Bisque W - White

Rear Bulkhead, Felt Seal, Cylinder Roller and Terminal Block



DRY1787P_512030

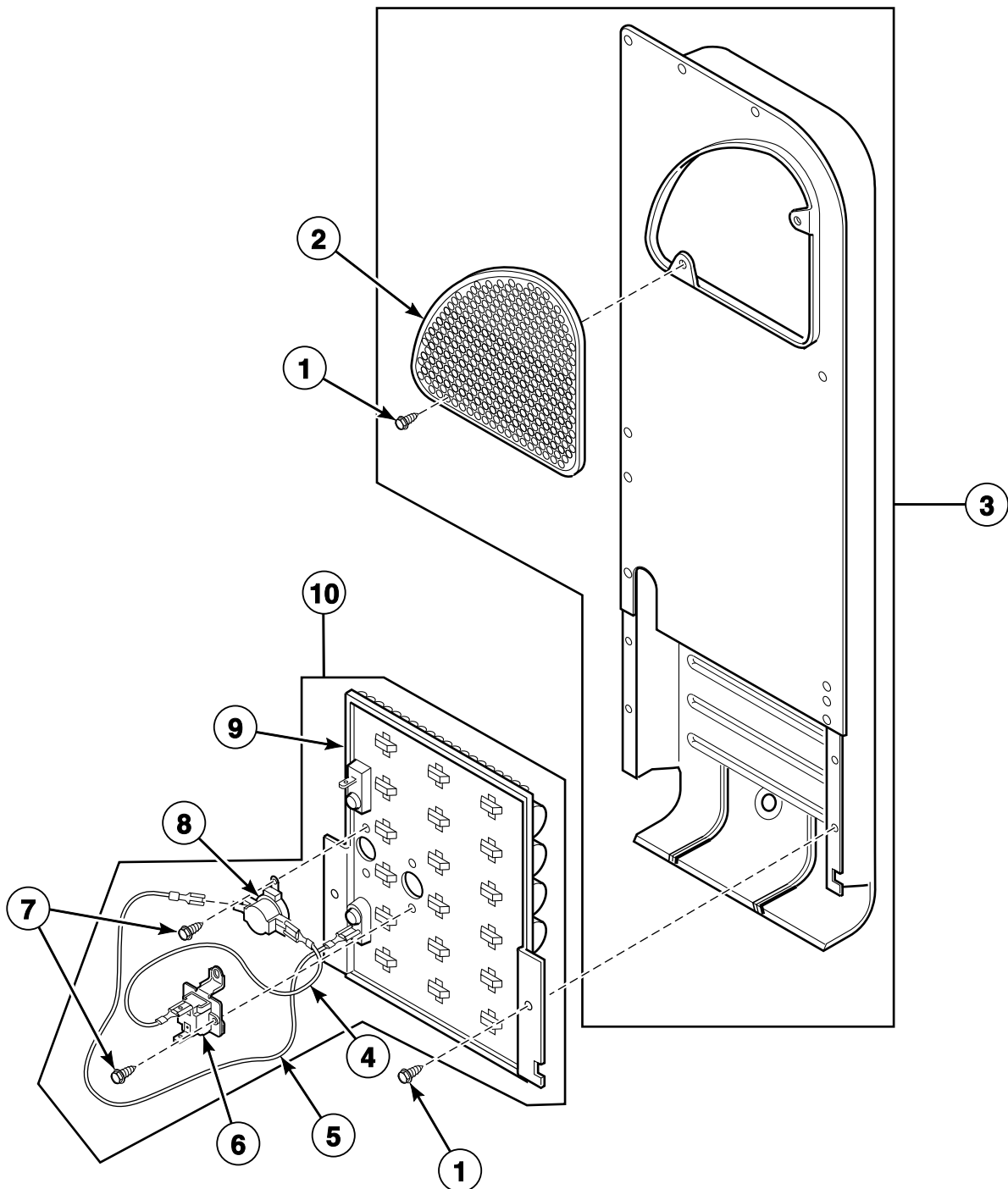
Rear Bulkhead, Felt Seal, Cylinder Roller and Terminal Block

REF	PART NO.	DESCRIPTION	COMMENTS
1	510207P	Cylinder Seal Assembly	
	511637P	Adhesive	For cylinder seal
	RB170001	Seal Kit	Includes 2 cylinder seals, 510238P Blower Housing Seal and 511637P Adhesive
2	503688	Screw	
3	510905WP	Rear Bulkhead Assembly	White; Includes item 1; Models LES37A*F and LGS37A*F
	511082P	Rear Bulkhead Assembly	Galvanized; Includes item 1; All other models
4	44023301	Screw	Model LSL30FGW541NW23; Electric models
5	510237	Terminal Block Shield	Electric models
6	510190P	Terminal Block Assembly	Includes 3 of item 7; Model LSL30FGW541NW23; Electric models
7	61199	Screw	
8	510100	Cylinder Roller Bracket	
9	510708P	Cylinder Roller	2 required; One per side
10	23748	Retaining Ring	
11	52549	Washer	
12	504082	Washer	
13	56461P	Shaft	
14	56156	Nut	
15	RB170002	Roller Kit	Includes items 9-13

* Add Letter To Designate Color. L - Almond Q - Bisque W - White

Heater Duct and Element Assembly

Electric Models



DRY1789P_512030

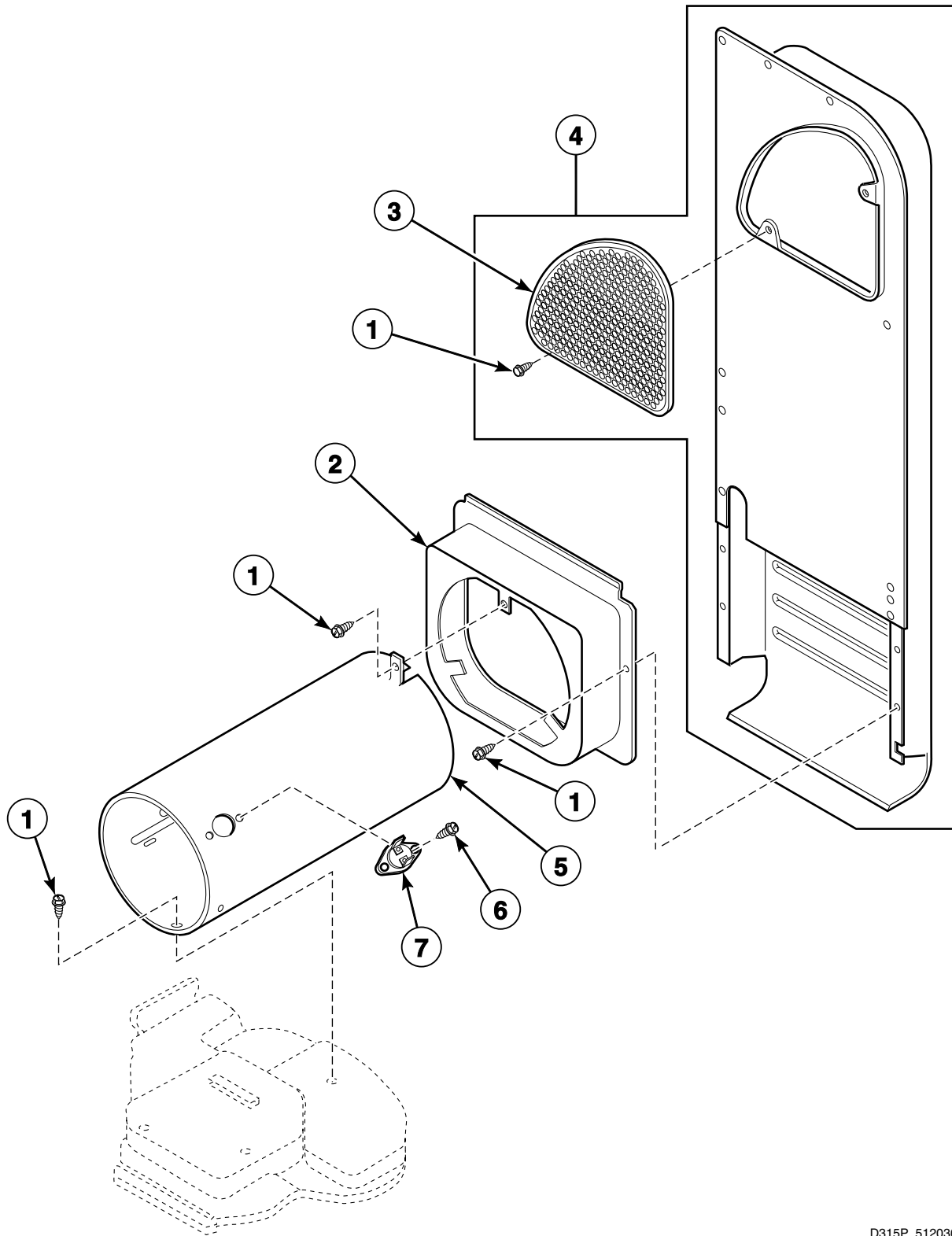
Heater Duct and Element Assembly

REF	PART NO.	DESCRIPTION	COMMENTS
1	503688	Screw	2 required
2	500820	Outlet Cover	
3	510025P	Heater Duct and Screw Assembly	Includes items 1 and 2
4	510528	Wire Assembly	Orange; Thermostat jumper; Attaches to heater assembly
5	510527	Wire Assembly	Black; Fuse jumper; Attaches to heater assembly
6	511412	Thermal Fuse Assembly	
7	23222	Screw	
8	510701	Limit Thermostat	
9	510325P	Heater	4.75 kW; 208 Volt/60 Hertz; Models FES17A*F1500, KES17A*F1500 and LES17A*F1500
	510329P	Heater Assembly	5.35 kW; 240 Volt/60 Hertz; All other models
10	61928	Heater Kit Assembly	4.75 kW; 208 Volt/60 Hertz; Includes items 4-9
	964P3	Heater Kit	5.35 kW; 240 Volt/60 Hertz; Includes items 4-9

* Add Letter To Designate Color. L - Almond Q - Bisque W - White

Heater Duct Assembly

Gas Models



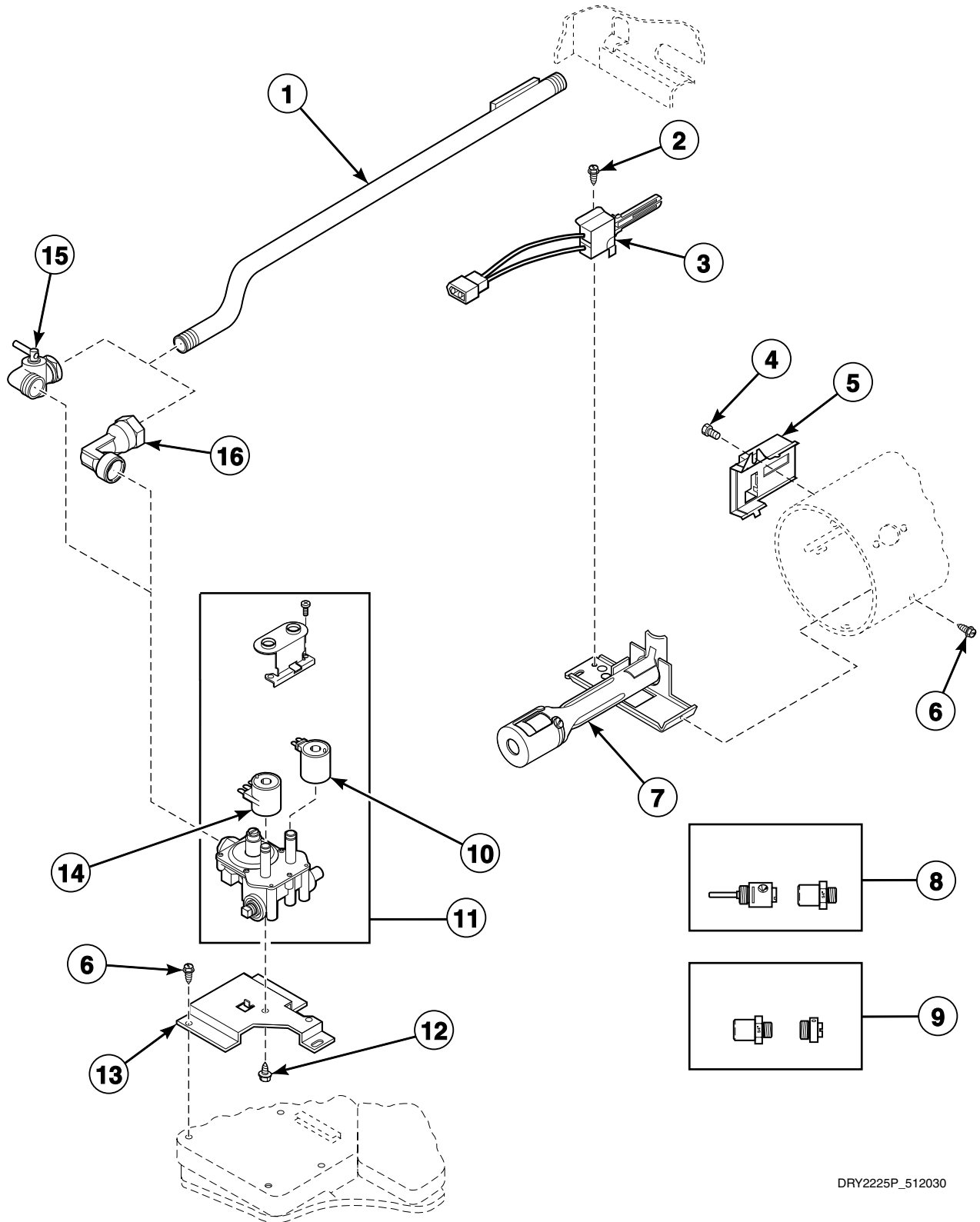
D315P_512030

Heater Duct Assembly

REF	PART NO.	DESCRIPTION	COMMENTS
1	503688	Screw	2 required
2	510101	Heat Duct Shroud	
3	500820	Outlet Cover	
4	510025P	Heater Duct and Screw Assembly	Includes items 1 and 3
5	510131	Combustion Duct	
6	51782	Screw	
7	510702	Limit Thermostat	Black; Auto reset

Gas Valve, Igniter and Gas Conversion Kits

Gas Models



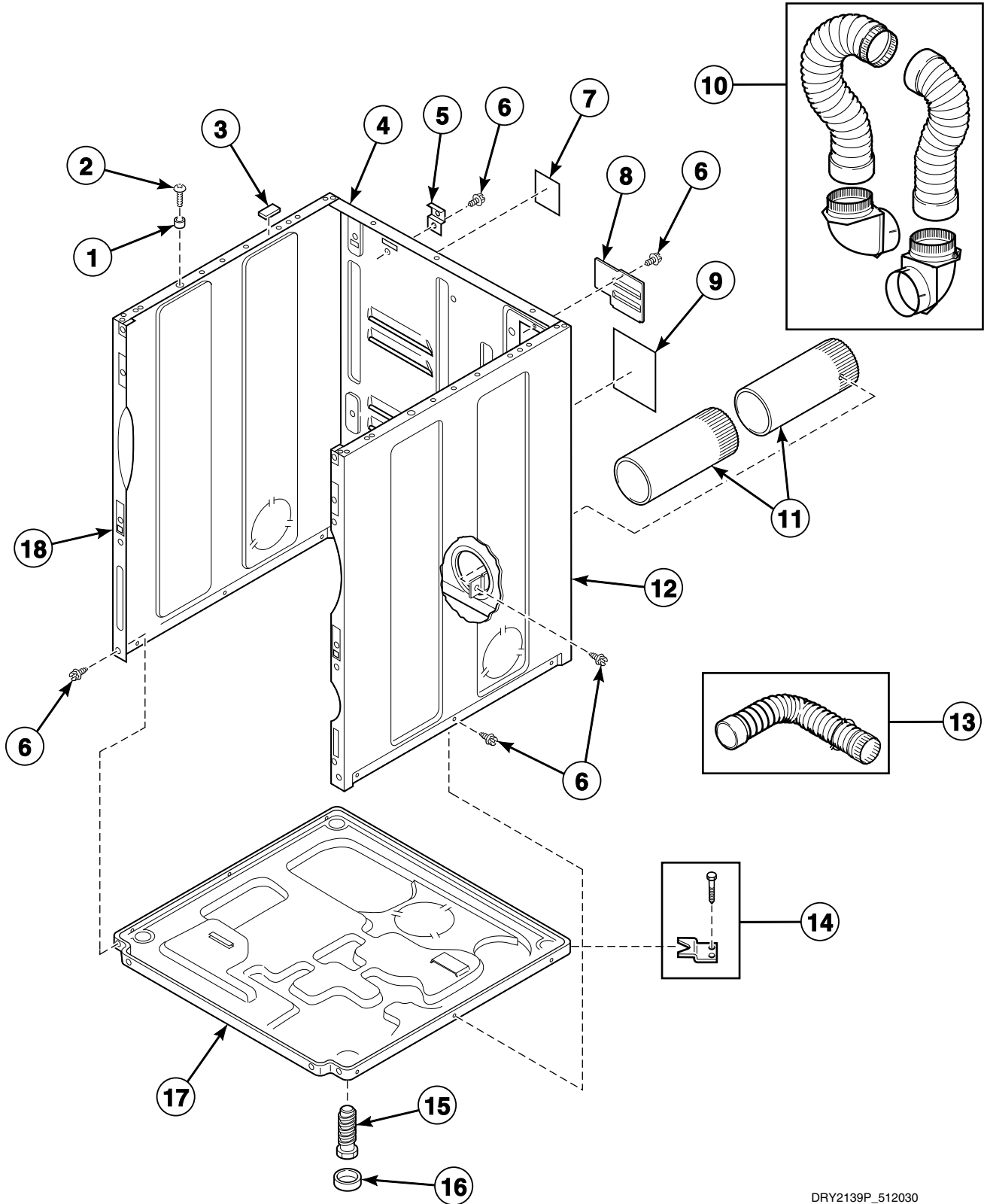
DRY2225P_512030

Gas Valve, Igniter and Gas Conversion Kits

REF	PART NO.	DESCRIPTION	COMMENTS
1	510204	Lead-In Pipe Assembly	
2	51782	Screw	
3	510184P	Igniter and Bracket Assembly	
4	23222	Screw	
5	510213	Sensor	
6	503688	Screw	
7	510149P	Burner Assembly	
8	649P3	L.P. Conversion Kit	Used to convert dryers from Natural Gas (N.G.) or Mixed Gas to Liquid Petroleum Gas (L.P.); 22,500 Btu; Included on model LSL30FGW541NW23
9	650P3	N.G. Conversion Kit	Used to convert dryers from L.P. to N.G. or Mixed Gas; 22,500 Btu
10	58804B	Secondary Coil	
11	60353P	Gas Valve Assembly	Model LSL30FGW541NW23; Includes items 10 and 14
	510506P	Gas Valve Assembly	All other models; Includes items 10 and 14
12	56124	Screw	
13	510128	Gas Valve Mounting Bracket	
14	58804A	Booster and Holding Coil	
15	510205	Elbow Shut-Off Valve	All models except LSL30FGW541NW23
16	513072	Elbow	Model LSL30FGW541NW23

Cabinet, Exhaust Duct and Base - Single Dryers

Models BDE30FGS171TW01, BDG30FGS111TW01, FES17A*F, FES17A*F1500, FEU17A*F, FEZ17A*F, FGS17A*F, FGU17A*F, FGZ17A*F, LDE30RGS153TW01, LDE30RGS173TW01, LDG30RGS113TW01, LES17A*F, LES17A*F1500, LES37A*F, LGS17A*F, LGS17A*F1180, LGS37A*F and UDE30FGS171TW08



DRY2139P_512030

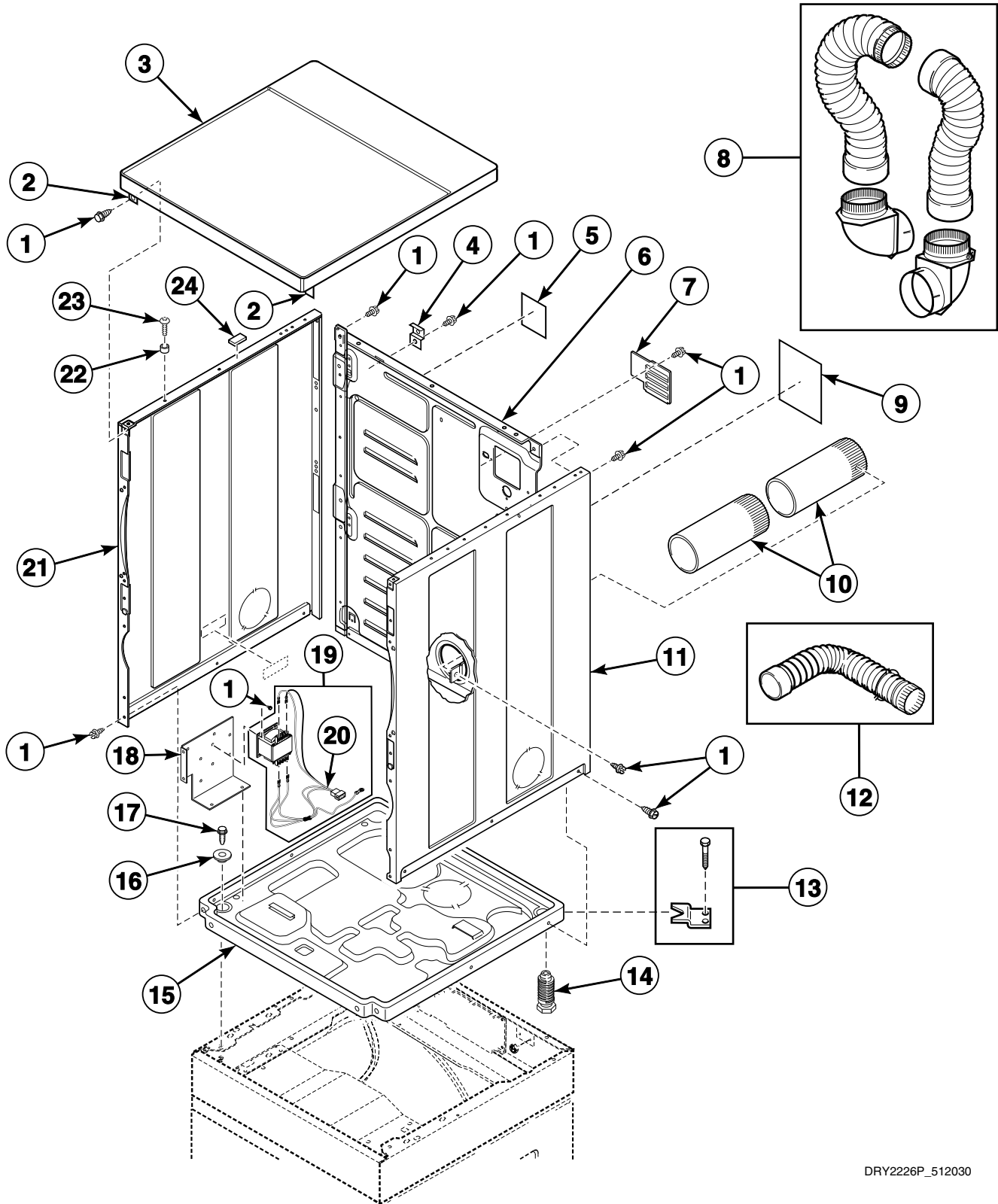
Cabinet, Exhaust Duct and Base - Single Dryers

REF	PART NO.	DESCRIPTION	COMMENTS
	122P4P	Porcelain Touch-Up Paint	White
	215P4P	Porcelain Touch-Up Paint	Almond
	370P4P	Porcelain Touch-Up Paint	Bisque
1	56079	Panel Locator	
2	39733	Screw	
3	56128	Bumper Pad	
4	510005P	Cabinet Rear Panel	
5	510136	Top Hinge	
6	503688	Screw	
7	511004	Gas Clearance Label	Gas models
8	510903	Access Panel Plate	
9	511005	Electric Clearance Label	Electric models
10	521P3	Flexible Venting Kit	
11	510137	Exhaust Duct	Each dryer requires 2 pieces
12	510002WP	Cabinet Side Panel	White; Right
	510002LP	Cabinet Side Panel	Almond; Right
	510002QP	Cabinet Side Panel	Bisque; Right
13	528P3	Directional Exhaust Kit	Used to vent dryer out the sides or bottom
14	526P3	Hold Down Kit	For mobile home installations
15	510135	Leveling Leg	
16	501855	Rubber Foot	
17	513901	Dryer Base	
18	510001WP	Cabinet Side Panel	White; Left
	510001LP	Cabinet Side Panel	Almond; Left
	510001QP	Cabinet Side Panel	Bisque; Left

* Add Letter To Designate Color. L - Almond Q - Bisque W - White

Cabinet, Exhaust Duct and Base - Stacked Dryers

Models KES17A*F, KES17A*F1500, KGS17A*F and LSL30FGW541NW23



DRY2226P_512030

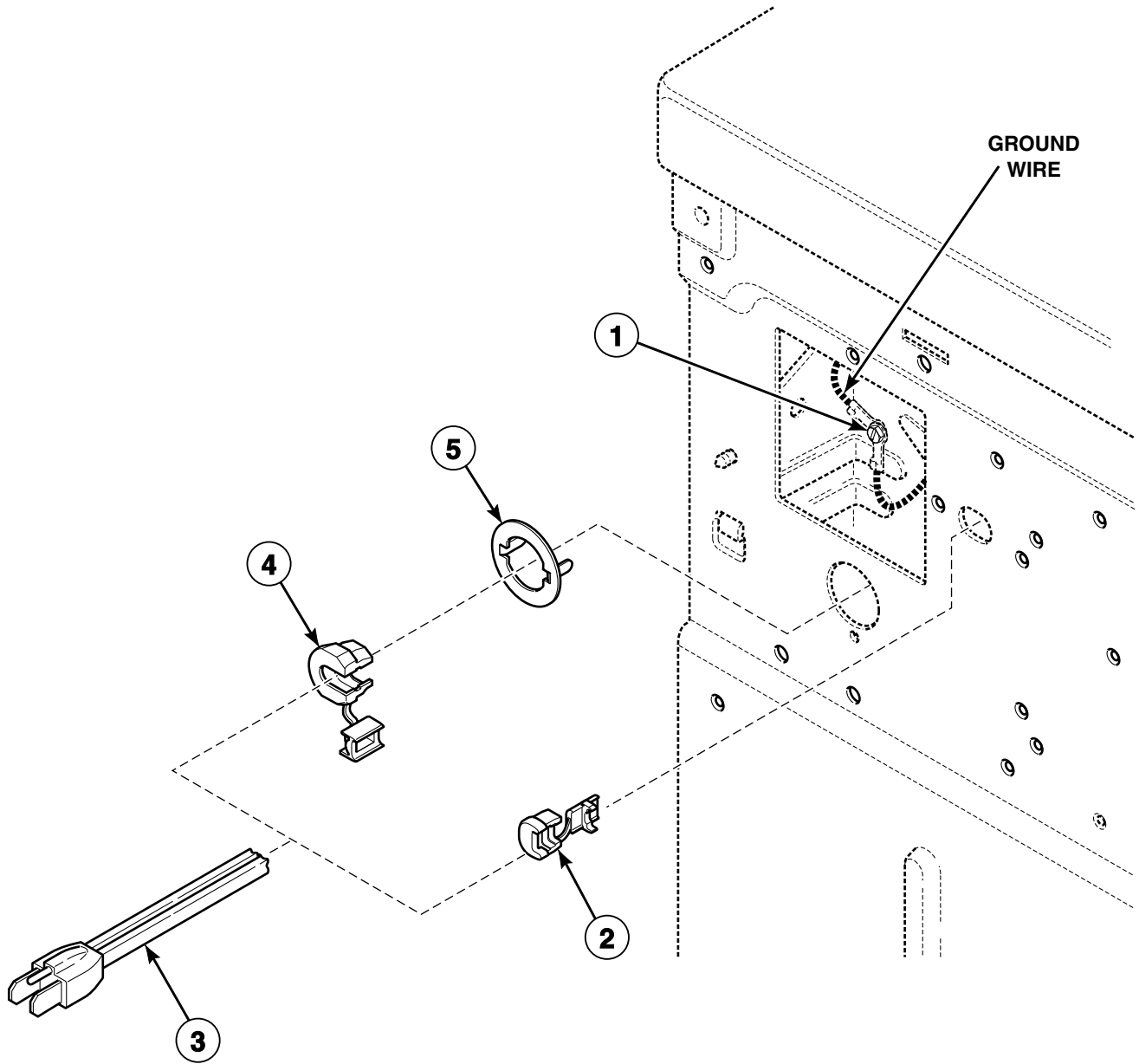
Cabinet, Exhaust Duct and Base - Stacked Dryers

REF	PART NO.	DESCRIPTION	COMMENTS
	122P4P	Porcelain Touch-Up Paint	White
	370P4P	Porcelain Touch-Up Paint	Bisque
1	503688	Screw	
2	510146	Bracket	
3	510032WP	Top Kit	White
	510032QP	Top Kit	Bisque
4	510136	Top Hinge	
5	511004	Gas Clearance Label	Models KGS17A*F and LSL30FGW541NW23
6	510005P	Cabinet Rear Panel	
7	510903	Access Panel Plate	
8	521P3	Flexible Venting Kit	
9	511005	Electric Clearance Label	Models KES17A*F and KES17A*F1500
10	510137	Exhaust Duct	Each dryer requires 2 pieces
11	510002WP	Cabinet Side Panel	White; Right
	510002QP	Cabinet Side Panel	Bisque; Right
12	528P3	Directional Exhaust Kit	Used to vent dryer out the sides
13	526P3	Hold Down Kit	For mobile home installations
14	510135	Leveling Leg	
15	513901	Dryer Base	
16	26509	Washer	
17	502431	Screw	
18	511859	Contactor Bracket	Model LSL30FGW541NW23
19	511658P	Transformer Kit	Model LSL30FGW541NW23; Includes item 20
20	511303	Wire Harness Assembly	Model LSL30FGW541NW23
21	510001WP	Cabinet Side Panel	White; Left
	510001QP	Cabinet Side Panel	Bisque; Left
22	56079	Panel Locator	
23	39733	Screw	
24	56128	Bumper Pad	

* Add Letter To Designate Color. Q - Bisque W - White

Lead-In Cord

Gas Models



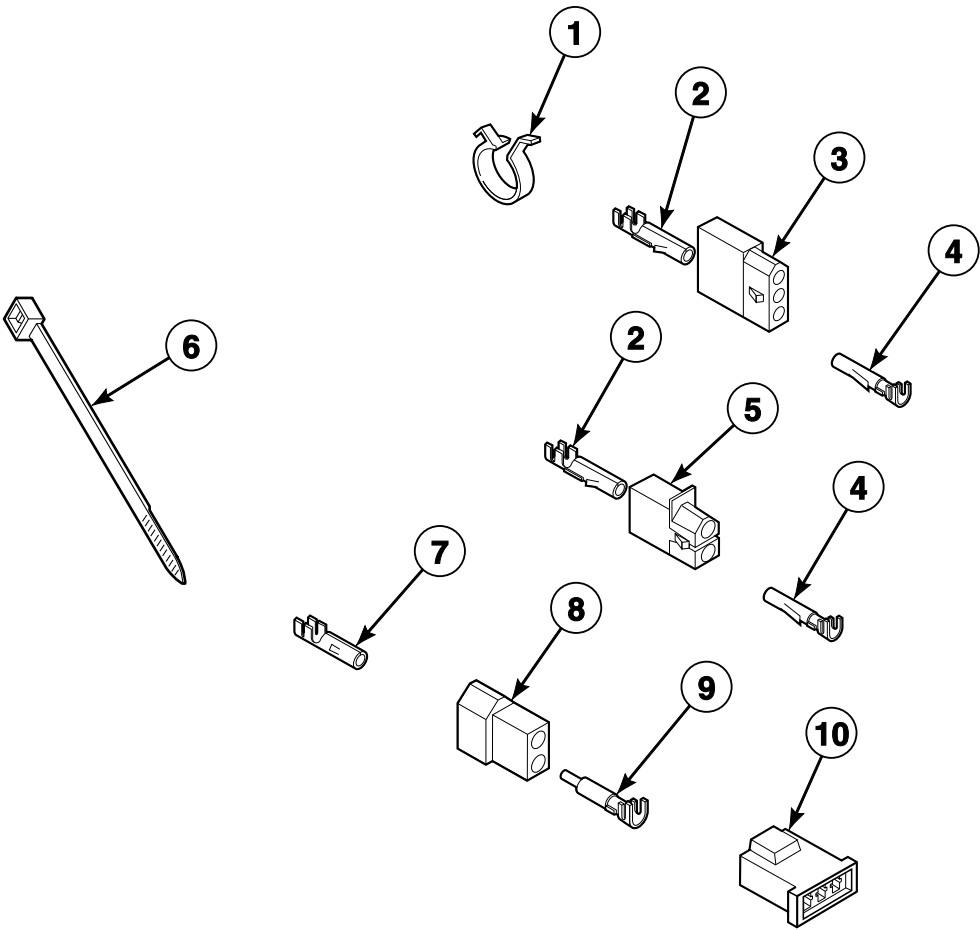
SWD1222P_512030

Lead-In Cord

REF	PART NO.	DESCRIPTION	COMMENTS
1	20530	Screw	
2	38384	Strain Relief	All models except LSL30FGW541NW23
3	59308	Lead-In Cord	Model KGS17A*F
	59373	Lead-In Cord	Model LSL30FGW541NW23
	56222	Lead-In Cord	All other models
4	52113	Strain Relief	Model LSL30FGW541NW23
5	502496	Strain Relief Adapter	Model LSL30FGW541NW23

* Add Letter To Designate Color. L - Almond Q - Bisque W - White

Terminal Block and Terminals

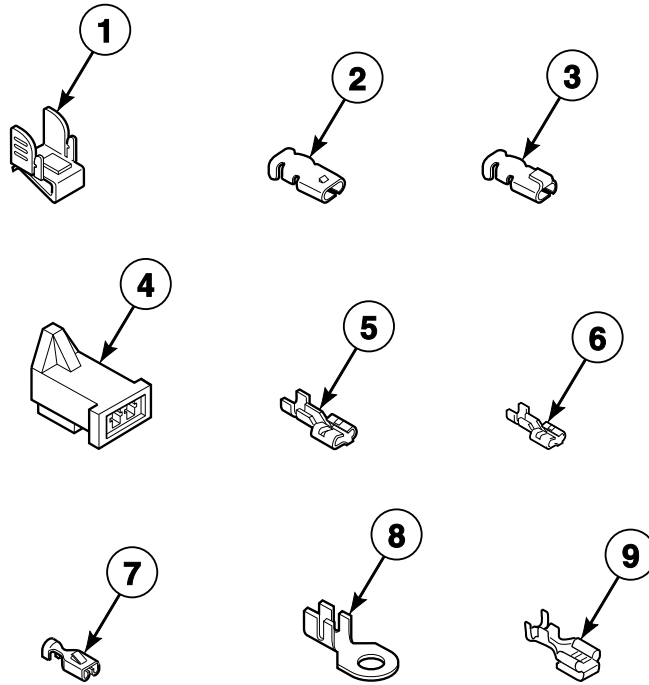


DRY1764P_512030

Terminal Block and Terminals

REF	PART NO.	DESCRIPTION	COMMENTS
1	504034	Wire Clip	11/16 inch
	687500	Wire Clip	1 inch
2	00117	Female Pin Terminal	
	00129	Male Pin Terminal	1/8 inch
3	23039	3 Circuit Receptacle	
4	00116	Male Pin Terminal	
	00128	Female Pin Terminal	1/8 inch
5	56451	2 Circuit Receptacle	
	56855	12 Circuit Receptacle	
6	55881	Harness Strap	
7	00130	Female Pin Terminal	1/8 inch
8	56266	2 Circuit Plug	
9	00127	Male Pin Terminal	1/8 inch
10	58800	3 Circuit Connector	

Terminals



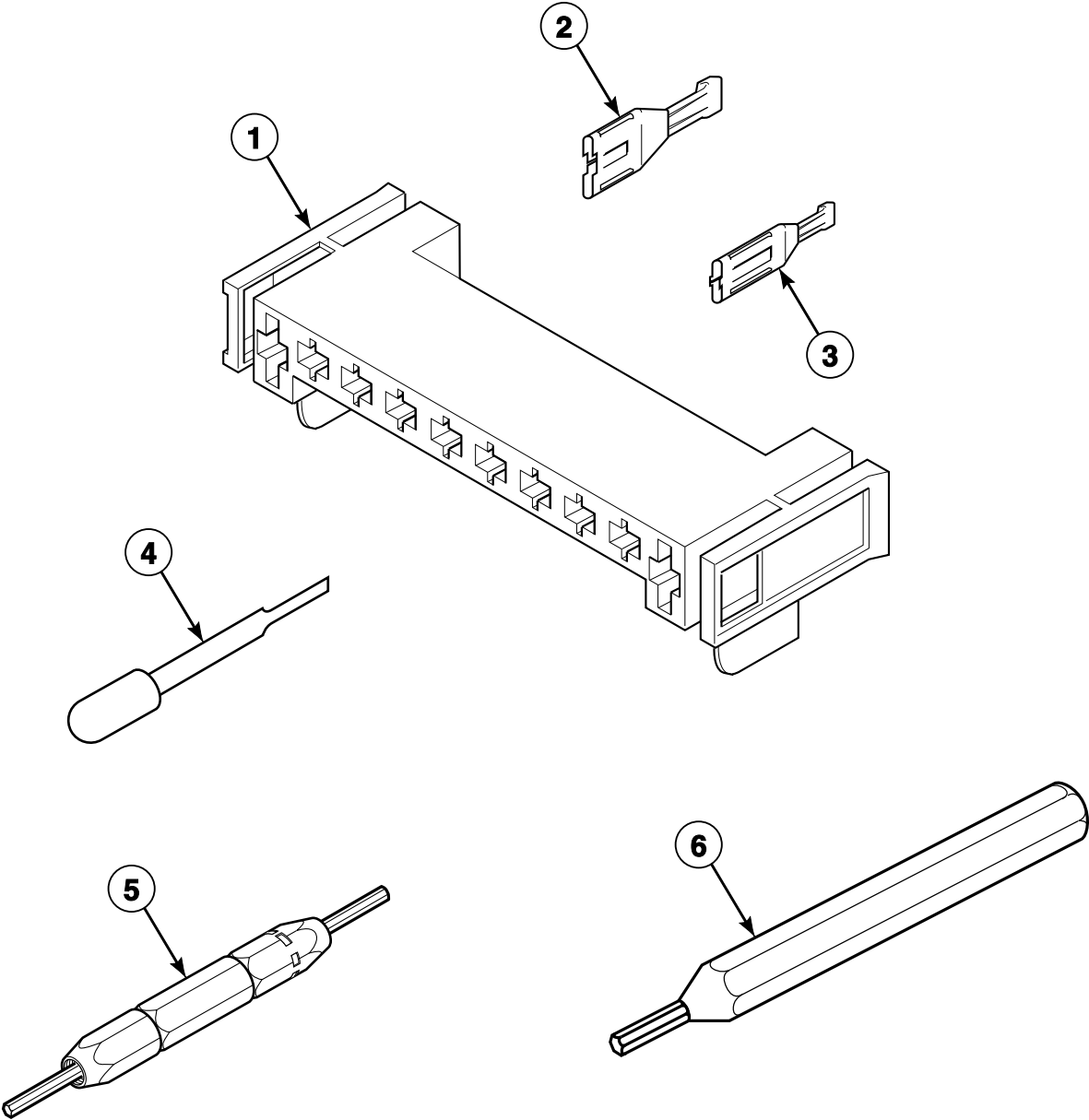
DRY1765P_512030

Terminals

REF	PART NO.	DESCRIPTION	COMMENTS
1	00161	Grounding Clip	
2	00189	Female Spade Terminal	1/8 inch
3	00361	Female Piggyback Terminal	
4	58799	2 Circuit Connector	
5	00223	Female Spade Terminal	1/4 inch; (1) 18 gauge wire
	00121	Female Spade Terminal	1/4 inch; (2) 18 gauge wires or (1) 12 gauge wire
6	N/A	Terminal	
7	00321	Female Spade Terminal	1/4 inch; (2) 18 gauge wires or (1) 12 gauge wire
8	00110	Ring Terminal	No. 10; (1) 18 gauge wire
9	00344	Female Tab Terminal	1/4 inch

N/A = Part no longer available

Terminals and Terminal Extractor Tools



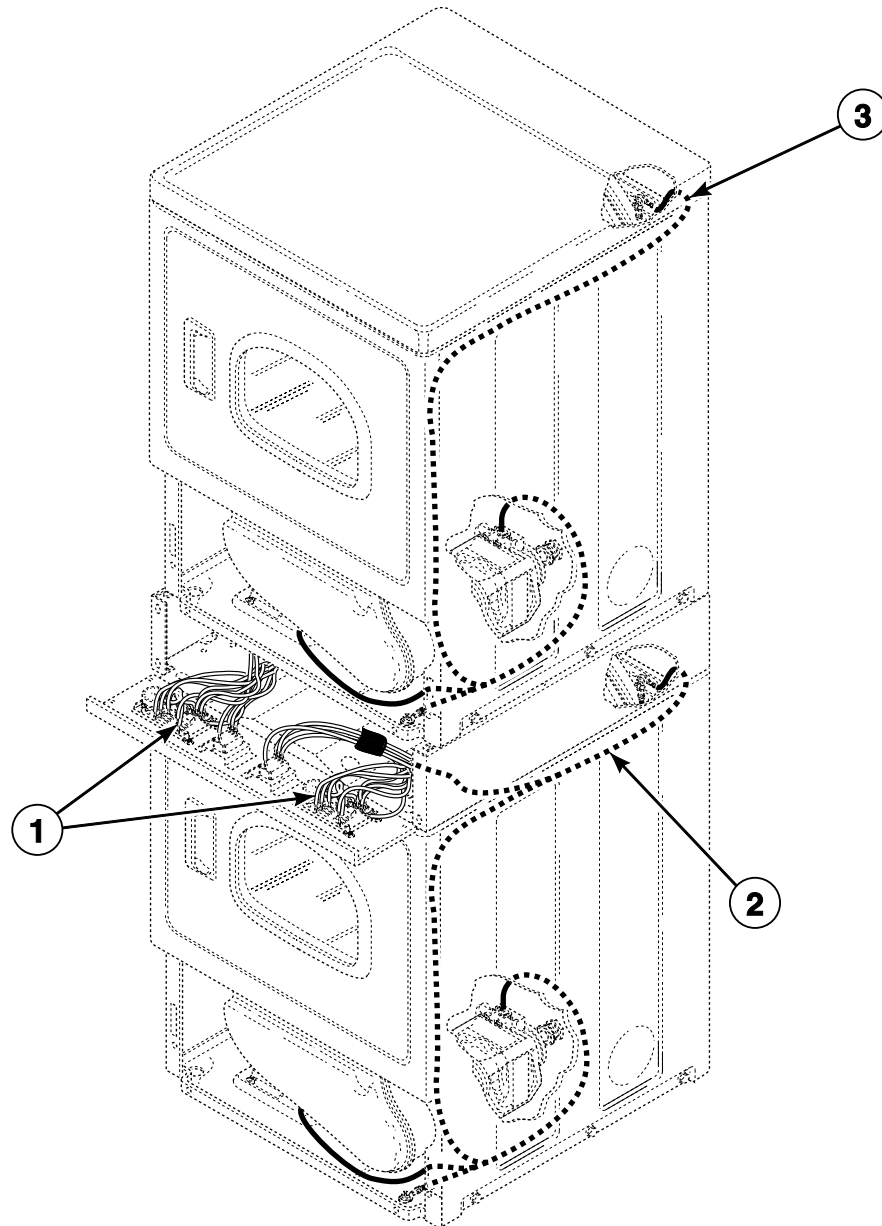
DRY1767P_512030

Terminals and Terminal Extractor Tools

REF	PART NO.	DESCRIPTION	COMMENTS
1	500338	10 Position Housing	
2	00255	Female Terminal	1/4 inch; (1) 12 gauge wire
	00256	Female Terminal	1/4 inch; (1) or (2) 18 gauge wires
3	00188	Female Terminal	For 1 or 2 wire application
4	283P4	Terminal Extractor Tool	For use on Molex connectors
5	190P4	Extractor Tool	For use on electric dryer terminals
6	128P4	Extractor Tool	For use on gas dryer terminals

Wire Harnesses and Wires - Stack Models (Drawing 1 of 3)

Models KGS17A*F and LSL30FGW541NW23



DRY2269P_512030

Wire Harnesses and Wires - Stack Models (Drawing 1 of 3)

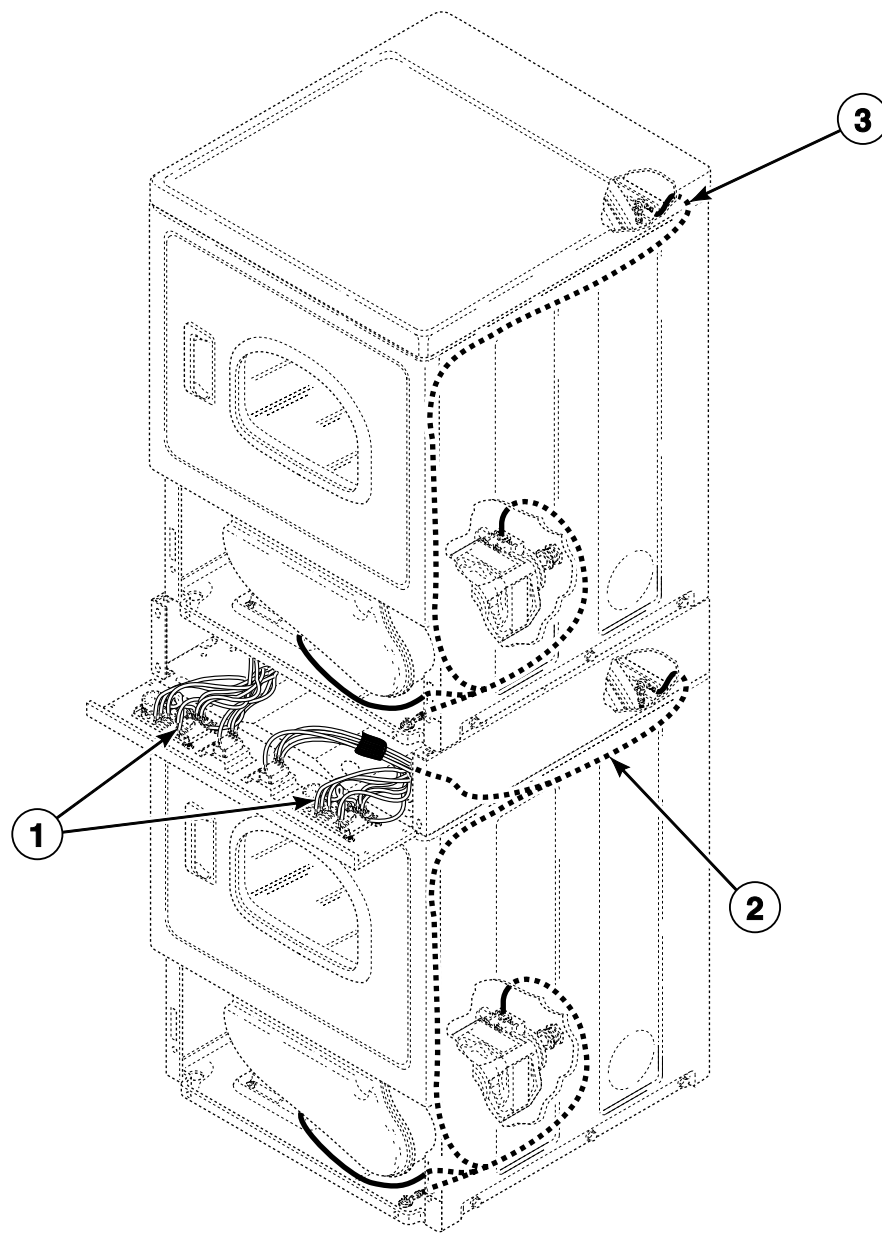
REF	PART NO.	DESCRIPTION	COMMENTS
	45380	12 Gauge Wire	Orange; Order wire by the foot; Order terminals and connectors as required
	45001	18 Gauge Wire	Black; Order wire by the foot; Order terminals and connectors as required
1	511323	Security Cabinet Harness Assembly	Model KGS17A*F
	511767	Security Cabinet Harness Assembly	Model LSL30FGW541NW23
2	511329	Wire Harness Assembly	Model KGS17A*F
	511773P	Wire Harness Assembly	Model LSL30FGW541NW23
3	511325P	Upper Harness Assembly	Model KGS17A*F
	511751	Wire Harness Assembly	Model LSL30FGW541NW23

* Add Letter To Designate Color. L - Almond Q - Bisque W - White

NOTE: Individual wires are not available separately. Order complete wire harness, or order wire by the foot. When applying terminals to wires, it is recommended that the terminals be soldered to the wires.

Wire Harnesses and Wires - Stack Models (Drawing 2 of 3)

Models KES17A*F and KES17A*F1500
Models Through Serial No. 1303025314



DRY2269P_512030

Wire Harnesses and Wires - Stack Models (Drawing 2 of 3)

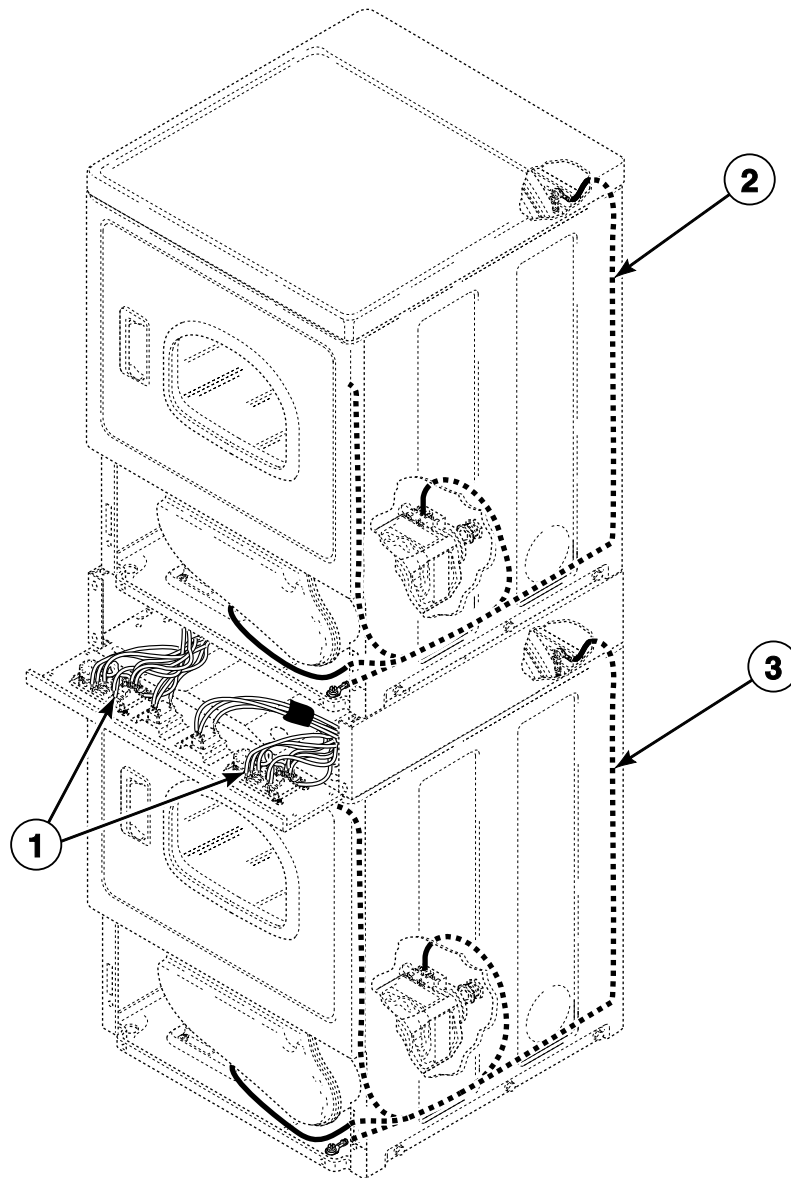
REF	PART NO.	DESCRIPTION	COMMENTS
	45380	12 Gauge Wire	Orange; Order wire by the foot; Order terminals and connectors as required
	45001	18 Gauge Wire	Black; Order wire by the foot; Order terminals and connectors as required
1	511324P	Security Cabinet Harness	
2	511330	Wire Harness Assembly	
3	511322P	Upper Harness Assembly	

* Add Letter To Designate Color. L - Almond Q - Bisque W - White

NOTE: Individual wires are not available separately. Order complete wire harness, or order wire by the foot. When applying terminals to wires, it is recommended that the terminals be soldered to the wires.

Wire Harnesses and Wires - Stack Models (Drawing 3 of 3)

Models KES17A*F and KES17A*F1500
Models Starting Serial No. 1303025315



DRY2289P_512030

Wire Harnesses and Wires - Stack Models (Drawing 3 of 3)

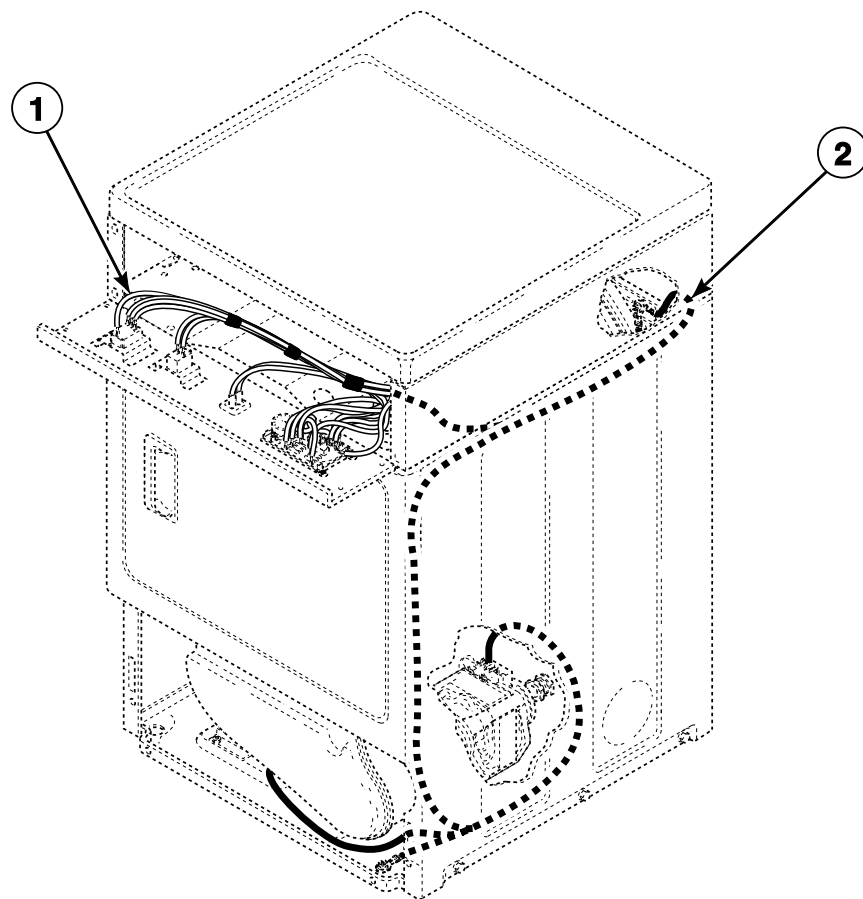
REF	PART NO.	DESCRIPTION	COMMENTS
	45380	12 Gauge Wire	Orange; Order wire by the foot; Order terminals and connectors as required
	45001	18 Gauge Wire	Black; Order wire by the foot; Order terminals and connectors as required
1	511324P	Security Cabinet Harness	
2	513946	Wire Harness Assembly	Upper
3	513948	Wire Harness Assembly	

* Add Letter To Designate Color. L - Almond Q - Bisque W - White

NOTE: Individual wires are not available separately. Order complete wire harness, or order wire by the foot. When applying terminals to wires, it is recommended that the terminals be soldered to the wires.

Wire Harnesses and Wires - Front Control Models (Drawing 1 of 3)

Models BDG30FGS111TW01, FEU17A*F, FEZ17A*F, FGS17A*F, FGU17A*F and FGZ17A*F



DRY2046P_512030

Wire Harnesses and Wires - Front Control Models (Drawing 1 of 3)

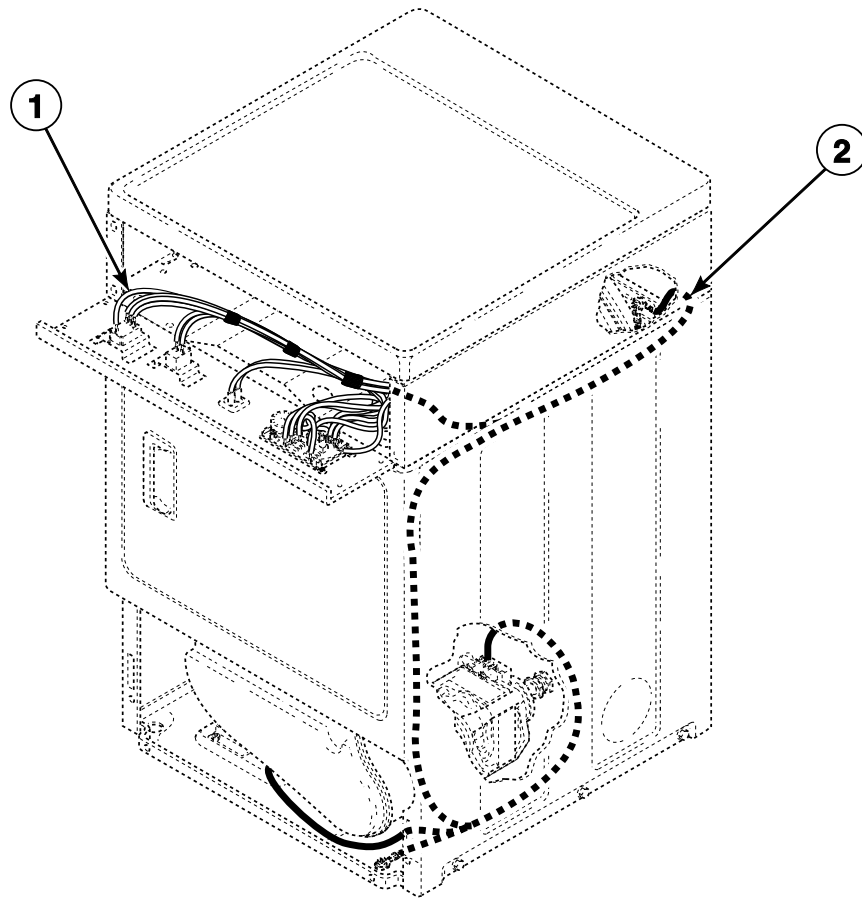
REF	PART NO.	DESCRIPTION	COMMENTS
	45380	12 Gauge Wire	Orange; Order wire by the foot; Order terminals and connectors as required
	45001	18 Gauge Wire	Black; Order wire by the foot; Order terminals and connectors as required
1	511324P	Security Cabinet Harness	Models FEU17A*F and FEZ17A*F
	511323	Security Cabinet Harness Assembly	Models BDG30FGS111TW01, FGS17A*F, FGU17A*F and FGZ17A*F
2	511329	Wire Harness Assembly	Models BDG30FGS111TW01, FGS17A*F, FGU17A*F and FGZ17A*F
	511330	Wire Harness Assembly	Models FEU17A*F and FEZ17A*F

* Add Letter To Designate Color. L - Almond Q - Bisque W - White

NOTE: Individual wires are not available separately. Order complete wire harness, or order wire by the foot. When applying terminals to wires, it is recommended that the terminals be soldered to the wires.

Wire Harnesses and Wires - Front Control Models (Drawing 2 of 3)

Models BDE30FGS171TW01, FES17A*F, FES17A*F1500 and UDE30FGS171TW08
Models Through Serial No. 1303025314



DRY2046P_512030

Wire Harnesses and Wires - Front Control Models (Drawing 2 of 3)

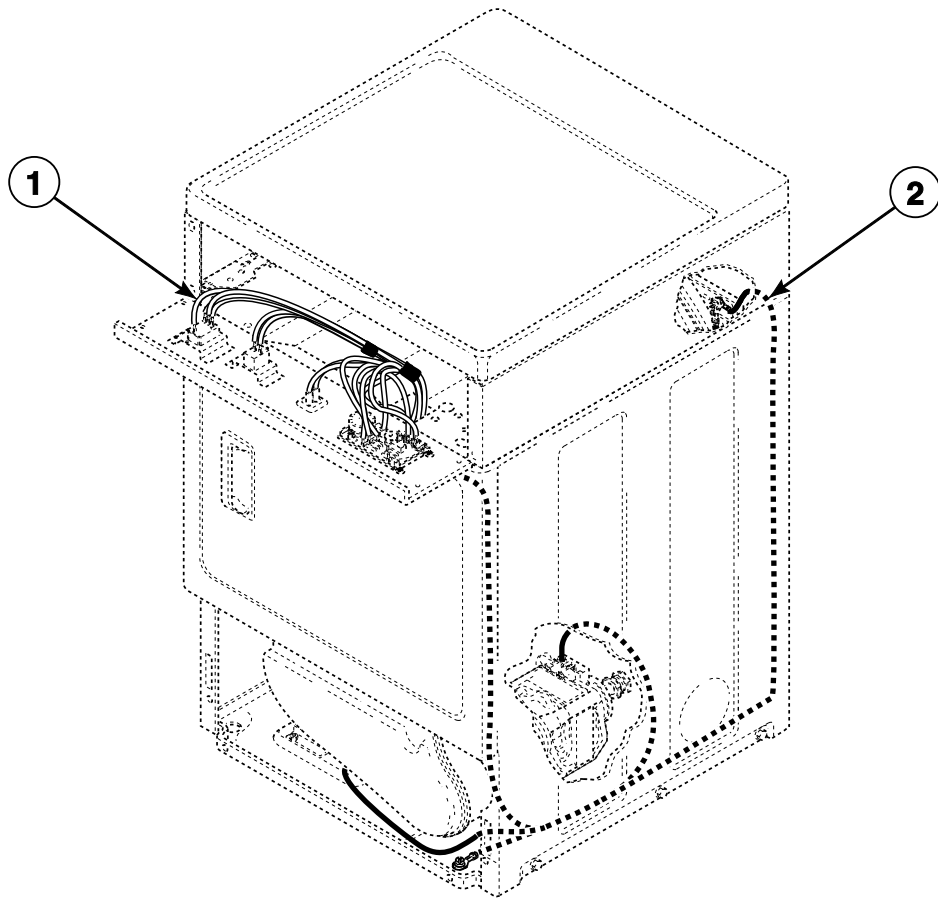
REF	PART NO.	DESCRIPTION	COMMENTS
	45380	12 Gauge Wire	Orange; Order wire by the foot; Order terminals and connectors as required
	45001	18 Gauge Wire	Black; Order wire by the foot; Order terminals and connectors as required
1	511324P	Security Cabinet Harness	
2	511330	Wire Harness Assembly	

* Add Letter To Designate Color. L - Almond Q - Bisque W - White

NOTE: Individual wires are not available separately. Order complete wire harness, or order wire by the foot. When applying terminals to wires, it is recommended that the terminals be soldered to the wires.

Wire Harnesses and Wires - Front Control Models (Drawing 3 of 3)

Models BDE30FGS171TW01, FES17A*F, FES17A*F1500 and UDE30FGS171TW08
Models Starting Serial No. 1303025315



DRY2290P_512030

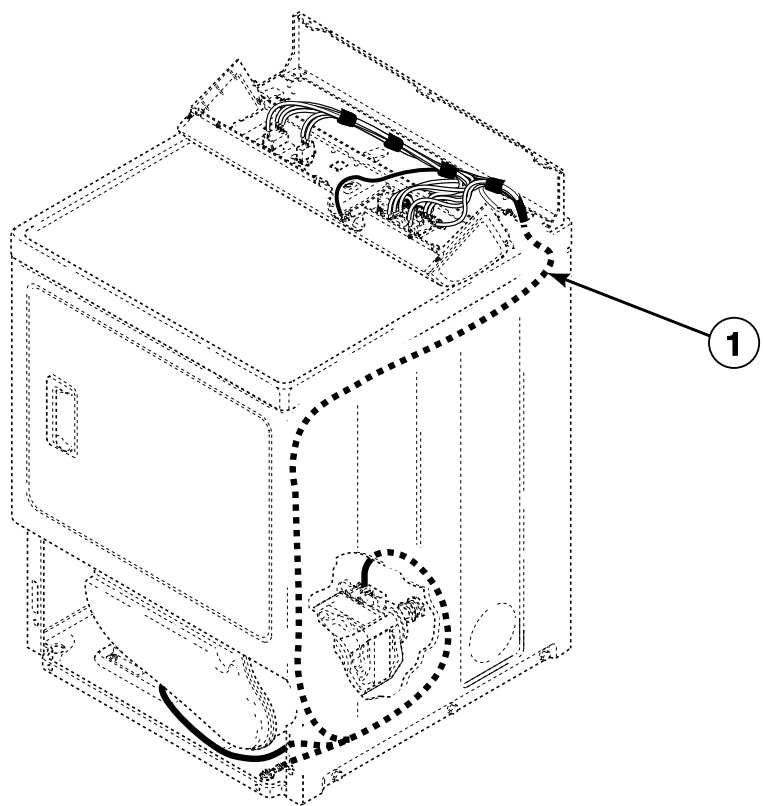
Wire Harnesses and Wires - Front Control Models (Drawing 3 of 3)

REF	PART NO.	DESCRIPTION	COMMENTS
	45380	12 Gauge Wire	Orange; Order wire by the foot; Order terminals and connectors as required
	45001	18 Gauge Wire	Black; Order wire by the foot; Order terminals and connectors as required
1	511324P	Security Cabinet Harness	
2	513948	Wire Harness Assembly	

* Add Letter To Designate Color. L - Almond Q - Bisque W - White

NOTE: Individual wires are not available separately. Order complete wire harness, or order wire by the foot. When applying terminals to wires, it is recommended that the terminals be soldered to the wires.

Wire Harnesses and Wires - Rear Control Models Through Serial No. 1207



DRY2047P_512030

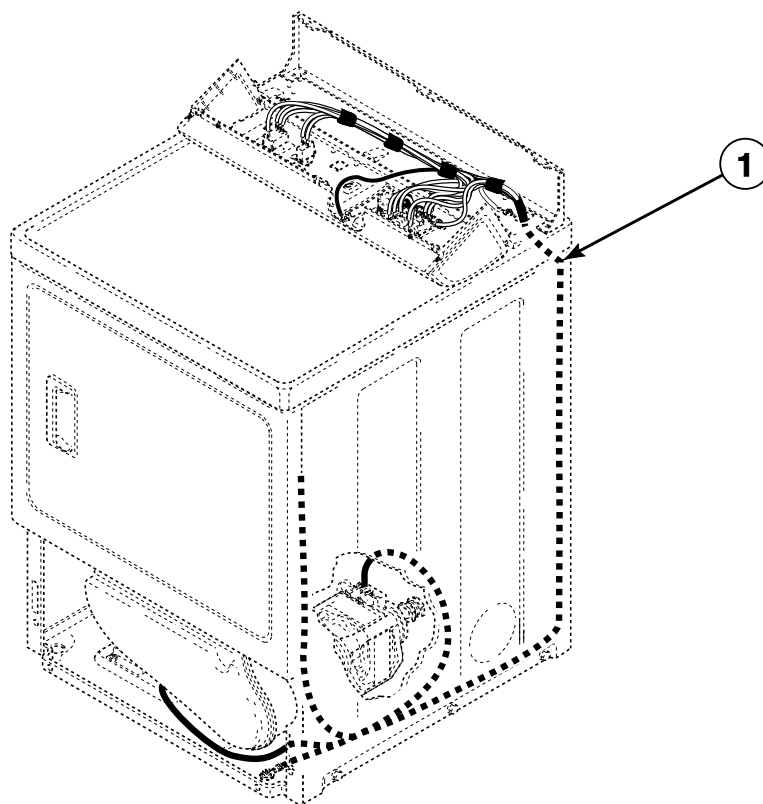
Wire Harnesses and Wires - Rear Control Models Through Serial No. 1207

REF	PART NO.	DESCRIPTION	COMMENTS
	45380	12 Gauge Wire	Orange; Order wire by the foot; Order terminals and connectors as required
	45001	18 Gauge Wire	Black; Order wire by the foot; Order terminals and connectors as required
1	510402P	Wire Harness Assembly	Model LES37A*F
	510403	Wire Harness Assembly	Model LGS37A*F
	510424P	Wire Harness Assembly	Models LDE30RGS153TW01, LDE30RGS173TW01, LES17A*F and LES17A*F1500
	510425P	Wire Harness Assembly	Models LDG30RGS113TW01, LGS17A*F and LGS17A*F1180

* Add Letter To Designate Color. L - Almond Q - Bisque W - White

NOTE: Individual wires are not available separately. Order complete wire harness, or order wire by the foot. When applying terminals to wires, it is recommended that the terminals be soldered to the wires.

Wire Harnesses and Wires - Rear Control Models Starting Serial No. 1207



DRY2268P_512030

Wire Harnesses and Wires - Rear Control Models Starting Serial No. 1207

REF	PART NO.	DESCRIPTION	COMMENTS
	45380	12 Gauge Wire	Orange; Order wire by the foot; Order terminals and connectors as required
	45001	18 Gauge Wire	Black; Order wire by the foot; Order terminals and connectors as required
1	513652	Wire Harness Assembly	Model LES37A*F; Models through Serial No. 1303025314
	514100	Harness Assembly	Model LES37A*F; Models starting Serial No. 1303025315
	513651	Wire Harness Assembly	Model LGS37A*F
	513658	Wire Harness Assembly	Models LDE30RGS153TW01, LDE30RGS173TW01, LES17A*F and LES17A*F1500; Models through Serial No. 1303025314
	513942	Harness Assembly	Models LDE30RGS153TW01, LDE30RGS173TW01, LES17A*F and LES17A*F1500; Models starting Serial No. 1303025315
	513655	Wire Harness Assembly	Models LDG30RGS113TW01, LGS17A*F and LGS17A*F1180

* Add Letter To Designate Color. L - Almond Q - Bisque W - White

NOTE: Individual wires are not available separately. Order complete wire harness, or order wire by the foot. When applying terminals to wires, it is recommended that the terminals be soldered to the wires.

[illegible]

Parts Index

A

Access Panel	
510069LP	15
Access Panel and Guard Assembly	
514252Q	15
514252W	15
Access Panel Assembly	
514250Q	15
514250WP	15
Access Panel Plate	
510903	29, 31
Adhesive	
511637P	19, 21
Air Duct Assembly	
510151LG	19
510151W	19
Anti-Seize Compound	
27604P	17

B

Blower and Fan Kit	
510717P	17
Blower Fan Assembly	
510139P	17
Blower Housing	
511969WP	17
Blower Housing Seal	
510238P	17
Bolt	
29651	7
Booster and Holding Coil	
58804A	27
Bracket	
510146	31
Bumper Pad	
56128	29, 31
Burner Assembly	
510149P	27
Buzzer	
510211	5

C

Cabinet Rear Panel	
510005P	29, 31
Cabinet Side Panel	
510001LP	29
510001QP	29, 31
510001WP	29, 31
510002LP	29
510002QP	29, 31
510002WP	29, 31
Combustion Duct	
510131	25
Connector, 2 Circuit	
58799	37

Connector, 3 Circuit	
58800	35
Contacting Bracket	
511859	31
Control Cabinet Bottom	
801777	7, 9
Control Cabinet Rear	
800867	7
Control Panel Assembly	
511421W	7
512034W	9
Control Support Panel	
503901	5
Cylinder Assembly	
510159WP	19
510265LGP	19
510265WP	19
Cylinder Baffle	
510102LG	19
510102W	19
Cylinder Belt	
511255P	17
Cylinder Glide	
513710	19
Cylinder Glide Bracket	
510145	19
Cylinder Roller	
510708P	21
Cylinder Roller Bracket	
510100	21
Cylinder Seal Assembly	
510207P	19, 21

D

Directional Exhaust Kit	
528P3	29, 31
Disconnect Power Warning Label	
505281	7
Domed Label	
202128	7
800921	7, 9
800922	7
800923	7
Door and Liner Assembly	
511636WP	11
Door Catch Assembly	
510177	15
Door Handle Wedge	
510129	11, 13
Door Liner Grill	
503870W	11
Door Pull and Wedge Kit	
510103LP	13
510103QP	13
510103WP	11, 13
Door Strike	
510181	11, 13
Door Strike Mount	
510127	11, 13

N/A items do not appear in index.

Dryer Base	
513901	29, 31
Dryer Door	
510013LP	13
510013QP	13
510013WP	13
510082WP	11
Dryer Door Window	
503982P	11
Drying Rack	
512082P	19

E

Elbow	
513072	27
Elbow Shut-Off Valve	
510205	27
Electric Clearance Label	
511005	29, 31
End Panel	
504008L	5
504008QP	5
504008WP	5
504009L	5
504009QP	5
504009WP	5
Exhaust Duct	
510137	29, 31
Expansion Clip	
70030501	7, 9
Extractor Tool	
128P4	39
190P4	39

F

Fabric Selector Switch	
513505	5, 7, 9
Felt Pad	
510189	19
Female Piggyback Terminal	
00361	37
Female Pin Terminal	
00117	35
00128	35
00130	35
Female Spade Terminal	
00121	37
00189	37
00223	37
00321	37
Female Tab Terminal	
00344	37
Female Terminal	
00188	39
00255	39
00256	39
Flexible Venting Kit	
521P3	29, 31
Front Bulkhead Assembly	
510266P	19
511033WP	19

N/A items do not appear in index.

Front Panel	
510066LP	15
510066QP	15
510066WP	15
Front Panel Assembly	
513781W	15
Front Panel Seal	
511056	15

G

Gas Clearance Label	
511004	29, 31
Gas Valve Assembly	
510506P	27
60353P	27
Gas Valve Mounting Bracket	
510128	27
Glide Kit	
RB170003	19
Graphic Overlay	
511406	7
512031	9
Graphic Panel	
504020W	5
504197Q	5
504197W	5
Grounding Clip	
00161	37

H

Harness Assembly	
513942	55
514100	55
Harness Strap	
55881	35
Heat Duct Shroud	
510101	25
Heater	
510325P	23
Heater Assembly	
510329P	23
Heater Duct and Screw Assembly	
510025P	23, 25
Heater Kit	
964P3	23
Heater Kit Assembly	
61928	23
Hinge	
511036	7, 11, 13
Hinge Hole Plug	
510186	15
Hold Down Kit	
526P3	29, 31
Hood Back Panel	
510099	5
Housing, 10 Position	
500338	39

I		Motor and Pulley Assembly	
Idler Lever		505869P	17
510133	17	511629P	17
Idler Lever and Wheel Assembly		Motor Hub Ring Kit	
510158	17	590P3	17
Idler Spring		Motor Mount	
510185	17	510060	17
Idler Wheel and Bearing Assembly		Motor Mount Clamp	
510142P	17	510180	17
Igniter and Bracket Assembly		Motor Pulley	
510184P	27	500011	17
		Motor Switch Kit	
		501218P	17
K			
Knob Assembly		N	
36701L	5, 7	Nut	
36701Q	5, 7, 9	44087201	7
36701W	5, 7, 9	52566	17
		56156	17, 21
		800931	9
		N.G. Conversion Kit	
		650P3	27
L			
Lead-In Cord		O	
56222	33	Outlet Cover	
59308	33	500820	23, 25
59373	33		
Lead-In Pipe Assembly		P	
510204	27	Panel Locator	
Left Control Cabinet Side		56079	15, 29, 31
800900LP	7	Plug, 2 Circuit	
800900QP	7, 9	56266	35
800900WP	7, 9	Pop Rivet	
Leveling Leg		685847	7
510135	29, 31	Porcelain Touch-Up Paint	
Limit Thermostat		122P4P	29, 31
510701	23	215P4P	29
510702	25	370P4P	29, 31
Liner and Seal Assembly			
510098W	11	R	
Liner Door Seal		Rear Bulkhead Assembly	
510147P	11, 13	510905WP	21
Liner, Seal and Grill Assembly		511082P	21
510163WP	13	Rear Control Cabinet	
513109P	13	801058	9
Lint Filter		Receptacle, 12 Circuit	
503980LG	19	56855	35
503980W	19	Receptacle, 2 Circuit	
Lint Filter Cover		56451	35
510502LG	19	Receptacle, 3 Circuit	
510502W	19	23039	35
L.P. Conversion Kit		Resistor Assembly	
649P3	27	511277	5, 7, 9
		Retaining Ring	
		23748	17, 21
M			
Male Pin Terminal			
00116	35		
00127	35		
00129	35		

N/A items do not appear in index.

Right Control Cabinet Side	
800915L	7
800915Q	7, 9
800915W	7, 9
Ring Terminal	
00110	37
Roller Kit	
RB170002	21
Rubber Foot	
501855	29

S

Screw	
20530	33
23222	23, 27
31260	17
33562	15
39733	15, 29, 31
430497	9
44023301	21
500226	11
500824	17
501086	5, 7
501285	19
502431	31
502535	17
503688	7, 15, 17, 19, 21, 23, 25, 27, 29, 31
505295	11, 13, 19
505870	11
505970	11
51782	25, 27
52864	19
56124	27
61199	21
62588	19
800930	7, 9
Seal Kit	
RB170001	19, 21
Secondary Coil	
58804B	27
Security Cabinet Harness	
511324P	43, 45, 47, 49, 51
Security Cabinet Harness Assembly	
511323	41, 47
511767	41
Sensor	
510213	27
Shaft	
56461P	17, 21
Speed Clip	
28835	15
Strain Relief	
38384	33
52113	33
Strain Relief Adapter	
502496	33
Switch	
512973	15

T

Terminal Block Assembly	
510190P	21
Terminal Block Shield	
510237	21
Terminal Extractor Tool	
283P4	39
Thermal Fuse Assembly	
511412	23
Thermostat	
504515	17
510707P	17
511957	17
Timer	
505794P	5, 7, 9
505796P	9
Timer and Harness Kit	
505797P	5, 7, 9
Timer Knob Assembly	
510287L	5, 7
512117Q	5, 7
512117W	5, 7
512119W	9
Top and Gusset Assembly	
802247QP	7
802247WP	7
Top Cover	
505808L	5
505808Q	5
505808W	5
Top Hinge	
510136	29, 31
Top Kit	
510032LP	7
510032QP	31
510032WP	31
Top Mounting Bracket	
504228	7
Top Panel Kit	
510029LP	5
510029WP	5
Transformer Kit	
511658P	31

U

Upper Harness Assembly	
511322P	43
511325P	41

W

Warning/Caution Label	
500281	15
Washer	
26509	31
504082	21
52549	17, 21
Window Trim	
503981W	11

Wire Assembly	
510527	23
510528	23
510540	5
Wire Clip	
504034	35
687500	35
Wire Harness Assembly	
510402P	53
510403	53
510424P	53
510425P	53
511303	31
511329	41, 47
511330	43, 47, 49
511751	41
511773P	41
513651	55
513652	55
513655	55
513658	55
513946	45
513948	45, 51
Wire, 12 Gauge	
45380	41, 43, 45, 47, 49, 51, 53, 55
Wire, 18 Gauge	
45001	41, 43, 45, 47, 49, 51, 53, 55

[illegible]