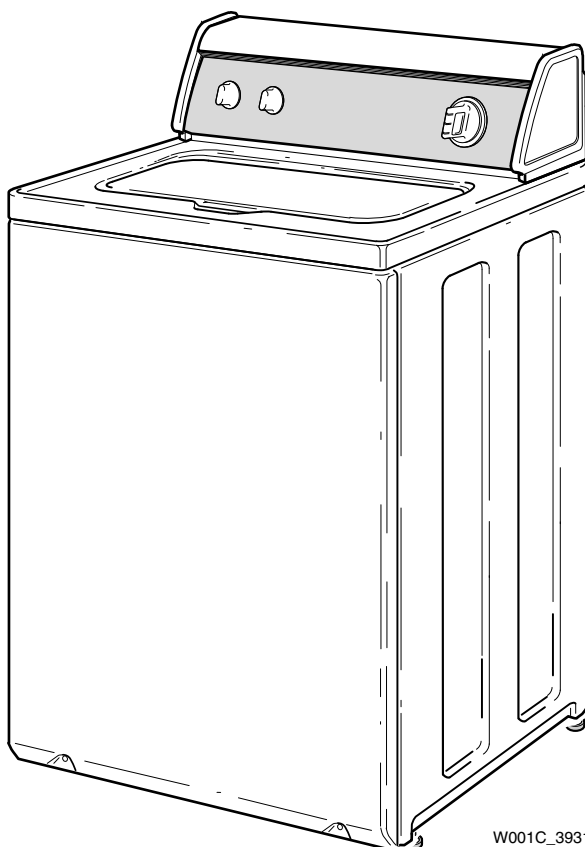


# Homestyle Automatic Washers

Refer to Page 3 for Model Numbers



W001C\_39310



# Table of Contents

Title	Page
Parts Ordering Information.....	2
Serial Plate Location .....	2
Model Identification .....	3
Graphic Panel, Control Support Panel and Controls (Drawing 1 of 2).....	4
Graphic Panel, Control Support Panel and Controls (Drawing 2 of 2).....	6
Graphic Panel, Control Support Panel and Temperature Control.....	8
Lid Switch Assembly .....	10
Top, Lid and Hood Back Panel .....	12
Fill Hose, Mixing Valve-to-Tub Cover Hose, Mixing Valve and Bracket (Drawing 1 of 2).....	14
Fill Hose, Mixing Valve-to-Tub Cover Hose, Mixing Valve and Bracket (Drawing 2 of 2).....	16
Motor, Mounting Bracket, Belt, Pump and Idler Assembly.....	18
Agitator, Drive Bell, Hub and Lip Seal Kit and Washtub .....	20
Agitator, Drive Bell, Hub and Seal Kit and Washtub .....	22
Agitator, Fabric Softener Dispenser, Drive Bell, Hub and Lip Seal Kit and Washtub.....	24
Agitator, Fabric Softener Dispenser, Drive Bell, Hub and Seal Kit and Washtub .....	26
Outer Tub, Cover, Pressure Hose and Counterweight .....	28
Outer Tub, Cover, Bearing and Seal Housing, Pressure Hose and Counterweight.....	30
Outer Tub, Cover, Bearing Housing, Pressure Hose and Counterweight.....	32
Drain Hose and Siphon Break Kit .....	34
Weldment and Bearing Assembly, Brake and Pulley.....	36
Transmission Assembly .....	38
Front Panel, Base Assembly and Cabinet Kit .....	40
Mixing Valve and Motor Connection Blocks, Terminals and Extractor Tool.....	42
Lead-In Cord and Terminals .....	44
Terminals .....	46
Shipping Materials and Special Tools .....	48
Special Tools .....	50
Wire Harnesses and Wires .....	52
Parts Index.....	55

© Copyright 2014, Alliance Laundry Systems LLC

All rights reserved. No part of the contents of this book may be reproduced or transmitted in any form or by any means without the expressed written consent of the publisher.

## Parts Ordering Information

If literature or replacement parts are required, contact the source from whom the machine was purchased or contact Alliance Laundry Systems at (920) 748-3950 for the name and address of the nearest authorized parts distributor.

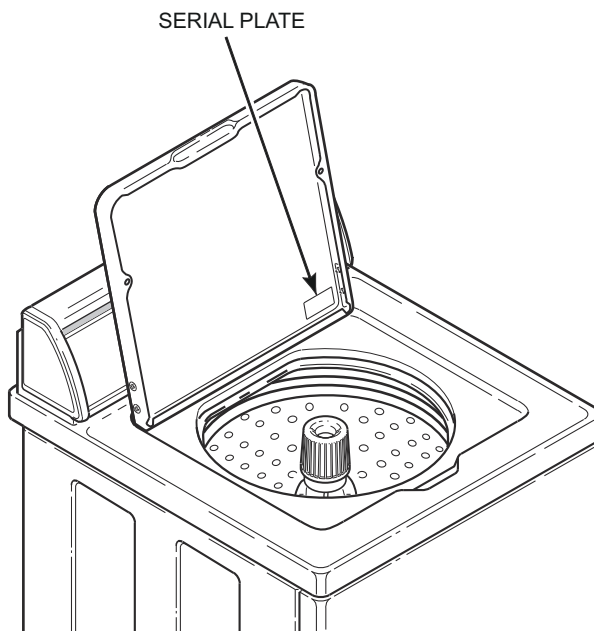
For technical assistance, call either of the numbers listed below:

(920) 748-3121    Ripon, Wisconsin

+32 56 41 20 54    Wevelgem, Belgium

## Serial Plate Location

When calling or writing about your product, be sure to mention model and serial numbers. Model and serial numbers are located on serial plate(s) as shown.



W429S\_39310

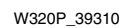
## Model Identification

Information in this manual is applicable to these washer models:

LWNA11SP111TW01	LWS04M*	LWS17M*
LWNB11SP111TW01	LWS04N*	LWS17N*
LWNB11SP111TWAA	LWS05N*	LWS44N*
LWN311PP111TW01	LWS16A*	LWS45A*
LWN311SP111TW01	LWS16B*	LWS45B*
LWN311WP111TW01	LWS16M*	LWS45M*
LWN412SP111TW01	LWS16N*	LWS45N*
LWS01A*	LWS17A*	LWS49N*
LWS01A*C	LWS17B*	
LWS01B*		
LWS01M*		
LWS01N*		
LWS02A*		
LWS02B*		
LWS02M*		
LWS02N*		

\* Add Letter To Designate Color. L - Almond Q - Bisque W - White

All Models Except LWNA11SP111TW01, LWNB11SP111TW01, LWNB11SP111TWAA, LWS05N\* and LWS49N\*



## Graphic Panel, Control Support Panel and Controls (Drawing 1 of 2)

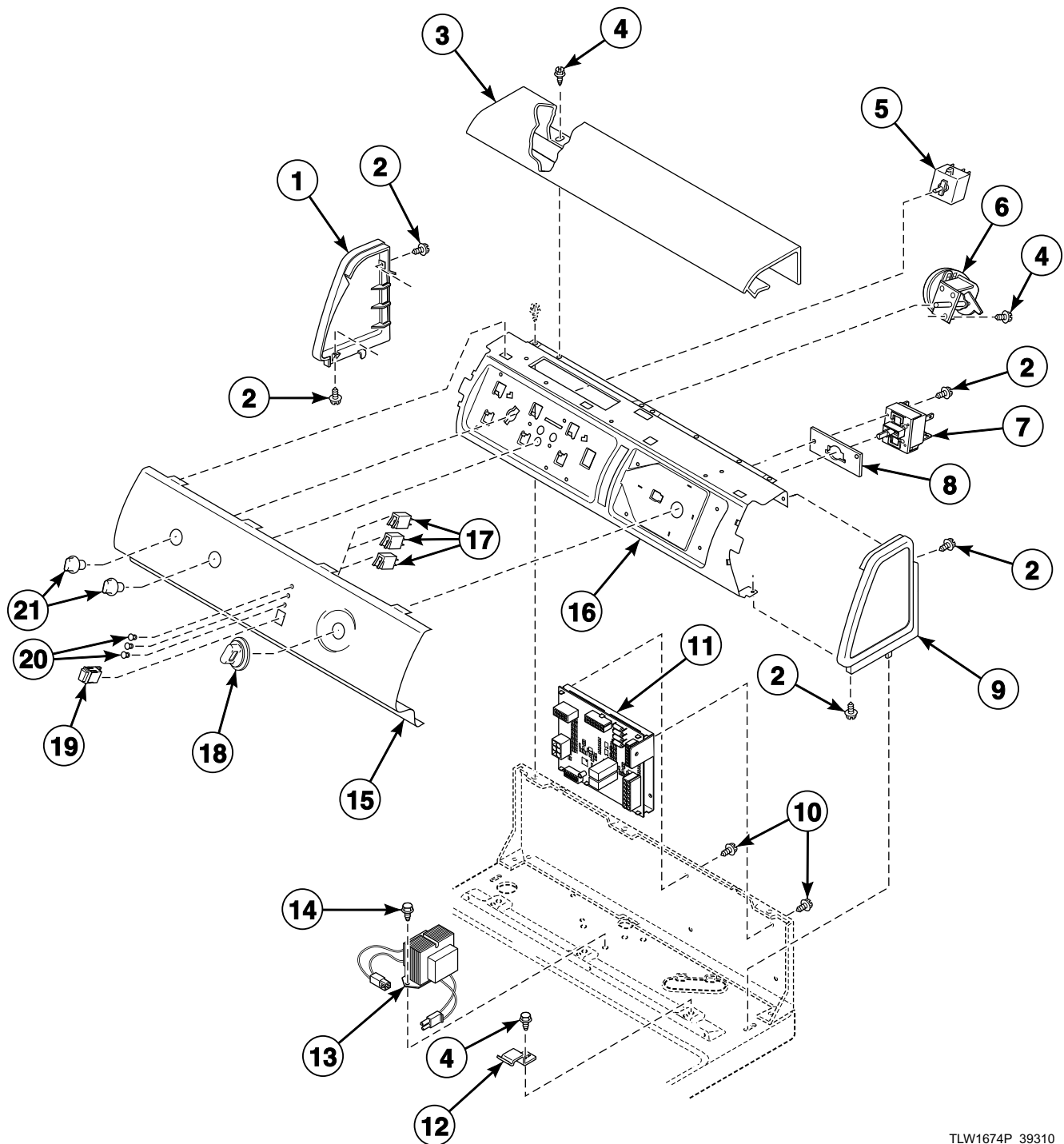
REF	PART NO.	DESCRIPTION	COMMENTS
1	504009WP	End Panel	White; Left
	N/A	End Panel	Almond; Left
	504009QP	End Panel	Bisque; Left
2	501086	Screw	
3	39905W	Top Cover	White
	N/A	Top Cover	Almond
	39905Q	Top Cover	Bisque
4	23962	Screw	
5	36335	Temperature Switch	Models LWS45A*, LWS45B*, LWS45M* and LWS45N*; 4 position
	35115	Temperature Switch	All other models; 3 position
6	39035P	Pressure Switch	Models LWS01A*, LWS01A*C, LWS01B*, LWS01M*, LWS01N*, LWS04M* and LWS04N*
	201609P	Pressure Switch	Models LWN311PP111TW01, LWN311SP111TW01, LWN311WP111TW01 and LWN412SP111TW01
	201927P	Pressure Switch	All other models
7	37927P	Timer	Models LWN412SP111TW01, LWS44N*, LWS45A*, LWS45B*, LWS45M* and LWS45N*
	200927P	Timer	All other models
8	504008WP	End Panel	White; Right
	504008L	End Panel	Almond; Right
	504008QP	End Panel	Bisque; Right
9	35358	Hold-Down Clip	
10	200954W	Graphic Panel	Models LWS04M* and LWS04N*
	39478W	Graphic Panel	Models LWS45A*, LWS45B*, LWS45M* and LWS45N*
	201841W	Graphic Panel	Model LWS44N*
	202236W	Control Panel	Models LWN311PP111TW01, LWN311SP111TW01 and LWN311WP111TW01
	202237W	Control Panel	Model LWN412SP111TW01
	38887W	Graphic Panel	White; All other models
	38887Q	Graphic Panel	Bisque; All other models
11	38171	Control Support Panel	
12	00161	Grounding Clip	
13	N/A	Timer Skirt Assembly	White; Models LWS01A*, LWS02A*, LWS16A*, LWS17A* and LWS45A*
	36700W	Timer Skirt Assembly	White; All other models
	N/A	Timer Skirt Assembly	Almond; All other models
	36700Q	Timer Skirt Assembly	Bisque; All other models
14	N/A	Timer Knob	White; Models LWS01A*, LWS02A*, LWS16A*, LWS17A* and LWS45A*
	201501W	Timer Knob	White; All other models
	201501Q	Timer Knob	Bisque; All other models
15	33688	Knob Assembly	White; Models LWS01A*, LWS02A*, LWS16A*, LWS17A* and LWS45A*
	36701W	Knob Assembly	White; All other models
	36701L	Knob Assembly	Almond; All other models
	36701Q	Knob Assembly	Bisque; All other models

\* Add Letter To Designate Color. L - Almond Q - Bisque W - White

N/A = Part no longer available

# Graphic Panel, Control Support Panel and Controls (Drawing 2 of 2)

Model LWNA11SP111TW01



TLW1674P\_39310

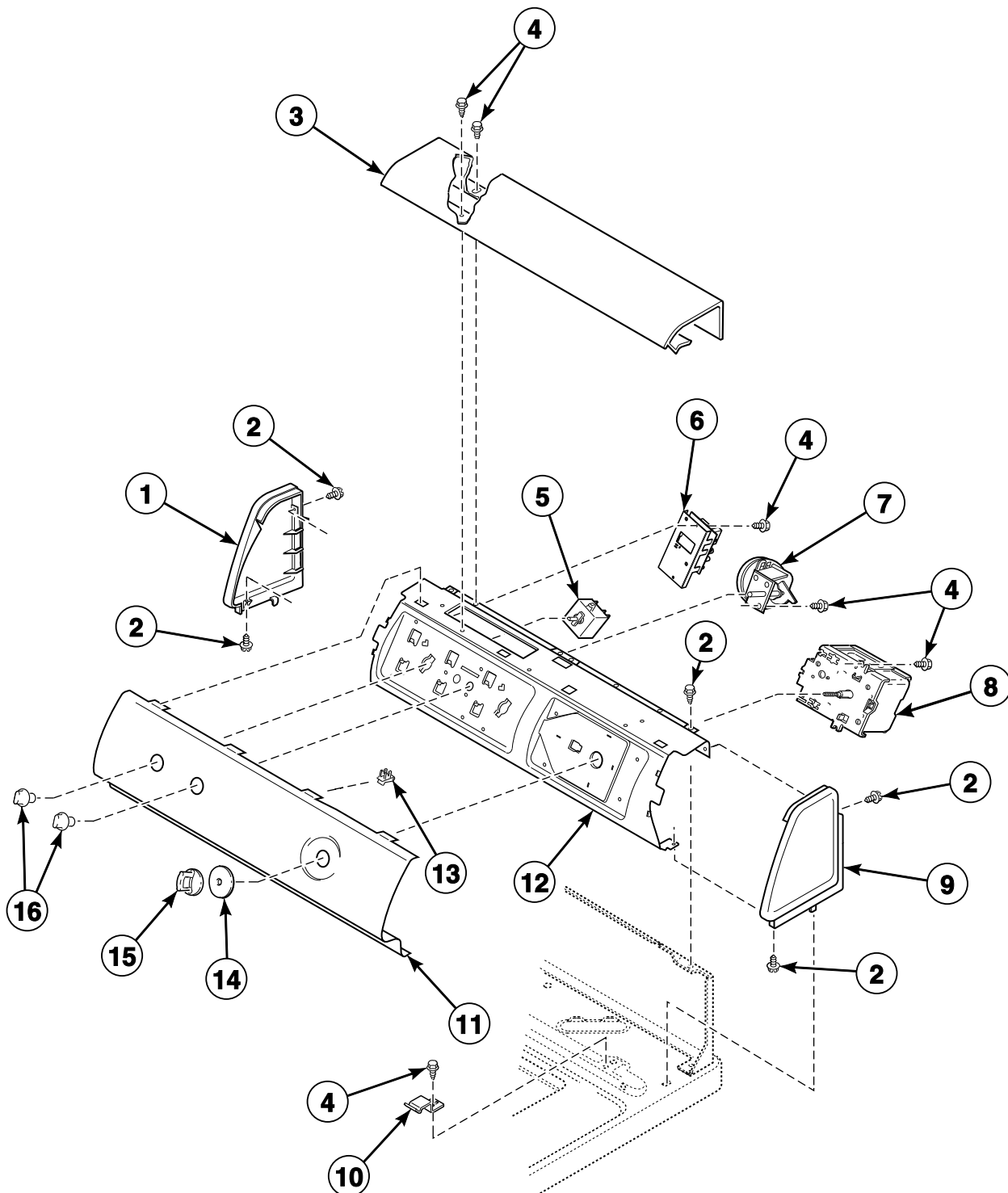


## Graphic Panel, Control Support Panel and Controls (Drawing 2 of 2)

REF	PART NO.	DESCRIPTION	COMMENTS
1	504009WP	End Panel	Left
2	501086	Screw	
3	39905W	Top Cover	
4	23962	Screw	
5	35115	Temperature Switch	
6	201609P	Pressure Switch	
7	801240	Cycle Switch	
8	801390	Cycle Switch Bracket	
9	504008WP	End Panel	Right
10	501524	Screw	
11	202320	Control Assembly	
12	35358	Hold-Down Clip	
13	201587P	Transformer	
14	503661	Screw	
15	202324W	Graphic Panel	
16	38171	Control Support Panel	
17	801356	Indicator Light	
18	512117W	Timer Knob Assembly	
19	801434W	Push-to-Start Switch	
20	801435	Indicator Light Lens	
21	36701W	Knob Assembly	

# Graphic Panel, Control Support Panel and Temperature Control

Models LWNB11SP111TW01, LWNB11SP111TWAA, LWS05N\* and LWS49N\*



TLW1503P\_39310

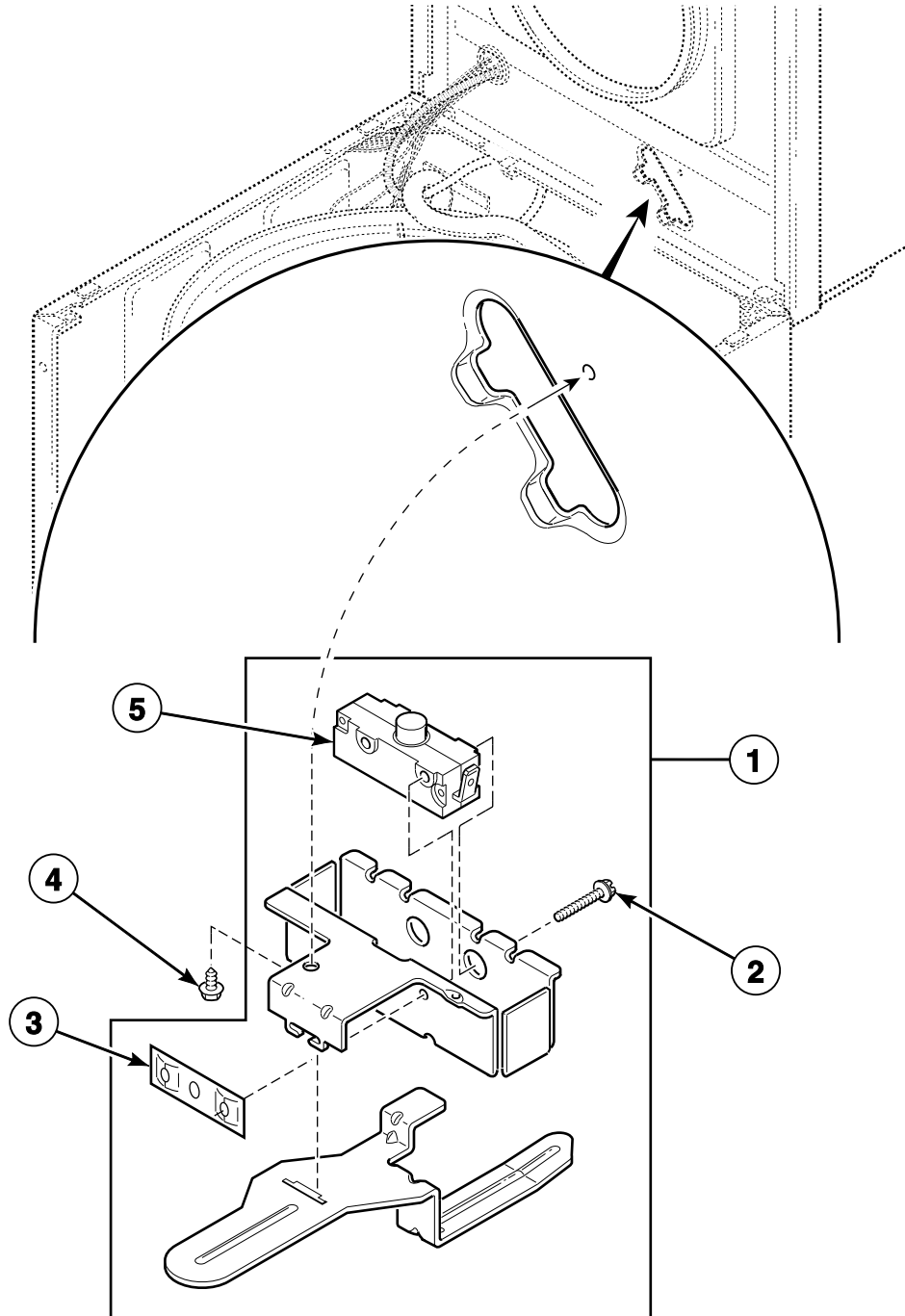
# Graphic Panel, Control Support Panel and Temperature Control

REF	PART NO.	DESCRIPTION	COMMENTS
1	504009WP	End Panel	White; Left
	N/A	End Panel	Almond; Left
	504009QP	End Panel	Bisque; Left
2	501086	Screw	
3	39905W	Top Cover	White
	N/A	Top Cover	Almond
	39905Q	Top Cover	Bisque
4	23962	Screw	
5	35115	Temperature Switch	
6	201279P	Temperature Control	
7	201927P	Pressure Switch	
8	201100P	Timer	Models LWNB11SP111TW01, LWNB11SP111TWAA and LWS05N*
	201101	Timer	Model LWS49N*
9	504008WP	End Panel	White; Right
	504008L	End Panel	Almond; Right
	504008QP	End Panel	Bisque; Right
10	35358	Hold-Down Clip	
11	201324W	Graphic Panel	Models LWNB11SP111TW01, LWNB11SP111TWAA and LWS05N*
	201326W	Graphic Panel	Model LWS49N*
12	38171	Control Support Panel	
13	00161	Grounding Clip	
14	36700W	Timer Skirt Assembly	White
	N/A	Timer Skirt Assembly	Almond
	36700Q	Timer Skirt Assembly	Bisque
15	201501W	Timer Knob	White
	201501Q	Timer Knob	Bisque
16	36701W	Knob Assembly	White
	36701L	Knob Assembly	Almond
	36701Q	Knob Assembly	Bisque

\* Add Letter To Designate Color. L - Almond Q - Bisque W - White

N/A = Part no longer available

# Lid Switch Assembly

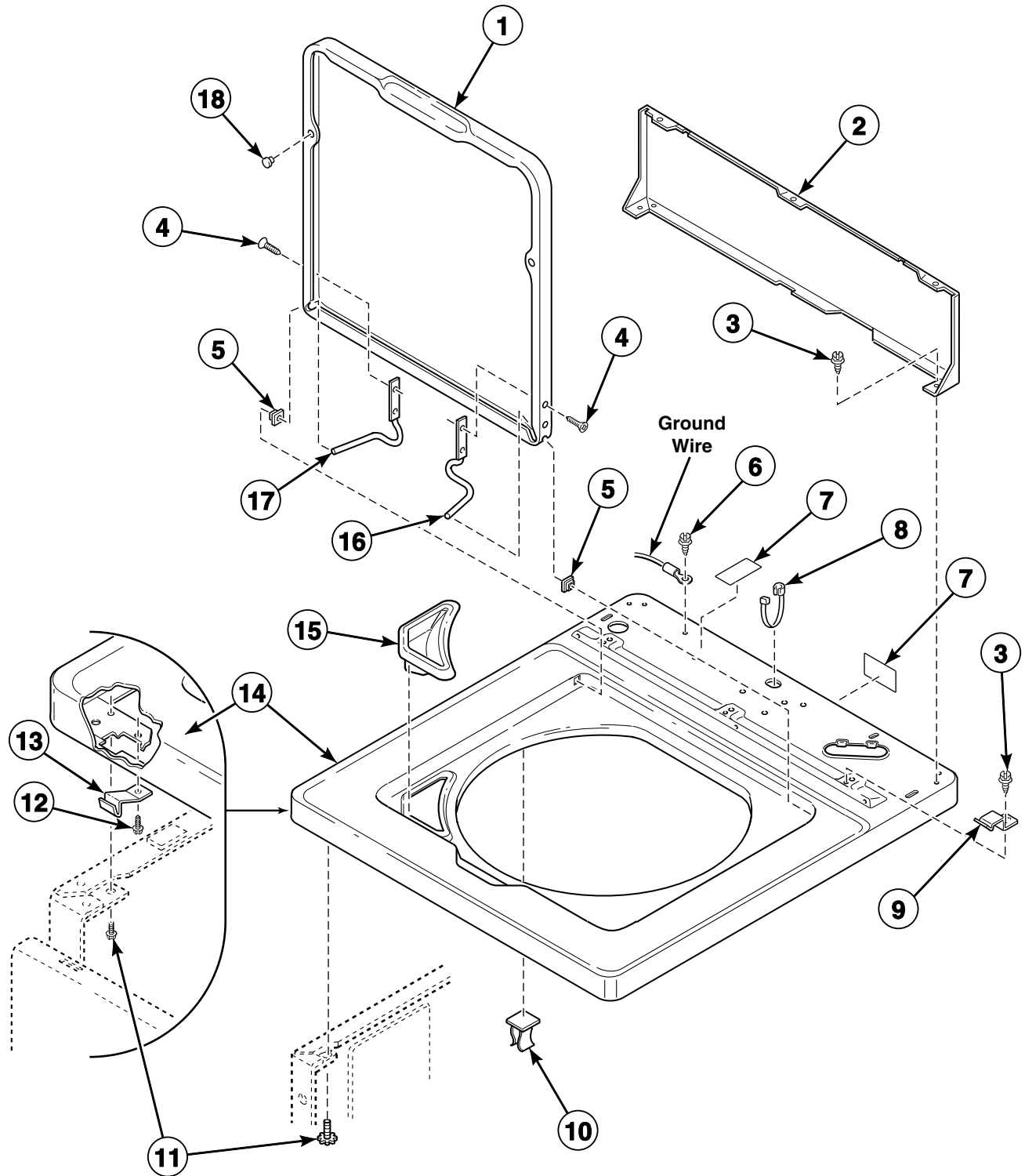


TLW1832B\_39310

## Lid Switch Assembly

REF	PART NO.	DESCRIPTION	COMMENTS
1	37631	Lid Switch Assembly	
2	M402574	Screw	
3	M400981	Nut	
4	23962	Screw	
5	33445	Switch	

## Top, Lid and Hood Back Panel



TLW1477P\_39310

## Top, Lid and Hood Back Panel

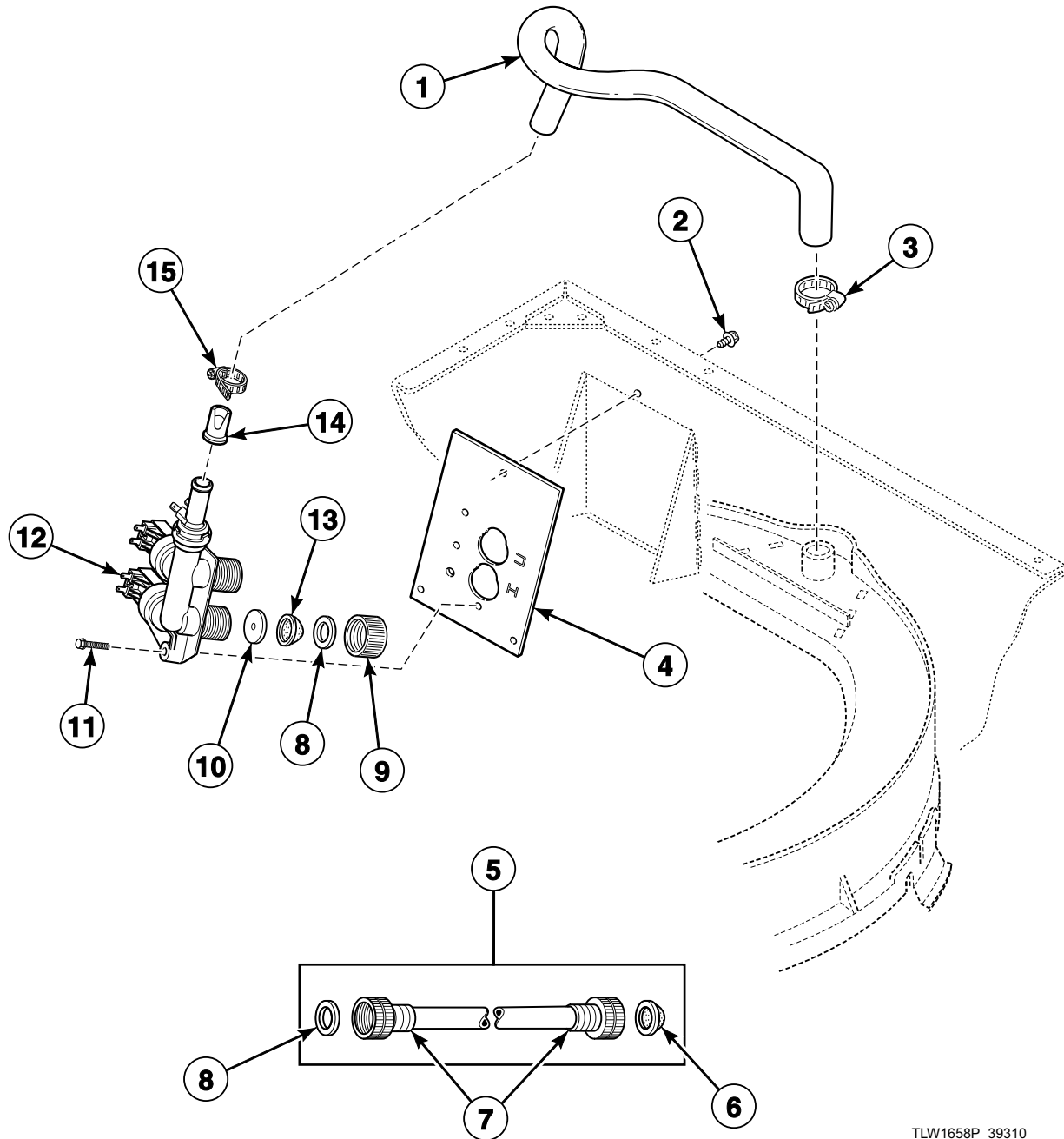
REF	PART NO.	DESCRIPTION	COMMENTS
1	202325WP	Lid	Model LWNA11SP111TW01
	201502WP	Lid	White; All other models
	N/A	Lid	Almond; All other models
	201502QP	Lid	Bisque; All other models
2	202319	Rear Panel Assembly	Model LWNA11SP111TW01
	37782	Hood Back Panel	All other models
3	23962	Screw	
4	34337	Screw	
5	33446	Bushing	
6	52909	Screw	
7	39251	Warning Label	Model LWS45A*
	500316	Warning Label	All other models
8	38384	Strain Relief	
9	35358	Hold-Down Clip	
10	36519	Hinge Stop Clip	
11	33562	Screw	
12	501086	Screw	
13	38271	Hold-Down Clip	Use for older style panel attachment
14	202326WP	Top Assembly	Model LWNA11SP111TW01
	37992WP	Top	White; All other models
	37992LP	Top	Almond; All other models
	37992QP	Top	Bisque; All other models
15	38382	Bleach Dispenser	All models except LWNA11SP111TW01
16	36437	Lid Hinge	Right
17	36513	Lid Hinge	Left
18	21685	Bumper	

\* Add Letter To Designate Color. L - Almond Q - Bisque W - White

N/A = Part no longer available

# Fill Hose, Mixing Valve-to-Tub Cover Hose, Mixing Valve and Bracket (Drawing 1 of 2)

Models LWNB11SP111TW01, LWNB11SP111TWAA, LWS05N\* and LWS49N\*



TLW1658P\_39310



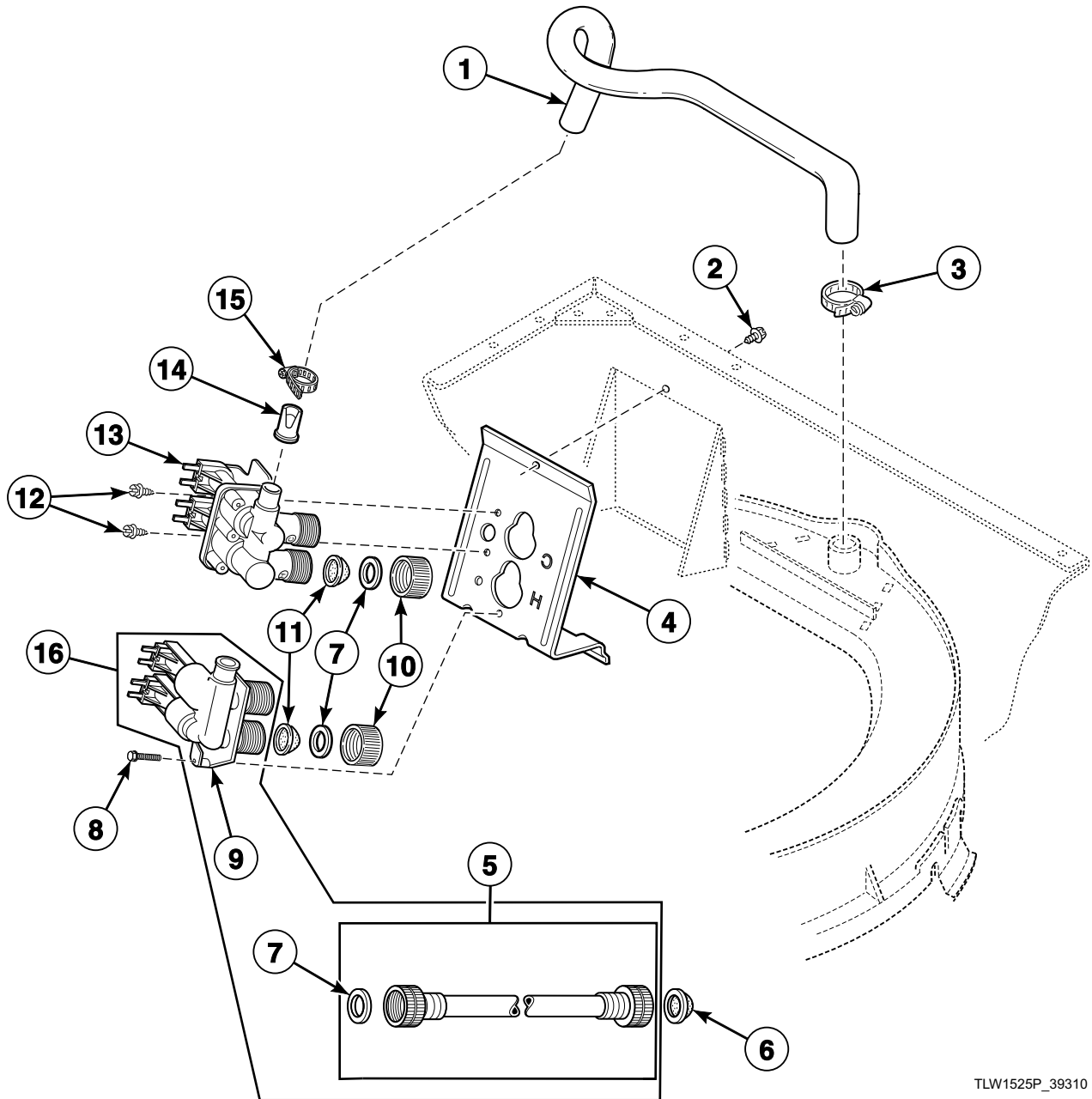
## Fill Hose, Mixing Valve-to-Tub Cover Hose, Mixing Valve and Bracket (Drawing 1 of 2)

REF	PART NO.	DESCRIPTION	COMMENTS
1	201302P	Mixing Valve-to-Tub Cover Hose	
2	33562	Screw	
3	800803	Hose Clamp	
4	201303	Mixing Valve Bracket	
5	F200116	Water Hose	5 feet; Includes items 6 and 8
6	803615	Washer	Filter screen
	802254	Washer	Flow restrictor; Water pressure reducer; Available for water pressure up to but not exceeding 120 psi
7	20617	Fill Hose	8 feet
	20618	Fill Hose	10 feet
8	20290	Washer	
9	24145	Cap	Use to cap off hot water side of mixing valve on certain models
10	202247	Orifice	Models LWNB11SP111TW01 and LWNB11SP111TWAA
11	39397	Screw	
12	201304P	Mixing Valve	
13	24122	Mixing Valve Screen	
14	34500	Backflow Preventer	
15	36801	Hose Clamp	

\* Add Letter To Designate Color. L - Almond Q - Bisque W - White

# **Fill Hose, Mixing Valve-to-Tub Cover Hose, Mixing Valve and Bracket (Drawing 2 of 2)**

All Models Except LWNB11SP111TW01, LWNB11SP111TWAA, LWS05N\* and LWS49N\*



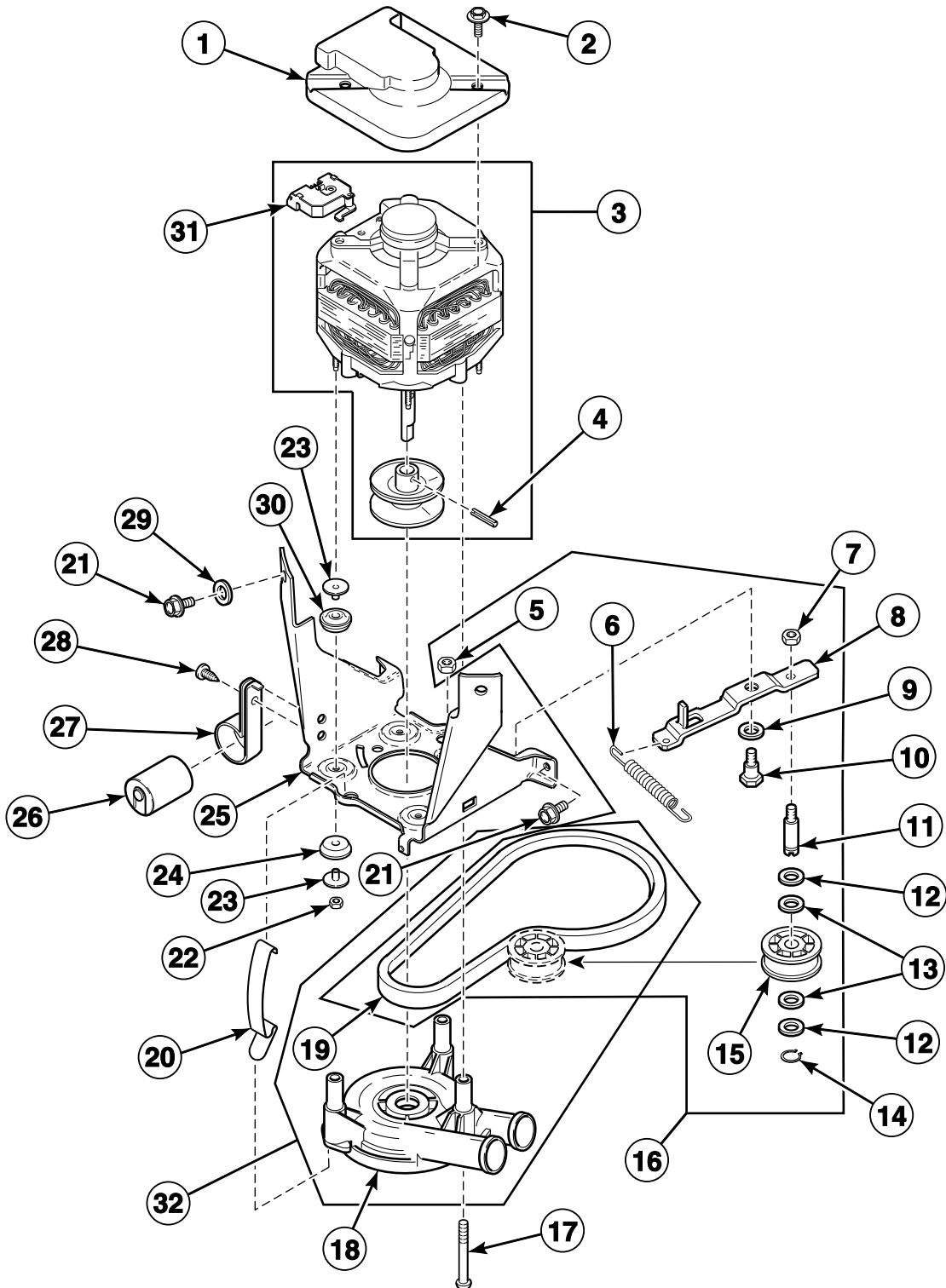
TLW1525P\_39310

## Fill Hose, Mixing Valve-to-Tub Cover Hose, Mixing Valve and Bracket (Drawing 2 of 2)

REF	PART NO.	DESCRIPTION	COMMENTS
1	38155	Mixing Valve-to-Tub Cover Hose	
2	33562	Screw	
3	800803	Hose Clamp	
4	39407	Mixing Valve Mounting Bracket	
5	20617	Fill Hose	8 feet
	20618	Fill Hose	10 feet
	F200116	Water Hose	4 feet; Includes 2 of item 7
6	803615	Washer	Filter screen
	802254	Washer	Water pressure reducer; Available for water pressure up to but not exceeding 120 psi
7	20290	Washer	
8	39397	Screw	Use with item 8
9	201402P	Mixing Valve	All models except LWS44N* starting Serial No. 9809033481 and continuing through Serial Nos. beginning 0611
	201468P	Mixing Valve	Model LWNA11SP111TW01; Models starting Serial Nos. beginning 0612
10	24145	Cap	Use to cap off hot water side of mixing valve on certain models
11	24122	Mixing Valve Screen	
12	501086	Screw	Use with item 12
13	38495P	Mixing Valve	All models except LWS44N* through Serial No. 9809033480
14	34500	Backflow Preventer	
15	36801	Hose Clamp	
16	RB150001	Mixing Valve Kit	Includes items 5 and 9 (201402P Mixing Valve)

\* Add Letter To Designate Color. L - Almond Q - Bisque W - White

# Motor, Mounting Bracket, Belt, Pump and Idler Assembly



TLW1479P\_39310

# Motor, Mounting Bracket, Belt, Pump and Idler Assembly

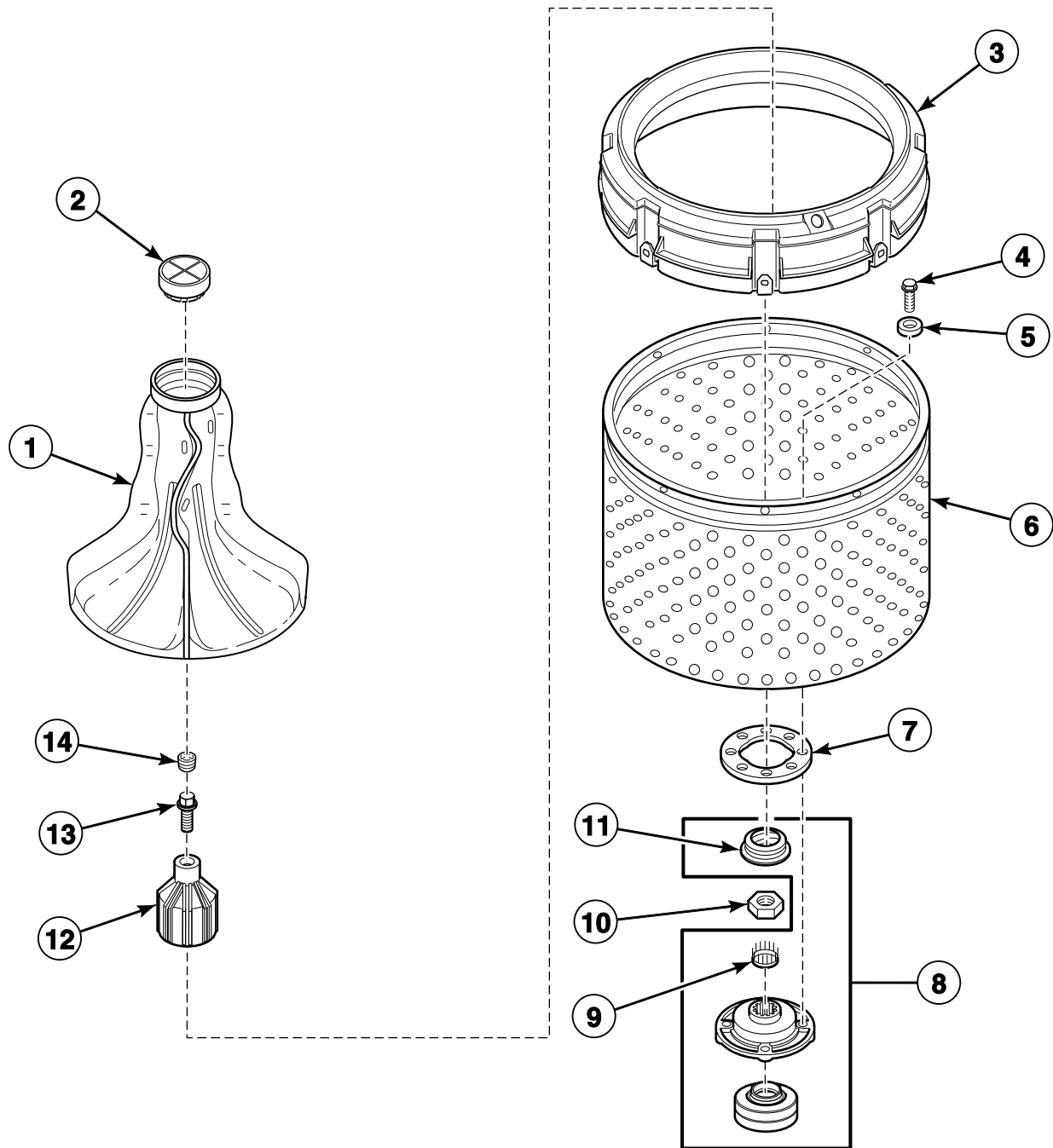
REF	PART NO.	DESCRIPTION	COMMENTS
1	34754	Motor Shield	
2	36639	Screw	
3	202322P	Motor Assembly	1 speed; 115 Volt/60 Hertz; Model LWNA11SP111TW01
	201615P	Motor Kit	2 speed; 120 Volt/60 Hertz; Models LWS45A*, LWS45B*, LWS45M*, LWS45N* and LWS49N*; Model LWS44N* through Serial Nos. beginning 0903
	38034P	Motor Kit	Model LWN412SP111TW01; Model LWS44N* starting Serial Nos. beginning 0904
	38036P	Motor Kit	1 speed; 115 Volt/60 Hertz; All other models
4	10416	Roll Pin	Models through Serial No. 0011013645
5	52566	Nut	
6	39666	Idler Lever Spring	Models through Serial No. 0011003353 and starting again with Serial Nos. beginning 0403
	200658	Idler Lever Spring	Models starting Serial No. 0011003354 and continuing through Serial Nos. beginning 0304
	201189	Idler Lever Spring	Models starting Serial Nos. beginning 0304 and continuing through Serial Nos. beginning 0403 and starting again with Serial No. 0510022781 and continuing through Serial Nos. beginning 1212
	202032	Idler Lever Spring	Models starting Serial Nos. beginning 1212; Use on units experiencing low RPM
7	28803	Nut	
8	38011	Idler Lever	
9	81392	Washer	
10	27229	Screw	
11	56461P	Shaft	Models through Serial No. 0107000541
	210186	Idler Shaft	Models starting Serial No. 0107000542
12	504082	Washer	Models starting Serial No. 0107000542
13	52549	Washer	Nylatron
14	23748	Retaining Ring	
15	38225P	Idler Pulley	
16	959P3	Idler Lever Kit	Models with the letter "M" or "N" in the 3rd or 6th character of the model number; Includes items 5-15, 201189 Idler Lever Spring and 38174 Agitate and Spin Belt
17	34565	Screw	Models through Serial No. 0204019086
18	201566P	Pump	
	201442P	Pump Assembly	Heavy duty
19	200923	Agitate and Spin Belt	Model LWNA11SP111TW01
	37820	Agitate and Spin Belt	All other models through Serial No. 0011003353
	38174	Agitate and Spin Belt	All other models starting Serial No. 0011003354
20	210202	Spring Clip	Models starting Serial No. 0204019087
21	35369	Screw	
22	685846	Nut	
23	38325	Isolator Post	
24	38396	Motor Mount	
25	200941	Motor Mount Bracket	
26	37377	Capacitor	Models LWNA11SP111TW01 and LWN412SP111TW01; Model LWS44N* starting Serial Nos. beginning 0904
27	37535	Capacitor Clamp	Models LWNA11SP111TW01 and LWN412SP111TW01; Model LWS44N* starting Serial Nos. beginning 0904
28	52909	Screw	Models LWNA11SP111TW01 and LWN412SP111TW01; Model LWS44N* starting Serial Nos. beginning 0904
29	37772	Washer	
30	38395	Motor Mount	
31	N/A	Motor Switch	
32	RB150002	Belt and Pump Kit	Models through Serial No. 0011003353; Includes items 18 (201566P Pump) and 19 (37820 Agitate and Spin Belt)
	RB150003	Belt and Pump Kit	Models starting Serial No. 0011003354; Includes items 18 (201566P Pump) and 19 (38174 Agitate and Spin Belt)

\* Add Letter To Designate Color. L - Almond Q - Bisque W - White

N/A = Part no longer available

# Agitator, Drive Bell, Hub and Lip Seal Kit and Washtub

Models LWNA11SP111TW01, LWNB11SP111TW01, LWNB11SP111TWAA, LWN311PP111TW01,  
LWS01N\*, LWS02N\*, LWS04N\* and LWS05N\*



TLW1483P\_39310

# Agitator, Drive Bell, Hub and Lip Seal Kit and Washtub

REF	PART NO.	DESCRIPTION	COMMENTS
1	33174	Agitator	Models LWNA11SP111TW01, LWNB11SP111TW01, LWNB11SP111TWAA, LWN311PP111TW01, LWS01N*, LWS02N* and LWS05N*
	33513	Agitator	Model LWS04N*
2	36515	Agitator Cap	Use with 33174 Agitator
3	39836	Balance Ring Assembly	Model LWNA11SP111TW01
	39837	Balance Ring Assembly	All other models
4	27202	Screw	
5	28094	Washer	Rubber; Use with porcelain washtub
6	202374	Tub Assembly	Stainless steel; Model LWNA11SP111TW01
	39250P	Tub Kit	Blue porcelain; Models LWN311PP111TW01 and LWS02N*
	719P3	Washtub Kit	Stainless steel; Models LWNB11SP111TW01, LWNB11SP111TWAA, LWS04N* and LWS05N*
	39252P	Tub Assembly	Blue porcelain; Model LWS01N*
7	39122	Washtub Gasket	
8	766P3A	Hub and Lip Seal Kit	DO NOT use any sealant other than 200996P Sealant; Includes item 12 and installation tool
	200996P	Sealant	Use with hub and lip seal kit
9	29728	Spline Insert	
10	29220	Nut	
11	36425	Bell and Transmission Tube Seal	
12	39508P	Drive Bell and Seal Kit	Includes items 11, 13 and 14
13	39432	Screw	
14	36511	Bell Plug	

\* Add Letter To Designate Color. L - Almond Q - Bisque W - White

Models LWS01A\*, LWS01A\*C, LWS01B\*, LWS01M\*, LWS02A\*, LWS02B\*, LWS02M\* and LWS04M\*

This exploded view diagram illustrates the assembly of a 16mm lens. The components are numbered as follows:

- 1**: Front lens element.
- 2**: Front lens element mounting ring.
- 3**: Front lens element O-ring.
- 4**: Rear lens element mounting ring.
- 5**: Rear lens element O-ring.
- 6**: Rear lens element O-ring.
- 7**: Rear lens element.
- 8**: Rear lens element mounting ring.
- 9**: Lens barrel assembly.
- 10**: Lens barrel O-ring.
- 11**: Lens barrel O-ring.
- 12**: Lens barrel O-ring.
- 13**: Lens barrel O-ring.
- 14**: Lens barrel O-ring.
- 15**: Lens barrel O-ring.
- 16**: Lens barrel O-ring.

39310



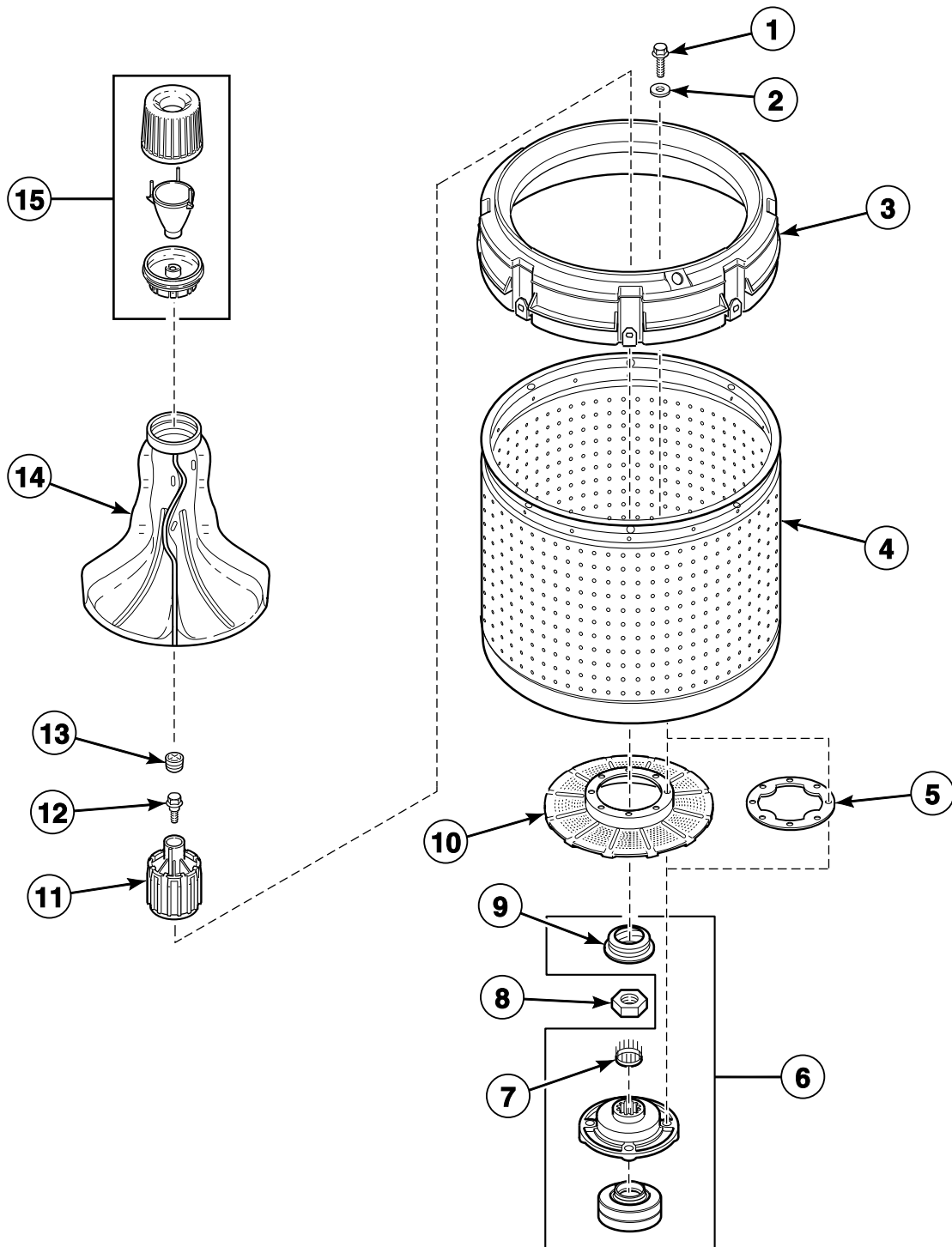
## Agitator, Drive Bell, Hub and Seal Kit and Washtub

REF	PART NO.	DESCRIPTION	COMMENTS
1	33514	Agitator	Models LWS01A*, LWS01A*C, LWS01B*, LWS02A* and LWS02B*
2	33174	Agitator	Models LWS01M* and LWS02M*
	33513	Agitator	Model LWS04M*
3	36515	Agitator Cap	Use with item 2
4	39837	Balance Ring Assembly	White
5	27202	Screw	
6	28094	Washer	Rubber; Use with porcelain washtub
7	39250P	Tub Kit	Blue porcelain; Models LWS02A*, LWS02B* and LWS02M*
	719P3	Washtub Kit	Stainless steel; Model LWS04M*
	39252P	Tub Assembly	Blue porcelain; All other models
8	39122	Washtub Gasket	
9	646P3	Hub and Seal Kit	Includes item 13 and 38359 Tub Cover Gasket
10	29728	Spline Insert	
11	29220	Nut	
12	36425	Bell and Transmission Tube Seal	
13	39508P	Drive Bell and Seal Kit	Replaces 36443P Drive Bell and Seal Kit; Includes items 12, 15 and 16
14	36472	O-Ring	Not needed if using new item 15
15	39432	Screw	
16	36511	Bell Plug	

\* Add Letter To Designate Color. L - Almond Q - Bisque W - White

# Agitator, Fabric Softener Dispenser, Drive Bell, Hub and Lip Seal Kit and Washtub

Models LWN311SP111TW01, LWN311WP111TW01, LWN412SP111TW01, LWS16N\*, LWS17N\*, LWS44N\*, LWS45N\* and LWS49N\*



TLW1466P\_39310

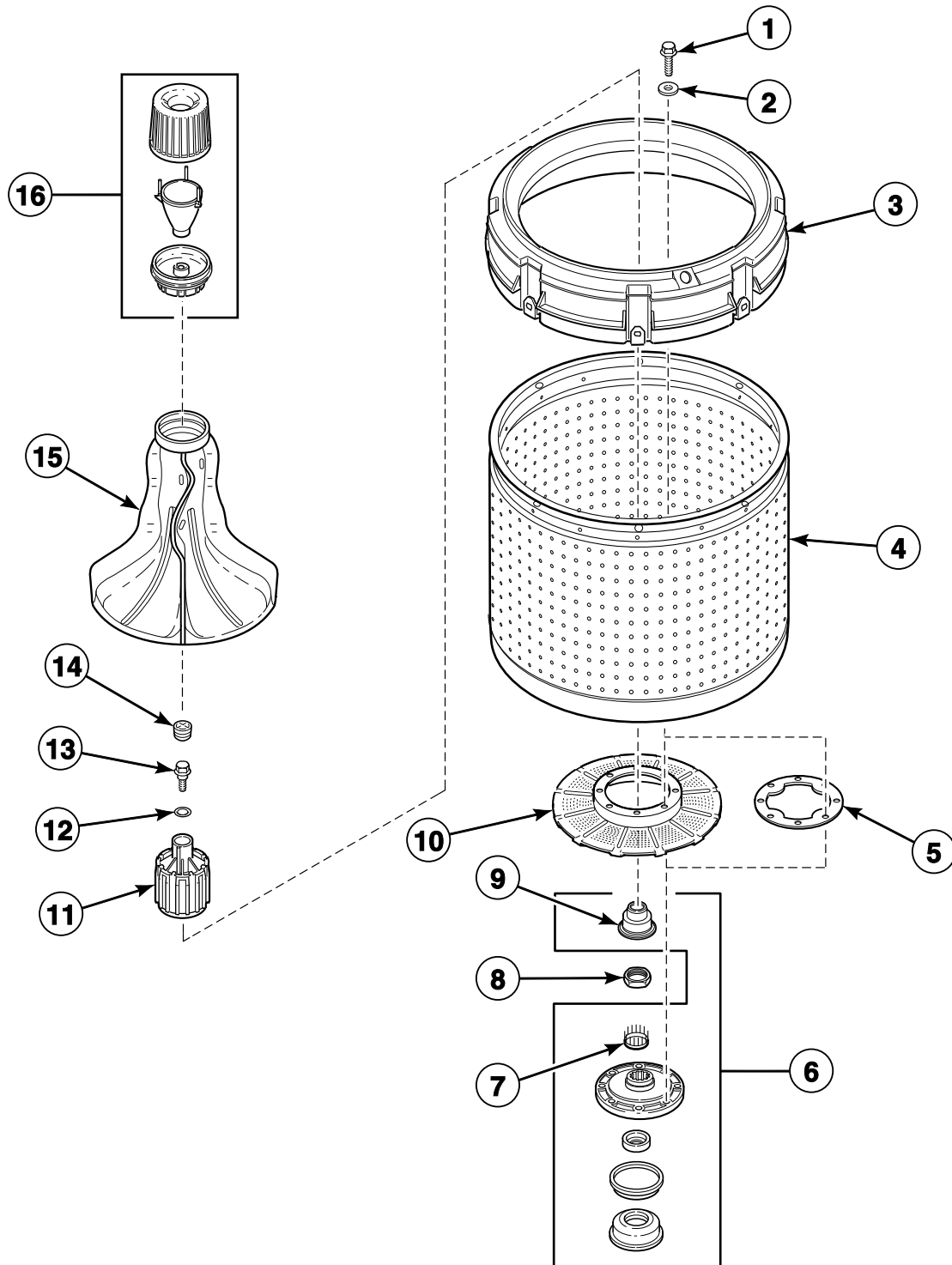
## Agitator, Fabric Softener Dispenser, Drive Bell, Hub and Lip Seal Kit and Washtub

REF	PART NO.	DESCRIPTION	COMMENTS
1	27202	Screw	
2	28094	Washer	Rubber; Use with porcelain washtub
3	39837	Balance Ring Assembly	
4	39240P	Tub Assembly	White porcelain; Models LWN311WP111TW01 and LWS16N*
	719P3	Washtub Kit	Stainless steel; Models LWN311SP111TW01, LWN412SP111TW01, LWS17N*, LWS44N*, LWS45N* and LWS49N*
5	39122	Washtub Gasket	
6	766P3A	Hub and Lip Seal Kit	DO NOT use any sealant other than 200996P Sealant; Includes item 11 and installation tool
	200996P	Sealant	Use with hub and lip seal kit
7	29728	Spline Insert	
8	29220	Nut	
9	36425	Bell and Transmission Tube Seal	
10	39371	Lint Filter	
11	39508P	Drive Bell and Seal Kit	Includes items 9, 12 and 13
12	39432	Screw	
13	36511	Bell Plug	
14	33174	Agitator	
15	36542	Fabric Softener Dispenser Assembly	

\* Add Letter To Designate Color. L - Almond Q - Bisque W - White

# **Agitator, Fabric Softener Dispenser, Drive Bell, Hub and Seal Kit and Washtub**

Models LWS16A\*, LWS16B\*, LWS16M\*, LWS17A\*, LWS17B\*, LWS17M\*, LWS45A\*, LWS45B\* and LWS45M\*



W376P\_39310

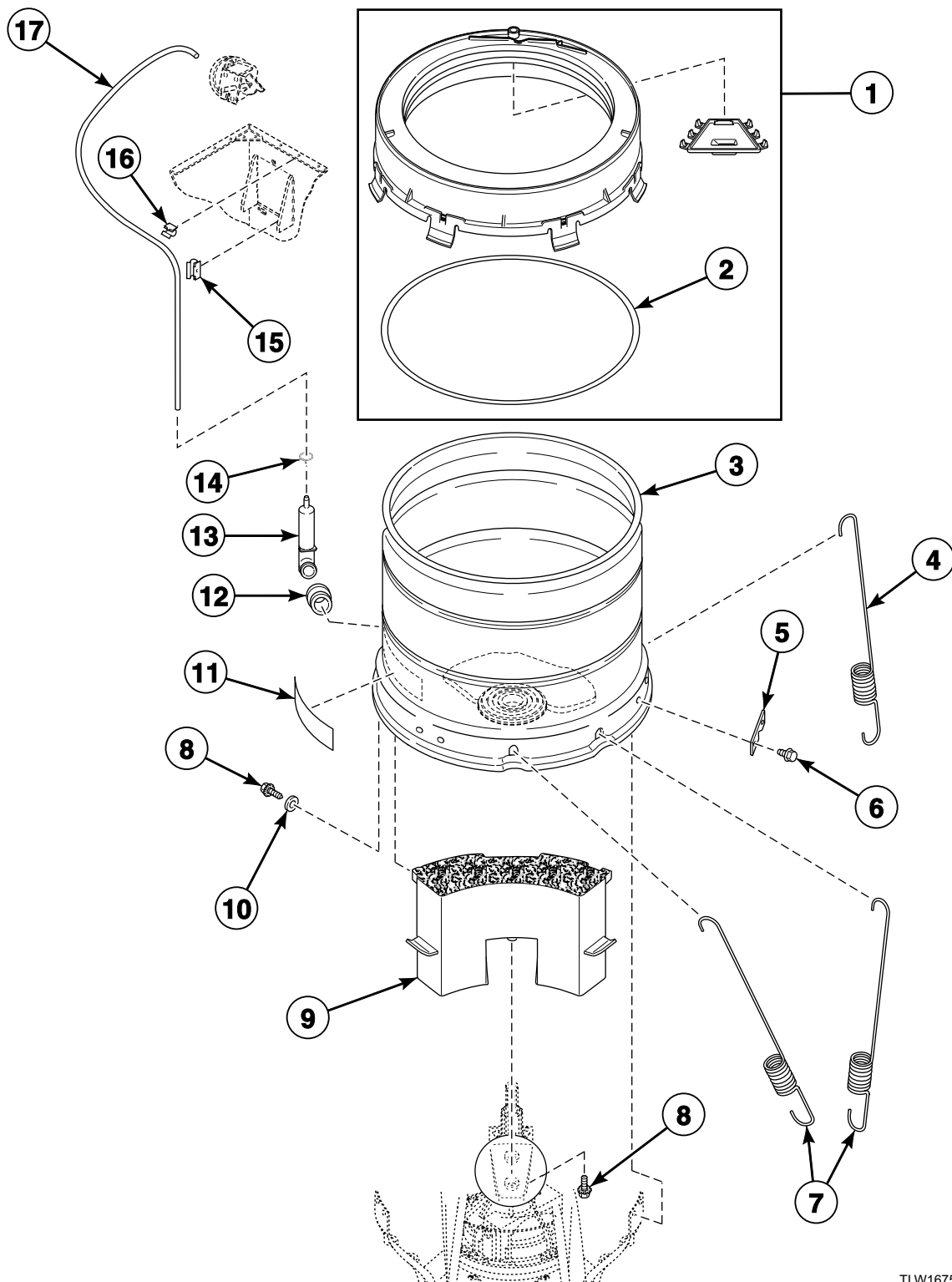
## Agitator, Fabric Softener Dispenser, Drive Bell, Hub and Seal Kit and Washtub

REF	PART NO.	DESCRIPTION	COMMENTS
1	27202	Screw	
2	28094	Washer	Rubber; Use with porcelain washtub
3	39837	Balance Ring Assembly	
4	39240P	Tub Assembly	White porcelain; Models LWS16A*, LWS16B* and LWS16M*
	719P3	Washtub Kit	Stainless steel; All other models
5	39122	Washtub Gasket	
6	646P3	Hub and Seal Kit	Includes 38359 Tub Cover Gasket and item 11
7	29728	Spline Insert	
8	29220	Nut	
9	36425	Bell and Transmission Tube Seal	
10	39371	Lint Filter	
11	39508P	Drive Bell and Seal Kit	Replaces 36443P Drive Bell and Seal Kit; Includes items 9, 13 and 14
12	36472	O-Ring	Not needed if using new item 13
13	39432	Screw	
14	36511	Bell Plug	
15	33174	Agitator	
16	36542	Fabric Softener Dispenser Assembly	

\* Add Letter To Designate Color. L - Almond Q - Bisque W - White

# Outer Tub, Cover, Pressure Hose and Counterweight

Model LWNA11SP111TW01



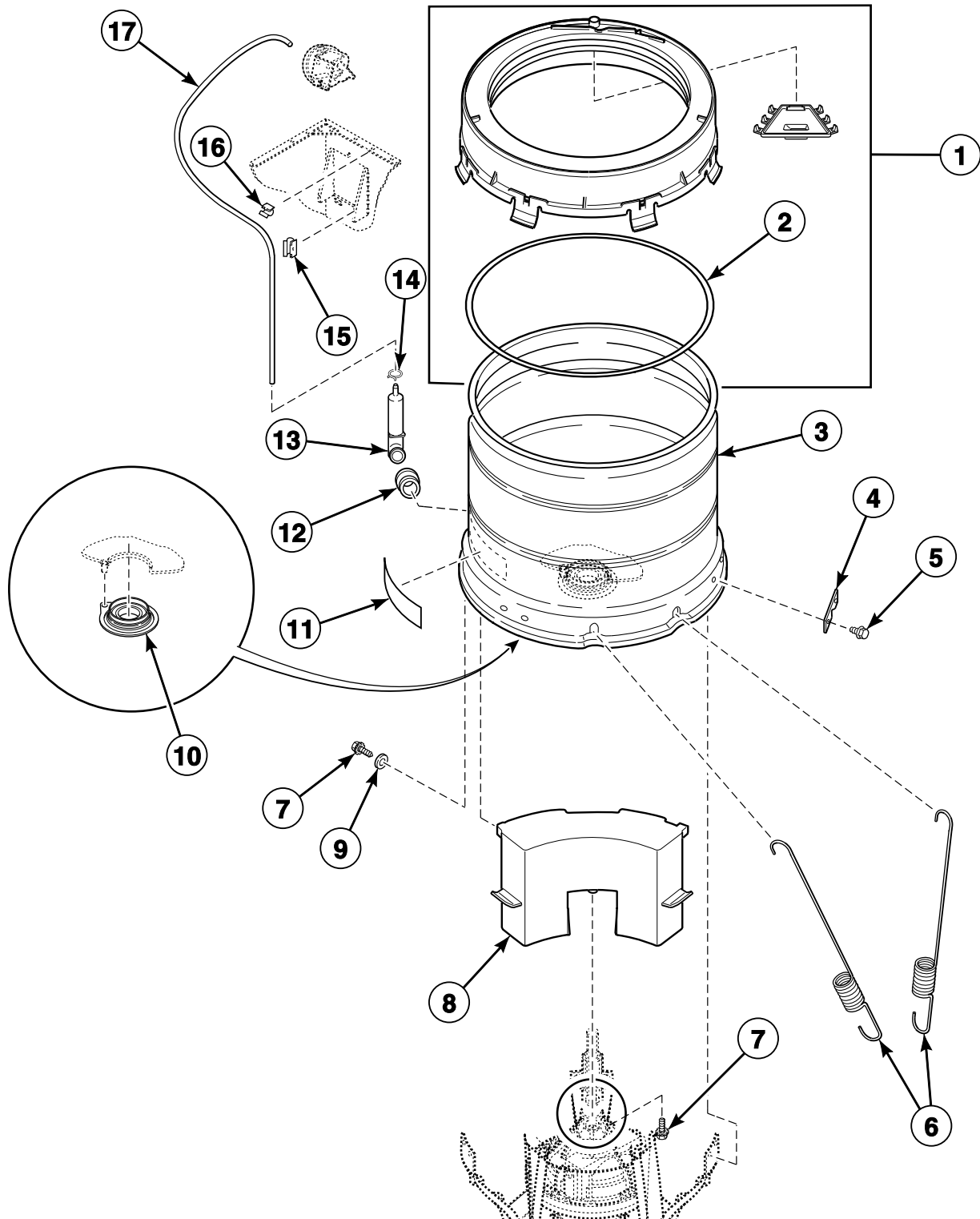
TLW1675P\_39310

## Outer Tub, Cover, Pressure Hose and Counterweight

REF	PART NO.	DESCRIPTION	COMMENTS
1	201430	Tub Cover and Gasket Assembly	Includes item 2
2	38359	Tub Cover Gasket	
3	202363	Tub Assembly	Includes 28944RP Lower Bearing
4	201521	Leg Spring	Use to replace two rear springs (closest to counterweight)
5	27926	Leg Plate	
6	35369	Screw	
7	37575	Leg Spring	
8	39566	Screw	
9	38769	Counterweight Assembly	
10	39249	Washer	
11	500049	Warning Label	
12	29175	Grommet	
13	30907	Pressure Bulb	
14	39282	Hose Clamp	
15	36985	Hose Clip	
16	21036	Cable Clip	
17	202700	Tubing	

# Outer Tub, Cover, Bearing and Seal Housing, Pressure Hose and Counterweight

Models LWNB11SP111TW01, LWNB11SP111TWAA, LWN311PP111TW01, LWN311SP111TW01, LWN311WP111TW01, LWN412SP111TW01, LWS01N\*, LWS02N\*, LWS04N\*, LWS05N\*, LWS16N\*, LWS17N\*, LWS44N\*, LWS45N\* and LWS49N\*



TLW1464P\_39310



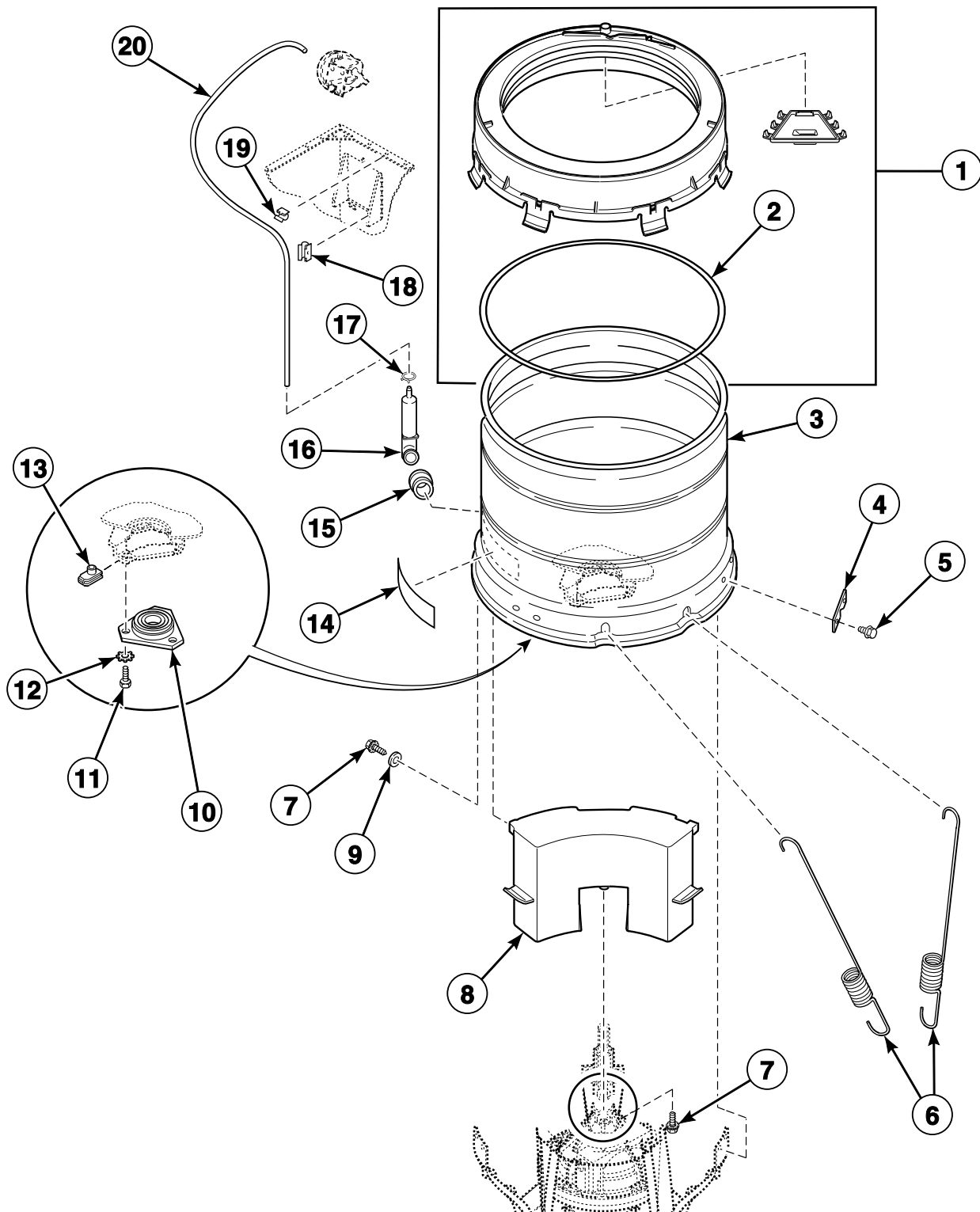
## Outer Tub, Cover, Bearing and Seal Housing, Pressure Hose and Counterweight

REF	PART NO.	DESCRIPTION	COMMENTS
1	39169	Tub Cover Assembly	Includes item 2
2	38359	Tub Cover Gasket	
3	200510P	Outer Tub Assembly	Model LWS01N*
	200511P	Outer Tub Assembly	All other models
4	27926	Leg Plate	
5	35369	Screw	
6	37576	Leg Spring	Model LWS01N*
	37575	Leg Spring	All other models
7	39566	Screw	
8	38769	Counterweight Assembly	
9	39249	Washer	
10	766P3A	Hub and Lip Seal Kit	
	200996P	Sealant	Use with hub and lip seal kit
11	500049	Warning Label	
12	29175	Grommet	
13	30907	Pressure Bulb	
14	39282	Hose Clamp	
15	36985	Hose Clip	
16	21036	Cable Clip	
17	202700	Tubing	

\* Add Letter To Designate Color. L - Almond Q - Bisque W - White

# Outer Tub, Cover, Bearing Housing, Pressure Hose and Counterweight

All Models Except LWNA11SP111TW01, LWNB11SP111TW01, LWNB11SP111TWAA, LWN311PP111TW01, LWN311SP111TW01, LWN311WP111TW01, LWN412SP111TW01, LWS01N\*, LWS02N\*, LWS04N\*, LWS05N\*, LWS16N\*, LWS17N\*, LWS44N\*, LWS45N\* and LWS49N\*



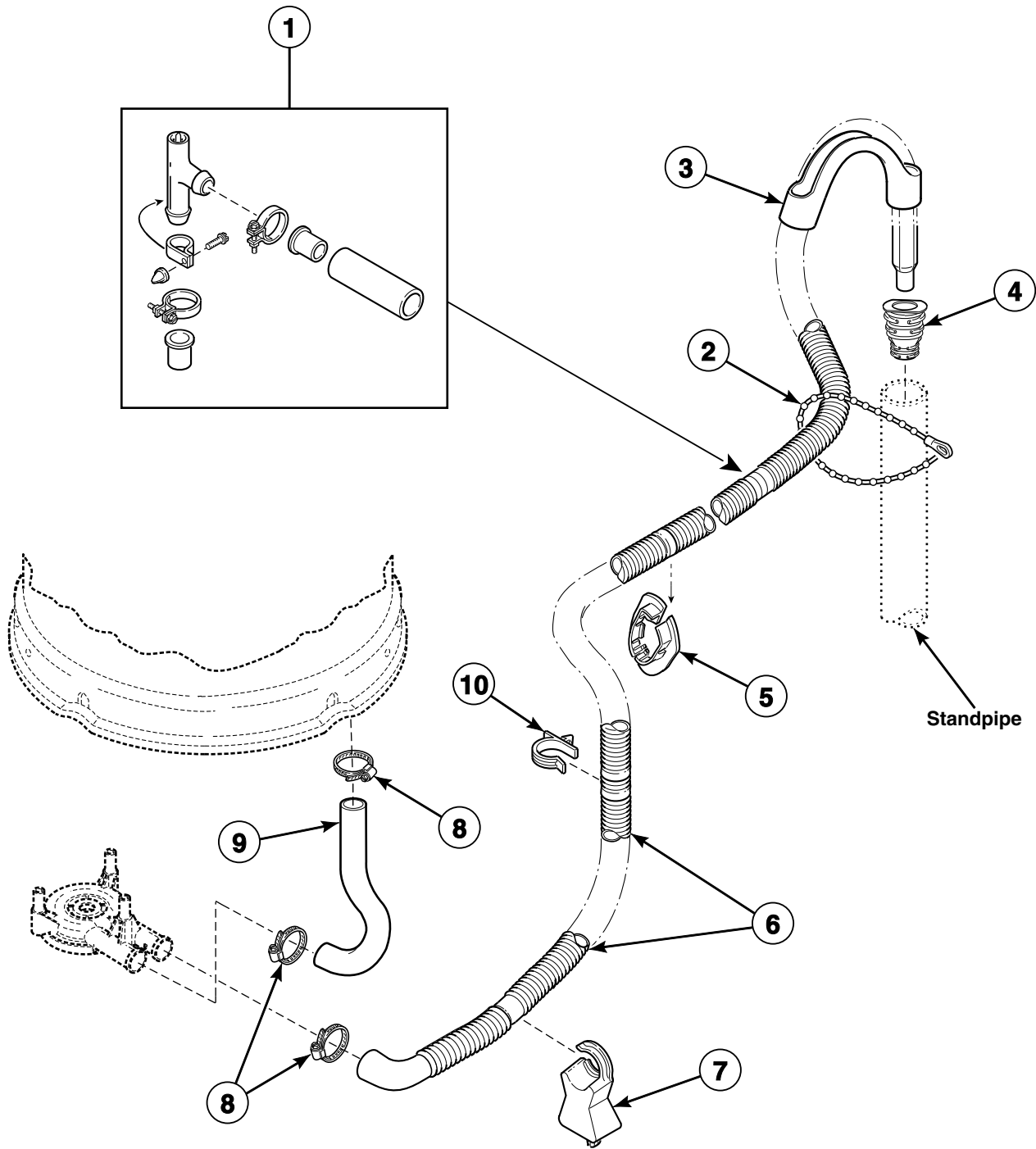
TLW1624P\_39310

## Outer Tub, Cover, Bearing Housing, Pressure Hose and Counterweight

REF	PART NO.	DESCRIPTION	COMMENTS
1	39169	Tub Cover Assembly	Includes item 2
2	38359	Tub Cover Gasket	
3	37981P	Outer Tub Kit	Models LWS01A*, LWS01A*C, LWS01B* and LWS01M*
	37813P	Outer Tub	All other models
4	27926	Leg Plate	
5	35369	Screw	
6	37576	Leg Spring	Models LWS01A*, LWS01A*C, LWS01B* and LWS01M*
	37575	Leg Spring	All other models
7	39566	Screw	
8	38769	Counterweight Assembly	
9	39249	Washer	
10	27182	Bearing Housing Assembly	
11	M400057	Screw	
12	202010	Washer	
13	27222	Nut	
14	500049	Warning Label	
15	29175	Grommet	
16	30907	Pressure Bulb	
17	39282	Hose Clamp	
18	36985	Hose Clip	
19	21036	Cable Clip	
20	202700	Tubing	

\* Add Letter To Designate Color. L - Almond Q - Bisque W - White

## Drain Hose and Siphon Break Kit



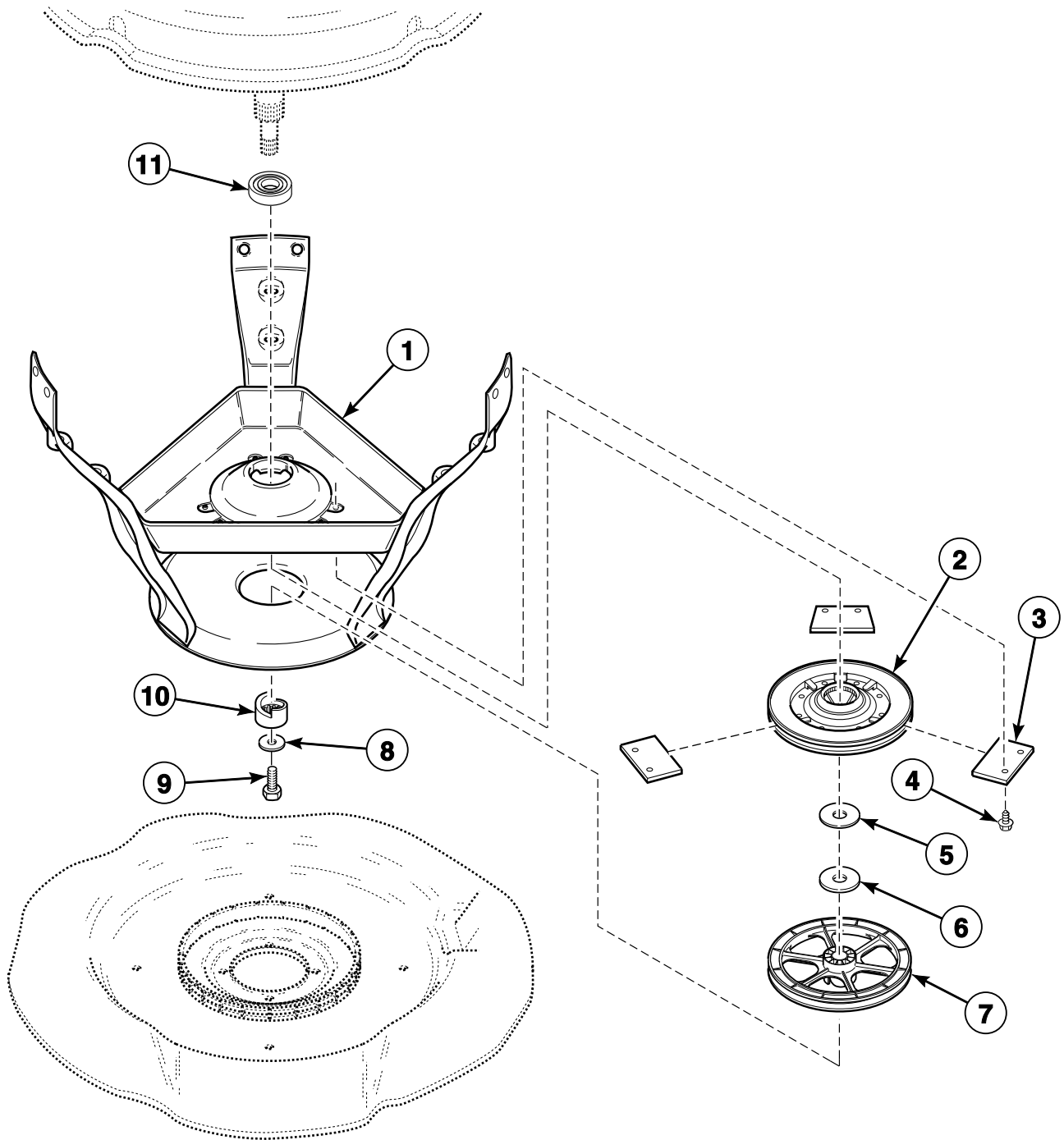
W329P\_39310

## Drain Hose and Siphon Break Kit

REF	PART NO.	DESCRIPTION	COMMENTS
	451P3	Drain Extension Kit	Use with 20616 Drain Hose; Order by the foot as required
<b>1</b>	562P3	Siphon Break Kit	Siphon break kit MUST be installed in drain hose if drain receptacle is lower than cabinet top of washer
<b>2</b>	33489	Standpipe Strap	
<b>3</b>	33615	Drain Hose Sleeve	
<b>4</b>	36878	Standpipe Adapter	Models LWN311SP111TW01, LWN311WP111TW01, LWN412SP111TW01, LWS16A*, LWS16M*, LWS16N*, LWS17A*, LWS17M*, LWS17N*, LWS44N*, LWS45M*, LWS45N* and LWS49N*
<b>5</b>	32219	Strain Relief	
<b>6</b>	39893	Drain Hose	
<b>7</b>	38732	Hose Stand	
<b>8</b>	F200204	Hose Clamp	
<b>9</b>	38351	Tub-to-Pump Hose	
<b>10</b>	36014	Retainer Clip	

\* Add Letter To Designate Color. L - Almond Q - Bisque W - White

## Weldment and Bearing Assembly, Brake and Pulley



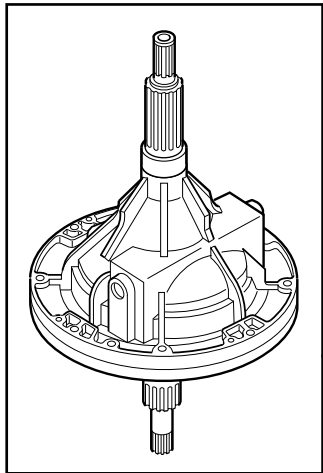
W333P\_39310

## Weldment and Bearing Assembly, Brake and Pulley

REF	PART NO.	DESCRIPTION	COMMENTS
1	39254	Weldment and Bearing Assembly	Models LWS01A*, LWS01A*C, LWS01B*, LWS01M* and LWS01N*
	39253	Weldment and Bearing Assembly	All other models
2	38505P	Brake Kit	
3	735P3	Brake Pad Kit	Includes 3 pads and 6 of item 4
	26594P	Silicone Grease	Apply small amount to each new brake pad
4	39739	Screw	
5	35535	Washer	Thin
6	27015	Washer	Thick
7	38007	Pulley Assembly	Models LWS01A*, LWS01A*C, LWS01B*, LWS02A*, LWS02B*, LWS16A*, LWS16B*, LWS17A*, LWS17B*, LWS45A* and LWS45B*
	202795	Pulley	All other models
8	26509	Washer	
9	27220	Screw	
10	38008	Helix	
11	28944RP	Lower Bearing	

\* Add Letter To Designate Color. L - Almond Q - Bisque W - White

# Transmission Assembly



TLW1571K\_39310

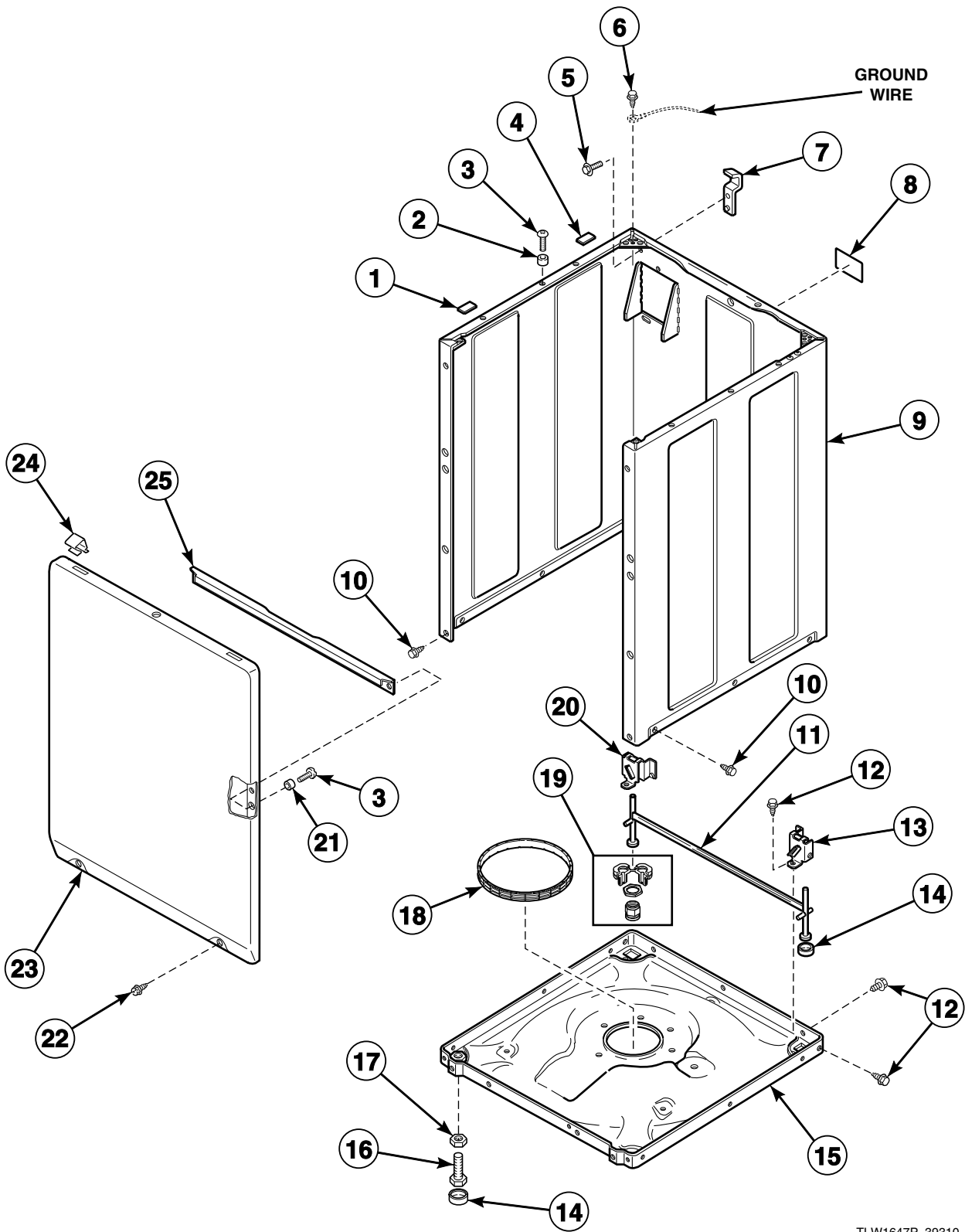


# Transmission Assembly

REF	PART NO.	DESCRIPTION	COMMENTS
	27604P	Anti-Seize Compound	Apply to smooth area of both the upper and lower transmission tube that will be contacting the upper and lower bearings and apply to spline area of upper and lower transmission tube that will be contacting the washtub
	37577P	Transmission Sealant	Use between transmission case and cover
1	36570P	Output Shaft	
2	201212	Hub Spacer	Models LWNA11SP111TW01, LWNB11SP111TW01, LWNB11SP111TWAA, LWN311PP111TW01, LWN311SP111TW01, LWN311WP111TW01, LWN412SP111TW01, LWS01N*, LWS02N*, LWS04N*, LWS05N*, LWS16N*, LWS17N*, LWS44N*, LWS45N* and LWS49N*; Included in 766P3A Hub and Lip Seal Kit
3	RB150004	Transmission Rebuild Kit	Includes items 4, 18 and 37577P Transmission Sealant
4	27243P	Transmission Oil	1 fill
5	26577	Gear and Stud Assembly	
6	201773	Screw	
7	21456	Washer	Models through Serial No. 9712011370
8	26509	Washer	
9	37406P	Drive Pinion	Use with 38826P Transmission Assembly
	37405	Drive Pinion	Use with 38165P Transmission Assembly
10	38268P	Input Shaft	
11	32814	Screw	
12	38165P	Transmission Assembly	
13	37471	Transmission Cover Assembly	
14	37403P	Reduction Gear	Use with 38826P Transmission Assembly
	37404P	Reduction Gear	Use with 38165P Transmission Assembly
15	29260	Washer	
16	29273	Screw	
17	26493	Slide	
18	201664	Rack	
19	27197	Retaining Ring	
20	27003	Agitator Pinion	
21	35092	Washer	
22	38864	Gear Sleeve	
23	33223P	Transmission Case Assembly	

\* Add Letter To Designate Color. L - Almond Q - Bisque W - White

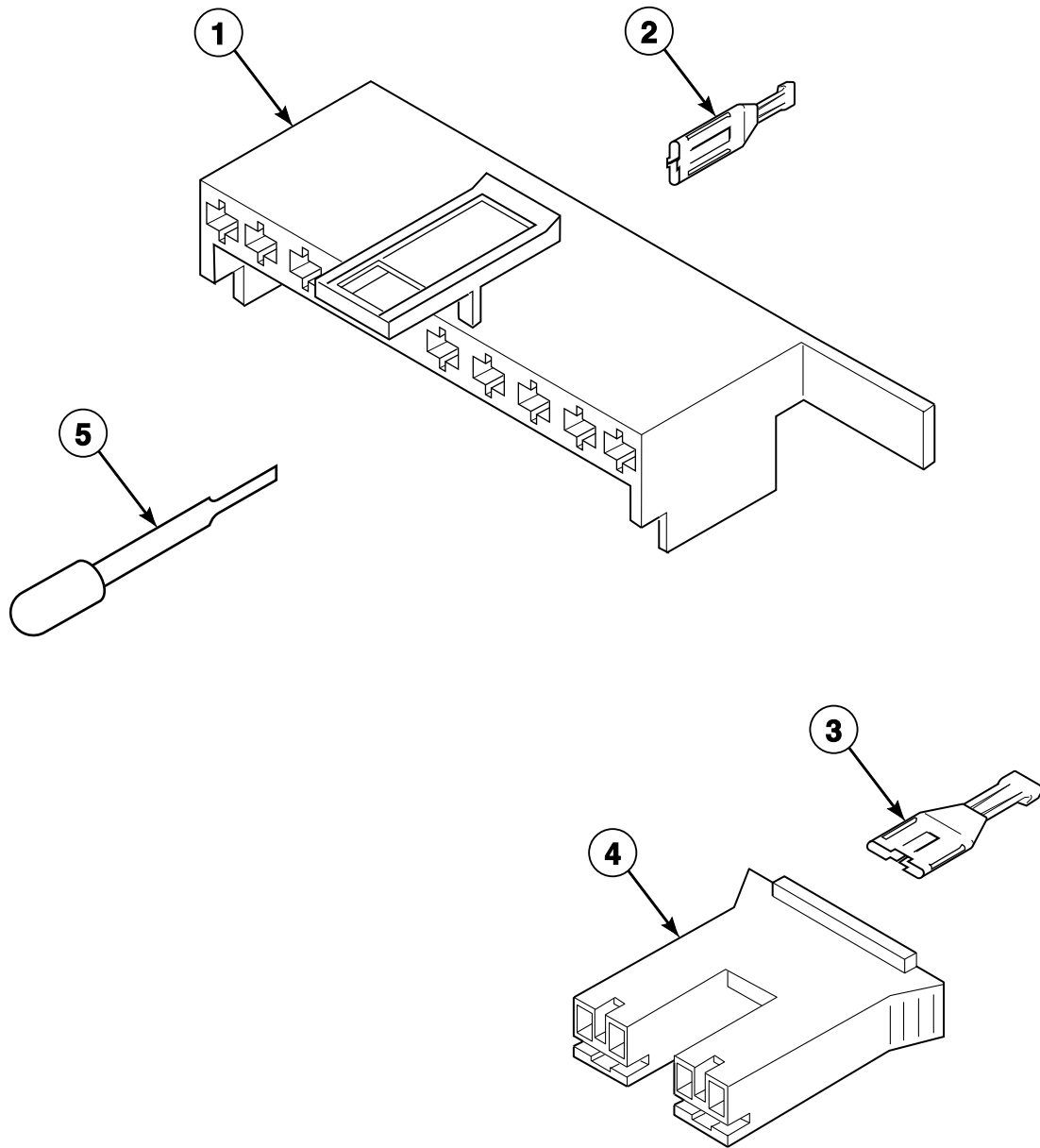
# Front Panel, Base Assembly and Cabinet Kit



## Front Panel, Base Assembly and Cabinet Kit

REF	PART NO.	DESCRIPTION	COMMENTS
	122P4P	Porcelain Touch-Up Paint	White
	370P4P	Porcelain Touch-Up Paint	Bisque
	215P4P	Porcelain Touch-Up Paint	Almond
1	56128	Bumper Pad	
2	56079	Panel Locator	
3	39733	Screw	
4	36226	Bumper Pad	
5	51780	Screw	
6	52909	Screw	
7	27103	Hold-Down Lug Hinge	
8	803260	Warning Label	
9	38612WP	Service Cabinet Kit	White
	38612LP	Service Cabinet Kit	Almond
	38612QP	Service Cabinet Kit	Bisque
10	27196	Screw	
11	34443	Leg and Stabilizer Assembly	
12	35148	Screw	
13	36036	Bracket	Right
14	34318	Rubber Foot	
15	39788	Base Assembly	
16	34319	Leveling Leg	
17	21899	Nut	
18	37937	Friction Ring	
19	566P3	Adjustable Leg Extension Kit	
20	36037	Bracket	Left
21	28102	Panel Locator	
22	38272	Screw	
23	38335WP	Front Panel	White
	38335LP	Front Panel	Almond
	38335QP	Front Panel	Bisque
24	35865	Hold-Down Clip	New style panel attachment
25	35097	Front Panel Brace	

# Mixing Valve and Motor Connection Blocks, Terminals and Extractor Tool

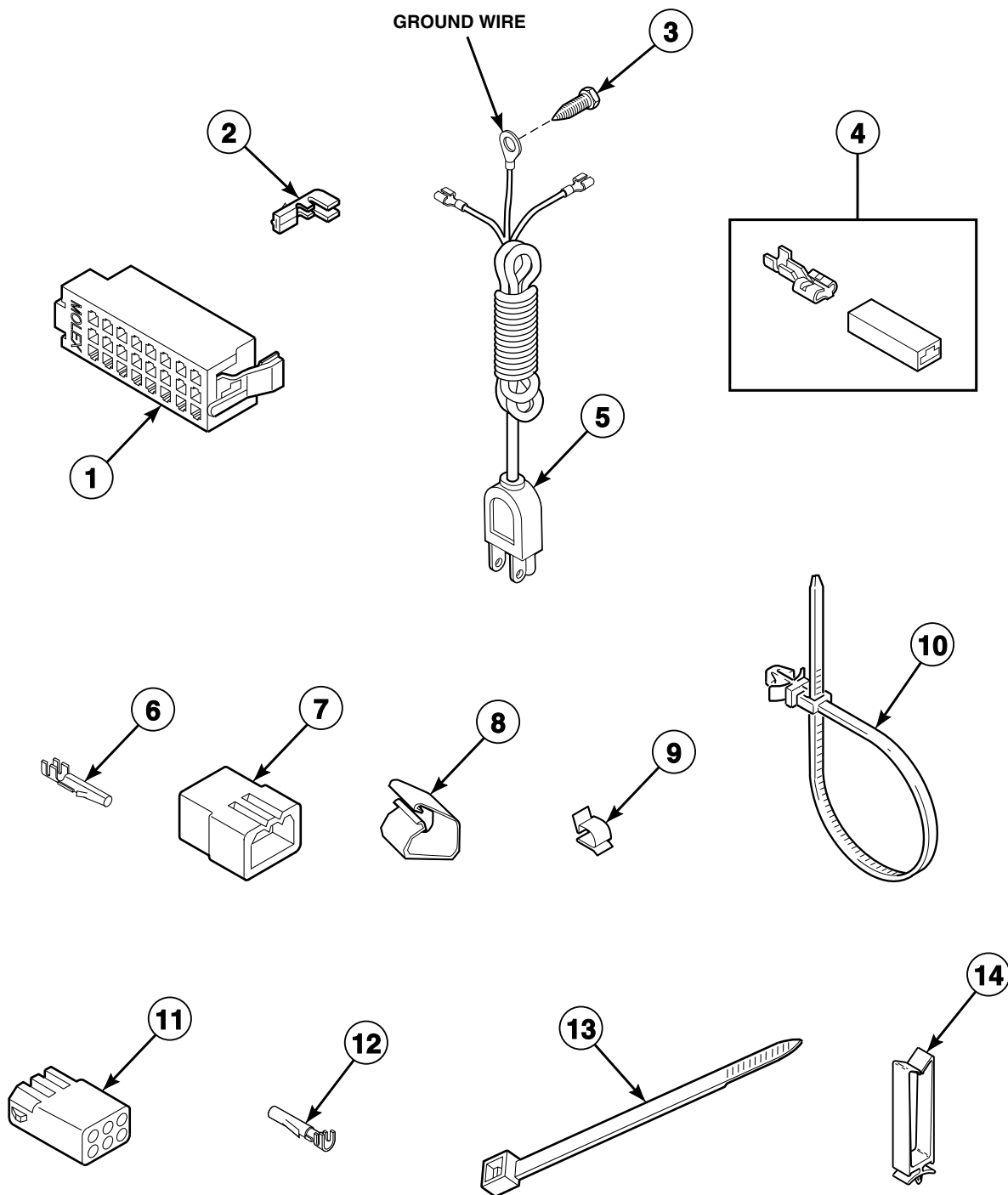


W134PZ3A\_39310

## Mixing Valve and Motor Connection Blocks, Terminals and Extractor Tool

REF	PART NO.	DESCRIPTION	COMMENTS
1	34677	10 Circuit Plug	Motor
2	00188	Female Terminal	For 1 or 2 wire application
3	00121	Female Spade Terminal	1/4 inch
4	34675	Mixing Valve Plug	Natural
	34676	Mixing Valve Plug	Red
5	283P4	Terminal Extractor Tool	

## Lead-In Cord and Terminals



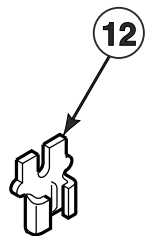
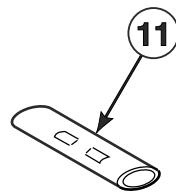
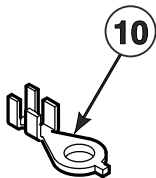
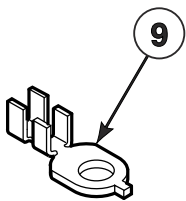
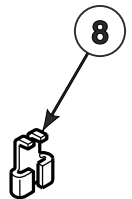
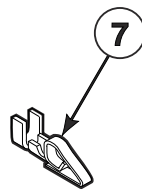
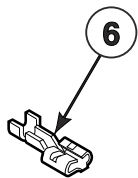
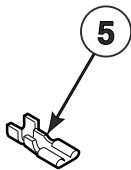
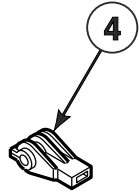
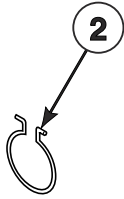
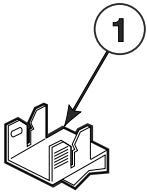
TLW1676P\_39310

## Lead-In Cord and Terminals

REF	PART NO.	DESCRIPTION	COMMENTS
1	32746	24 Position Housing	Right; Black
	34123	24 Position Housing	Left; White
2	00188	Female Terminal	For 1 or 2 wire application
3	52909	Screw	
4	00359	Insulated Female Spade Terminal	
5	34458	Lead-In Cord	
6	00116	Male Pin Terminal	
7	23033	9 Circuit Plug	
	23041	6 Circuit Plug	
	26302	1 Circuit Plug	
8	N/A	Harness Clip	
9	21036	Cable Clip	
10	70335601	Cable Tie	Model LWNA11SP111TW01
11	26163	9 Circuit Receptacle	
	26301	1 Circuit Receptacle	
	26708	6 Circuit Receptacle	
12	00117	Female Pin Terminal	
13	55881	Harness Strap	
14	36274	Wire Clip	

N/A = Part no longer available

# Terminals



W248PZ3A\_39310

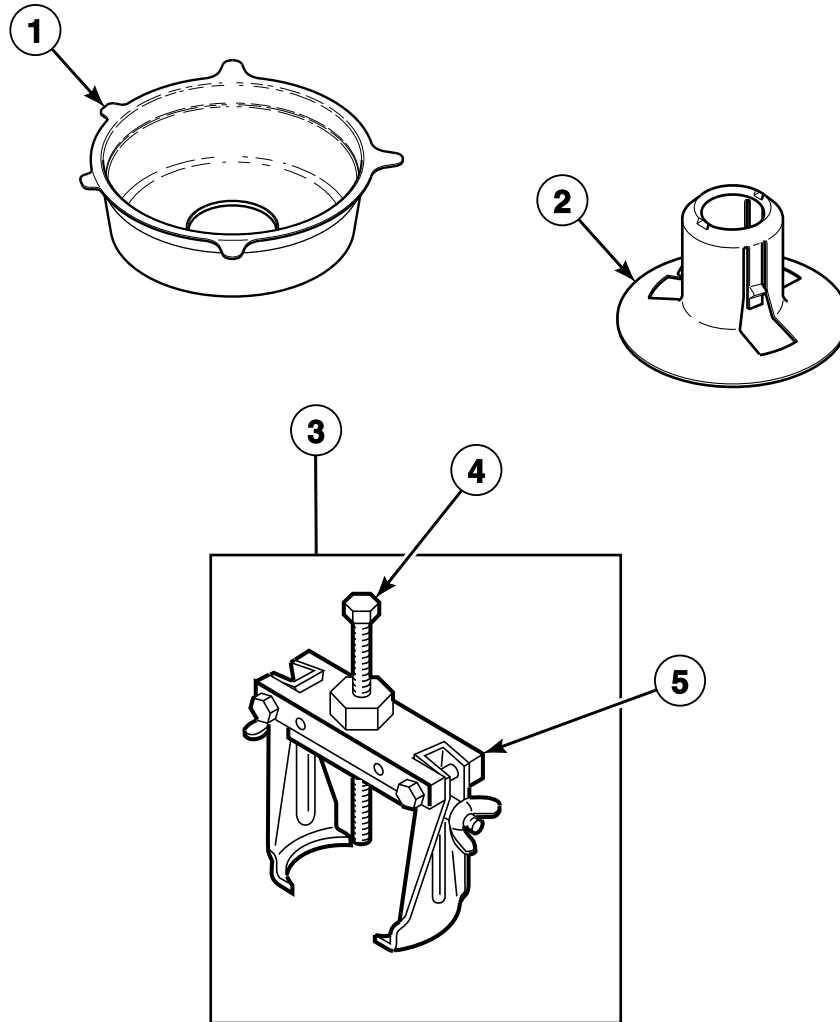


# Terminals

REF	PART NO.	DESCRIPTION	COMMENTS
1	00161	Grounding Clip	
2	51291	Wire Clip	
3	687500	Wire Clip	
4	70210	Insulator	
5	00112	Female Spade Terminal	Small spade
6	00223	Female Spade Terminal	Large spade
7	N/A	Female Spade Terminal	1/4 inch
8	00120	Female Flag Terminal	
9	N/A	Ring Terminal	1/4 inch
10	00110	Ring Terminal	Small shank
11	21091	Connector	(2) 1/4 inch male spades
12	F140562	Connector	

N/A = Part no longer available

## Shipping Materials and Special Tools

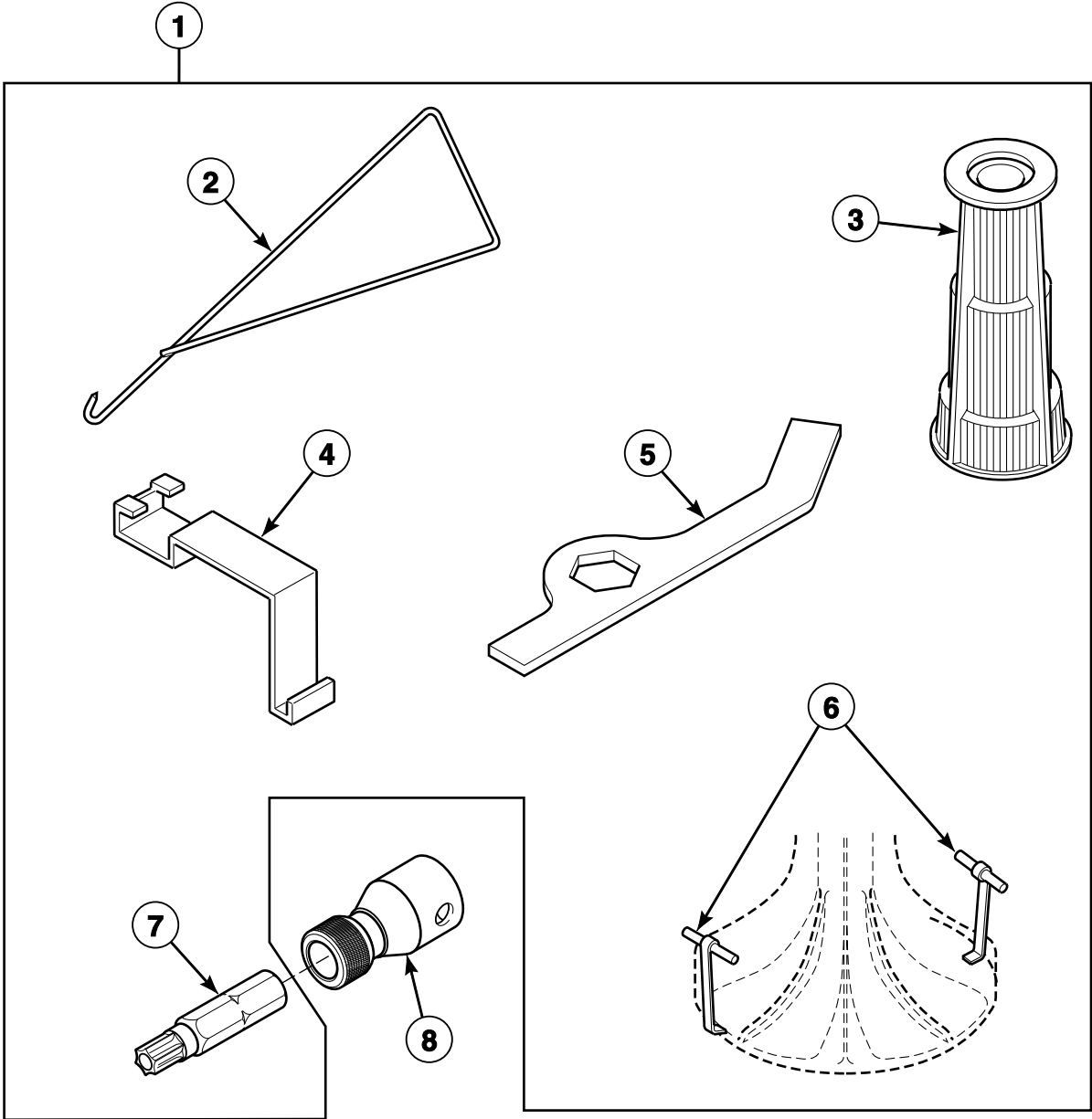


TLW1678P\_39310

## Shipping Materials and Special Tools

REF	PART NO.	DESCRIPTION	COMMENTS
1	200552	Shipping Brace	Model LWNA11SP111TW01; Install whenever moving washer; Remove before use
	200553	Shipping Brace	All other models; Install whenever moving washer; Remove before use
2	38149	Shipping Plug	Install before moving washer to prevent tub from damaging cabinet
3	294P4	Agitator Drive Bell Puller	For removal and installation of drive bell to transmission shaft
4	294P4B	Bolt	Use to update item 3
5	294P4A	Drive Bell Puller Arm	Use to update item 3

Special Tools

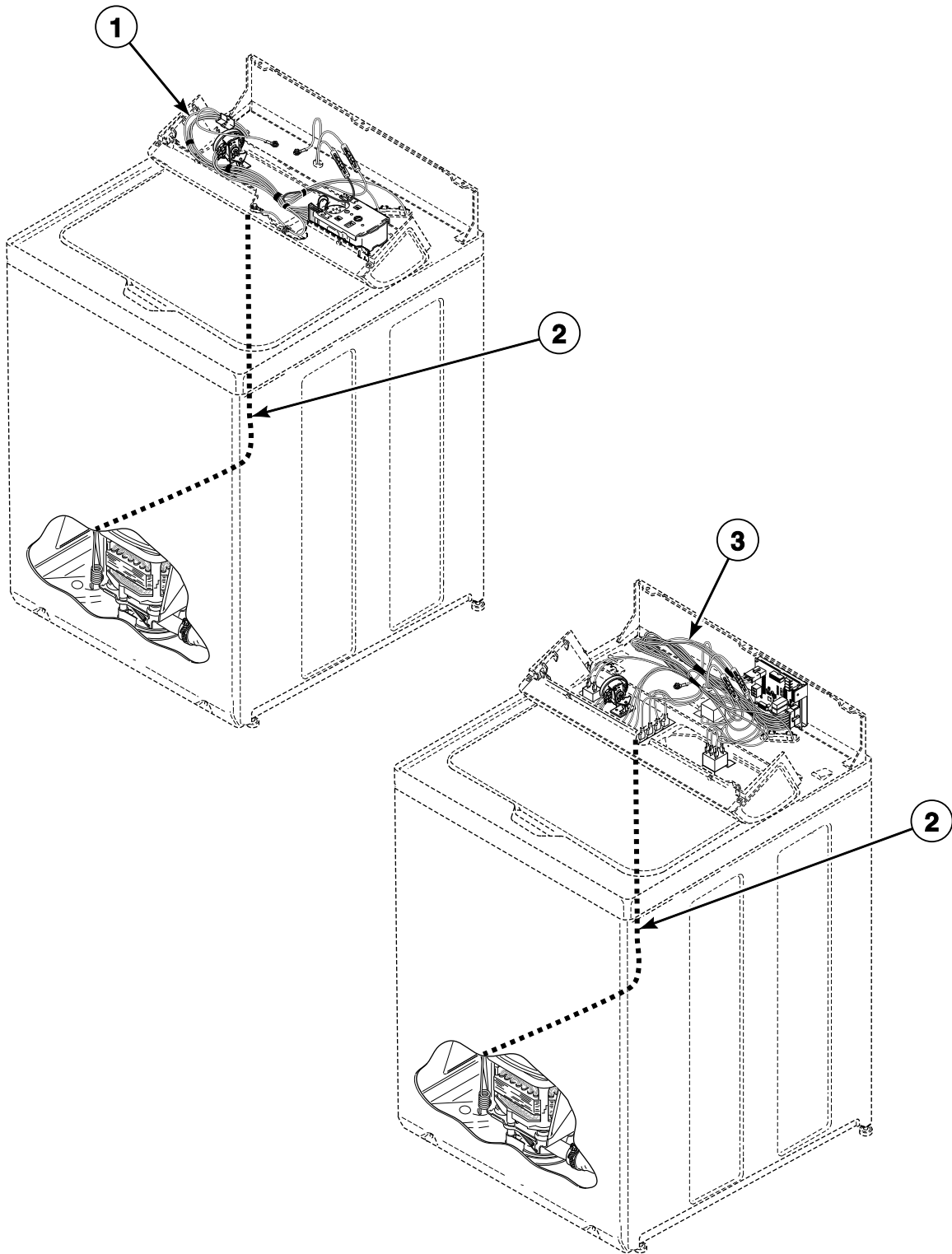


TLW1649P\_39310

## Special Tools

REF	PART NO.	DESCRIPTION	COMMENTS
1	725P3	Tool Kit	Includes items 2-7
2	321P4	Spring Hook Tool	For removal of module springs from outer tub
3	293P4	Drive Bell Seal Tool	For installation of 36425 Bell and Transmission Tube Seal
4	273P4	Tub Cover Removal Tool	Use to install 38359 Tub Cover Gasket in outer tub cover
5	306P4	Hex Wrench Tool	For removal of locknut from washtub hub
6	254P4P	Agitator Hook	Set of 2; Use to remove agitator from drive bell
7	282P4	Torx Bit	T25; For removal and installation of pump attaching screws
8	24161	Bit Holder	3/8 inch drive

# Wire Harnesses and Wires



TLW1677P\_39310

## Wire Harnesses and Wires

REF	PART NO.	DESCRIPTION	COMMENTS
	45001	18 Gauge Wire	Black; Order wire by foot and terminals as required
	45380	12 Gauge Wire	Orange; Order wire by foot and terminals as required
<b>1</b>	201288P	Hood Harness Assembly	Models LWNB11SP111TW01, LWNB11SP111TWAA and LWS05N*
	201317	Harness Assembly	Model LWS49N*
	39499P	Hood Harness Assembly	Models LWS45A*, LWS45B*, LWS45M* and LWS45N*
	38651	Hood Wire Harness Assembly	Models LWN412SP111TW01 and LWS44N*
	38657P	Hood Wire Harness Assembly	All other models except LWNA11SP111TW01
<b>2</b>	201328P	Base Harness Assembly	Models LWNB11SP111TW01, LWNB11SP111TWAA, LWS05N* and LWS49N*
	38660P	Base Wire Harness Assembly	Models LWS45A*, LWS45B*, LWS45M* and LWS45N*; Model LWS44N* through Serial Nos. beginning 0903
	38661P	Wire Harness Assembly	Base; Models LWNA11SP111TW01 and LWN412SP111TW01; Model LWS44N* starting Serial Nos. beginning 0904
	38772P	Base Wire Harness Assembly	All other models
<b>3</b>	202338	Hood Harness	Model LWNA11SP111TW01

\* Add Letter To Designate Color. L - Almond Q - Bisque W - White

**NOTE:** Individual wires are not available separately. Order complete wire harness, or order wire by the foot. When applying terminals to wires, it is recommended that the terminals be soldered to the wires.

## This image shows a full page of blank, lined paper. It features approximately 20 evenly spaced horizontal black lines across its entire width, typical of notebook or legal stationery. The margins are consistent on all sides, and there are no markings, text, or illustrations present on the page.



# Parts Index

## A

Adjustable Leg Extension Kit	
566P3 .....	41
Agitate and Spin Belt	
200923 .....	19
37820 .....	19
38174 .....	19
Agitator	
33174 .....	21, 23, 25, 27
33513 .....	21, 23
33514 .....	23
Agitator Cap	
36515 .....	21, 23
Agitator Drive Bell Puller	
294P4 .....	49
Agitator Hook	
254P4P .....	51
Agitator Pinion	
27003 .....	39
Anti-Seize Compound	
27604P .....	39

## B

Backflow Preventer	
34500 .....	15, 17
Balance Ring Assembly	
39836 .....	21
39837 .....	21, 23, 25, 27
Base Assembly	
39788 .....	41
Base Harness Assembly	
201328P .....	53
Base Wire Harness Assembly	
38660P .....	53
38772P .....	53
Bearing Housing Assembly	
27182 .....	33
Bell and Transmission Tube Seal	
36425 .....	21, 23, 25, 27
Bell Plug	
36511 .....	21, 23, 25, 27
Belt and Pump Kit	
RB150002 .....	19
RB150003 .....	19
Bit Holder	
24161 .....	51
Bleach Dispenser	
38382 .....	13
Bolt	
294P4B .....	49
Bracket	
36036 .....	41
36037 .....	41
Brake Kit	
38505P .....	37
Brake Pad Kit	
735P3 .....	37

Bumper	
21685 .....	13
Bumper Pad	
36226 .....	41
56128 .....	41
Bushing	
33446 .....	13

## C

Cable Clip	
21036 .....	29, 31, 33, 45
Cable Tie	
70335601 .....	45
Cap	
24145 .....	15, 17
Capacitor	
37377 .....	19
Capacitor Clamp	
37535 .....	19
Connector	
F140562 .....	47
21091 .....	47
Control Assembly	
202320 .....	7
Control Panel	
202236W .....	5
202237W .....	5
Control Support Panel	
38171 .....	5, 7, 9
Counterweight Assembly	
38769 .....	29, 31, 33
Cycle Switch	
801240 .....	7
Cycle Switch Bracket	
801390 .....	7

## D

Drain Extension Kit	
451P3 .....	35
Drain Hose	
39893 .....	35
Drain Hose Sleeve	
33615 .....	35
Drive Bell and Seal Kit	
39508P .....	21, 23, 25, 27
Drive Bell Puller Arm	
294P4A .....	49
Drive Bell Seal Tool	
293P4 .....	51
Drive Pinion	
37405 .....	39
37406P .....	39

N/A items do not appear in index.

---

## E

End Panel	
504008L .....	5, 9
504008QP .....	5, 9
504008WP .....	5, 7, 9
504009QP .....	5, 9
504009WP .....	5, 7, 9

---

## F

Fabric Softener Dispenser Assembly	
36542 .....	25, 27
Female Flag Terminal	
00120 .....	47
Female Pin Terminal	
00117 .....	45
Female Spade Terminal	
00112 .....	47
00121 .....	43
00223 .....	47
Female Terminal	
00188 .....	43, 45
Fill Hose	
20617 .....	15, 17
20618 .....	15, 17
Friction Ring	
37937 .....	41
Front Panel	
38335LP .....	41
38335QP .....	41
38335WP .....	41
Front Panel Brace	
35097 .....	41

---

## G

Gear and Stud Assembly	
26577 .....	39
Gear Sleeve	
38864 .....	39
Graphic Panel	
200954W .....	5
201324W .....	9
201326W .....	9
201841W .....	5
202324W .....	7
38887Q .....	5
38887W .....	5
39478W .....	5
Grommet	
29175 .....	29, 31, 33
Grounding Clip	
00161 .....	5, 9, 47

---

## H

Harness Assembly	
201317 .....	53

Harness Strap	
55881 .....	45
Helix	
38008 .....	37
Hex Wrench Tool	
306P4 .....	51
Hinge Stop Clip	
36519 .....	13
Hold-Down Clip	
35358 .....	5, 7, 9, 13
35865 .....	41
38271 .....	13
Hold-Down Lug Hinge	
27103 .....	41
Hood Back Panel	
37782 .....	13
Hood Harness	
202338 .....	53
Hood Harness Assembly	
201288P .....	53
39499P .....	53
Hood Wire Harness Assembly	
38651 .....	53
38657P .....	53
Hose Clamp	
F200204 .....	35
36801 .....	15, 17
39282 .....	29, 31, 33
800803 .....	15, 17
Hose Clip	
36985 .....	29, 31, 33
Hose Stand	
38732 .....	35
Housing, 24 Position	
32746 .....	45
34123 .....	45
Hub and Lip Seal Kit	
766P3A .....	21, 25, 31
Hub and Seal Kit	
646P3 .....	23, 27
Hub Spacer	
201212 .....	39

---

## I

Idler Lever	
38011 .....	19
Idler Lever Kit	
959P3 .....	19
Idler Lever Spring	
200658 .....	19
201189 .....	19
202032 .....	19
39666 .....	19
Idler Pulley	
38225P .....	19
Idler Shaft	
210186 .....	19
Indicator Light	
801356 .....	7
Indicator Light Lens	
801435 .....	7

Input Shaft	
38268P .....	39
Insulated Female Spade Terminal	
00359 .....	45
Insulator	
70210 .....	47
Isolator Post	
38325 .....	19

## K

Knob Assembly	
33688 .....	5
36701L .....	5, 9
36701Q .....	5, 9
36701W .....	5, 7, 9

## L

Lead-In Cord	
34458 .....	45
Leg and Stabilizer Assembly	
34443 .....	41
Leg Plate	
27926 .....	29, 31, 33
Leg Spring	
201521 .....	29
37575 .....	29, 31, 33
37576 .....	31, 33
Leveling Leg	
34319 .....	41
Lid	
201502QP .....	13
201502WP .....	13
202325WP .....	13
Lid Hinge	
36437 .....	13
36513 .....	13
Lid Switch Assembly	
37631 .....	11
Lint Filter	
39371 .....	25, 27
Lower Bearing	
28944RP .....	37

## M

Male Pin Terminal	
00116 .....	45
Mixing Valve	
201304P .....	15
201402P .....	17
201468P .....	17
38495P .....	17
Mixing Valve Bracket	
201303 .....	15
Mixing Valve Kit	
RB150001 .....	17
Mixing Valve Mounting Bracket	
39407 .....	17

Mixing Valve Plug	
34675 .....	43
34676 .....	43
Mixing Valve Screen	
24122 .....	15, 17
Mixing Valve-to-Tub Cover Hose	
201302P .....	15
38155 .....	17
Motor Assembly	
202322P .....	19
Motor Kit	
201615P .....	19
38034P .....	19
38036P .....	19
Motor Mount	
38395 .....	19
38396 .....	19
Motor Mount Bracket	
200941 .....	19
Motor Shield	
34754 .....	19

## N

Nut	
M400981 .....	11
21899 .....	41
27222 .....	33
28803 .....	19
29220 .....	21, 23, 25, 27
52566 .....	19
685846 .....	19

## O

Orifice	
202247 .....	15
O-Ring	
36472 .....	23, 27
Outer Tub	
37813P .....	33
Outer Tub Assembly	
200510P .....	31
200511P .....	31
Outer Tub Kit	
37981P .....	33
Output Shaft	
36570P .....	39

## P

Panel Locator	
28102 .....	41
56079 .....	41
Plug, 1 Circuit	
26302 .....	45
Plug, 10 Circuit	
34677 .....	43
Plug, 6 Circuit	
23041 .....	45

N/A items do not appear in index.

Plug, 9 Circuit	
23033 .....	45
Porcelain Touch-Up Paint	
122P4P .....	41
215P4P .....	41
370P4P .....	41
Pressure Bulb	
30907 .....	29, 31, 33
Pressure Switch	
201609P .....	5, 7
201927P .....	5, 9
39035P .....	5
Pulley	
202795 .....	37
Pulley Assembly	
38007 .....	37
Pump	
201566P .....	19
Pump Assembly	
201442P .....	19
Push-to-Start Switch	
801434W .....	7

## R

Rack	
201664 .....	39
Rear Panel Assembly	
202319 .....	13
Receptacle, 1 Circuit	
26301 .....	45
Receptacle, 6 Circuit	
26708 .....	45
Receptacle, 9 Circuit	
26163 .....	45
Reduction Gear	
37403P .....	39
37404P .....	39
Retainer Clip	
36014 .....	35
Retaining Ring	
23748 .....	19
27197 .....	39
Ring Terminal	
00110 .....	47
Roll Pin	
10416 .....	19
Rubber Foot	
34318 .....	41

## S

Screw	
M400057 .....	33
M402574 .....	11
201773 .....	39
23962 .....	5, 7, 9, 11, 13
27196 .....	41
27202 .....	21, 23, 25, 27
27220 .....	37
27229 .....	19
29273 .....	39

32814 .....	39
33562 .....	13, 15, 17
34337 .....	13
34565 .....	19
35148 .....	41
35369 .....	19, 29, 31, 33
36639 .....	19
38272 .....	41
39397 .....	15, 17
39432 .....	21, 23, 25, 27
39566 .....	29, 31, 33
39733 .....	41
39739 .....	37
501086 .....	5, 7, 9, 13, 17
501524 .....	7
503661 .....	7
51780 .....	41
52909 .....	13, 19, 41, 45

Sealant	
200996P .....	21, 25, 31
Service Cabinet Kit	
38612LP .....	41
38612QP .....	41
38612WP .....	41
Shaft	
56461P .....	19
Shipping Brace	
200552 .....	49
200553 .....	49
Shipping Plug	
38149 .....	49
Silicone Grease	
26594P .....	37
Siphon Break Kit	
562P3 .....	35
Slide	
26493 .....	39
Spline Insert	
29728 .....	21, 23, 25, 27
Spring Clip	
210202 .....	19
Spring Hook Tool	
321P4 .....	51
Standpipe Adapter	
36878 .....	35
Standpipe Strap	
33489 .....	35
Strain Relief	
32219 .....	35
38384 .....	13
Switch	
33445 .....	11

## T

Temperature Control	
201279P .....	9
Temperature Switch	
35115 .....	5, 7, 9
36335 .....	5
Terminal Extractor Tool	
283P4 .....	43
Timer	
200927P .....	5

N/A items do not appear in index.

201100P .....	9
201101 .....	9
37927P .....	5
Timer Knob	
201501Q .....	5, 9
201501W .....	5, 9
Timer Knob Assembly	
512117W .....	7
Timer Skirt Assembly	
36700Q .....	5, 9
36700W .....	5, 9
Tool Kit	
725P3 .....	51
Top	
37992LP .....	13
37992QP .....	13
37992WP .....	13
Top Assembly	
202326WP .....	13
Top Cover	
39905Q .....	5, 9
39905W .....	5, 7, 9
Torx Bit	
282P4 .....	51
Transformer	
201587P .....	7
Transmission Assembly	
38165P .....	39
Transmission Case Assembly	
33223P .....	39
Transmission Cover Assembly	
37471 .....	39
Transmission Oil	
27243P .....	39
Transmission Rebuild Kit	
RB150004 .....	39
Transmission Sealant	
37577P .....	39
Tub Assembly	
202363 .....	29
202374 .....	21
39240P .....	25, 27
39252P .....	21, 23
Tub Cover and Gasket Assembly	
201430 .....	29
Tub Cover Assembly	
39169 .....	31, 33
Tub Cover Gasket	
38359 .....	29, 31, 33
Tub Cover Removal Tool	
273P4 .....	51
Tub Kit	
39250P .....	21, 23
Tubing	
202700 .....	29, 31, 33
Tub-to-Pump Hose	
38351 .....	35

## W

Warning Label	
39251 .....	13
500049 .....	29, 31, 33

500316 .....	13
803260 .....	41
Washer	
202010 .....	33
20290 .....	15, 17
21456 .....	39
26509 .....	37, 39
27015 .....	37
28094 .....	21, 23, 25, 27
29260 .....	39
35092 .....	39
35535 .....	37
37772 .....	19
39249 .....	29, 31, 33
504082 .....	19
52549 .....	19
802254 .....	15, 17
803615 .....	15, 17
81392 .....	19
Washtub	
719P3 .....	25
Washtub Gasket	
39122 .....	21, 23, 25, 27
Washtub Kit	
719P3 .....	21, 23, 27
Water Hose	
F200116 .....	15, 17
Weldment and Bearing Assembly	
39253 .....	37
39254 .....	37
Wire Clip	
36274 .....	45
51291 .....	47
687500 .....	47
Wire Harness Assembly	
38661P .....	53
Wire, 12 Gauge	
45380 .....	53
Wire, 18 Gauge	
45001 .....	53

N/A items do not appear in index.

[illegible]