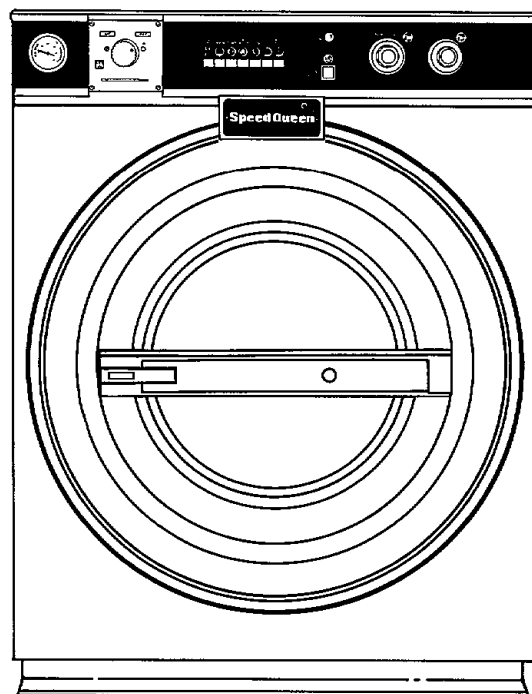


Speed Queen

A **Raytheon** Company

Parts and Service Manual for Washer-Extractor

Model WX75130



Speed Queen Company
Shepard Street
P.O. Box 990
Ripon, Wisconsin 54971-0990

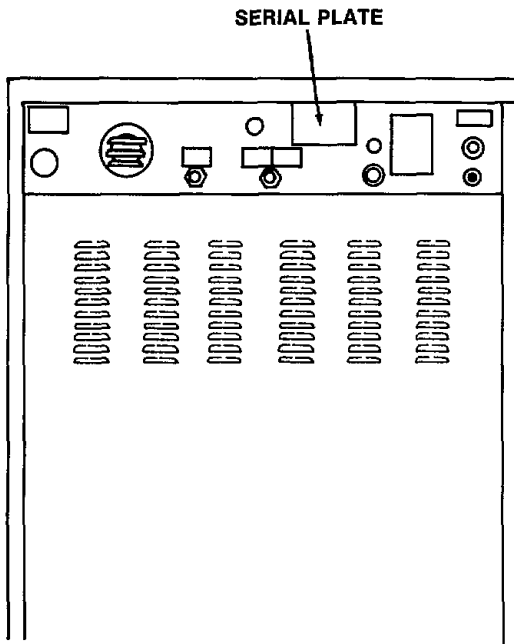
Part No. G176701R1
6/89

WARNING

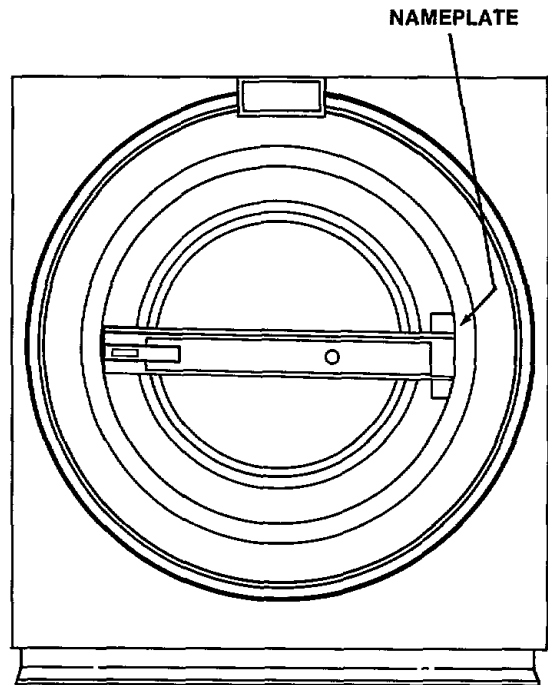
FAILURE TO INSTALL, MAINTAIN, AND/OR OPERATE THIS MACHINE ACCORDING TO MANUFACTURER'S INSTRUCTIONS MAY RESULT IN CONDITIONS WHICH CAN PRODUCE BODILY INJURY AND/OR PROPERTY DAMAGE.

Serial Plate and Nameplate Location

When writing for information on the Washer-Extractor, be sure to mention model and serial numbers. The model and serial numbers will be found as shown below.



REAR VIEW



FRONT VIEW

Table of Contents

SECTION I PARTS

Cylinder Shaft, Bearing Housing, Pulley and Belts (through Serial No. G0571000).....	4
Cylinder Shaft, Bearing Housing, Pulley and Belts (starting Serial No. G0571001).....	6
Control Panel, Outer Tub, Chassis, Cabinet Top, Front, Side, and Rear Panels (through Serial No. G0571000).....	8
Outer Tub, Chassis, Cabinet Top, Side and Rear Panels (starting Serial No. G0571001).....	10
Outer Tub Front Panel and Door Assembly (through Serial No. G0571000).....	12
Outer Tub Front Panel and Door Assembly (starting Serial No. G0571001).....	14
Card Reader, Selector Switch, Thermostats and Motors (through Serial No. G0571000).....	16
Control Panel, Card Reader, Front Panel and Thermostats (starting Serial No. G0571001)...	18
Motors, Pulleys, Belts, Motor Brackets and Fuse (starting Serial No. G0571001).....	20
Dispenser, Siphon Break, Hoses and Drain Valve Assembly (through Serial No. G0571000).....	22
Dispenser, Siphon Break, Hoses and Drain Valve Assembly (starting Serial No. G0571001).....	24
Inlet Valve and Hoses (through Serial No. G0571000).....	26
Inlet Valve and Hoses (starting Serial No. G0571001).....	28
Steam Inlet Valve and Fittings (starting Serial No. G0571001).....	30
Electric Heating Kit (starting Serial No. G0571001).....	32
Control Tray and Controls (starting Serial No. G0571001).....	34
Control Tray and Controls (through Serial No. G0571000).....	36

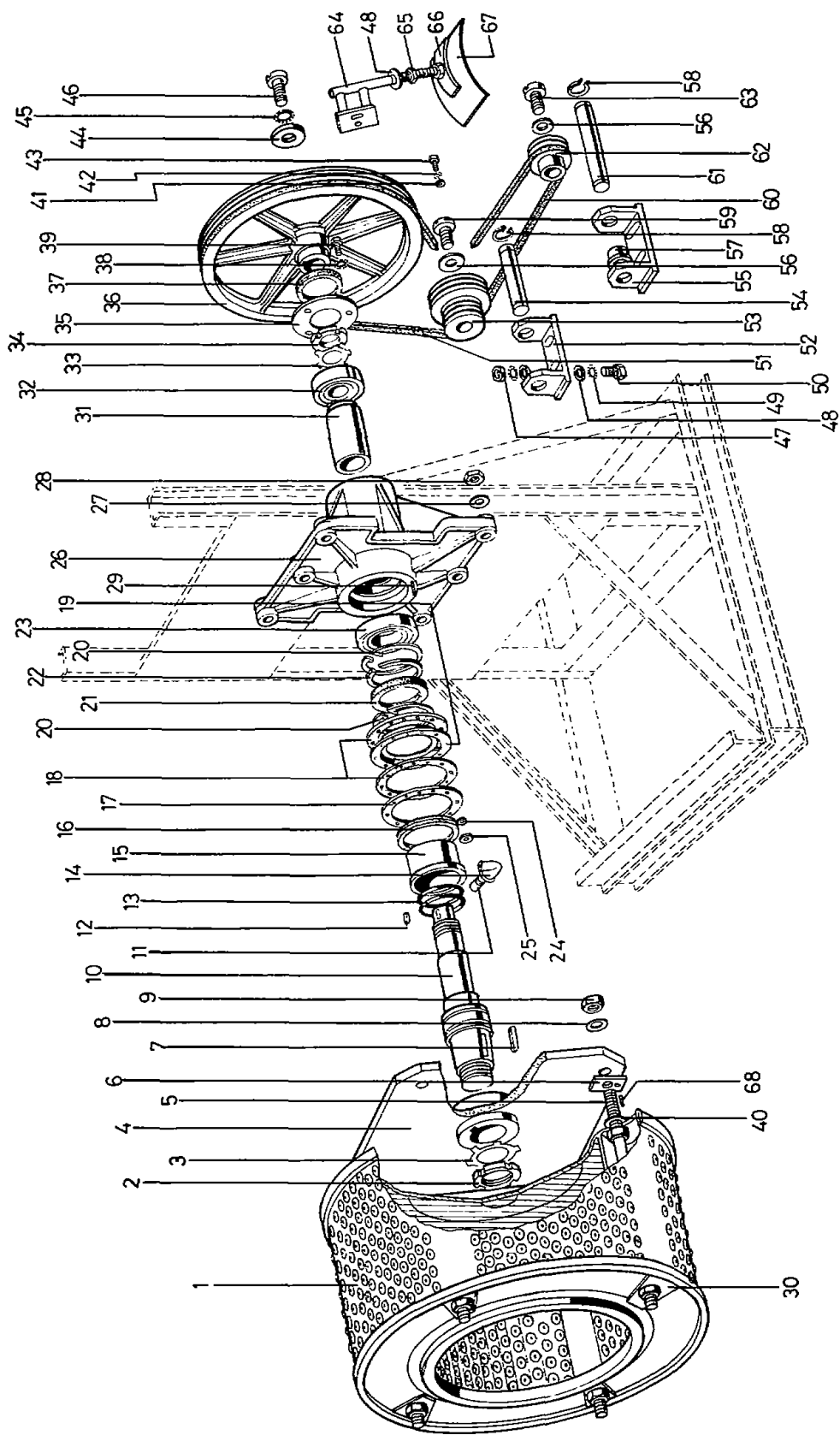
SECTION II SERVICE PROCEDURES

1. Cabinet Top	37
2. Control Panel	37
3. Selector Switches	37
4. Card Reader	37
5. Reversing Timer (Card Control Models)	38
6. Contactors	38

7. Relays	38
8. Deceleration Timing Device	38
9. Pressure Switches	38
10. Inlet Valve (Hot Water - Two Track Valve) ...	38
11. Inlet Valve (Cold Water - Single Track Valve)	39
12. Three Track Valve	39
13. Dispenser	39
14. Door Open Light	39
15. On Light	39
16. Siphon Break	40
17. Loading Door	40
18. Door Lock Assembly	40
19. Door Safety Switch	41
20. Door Gasket	41
21. Outer Tub Front Panel	41
22. Front Panel	42
23. Rear Panel	42
24. Belts	42
25. Cylinder Pulley Assembly	43
26. Wash Basket Cylinder and Shaft Removal ...	43
27. Bearing Housing	44
28. Side Panels (Right or Left)	45
29. Outer Tub	45
30. Motor	45
31. Pressure Bulbs	46
32. Drain Valve	46
33. Fuse Holder and Resistor Assembly	46
34. Terminal Block	46

SELECTION III SERVICE HELPS

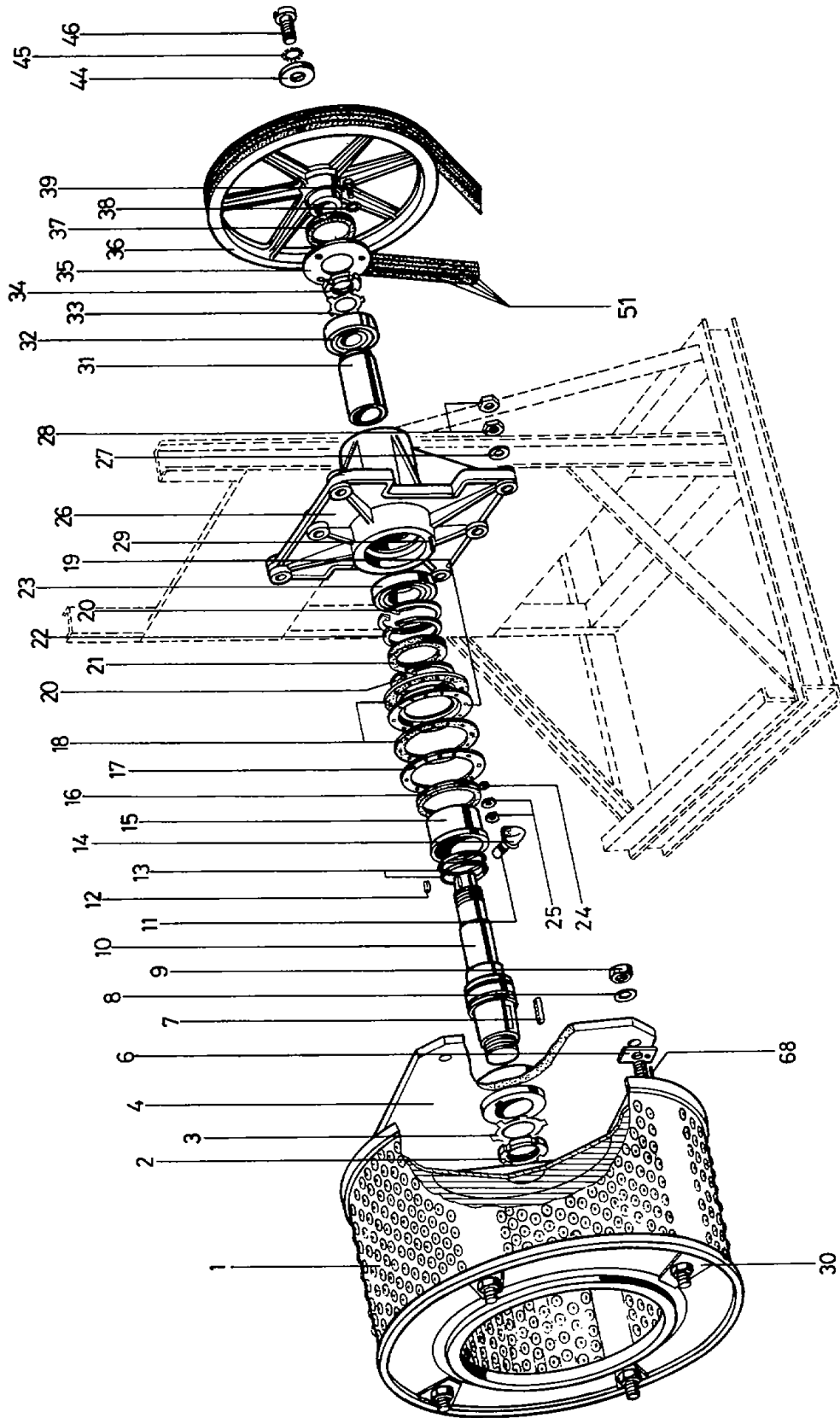
35. No Hot Water	47
36. No Cold Water	47
37. Washer Does Not Start and The Push Button "ON/OFF" is on.	48
38. Cylinder Does Not Fill	48
39. Water Does Not Shut Off	49
40. Water Does Not Drain From Clothes Cylinder	49
41. Washer Does Not Tumble	49
42. Washer Does Not Spin	50
43. Motor Overload Protector Cycles Repeatedly (Wash or Spin)	50
44. Cylinder Does Not Turn	50
45. Door Will Not Open	51
46. Door Leaks	51
47. Excessive Vibration	51



**CYLINDER, SHAFT, BEARING HOUSING,
PULLEY AND BELTS
(Through Serial No. G0571000)**

ITEM NO.	PART NO.	DESCRIPTION	ITEM NO.	PART NO.	DESCRIPTION
* 1	G200485	WASH BASKET CYLINDER	36	G200030	PULLEY
2	G131474	LOCKING NUT	37	G131821	"V" RING SEAL
3	G200576	LOCKWASHER	38	G149690	LOCKWASHER
4	G200543	CYLINDER COUPLER	39	G146498	SCREW
5	G200535	BASKET SHOVEL STRETCHER	40	G115907	GASKET
6	G200477	BASKET COUPLING PART	41	G149518	WASHER
7	G127910	KEY	42	G149708	WASHER
8	G149336	WASHER	43	G146407	SCREW
9	G149930	NUT	44	G115717	WASHER
*10	G200469	CYLINDER SHAFT	45	G149674	LOCKWASHER
11	G200063	BEARING CASE DRAIN	46	G146811	SCREW
12	G127829	KEY	47	G150235	NUT
13	G134007	"O" RING	48	G149419	WASHER
14	G129494	ELBOW	49	G149682	WASHER
15	G200022	SEAL RING	50	G157354	SCREW
16	G131839	V-RING	51	G129288	BELT
17	G212738	COVER PLATE	52	G239400	EXTRACT MOTOR BRACKET
18	G122614	GASKET	53	G201756	MOTOR PULLEY
19	G122606	SEAL COVER	54	G239384	MOTOR BRACKET SHAFT
20	G131656	RETAINER RING	55	G239434	WASH MOTOR BRACKET
21	G127639	SEAL	56	G111278	WASHER
22	G200014	SEPARATOR RING	57	G200782	SLEEVE
23	G128744	BEARING	58	G132555	WASHER
24	G149351	WASHER	59	G146381	SCREW
25	G149963	NUT	60	G129296	BELT
26	G200006	BEARING HOUSING	61	G239392	MOTOR BRACKET SHAFT
27	G149435	WASHER	62	G200766	MOTOR PULLEY
28	G150243	NUT	63	G146399	SCREW
29	G162057	SCREW	64	G230706	TENSION BRACKET
30	G117564	SUPPORT BRACKET	65	G150656	SELF-BLOCKING NUT
31	G200055	SPACER	66	G217893	TIGHTENER SHOE
32	G128710	BEARING	67	G213173	EXTRACT MOTOR SHIELD
33	G131409	LOCKWASHER		G211920	WASH MOTOR SHIELD
34	G131466	LOCKNUT	68	G150821	FLEXIBLE PIN
35	G200097	SEAL COVER	*	G200451	CYLINDER AND SHAFT ASSEMBLY (COMPLETE)

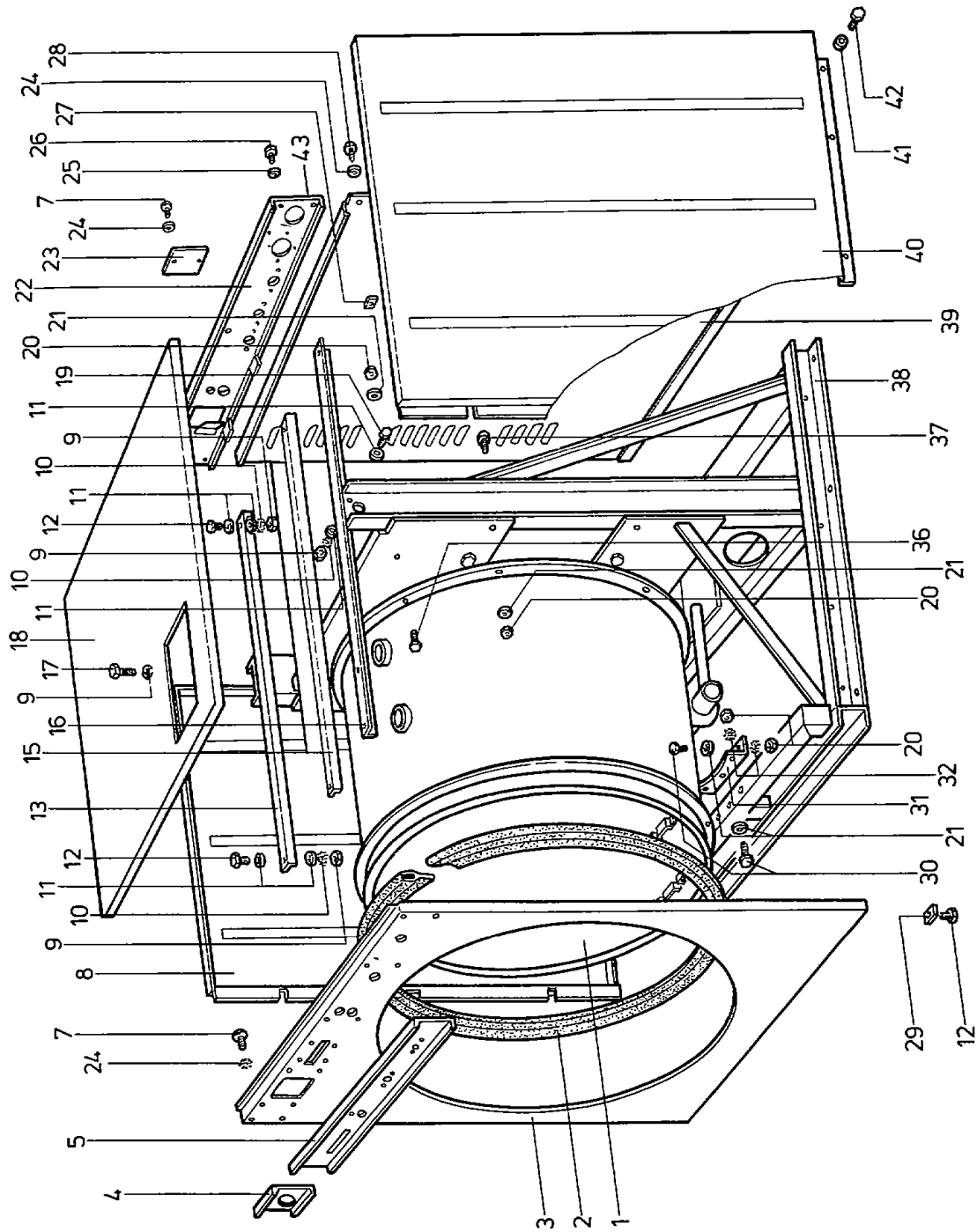
**CYLINDER, SHAFT, BEARING HOUSING,
PULLEY AND BELTS
(Through Serial No. G0571000)**



**CYLINDER, SHAFT, BEARING HOUSING,
PULLEY AND BELTS**
(Starting Serial No. G0571001)

ITEM NO.	PART NO.	DESCRIPTION	ITEM NO.	PART NO.	DESCRIPTION
1	G200485	WASH BASKET CYLINDER	27	G149435	WASHER
2	G131474	LOCKING NUT	28	G150243	NUT
3	G200576	LOCKWASHER	29	G162057	ALLEN SCREW
4	G200543	CYLINDER COUPLER	30	G117564	SUPPORT BRACKET
6	G200477	BASKET COUPLING PART	31	G200055	SPACER
7	G127910	KEY	32	G128710	BEARING
8	G149336	WASHER	33	G131409	LOCKWASHER
9	G149930	NUT	34	G131466	LOCKNUT
10	G200469	CYLINDER SHAFT	35	G200097	SEAL COVER
11	G200063	BEARING CASE DRAIN	36	G200030	PULLEY
12	G127829	KEY	37	G131821	"V" RING SEAL
13	G134007	"O" RING	38	G149690	LOCKWASHER
14	G129494	ELBOW	39	G146498	SCREW
15	G200022	SEAL RING	44	G115717	WASHER
16	G131839	V-RING	45	G149674	LOCKWASHER
17	G212738	COVER PLATE	46	G146811	SCREW
18	G122614	GASKET	51	G129288	BELT
19	G122606	SEAL COVER	68	G150821	FLEXIBLE PIN
20	G131656	RETAINER RING	*	G200451	CYLINDER AND SHAFT
21	G127639	SEAL			ASSEMBLY (Complete)
22	G200014	SEPARATOR RING			
23	G128744	BEARING			
24	G149351	WASHER			
25	G149963	NUT			
26	G200006	BEARING HOUSING			

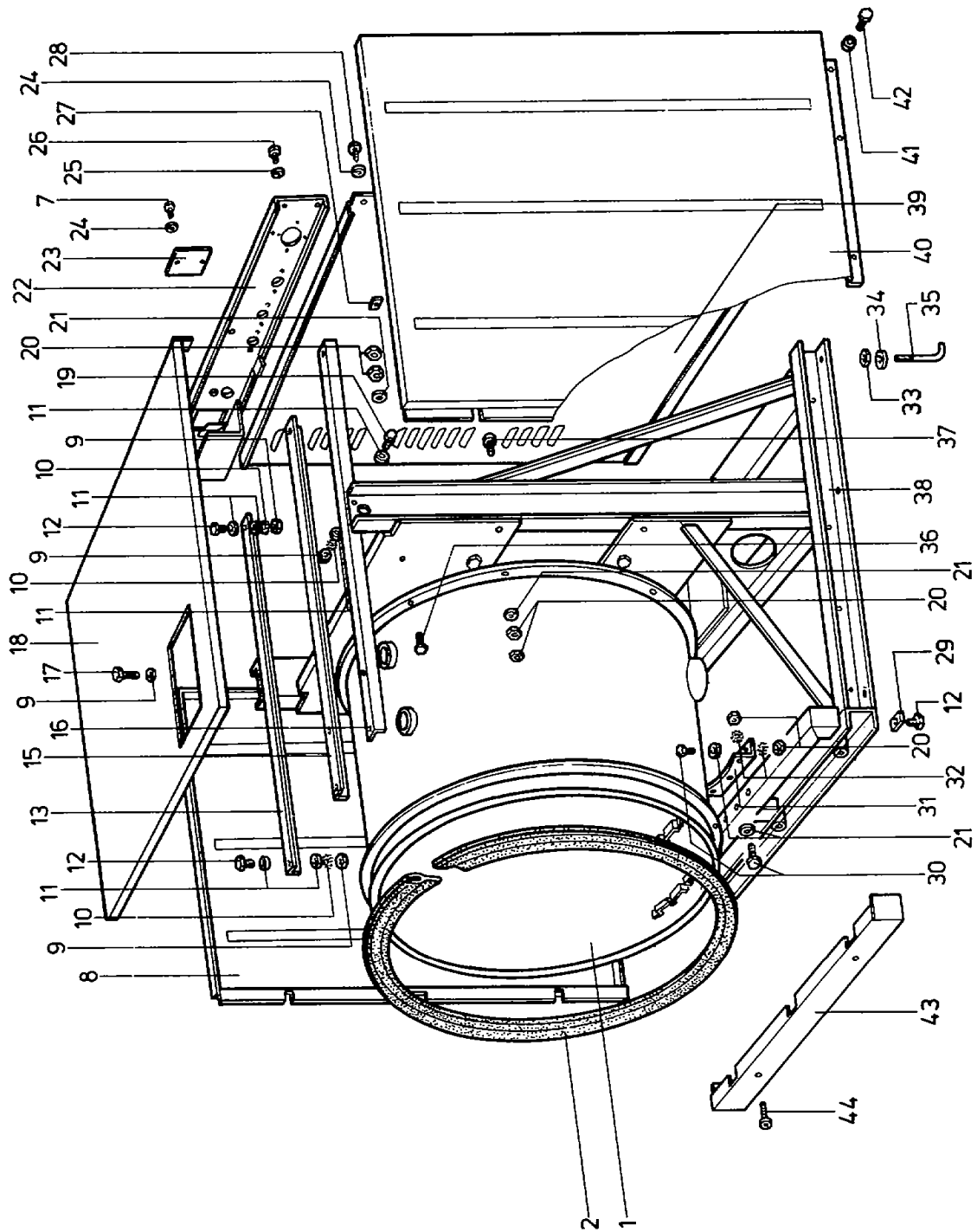
**CYLINDER, SHAFT, BEARING HOUSING,
 PULLEY AND BELTS**
 (Starting Serial No. G0571001)



**CONTROL PANEL, OUTER TUB, CHASSIS, CABINET TOP,
FRONT, SIDE, AND REAR PANELS
(Through Serial No. G0571000)**

ITEM NO.	PART NO.	DESCRIPTION	ITEM NO.	PART NO.	DESCRIPTION
1	G212613	OUTER TUB	23	G153239	ACCESS COVER
*2	G132001	NEOPRENE GASKET	24	G149476	WASHER
3	G212506	FRONT PANEL	25	G149534	WASHER
4	G245597	CONTROL PANEL END	26	G146274	SCREW
5	G245589	CONTROL PANEL	27	G135228	NUT
7	G146076	SCREW	28	G149153	SCREW
8	G212787	SIDE PANEL (LEFT)	29	G115741	NUT
9	G150227	NUT	30	G146506	SCREW
10	G149716	WASHER	31	G200196	OUTER TUB SUPPORT BRACKET
11	G149526	WASHER	32	G149690	WASHER
12	G146233	SCREW	36	G146514	SCREW
13	G248641	UPPER ANGLE (LEFT)	37	G144485	ALLEN SCREW
15	G200147	UPPER ANGLE (CENTER)	38	G212522	CHASSIS
16	G200139	UPPER ANGLE (RIGHT)	39	G212811	REAR PANEL
17	G146340	SCREW	40	G212779	SIDE PANEL (RIGHT)
18	G200881	CABINET TOP	41	G153205	WASHER
19	G146316	SCREW	42	G165621	SCREW
20	G150193	NUT	43	G139683	BUSHING
21	G149500	WASHER	*	G131995	NEOPRENE GASKET (Bulk-order by the foot)
22	G248666	REAR CROSS CHANNEL			

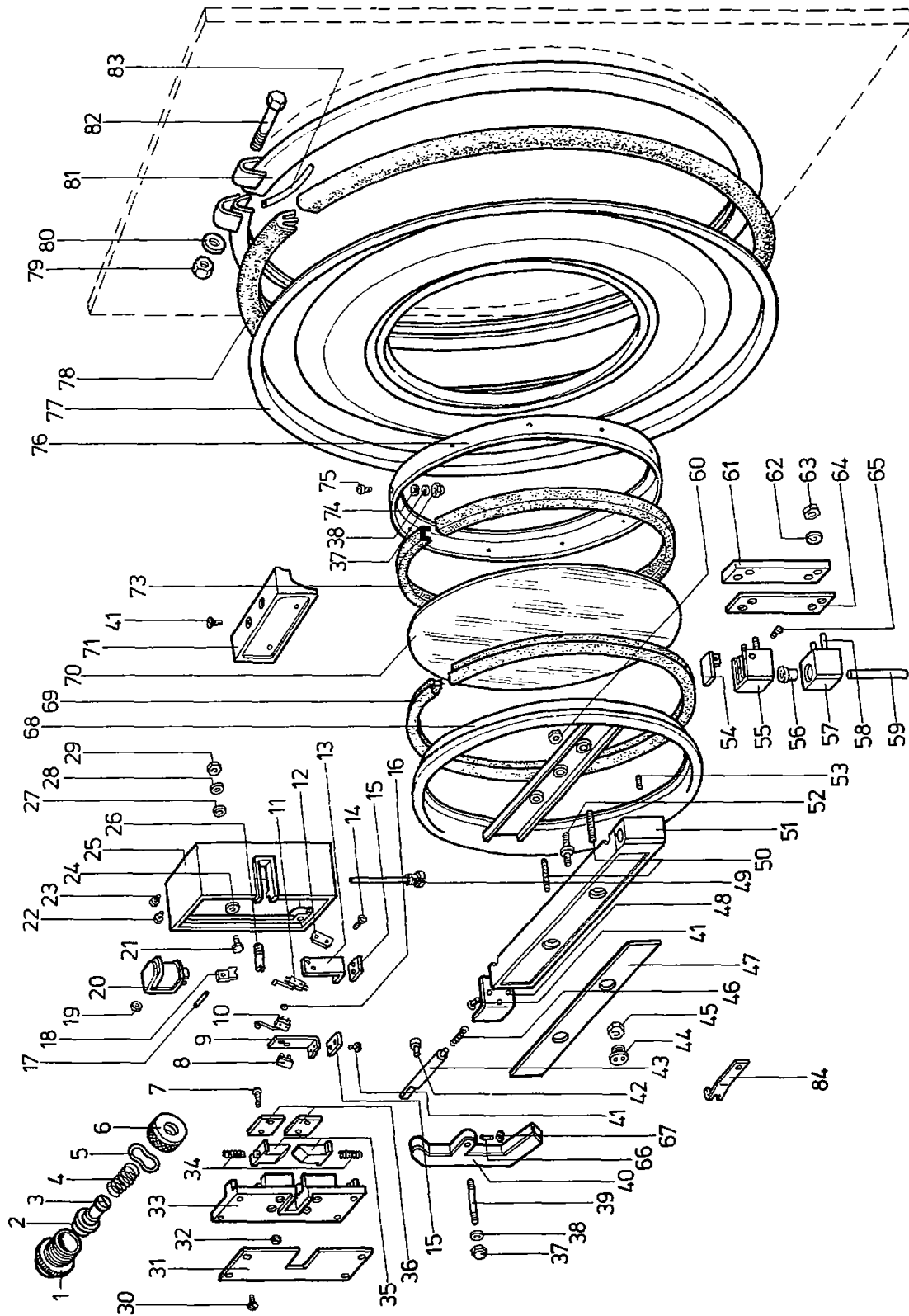
**CONTROL PANEL, OUTER TUB, CHASSIS, CABINET TOP,
FRONT, SIDE, AND REAR PANELS
(Through Serial No. G0571000)**



**OUTER TUB, CHASSIS, CABINET TOP,
SIDE AND REAR PANELS
(Starting Serial No. G0571001)**

ITEM NO.	PART NO.	DESCRIPTION	ITEM NO.	PART NO.	DESCRIPTION
1	G253344	OUTER TUB	31	G200196	OUTER TUB SUPPORT BRACKET
*2	G132001	NEOPRENE GASKET	32	G149690	LOCKWASHER
7	G146076	SCREW	33	G164350	LOCKNUT
8	G212787	SIDE PANEL (LEFT)	34	G149393	WASHER
9	G150227	NUT	35	G163287	HOLD-DOWN BOLT (Includes Items No. 33 and 34)
10	G149716	LOCKWASHER	36	G146514	SCREW
11	G149526	WASHER	37	G144485	NUT
12	G146233	SCREW	38	G212522	CHASSIS
13	G248641	UPPER ANGLE (LEFT)	39	G212811	REAR PANEL
15	G200147	UPPER ANGLE (CENTER)	40	G212779	SIDE PANEL (RIGHT)
16	G200139	UPPER ANGLE (RIGHT)	41	G153205	WASHER
17	G146340	SCREW	42	G165621	SCREW
18	G253500	CABINET TOP	43	G253468	FRONT BASE
19	G146316	SCREW	44	G129932	SCREW
20	G150193	NUT			
21	G149500	WASHER	*	G131995	NEOPRENE GASKET (Bulk-Order by the Foot)
22	G248666	REAR CROSS CHANNEL			
23	G153239	ACCESS COVER			
24	G149476	WASHER			
25	G149534	WASHER			
26	G146274	SCREW			
27	G135228	NUT			
28	G149153	SCREW			
29	G115741	NUT			
30	G146506	SCREW			

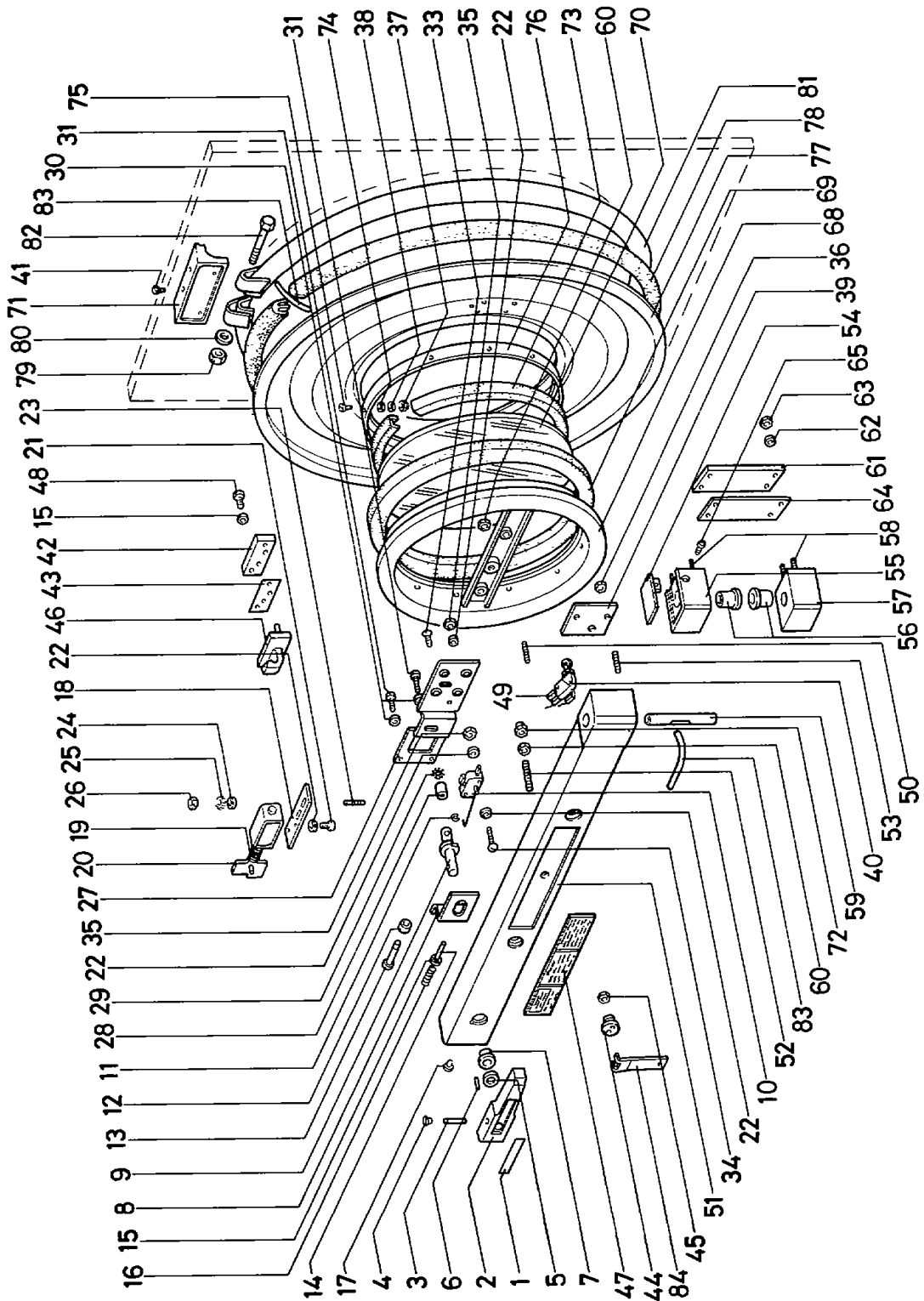
OUTER TUB, CHASSIS, CABINET TOP,
SIDE AND REAR PANELS
(Starting Serial No. G0571001)



OUTER TUB FRONT PANEL AND DOOR ASSEMBLY
 (Through Serial No. G0571000)

ITEM NO.	PART NO.	DESCRIPTION	ITEM NO.	PART NO.	DESCRIPTION
1	G116970	PUSH-BUTTON GUIDE	49	G117085	UNLOCKING SCREW
2	G160267	PUSH-BUTTON	50	G152116	ALLEN SCREW
3	G117119	PUSH-BUTTON HEAD	51	G248559	DOOR BRACKET
4	G116996	SPRING	52	G163048	SCREW
5	G132498	SPRING WASHER	53	G152108	ALLEN SCREW
6	G116988	GUIDE NUT	54	G161380	HINGE COVER
7	G117135	SCREW	55	G205468	HINGE
11	G138586	SWITCH	56	G155515	BEARING
12	G117143	INSULATION	57	G205484	HINGE
13	G117069	SWITCH BRACKET	58	G157735	HINGE BOLT
14	G155317	SCREW	59	G212449	HINGE SHAFT
15	G117077	SWITCH BRACKET	60	G149948	NUT
17	G153890	BOLT	61	G201004	HINGE BRACKET
18	G163006	SAFETY END	62	G149351	WASHER
19	G163055	SAFETY LOCK COIL END	63	G149963	NUT
20	G163071	SAFETY LOCK COIL	64	G200998	GASKET
	G110023	RECTIFIER	65	G161646	SETSCREW
21	G144923	SCREW	66	G144006	SETSCREW
22	G110197	SCREW	67	G149922	NUT
23	G149492	SCREW	*68	G248591	DOOR INNER RING
24	G149310	WASHER	69	G178996	DOOR GASKET
25	G163014	SAFETY BOX	70	G134353	DOOR GLASS
26	G117044	SAFETY END SHAFT	71	G161331	NAMEPLATE HOUSING
27	G117093	SAFETY BOX GASKET	72	G177634	NAMEPLATE
28	G160838	WASHER	73	G131904	DOOR GLASS GASKET
29	G149971	NUT	74	G116129	GASKET
30	G130468	SCREW	75	G145649	SCREW
31	G248757	BOX COVER TRIM	76	G248563	OUTER RING
32	G150185	NUT	**77	G212456	OUTER TUB FRONT PANEL
33	G163022	SAFETY BOX COVER	***78	G131946	NEOPRENE GASKET
34	G117028	LOCK LATCH SPRING	79	G150193	NUT
35	G117010	LOCK LATCH	80	G149500	WASHER
36	G117127	LATCH GUIDE	81	G212480	CLAMP RING
37	G150151	NUT	82	G146563	SCREW
38	G149328	WASHER	83	G205419	WIRE TUBE
39	G116954	LOCK LEVER SHAFT	84	G101097	PLUG KEY
40	G116947	LOCK LEVER	*	G248575	COMPLETE DOOR ASSEMBLY
41	G169060	SCREW	**	G249144	COMPLETE OUTER TUB FRONT
42	G144261	ALLEN SCREW			PANEL
43	G200972	LOCK SHAFT	** *	G131938	NEOPRENE GASKET (Bulk-order by the foot)
44	G205583	DOOR BRACKET PLUG			
45	G150201	NUT			
46	G117218	LOCK SHAFT SPRING			
47	G179028	DOOR BRACKET PLATE			
48	G248567	BRACKET			

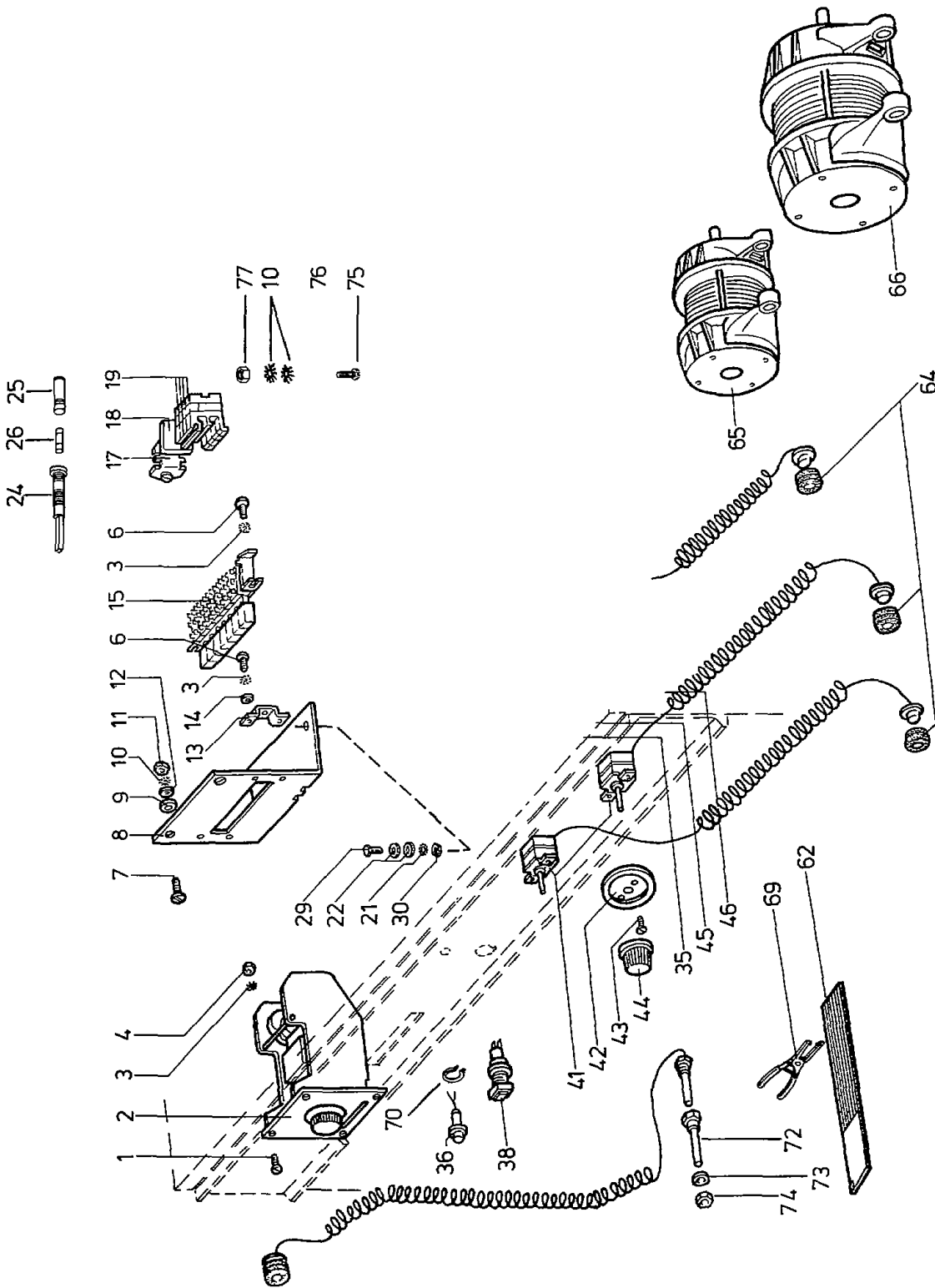
OUTER TUB FRONT PANEL AND DOOR ASSEMBLY
(Through Serial No. G0571000)



OUTER TUB FRONT PANEL AND DOOR ASSEMBLY
 (Starting Serial No. G0571001)

ITEM NO.	PART NO.	DESCRIPTION	ITEM NO.	PART NO.	DESCRIPTION
1	G144634	HANDLE PLATE	47	G132183	INSTRUCTION PLATE
2	G200865	HANDLE	48	G144923	SCREW
3	G150862	BOLT	49	G159376	TERMINAL PROTECTOR
4	G148031	PLUG	50	G152116	ALLEN SCREW
5	G128066	WASHER	51	G201350	DOOR BRACKET
6	G150771	BOLT	52	G254136	ALLEN SCREW
7	G128827	BEARING	53	G144113	ALLEN SCREW
8	G201384	BRACKET	54	G161380	HINGE COVER
9	G200873	LOCKING BOLT	55	G205450	HINGE
10	G201459	SAFETY SWITCH	56	G155515	BEARING
11	G149583	WASHER	57	G205476	HINGE
12	G128033	BEARING	58	G157735	HINGE SCREW
13	G200915	BOLT	59	G205633	HINGE SHAFT
14	G150912	BOLT	60	G149948	NUT
15	G149310	WASHER	61	G205641	HINGE BRACKET
16	G128264	ANTI-BLOCKING SPRING	62	G149351	WASHER
17	G148049	PLUG	63	G149963	NUT
18	G200923	SOLENOID BRACKET	64	G161448	GASKET
19	G128207	SPRING	65	G161646	ALLEN SCREW
20	G201467	SAFETY LOCK SOLENOID	* 68	G253336	DOOR INNER RING
21	G146019	SCREW	69	G178996	DOOR GASKET
22	G152132	WASHER	70	G134353	DOOR GLASS
23	G144048	ALLEN SCREW	71	G161331	NAMEPLATE HOUSING
24	G149534	WASHER	72	G150656	NUT
25	G149724	LOCKWASHER	73	G131904	DOOR GLASS GASKET
26	G150177	NUT	74	G116129	GASKET
27	G200956	SAFETY LOCK COVER	75	G145649	SCREW
28	G250241	SWITCH END PIECE	76	G248583	OUTER RING
29	G149732	LOCKWASHER	** 77	G253294	OUTER TUB FRONT PANEL
30	G149328	WASHER	*** 78	G131946	NEOPRENE GASKET
31	G145649	SCREW	79	G150193	NUT
33	G144865	SCREW	80	G149500	WASHER
34	G146050	SCREW	81	G212480	CLAMP RING
35	G149906	NUT	82	G146563	SCREW
36	G150227	NUT	83	G205419	WIRE TUBE
37	G150151	NUT	84	G101097	PLUG KEY
38	G149328	WASHER	*	G253328	COMPLETE DOOR ASSEMBLY
39	G246066	DOOR BRACKET COVER	**	G200857	COMPLETE OUTER TUB FRONT
40	G177691	DOOR SAFETY SWITCH			PANEL WITH DOOR AND LOCK
41	G169060	SCREW	***	G131938	NEOPRENE GASKET
42	G201681	FIXING BASE			(Bulk-Order By The Foot)
43	G128835	GASKET			
44	G205583	DOOR BRACKET PLUG			
45	G150201	NUT			
46	G128090	DOOR CATCH			

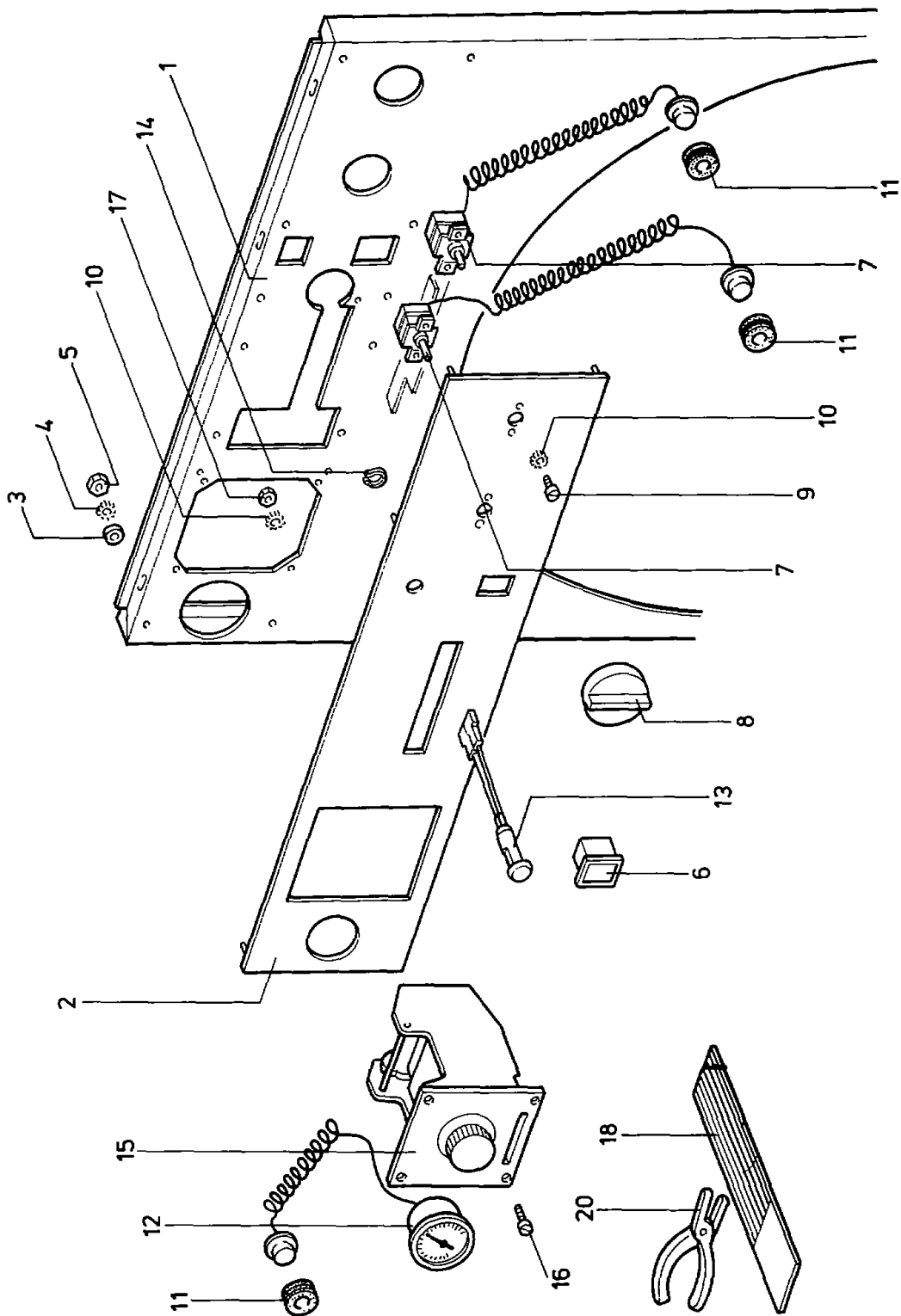
**OUTER TUB FRONT PANEL AND DOOR ASSEMBLY
(Starting Serial No. G0571001)**



**CARD READER, SELECTOR SWITCH,
THERMOSTATS AND MOTORS
(Through Serial No. G0571000)**

ITEM NO.	PART NO.	DESCRIPTION	ITEM NO.	PART NO.	DESCRIPTION
1	G145649	SCREW	30	G150227	NUT
2	G248617	TIMER (CARD READER)	36	G161323	PILOT LIGHT
	G143784	MOTOR-REDUCER	38	G163205	DOOR OPEN SWITCH/LIGHT
	G118984	LEVER MICROSWITCH	41	G162982	THERMOSTAT
	G162586	START-STOP MICROSWITCH	42	G161661	BEZEL
	G161752	TIMER FRONT	43	G145664	SCREW
	G161745	TIMER BUTTON	44	G177816	KNOB
3	G149732	WASHER	62	G132969	CARD (BLANK)
4	G149922	NUT		G226274	CARD (TEST)
6	G146076	SCREW	64	G157198	GROMMET
7	G144741	SCREW	65	G143503	MOTOR
8	G201392	CONTROL PLATE		G128116	MOTOR PULLEY KEY
9	G153205	WASHER		G109801	OVERLOAD PROTECTOR
10	G149724	WASHER	66	G143529	MOTOR
11	G149914	NUT		G128124	MOTOR PULLEY KEY
12	G149369	WASHER		G109801	OVERLOAD PROTECTOR
13	G121582	SELECTOR SWITCH BRACKET	69	G166488	PROGRAMMING PUNCH
14	G149476	WASHER	70	G173252	SNAP RING
15	G140004	SELECTOR SWITCH	71	G135079	THERMOMETER
	G162818	GRAY KEY	72	G236844	SHEATH
	G162826	RED KEY	73	G115857	GASKET
17	G155754	CLAMP	74	G236349	NUT
18	G155275	END COVER	75	G146282	SCREW
19	G155457	TERMINAL	76	G176248	GROUND LUG
21	G149716	WASHER	77	G150177	NUT
22	G149526	WASHER			
24	G122952	FUSE HOLDER AND RESISTOR			
25	G137661	FUSE HOLDER CAP			
26	G137653	FUSE			
29	G140233	SCREW			

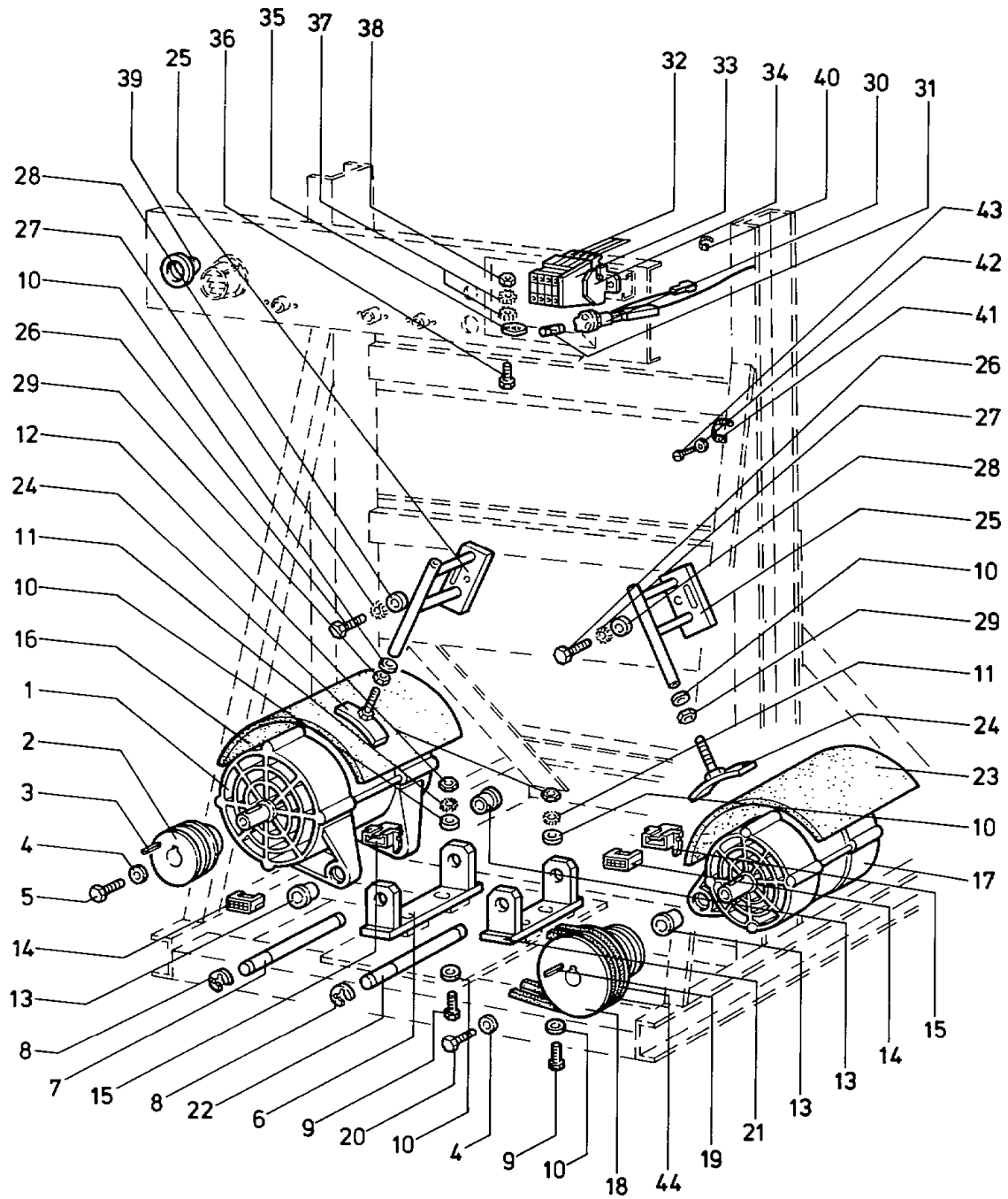
**CARD READER, SELECTOR SWITCH, THERMOSTATS
AND MOTORS
(Through Serial No. G0571000)**



CONTROL PANEL, CARD READER, FRONT PANEL AND THERMOSTATS
 (Starting Serial No. G0571001)

ITEM NO.	PART NO.	DESCRIPTION	ITEM NO.	PART NO.	DESCRIPTION
1	G253278	FRONT PANEL		G143784	MOTOR-REDUCER
2	G253435	CONTROL PANEL		G118984	LEVER MICROSWITCH
3	G160838	WASHER		G162586	START-STOP MICROSWITCH
4	G149724	LOCKWASHER		G161752	TIMER FRONT
5	G149914	NUT		G161745	TIMER BUTTON
6	G182196	DOOR-OPEN LIGHT		G113852	CONTROL KNOB
7	G117754	THERMOSTAT		G123935	LEAD CAM
8	G122283	KNOB	16	G145631	SCREW
9	G145664	SCREW	17	G149922	NUT
10	G149732	LOCKWASHER	18	G132969	CARD (Blank)
11	G157198	GROMMET		G226274	CARD (Test)
12	G132134	THERMOMETER	20	G133280	PROGRAMMING PUNCH
13	G161323	PILOT LIGHT			
14	G173252	SNAP RING			
15	G248617	TIMER			

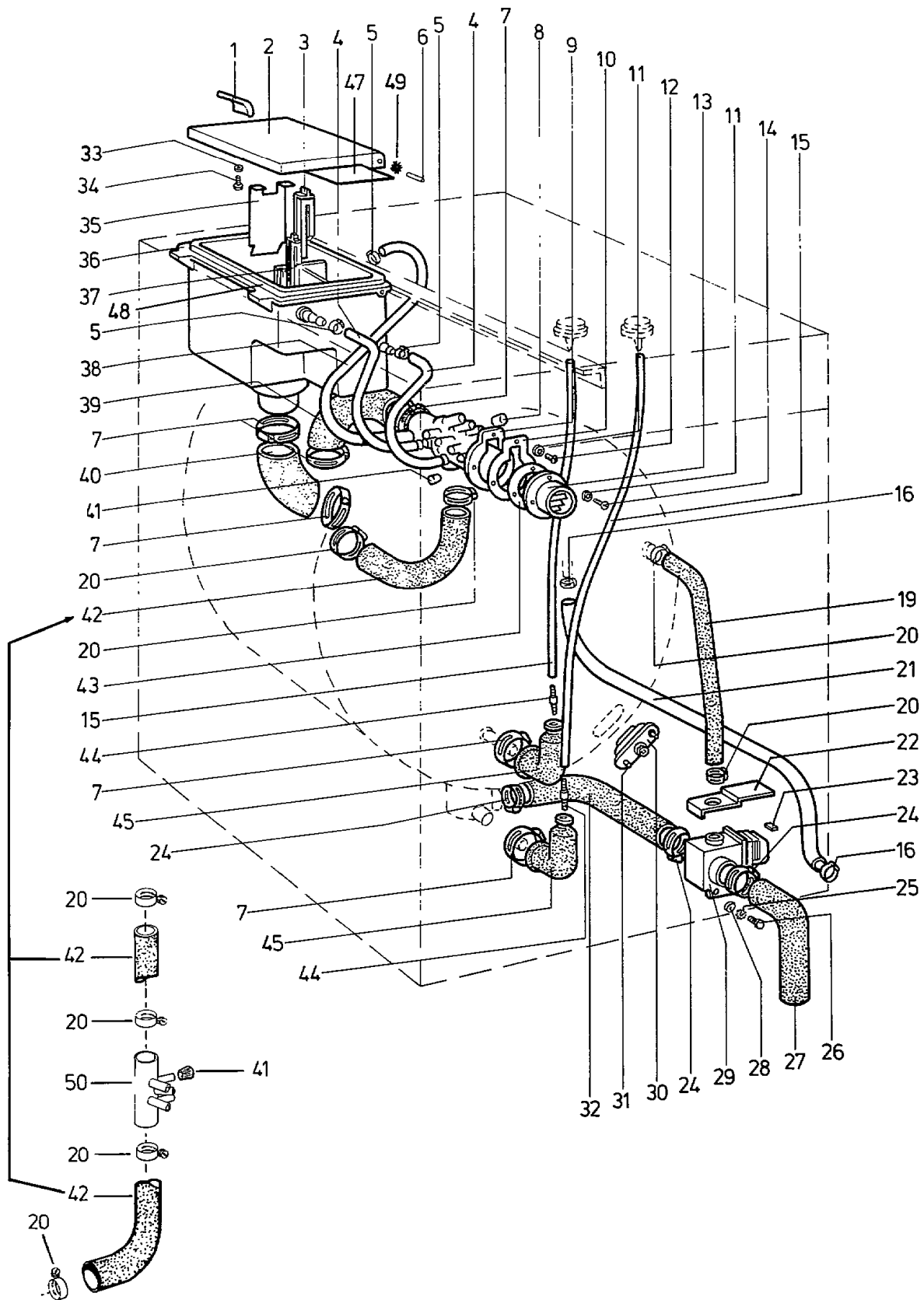
**CONTROL PANEL, CARD READER, FRONT PANEL AND
THERMOSTATS
(Starting Serial No. G0571001)**



**MOTORS, PULLEYS, BELTS, MOTOR BRACKETS,
AND FUSE**
(Starting Serial No. G0571001)

ITEM NO.	PART NO.	DESCRIPTION	ITEM NO.	PART NO.	DESCRIPTION
1	G143529	MOTOR	24	G217893	TIGHTENER SHOE
	G109801	OVERLOAD PROTECTOR	25	G230706	TIGHTENER BRACKET
2	G200766	WASH MOTOR PULLEY	26	G146407	SCREW
3	G128124	KEY	27	G149708	LOCKWASHER
4	G111278	WASHER	28	G149518	WASHER
5	G146399	SCREW	29	G150656	NUT
6	G239434	WASH MOTOR BRACKET	30	G122952	FUSE HOLDER AND RESISTOR
7	G239392	MOTOR BRACKET SHAFT		G137661	FUSE HOLDER CAP
8	G132555	WASHER	31	G137653	FUSE
9	G157354	SCREW	32	G155457	TERMINAL
10	G149419	WASHER	33	G155275	END COVER
11	G149682	LOCKWASHER	34	G155754	CLAMP
12	G150235	NUT	35	G176248	GROUND LUG
13	G200782	SLEEVE	36	G146282	SCREW
14	G139261	PLUG	37	G149724	LOCKWASHER
15	G139279	PLUG	38	G150177	NUT
16	G211920	MOTOR SHIELD	39	G139683	BUSHING
17	G143503	MOTOR	40	G140434	CLAMP
	G109801	OVERLOAD PROTECTOR	41	G140426	CLAMP
18	G201756	EXTRACT MOTOR PULLEY	42	G149476	WASHER
19	G128116	KEY	43	G146084	SCREW
20	G146381	SCREW	44	G129296	BELT
21	G239400	MOTOR BRACKET			
22	G239384	MOTOR BRACKET SHAFT			
23	G213173	MOTOR SHIELD			

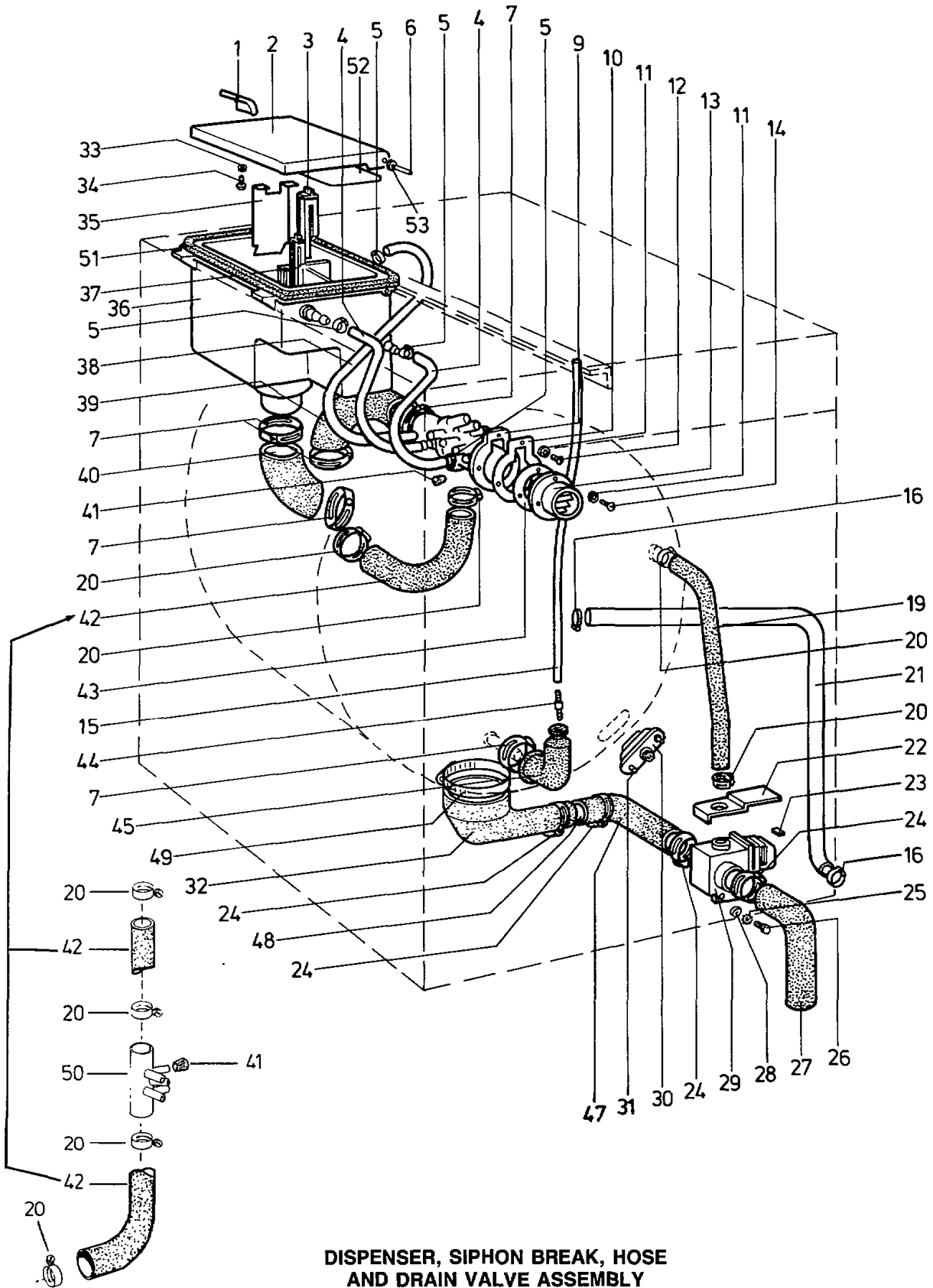
**MOTORS, PULLEYS, BELTS, MOTOR BRACKETS,
AND FUSE
(Starting Serial No. G0571001)**



**DISPENSER, SIPHON BREAK, HOSES
 AND DRAIN VALVE ASSEMBLY
 (Through Serial No. G0571000)**

ITEM NO.	PART NO.	DESCRIPTION	ITEM NO.	PART NO.	DESCRIPTION
1	G116806	KNOB		G166561	DRAIN BODY
2	G116798	DISPENSERS LID		G166553	MOTOR FIXING PLATE
3	G155077	BLEACH INTAKE TUBE		G166611	SCREW
*4	G163592	BLEACH DISPENSER HOSE		G166595	SCREW
5	G155150	CLAMP		G166603	SCREW
6	G116822	PIN		G166587	DIAPHRAGM SHAFT
7	G132290	CLAMP		G166629	WASHER
8	G156687	CAP	30	G121962	HEATER INLET LID
9	G153288	SIPHON BREAK	31	G121970	LOCKING PART
10	G156208	GASKET	32	G163204	DRAIN HOSE
11	G149476	WASHER	33	G149328	WASHER
12	G146084	SCREW	34	G144832	SCREW
13	G153270	GRID	35	G116814	SEPARATOR
14	G146092	SCREW	*36	G153502	DISPENSER
** *15	G200170	PRESSURE HOSE	37	G155085	SOFTENER TUBE
16	G156109	CLAMP	* *38	G163584	WATER INLET HOSE
19	G122705	OVERFLOW HOSE	39	G163162	INLET HOSE
20	G132282	CLAMP	40	G163154	INLET HOSE
21	G122697	HOSE	41	G156679	CAP
22	G212795	COVER	42	G212803	VENT HOSE
23	G159376	INSULATOR	43	G153262	GASKET
24	G132340	CLAMP	44	G120956	CONNECTOR
25	G149716	WASHER	45	G120964	PRESSURE BULB
26	G146233	SCREW	47	G177840	LID PLATE
27	G163253	DRAIN ELBOW	48	G246298	GASKET
28	G149526	WASHER	49	G246306	WASHER
29	G163212	DRAIN VALVE ASSEMBLY	50	G249268	INJECTOR ASSEMBLY (started with Serial No. 570001)
	G159756	MOTOR AND GEAR-BOX			
	G159749	OPERATING SPRING	*	G158626	COMPLETE DISPENSER AND LID
	G163394	V-SEAL	**	G128215	BLEACH DISPENSER HOSE (Bulk- order by the foot)
			** *	G128199	PRESSURE HOSE (Bulk- order by the foot)

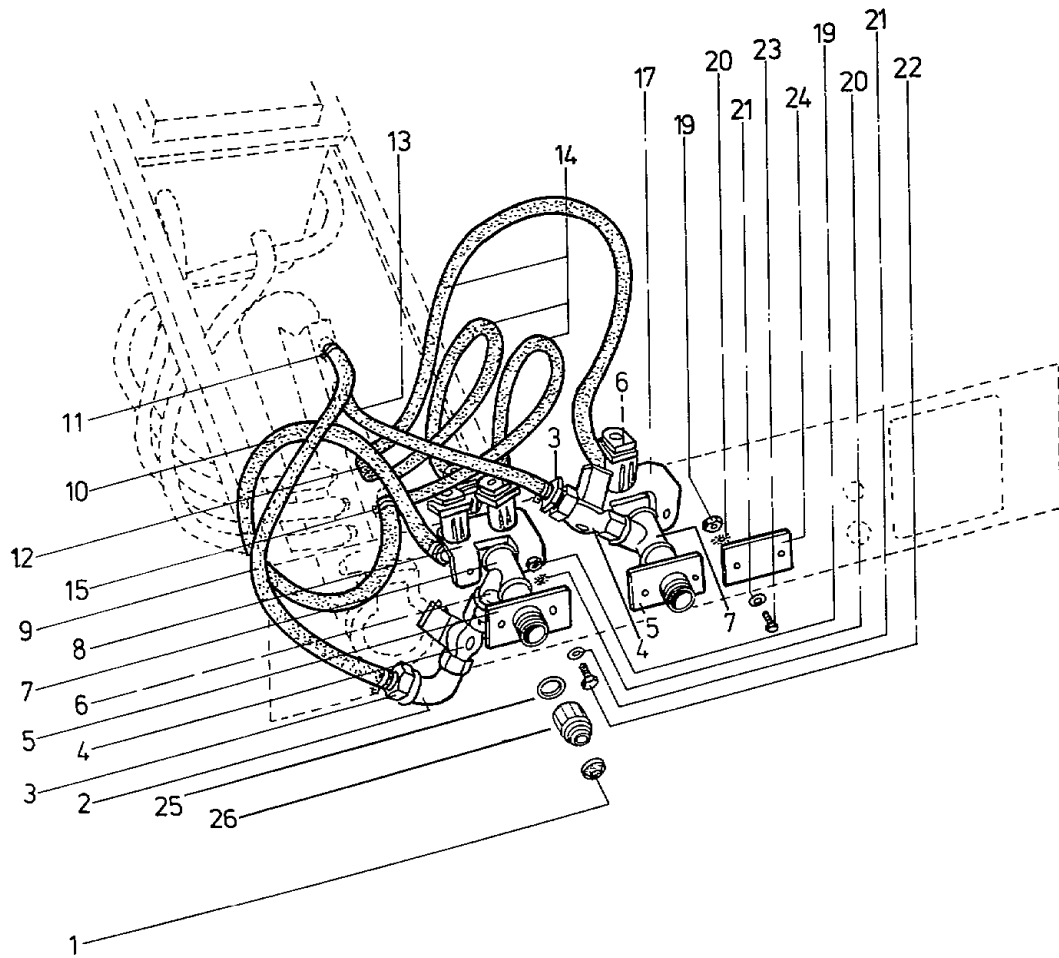
**DISPENSER, SIPHON BREAK, HOSE
AND DRAIN VALVE ASSEMBLY
(Starting Serial No. G0571000)**



**DISPENSER, SIPHON BREAK, HOSE
AND DRAIN VALVE ASSEMBLY**
(Starting Serial No. G0571001)

ITEM NO.	PART NO.	DESCRIPTION	ITEM NO.	PART NO.	DESCRIPTION
1	G116806	KNOB	30	G121962	HEATER INLET LID
2	G116798	DISPENSERS LID	31	G121970	LOCKING PART
3	G155077	BLEACH INTAKE TUBE	32	G253492	DRAIN HOSE
* 4	G163592	BLEACH DISPENSER HOSE	33	G149328	WASHER
5	G155150	CLAMP			
6	G116822	PIN	34	G144832	SCREW
7	G132290	CLAMP	35	G116814	SEPARATOR
9	G153288	SIPHON BREAK	* 36	G153502	DISPENSER
10	G156208	GASKET	37	G155085	SOFTNER TUBE
11	G149476	WASHER	* * 38	G163584	WATER INLET HOSE
12	G146084	SCREW	39	G163162	INLET HOSE
13	G153270	GRID	40	G163154	INLET HOSE
14	G146092	SCREW	41	G156679	CAP
* * * 15	G200170	PRESSURE HOSE	42	G212803	VENT HOSE
16	G156109	CLAMP	43	G153262	GASKET
19	G122705	OVERFLOW HOSE	44	G120956	CONNECTOR
20	G132282	CLAMP	45	G120964	PRESSURE BULB
21	G122697	HOSE	47	G250647	DRAIN HOSE
22	G212795	COVER	48	G213678	DRAIN HOSE
23	G159376	INSULATOR	49	G155143	CLAMP
24	G132340	CLAMP	50	G249268	INJECTOR ASSEMBLY
25	G149716	LOCKWASHER	51	G246298	DISPENSERS GASKET
26	G146233	SCREW	52	G177840	LID PLATE
27	G163253	DRAIN ELBOW	53	G246306	WASHER
28	G149526	WASHER	*	G158626	COMPLETE DISPENSER AND LID
29	G163212	DRAIN VALVE ASSEMBLY	* *	G128215	BLEACH DISPENSER HOSE (Bulk-order by the foot)
	G159756	MOTOR AND GEAR BOX	* * *	G128199	PRESSURE HOSE (Bulk-order by the foot)
	G159749	OPERATING SPRING			
	G163394	V-SEAL			
	G166561	DRAIN BODY			
	G166553	MOTOR FIXING PLATE			
	G166611	SCREW			
	G166595	SCREW			
	G166603	SCREW			
	G166587	DIAPHRAGM SHAFT			
	G166629	WASHER			

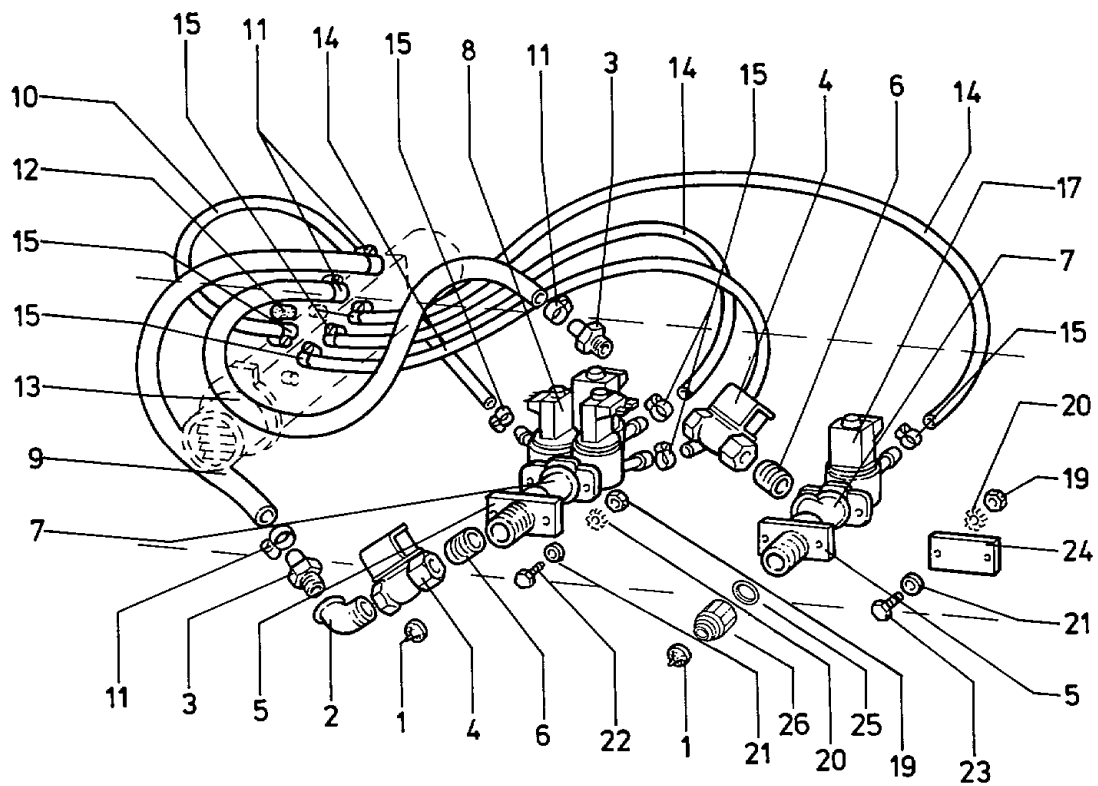
**DISPENSER, SIPHON BREAK, HOSES
AND DRAIN VALVE ASSEMBLY
(Starting Serial No. G0571001)**



INLET VALVE AND HOSES
 (Through Serial No. G0571000)

ITEM NO.	PART NO.	DESCRIPTION	ITEM NO.	PART NO.	DESCRIPTION
1	G159996	STRAINER		G142786	COIL ONLY
2	G129502	ELBOW		G160002	DIAPHRAGM ONLY
3	G160259	NUT	19	G150227	NUT
4	G116277	INLET VALVE (COLD)	20	G149716	WASHER
	G142778	COIL ONLY	21	G149526	WASHER
	G108910	DIAPHRAGM ONLY	22	G146233	SCREW
5	G116830	BRACKET	23	G146308	SCREW
6	G130005	SLEEVE	24	G122713	WATER INLET COVER
7	G129569	"T" FITTING	25	G114348	GASKET
8	G179036	3-TRACK VALVE	26	G234971	ADAPTER
	G142786	COIL ONLY	*	G128215	INLET HOSE (Bulk-order by the foot)
	G160002	DIAPHRAGM ONLY	* *	G156638	INLET HOSE (Bulk-order by the foot)
** 9	G240937	INLET HOSE			
* 10	G116608	HOSE			
11	G156109	HOSE CLAMP			
12	G156687	END-PIECE			
** 13	G241067	HOSE			
* 14	G158964	HOSE			
15	G155150	HOSE CLAMP			
17	G116285	1-TRACK VALVE (HOT)			

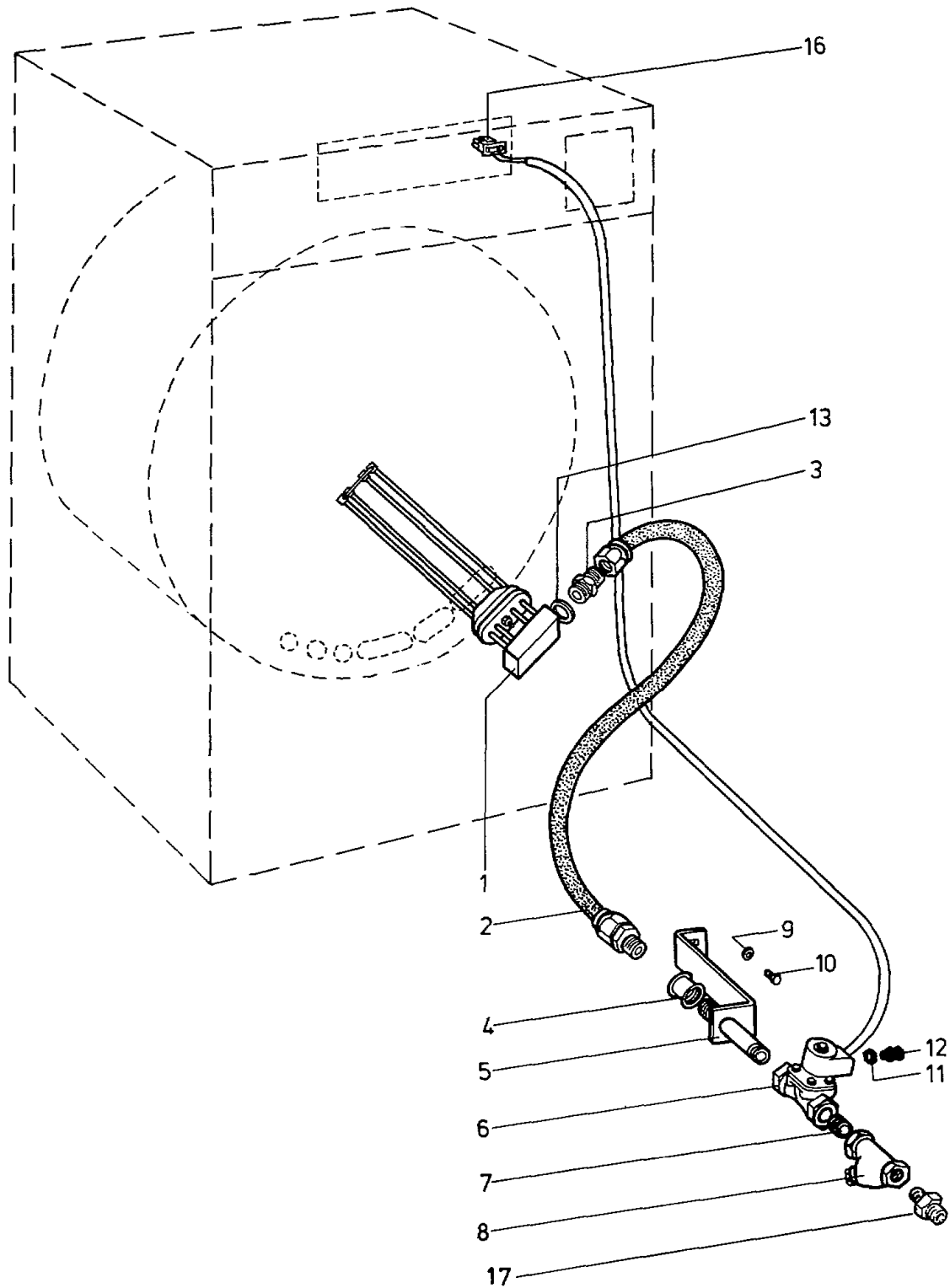
INLET VALVE AND HOSES
(Through Serial No. G0571000)



INLET VALVE AND HOSES
 (Starting Serial No. G0571001)

ITEM NO.	PART NO.	DESCRIPTION	ITEM NO.	PART NO.	DESCRIPTION
1	G159996	STRAINER	15	G155150	HOSE CLAMP
2	G129502	ELBOW	17	G129338	1-TRACK VALVE (HOT)
3	G160259	NUT	19	G150227	NUT
4	G116277	INLET VALVE (COLD)	20	G149716	LOCKWASHER
	G142778	COIL ONLY	21	G149526	WASHER
	G108910	DIAPHRAGM ONLY			
5	G116830	BRACKET	22	G146233	SCREW
6	G130005	SLEEVE	23	G146308	SCREW
7	G129569	"T" FITTING	24	G122713	WATER INLET COVER
8	G253542	3-TRACK VALVE	25	G114348	GASKET
* * 9	G240937	INLET HOSE	26	G234971	ADAPTER
*10	G116608	HOSE	*	G128215	INLET HOSE (Bulk-order by the foot)
11	G156109	HOSE CLAMP	* *	G156638	INLET HOSE (Bulk-order by the foot)
12	G156687	END-PIECE			
* *13	G241067	HOSE			
*14	G158964	HOSE			

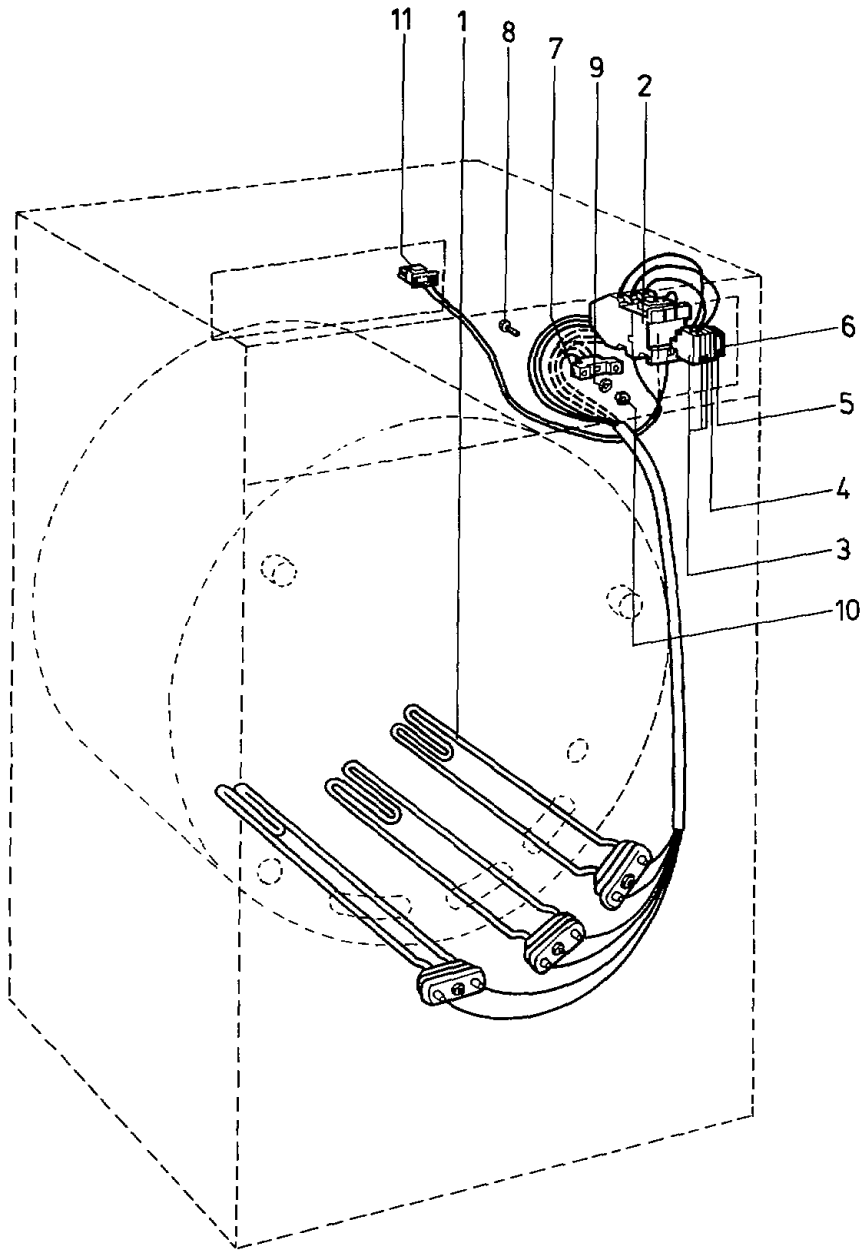
**INLET VALVE AND HOSES
(Starting Serial No. G0571001)**



STEAM INLET VALVE AND FITTINGS
 (Starting Serial No. G0571001)

ITEM NO.	PART NO.	DESCRIPTION	ITEM NO.	PART NO.	DESCRIPTION
	G798553	STEAM HEATING KIT	8	G133728	STEAM TRAP
1	G163345	STEAM HEATER	9	G149526	WASHER
2	G162305	STEAM INLET PRESSURE HOSE	10	G146233	SCREW
3	G156216	NIPPLE	11	G140228	NUT
4	G129759	STEAM INLET JOINTING	12	G140095	STRAIN RELIEF
5	G163337	STEAM PIPE AND BRACKET	13	G109777	COPPER GASKET
6	G162784	INLET VALVE	16	G139394	TERMINAL BLOCK
	G159772	COIL	17	G251355	NIPPLE
	G162792	DIAPHRAGM			
7	G129999	GASKET			

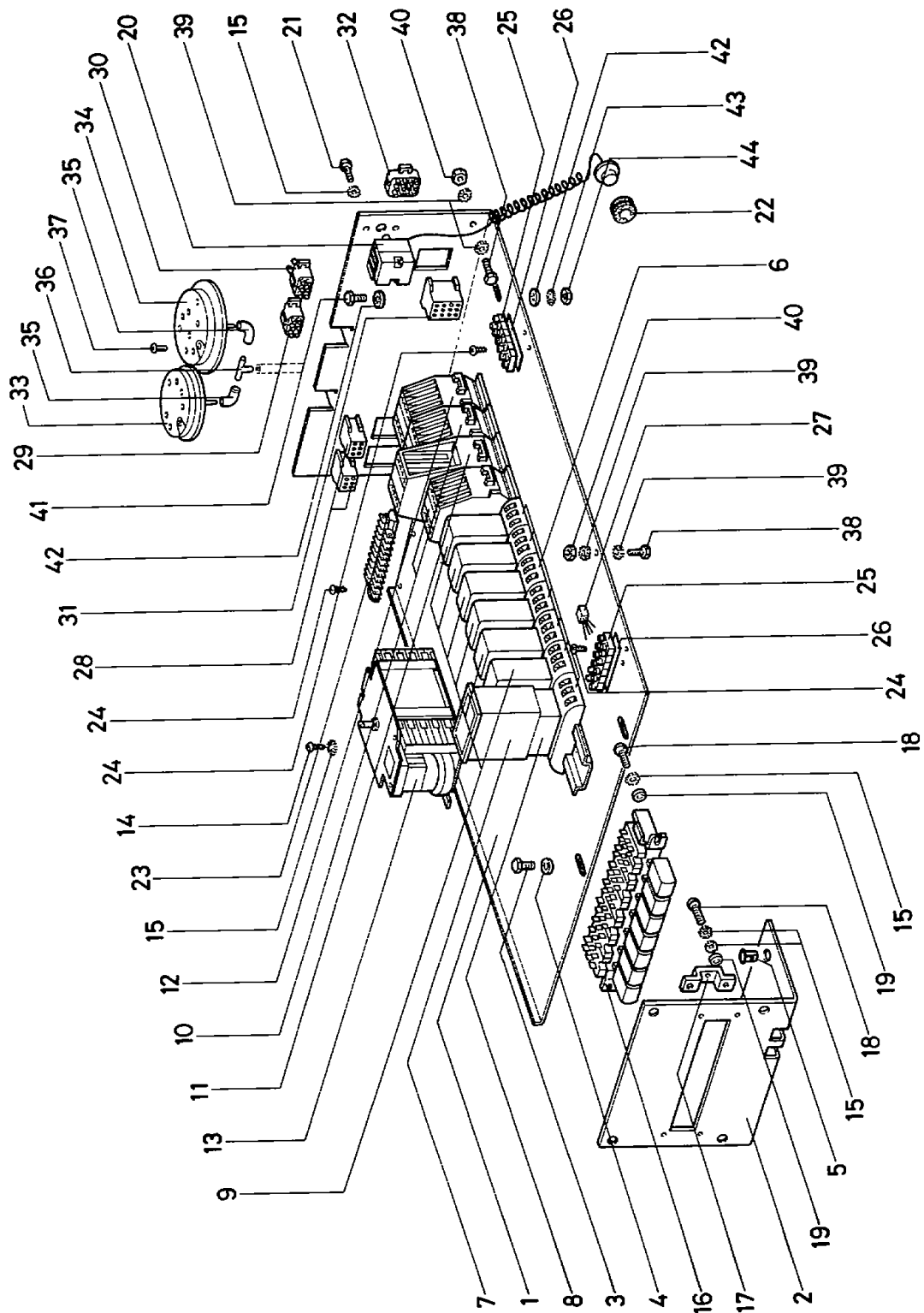
**STEAM INLET VALVE AND FITTINGS
(Starting Serial No. G0571001)**



ELECTRIC HEATING KIT
(Starting Serial No. G0571001)

ITEM NO.	PART NO.	DESCRIPTION	ITEM NO.	PART NO.	DESCRIPTION
	G798579	ELECTRIC HEATING KIT	9	G149484	WASHER
1	G178764	HEATER	10	G149906	SCREW
2	G136051	CONTACTOR	11	G139394	PLUG
	G108407	COIL ONLY			
3	G163360	TERMINAL BLOCK			
4	G163378	END COVER			
5	G155465	TERMINAL			
6	G155283	END COVER			
7	G142380	TERMINAL BLOCK			
8	G146043	SCREW			

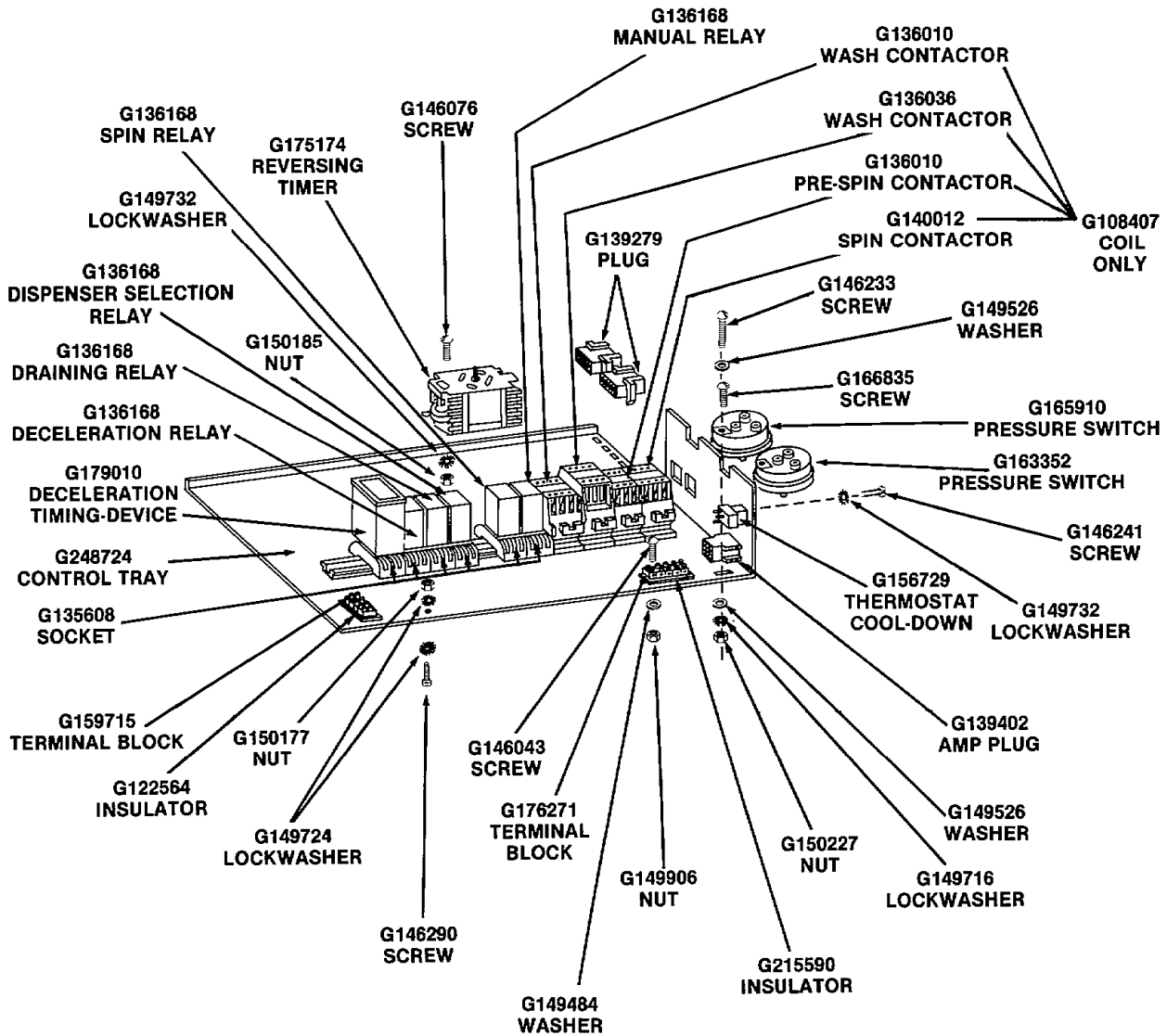
ELECTRIC HEATING KIT
(Starting Serial No. G0571001)



CONTROL TRAY AND CONTROLS
 (Starting Serial No. G0571001)

ITEM NO.	PART NO.	DESCRIPTION	ITEM NO.	PART NO.	DESCRIPTION
1	G248724	CONTROL TRAY	21	G146241	SCREW
2	G201392	CONTROL PLATE	22	G157198	GROMMET
3	G146233	SCREW	23	G135574	TERMINAL BLOCK
4	G149526	WASHER	24	G129007	SCREW
5	G128934	NUT	25	G146951	TERMINAL BLOCK
6	G135608	SOCKET	26	G215590	INSULATOR
7	G179010	DECELERATION TIMING DEVICE	27	G110023	THERMOSTAT COOL DOWN
8	G141804	TIMING UNIT	28	G139444	PLUG
9	G136168	DECELERATION RELAY	29	G139394	PLUG
10	G136010	PRE-SPIN CONTACTOR	30	G250878	PLUG
	G108407	COIL ONLY	31	G139402	PLUG
11	G136036	WASH CONTACTOR	32	G139410	PLUG
	G108407	COIL ONLY	33	G160218	PRESSURE SWITCH
12	G140012	SPIN CONTACTOR	34	G163352	PRESSURE SWITCH
	G108407	COIL ONLY	35	G122408	HOSE
13	G175174	REVERSING TIMER	36	G113357	"T" FITTING
14	G107318	SCREW	37	G166835	SCREW
15	G149732	LOCKWASHER	38	G146290	SCREW
16	G140004	SELECTOR SWITCH	39	G149724	LOCKWASHER
	G162818	GRAY KEY	40	G150177	NUT
	G162826	RED KEY	41	G146233	SCREW
17	G121582	SELECTOR SWITCH BRACKET	42	G149526	WASHER
18	G146076	SCREW	43	G149716	LOCKWASHER
19	G149476	WASHER	44	G150227	NUT
20	G117911	THERMOSTAT			

CONTROL TRAY AND CONTROLS
(Starting Serial No. G0571001)



CONTROL TRAY AND CONTROLS
 (Through Serial No. G0571000)

SECTION II

Service Procedures

To aid in the servicing of the washer-extractor, refer to the parts section for the assembly sequence.

NOTE: When reference to directions (right or left) is made in this manual, it is from the operator's position facing the front of the washer.

IMPORTANT: Metric tools are required for servicing the washer.

WARNING

Disconnect electrical power and close water supply valves before servicing the washer.

1. CABINET TOP

- a. Remove the two screws holding the cabinet top rear corner tabs to the rear cross channel of the washer.
- b. Lift up on the back portion of the cabinet top and slide the top forward to disengage the cabinet top from the hold down tabs on the top flange of the front panel.
- c. Lift the cabinet top off the washer.

2. CONTROL PANEL

- a. Remove the two screws holding the cabinet top rear corner tabs to the rear cross channel of the washer.
- b. Lift up on the back portion of the cabinet top and slide the top forward to disengage the cabinet top from the hold down tabs on the top flange of the front panel.
- c. Lift the cabinet top off the washer.
- d. Loosen setscrew holding control knob to thermostat(s) and remove knob.
- e. Remove screws holding thermostat(s) to control panel.

WARNING

Do not kink or otherwise damage the capillary tube when removing the thermostat(s).

- e. Remove the six screws holding the control panel to the cabinet.

- f. Pull control panel forward exposing the door open switch and run light.
- g. Using a Tru-Arc pliers, remove the Tru-Arc ring attaching the on light to the control panel.
- h. Unscrew the lampholder from the white barrel of the door open light and disconnect the two wires from the door open light.

IMPORTANT: Before disconnecting wires from switch light, mark the terminal connections and the wire numbers so the wires can be reinstalled correctly.

3. SELECTOR SWITCHES

- a. Remove the two screws holding the cabinet top rear corner tabs to the rear cross channel of the washer.
- b. Lift up on the back portion of the cabinet top and slide the top forward to disengage the cabinet top from the hold down tabs on the top flange of the front panel.
- c. Lift the cabinet top off the washer.
- d. Remove the two screws holding the selector switch assembly to the U-bracket mounted to the backside of the control plate.

IMPORTANT: When replacing the switch assembly, do a wire-for-wire exchange, or write down all of the wire terminal connections before removing any wires. If you have a problem, refer to the wiring diagram on the underside of the cabinet top.

4. CARD READER

- a. Remove the two screws holding the cabinet top rear corner tabs to the rear cross channel of the washer.
- b. Lift up on the back portion of the cabinet top and slide the top forward to disengage the cabinet top from the hold down tabs on the top flange of the front panel.
- c. Lift the cabinet top off the washer.
- d. Remove the four screws, washers and nuts holding the card reader to the washer front panel.
- e. Disconnect wires from card reader.

IMPORTANT: Before removing wires from the card reader, mark the terminal connection and the wire number so the wires can be reinstalled correctly.

- f. Carefully remove the card reader out through the opening in the front panel.

5. REVERSING TIMER (Card Control Models)

- a. Remove the two screws holding the cabinet top rear corner tabs to the rear cross channel of the washer.
- b. Lift up on the back portion of the cabinet top and slide the top forward to disengage the cabinet top from the hold down tabs on the top flange of the front panel.
- c. Lift the cabinet top off the washer.
- d. Remove the two screws, lockwashers and plain washers holding the reversing timer to the mounting bracket.
- e. Disconnect wires from reversing timer.

IMPORTANT: Before disconnecting wires from the timer, write down the timer terminal connection and the wire numbers so the timer can be rewired correctly.

6. CONTACTORS

- a. Remove the two screws holding the cabinet top rear corner tabs to the rear cross channel of the washer.
- b. Lift up on the back portion of the cabinet top and slide the top forward to disengage the cabinet top from the hold down tabs on the top flange of the front panel.
- c. Lift the cabinet top off the washer.
- d. Use a small flat blade screwdriver and move the side tab out (located on left side of the contactor) and carefully remove contactor off rail.
- e. Disconnect wires from contactor.

IMPORTANT: Before removing wires from contactor, mark the terminal connectors and the wire number so the wires can be reinstalled correctly.

7. RELAYS

- a. Remove the two screws holding the cabinet top rear corner tabs to the rear cross channel of the washer.
- b. Lift up on the back portion of the cabinet top and slide the top forward to disengage the cabinet top from the hold down tabs on the top flange of the front panel.
- c. Lift the cabinet top off the washer.
- d. Remove relay by pulling straight up and out of the socket.

NOTE: When installing the relay, be sure the tab, located on the center spindle of the relay, lines up with the notch in the base.

8. DECELERATION TIMING DEVICE

- a. Remove the two screws holding the cabinet top rear corner tabs to the rear cross channel of the washer.

- b. Lift up on the back portion of the cabinet top and slide the top forward to disengage the cabinet top from the hold down tabs on the top flange of the front panel.
- c. Lift the cabinet top off the washer.
- d. Remove the timing device by pulling straight up and out of the socket.

NOTE: When installing the timing device, be sure the tab, located on the center spindle, lines up with the notch in the base.

9. PRESSURE SWITCHES

- a. Remove the two screws holding the cabinet top rear corner tabs to the rear cross channel of the washer.
- b. Lift up on the back portion of the cabinet top and slide the top forward to disengage the cabinet top from the hold down tabs on the top flange of the front panel.
- c. Lift the cabinet top off the washer.
- d. Remove the screw and washer holding the pressure switch to rear tab on control mounting tray.
- e. Disconnect the pressure hose from the pressure switch.

IMPORTANT: Before disconnecting wires from the pressure switch, write down the switch terminal connections and the wire numbers so the switch can be rewired correctly.

- f. Tape pressure hose to top side of outer tub to prevent hose from falling to washer base.

IMPORTANT: When installing the pressure hose, blow air through the pressure hose before connecting the hose to the pressure switch to remove any condensation that may have accumulated in the hose.

10. INLET VALVE (Hot Water-Two Track Valve)

NOTE: Turn off water supply to the washer.

- a. Remove the two screws holding the cabinet top rear corner tabs to the rear cross channel of the washer.
- b. Lift up on the back portion of the cabinet top and slide the top forward to disengage the cabinet top from the hold down tabs on the top flange of the front panel.
- c. Lift the cabinet top off the washer.
- d. Remove the hot water inlet hose from the brass adapter at the rear of the washer.
- e. Remove the brass adapter from the hot water inlet valve.

IMPORTANT: Before removing wires from solenoids, mark the terminal connections and the wire number so the wires can be reinstalled correctly.

- f. Mark the internal hoses so they can be reinstalled on the correct valve outlet.
- g. Loosen hose clamps and remove the hoses from the valve.
- h. Remove screws holding inlet valve to the rear cross channel and remove valve from inside of washer.

SOLENOID REMOVAL

- a. Loosen the five screws holding solenoids and mounting plate to inlet valve body. **DO NOT** remove the screws.
- b. Push coils toward rear of mounting plate and lift up. Coils will come off plunger assembly.

11. INLET VALVE (Cold Water-Single Track Valve)

NOTE: Turn off the water supply to the washer.

- a. Remove the two screws holding the cabinet top rear corner tabs to the rear cross channel of the washer.
- b. Lift up on the back portion of the cabinet top and slide the top forward to disengage the cabinet top from the hold down tabs on the top flange of the front panel.
- c. Lift the cabinet top off the washer.
- d. Remove the cold water inlet hose from the brass adapter at the rear of the washer.
- e. Remove the brass adapter from the inlet valve.

IMPORTANT: Before removing wires from solenoid, mark the terminal connection and the wire number so the wires can be reinstalled correctly.

- f. Remove the ground wire from the inlet valve.

CAUTION

Whenever ground wires are removed, they must be reconnected to insure the washer is properly grounded.

SOLENOID REMOVAL

- a. Loosen the five screws holding solenoids and mounting plate to inlet valve body. **DO NOT** remove the screws.
- b. Push coils toward rear of mounting plate and lift up. Coils will come off plunger assembly.

12. Three Track Valve

NOTE: Turn off water supply to the washer.

- a. Remove the two screws holding the cabinet top rear corner tabs to the rear cross channel of the washer.

- b. Lift up on the back portion of the cabinet top and slide the top forward to disengage the cabinet top from the hold down tabs on the top flange of the front panel.
- c. Lift the cabinet top off the washer.
- d. Unscrew the three track valve from the T-fitting.
- e. Loosen the clamps holding the hoses to the three track valve and remove the valve.

SOLENOID REMOVAL

- a. Loosen the five screws holding solenoids and mounting plate to inlet valve body. **DO NOT** remove the screws.
- b. Push coils toward rear of mounting plate and lift up. Coils will come off plunger assembly.

13. DISPENSER

- a. Remove the two screws holding the cabinet top rear corner tabs to the rear cross channel of the washer.
- b. Lift up on the back portion of the cabinet top and slide the top forward to disengage the cabinet top from the hold down tabs on the top flange of the front panel.
- c. Lift the cabinet top off the washer.
- d. Loosen the clamps holding the hoses to the dispenser and remove the dispenser.

NOTE: Mark all hoses and their appropriate connection so they can be reinstalled correctly. When reinstalling hoses to the dispenser, **DO NOT** overtighten the hose clamps. If you do, water will shoot out of the dispenser lid.

14. DOOR OPEN LIGHT

- a. Remove the two screws holding the cabinet top rear corner tabs to the rear cross channel of the washer.
- b. Lift up on the back portion of the cabinet top and slide the top forward to disengage the cabinet top from the hold down tabs on the top flange of the front panel.
- c. Lift the cabinet top off the washer.
- d. Disconnect wires from door open light.

NOTE: Before removing wires from the door open light, mark the terminal connection and the wire number so the wires can be reinstalled correctly.

- e. Unscrew the lampholder nut from the inside of the control panel and remove the door open light.

15. ON LIGHT

- a. Remove the two screws holding the cabinet top rear corner tabs to the rear cross channel of the washer.

- b. Lift up on the back portion of the cabinet top and slide the top forward to disengage the cabinet top from the hold down tabs on the top flange of the front panel.
- c. Lift the cabinet top off the washer.
- e. Disconnect wires from the on light.

NOTE: Before removing wires from the on light, mark the terminal connection and the wire number so the wires can be reinstalled correctly.

- f. Using a Tru-Arc pliers, remove the Tru-Arc ring holding the on light to the control panel.

16. SIPHON BREAK

- a. Remove the two screws holding the cabinet top rear corner tabs to the rear cross channel of the washer.
- b. Lift up on the back portion of the cabinet top and slide the top forward to disengage the cabinet top from the hold down tabs on the top flange of the front panel.
- c. Lift the cabinet top off the washer.

NOTE: Label all hoses and their appropriate nipple on the siphon break before removing the hoses.

- d. Loosen hose clamps and carefully remove all hoses from the siphon break.

CAUTION

Use a hair dryer or similar heating device to heat the ends of the hoses where they attach to the siphon break. This will help loosen the hoses and prevent the nipples on the siphon break from breaking off when the hoses are removed.

CAUTION

Pull hoses straight off the nipples. If you do not, the nipples may break off the siphon break.

- e. Remove the four screws holding the grid and gasket to the rear channel and remove the grid and gasket.
- f. Remove the screw holding the siphon break to the rear channel and remove the siphon break and gasket from the rear channel.

17. LOADING DOOR

- a. Through serial number G057100.

1. Install the red screw (supplied with the washer) into the hole in the bottom of the door safety box.
2. Thread the screw all the way in to unlock the door.

IMPORTANT: Remove the red screw once the door is open.

3. Unscrew the two round plugs from the front of the door bracket using the special plug key (supplied with the washer).
4. Loosen the locknut from each setscrew (located inside the door bracket) and remove the two setscrews.
5. Remove the large nut holding the loading door to the door bracket. Unthread the complete door assembly from the large bolt on the door bracket.

b. Starting with serial number G0571001.

1. Insert the flat blade of a small screwdriver up through the left side of the slot located on the bottom side of the door lock arm.
2. Move the locking mechanism (within the arm) to the right by sliding or pivoting the screwdriver blade to the right, and at the same time move the door handle down to unlock the door.
3. Unscrew the two round plugs from the front of the door bracket using the special plug key (supplied with the washer).
4. Loosen the locknut from each setscrew (located inside the door bracket) and remove the setscrews.
5. Remove the large nut holding the loading door to the door bracket. Unthread the complete door assembly from the large bolt on the door bracket.

18. DOOR LOCK ASSEMBLY

a. Through serial number G057100

1. Remove the screws holding the box cover trim to the safety box.
2. Remove the nut holding the safety box cover to the safety box.
3. Remove screws holding the solenoid to the safety box.
4. Remove screws holding switch to switch bracket.

IMPORTANT: Before disconnecting the wires from the door lock assembly, write down the terminal connections and the wire number so the door lock assembly can be rewired correctly.

b. Starting with serial number G0571001

1. Insert the flat blade of a small screwdriver up through the left side of the slot located on the bottom side of the door lock arm.
2. Move the locking mechanism (within the arm) to the right by sliding or pivoting the screwdriver blade to the right, and at the same time move the door handle down to unlock the door.
3. Unscrew the two round plugs from the front of the door bracket using the special plug key (supplied with the washer).
4. Loosen the locknut from each setscrew (located inside the door bracket) and remove the setscrews.
5. Remove the large nut holding the loading door to the door bracket. Unthread the complete door assembly from the large bolt on the door bracket.
6. Remove the six screws holding the safety lock coil and mounting bracket to the door bracket.
7. Disconnect the wires from the safety lock coil and switch.

IMPORTANT: Before disconnecting the wires from the safety lock coil and switch, write down the terminal connections and the wire number so the switch and safety lock coil can be rewired correctly.

19. DOOR SAFETY SWITCH

IMPORTANT: Before disconnecting wires from switch terminals, write down the switch terminal connections and the wire numbers so switch can be rewired correctly.

20. DOOR GASKET

- a. Peel the door gasket from the door.

DOOR GASKET INSTALLATION

- b. Tuck the new gasket into the door assembly.

IMPORTANT: When installing the door gasket, the seam **MUST** be positioned in either the three o'clock or nine o'clock position. If it is not in either of these positions the gasket will leak.

21. OUTER TUB FRONT PANEL

- a. Remove the two screws holding the cabinet top rear corner tabs to the rear cross channel of the washer.
- b. Lift up on the back portion of the cabinet top and slide the top forward to disengage the cabinet top from the hold down tabs on the top flange of the front panel.

- c. Lift the cabinet top off the washer.
- d. Disconnect the four wires from the door switch mechanism from the terminal block at the back of the control panel.

IMPORTANT: Before disconnecting wires from the door switch, mark the terminal connections and the wire numbers so the wires can be reinstalled correctly.

NOTE: Wire connection from the right to the left is "L1" first position, "56" second position, "54" third position and "207" fourth position.

- e. Disconnect the green ground wire from the door switch.

CAUTION

Whenever ground wires are removed during servicing, those ground wires must be reconnected to insure that the washer is properly grounded.

- f. Remove the two screws holding the nameplate cover to the front of the washer and remove the nameplate cover.
- g. With nameplate removed, mark door panel at a position on the front panel to assist with installation of door panel.
- h. Pull the door lock wires out through the opening in the front panel.
- i. Remove the bolt, washers and nut holding the clamp ring to the front of the washer and remove the clamp ring.
- j. While supporting the outer tub front panel and door assembly, carefully remove the gasket.
- k. Carefully remove the outer tub front panel and door assembly from the washer.

TO INSTALL THE OUTER TUB FRONT PANEL

IMPORTANT: When reinstalling outer tub front panel and loading door, line up the two panels where they were marked during disassembly, see step "g", or use a tape measure to measure the distance from the top of the door arm to the top of the control panel. With the door arm horizontal to the control panel, the distance should be 25-3/4 inches from the top of each end of the door arm to the top of the control panel.

WARNING

Reinstallation of the outer tub front panel **MUST** be done with two people.

- a. Position and support the outer tub front panel (with door attached) to the front of the outer tub. Use spacers approximately the same thickness as the center rib of the clamp ring gasket. Place spacers at the 4 o'clock and 8 o'clock positions between the outer tub lip and the outer tub front panel. Clamp into position using clamping pliers.

Starting at the 12 o'clock position or where door panel and front panel were marked during disassembly, install the clamp ring gasket. The gasket has two grooves. One groove goes over the outer tub lip and the other goes over the outer tub front panel lip. After installing approximately six inches of gasket, clamp the gasket, outer tub and outer tub front panel with a clamping pliers at the starting point. Continue to install the gasket until you are at the clamping pliers and spacer near the 4 o'clock position. Once again clamp the gasket, outer tub and outer tub front panel with a clamping pliers before removing clamping pliers and spacer at the 4 o'clock position. Proceed in this manner until the gasket is completely installed.

While one person holds the outer tub front panel in position, the second person can remove the clamping pliers and install the clamp ring.

- b. With the gasket in place, start at the top and place the clamp ring around the clamp ring gasket. The tabs on the clamp ring should be one quarter of the way into the bracket on the front panel. Do not tighten the clamp ring at this time.
- c. Begin tapping the clamp ring with a rubber or vinyl mallet all the way around to pull the two sides of the clamp ring together.
- d. Begin tightening the clamp ring using the bolt, washers and nut. Continue to tap around the outer edge of the clamp ring as the bolt is being tightened to insure a water tight seal.
- e. Route the four wires and the ground wire from the door switch mechanism through the hole in the front panel and up into the control tray.

NOTE: Be sure the insulating tube is in the hole in the front panel to protect the wires.

- f. Reconnect the wires to the terminal block.

NOTE: Wire connection from the right to the left is "L1" first position, "56" second position, "54" third position and "207" fourth position.

- g. Attach the nameplate housing to the washer with the two screws.
- h. Re-install cabinet top.

22. FRONT PANEL

- a. Remove the two screws holding the cabinet top rear corner tabs to the rear cross channel of the washer.
- b. Lift up on the back portion of the cabinet top and slide the top forward to disengage the cabinet top from the hold down tabs on the top flange of the front panel.
- c. Lift the cabinet top off the washer.
- d. Remove the eight screws holding the large control panel to the cabinet and remove the four screws holding the small control panel.
- e. Pull thermostat knobs off and remove two screws and two washers.
- f. Pull control panel forward exposing the door open switch and run light.
- g. Disconnect wires to on light and door open light.
- h. Remove selector switches.

NOTE: Before removing wires from the door open light and on light, mark the terminal connections and the wire numbers so the wires can be reinstalled correctly.

- i. Remove back panel, remove two belts from tumble motor (left hand motor if facing back of machine), and remove the thermo coupler from the thermometer at the rear tub head.
- j. Remove the two nuts and bracket holding the thermometer to the control panel and remove thermometer through front of control panel.
- k. Remove card reader, paragraph 4.
- l. Remove outer tub front panel, paragraph 21.
- m. Remove the large gasket from the front panel, paragraph 21.
- n. Remove six screws, lockwashers and nuts holding top and bottom edges of front panel to chassis and remove the front panel.

23. REAR PANEL

- a. Remove screws holding the rear panel to the cabinet and remove the rear panel.

24. BELTS

- a. Remove screws holding the rear panel to the cabinet and remove the rear panel.
- b. Use a piece of two-by-four or something similar for leverage to keep the motor from dropping while running the belts off the pulleys. Once the belts have been removed from the pulleys, lower the motors gradually. **DO NOT** let them drop or the motors could be damaged.

NOTE: If replacing spin belts, tumble belts must be removed first.

25. CYLINDER PULLEY ASSEMBLY

- a. Remove screws holding rear panel to cabinet and remove rear panel.
- b. Use a piece of two-by-four or something similar for leverage to keep the motor from dropping while running the belts off the pulleys. Once the belts have been removed from the pulleys, lower the motors gradually. **DO NOT** let them drop or you could damage the motors.

NOTE: Block cylinder pulley at rear of washer to keep cylinder from moving while removing pulley and bolt.

- d. Using a 22mm socket, remove the large bolt holding the pulley to the cylinder shaft and remove the lockwasher and washer.
- e. With the No. G171215 Bolt screwed into the No. G171462 Pulley Plate, attach the pulley plate to the tapped holes in the pulley hub with two bolts, No. G146530, washers, No. G149500, and nuts No. G150193. The washers, No. G149500, go between the nut and the pulley plate (see page 4 or 6). Use an 18mm wrench to turn the nuts tight against the pulley plate.
- f. Turn the large bolt clockwise to turn the pulley off the shaft.

PULLEY INSTALLATION

- a. Insert the No. G171264 Puller Allen Fitting into the G171439 Puller Bolt, and insert into the cylinder shaft approximately one inch.
- b. Insert the pulley key onto the shaft and start the pulley onto the shaft with a hammer.
- c. Insert the No. G171454 Handle into the No. G171447 Puller Nut and turn the drive nut clockwise to push the pulley onto the shaft.
- d. When the pulley is seated firmly onto the shaft, install the large washer, lockwasher and bolt into the shaft and tighten.

26. WASH BASKET CYLINDER AND SHAFT REMOVAL

- a. Remove the two screws holding the cabinet top rear corner tabs to the rear cross channel of the washer.
- b. Lift up on the back portion of the cabinet top and slide the top forward to disengage the cabinet top from the hold down tabs on the top flange of the front panel.
- c. Lift the cabinet top off the washer.
- d. Remove the outer tub front panel, with door attached, paragraph 21.
- e. Remove screws holding rear panel to cabinet and remove panel.
- f. Remove belts and cylinder pulley, paragraphs 24 and 25.
- g. Remove key, lock nut and lockwasher from shaft.

- h. Remove the three bolts and lockwashers holding the seal cover to the bearing housing and remove the cover. Remove all the grease from inside the seal cavity.
- i. Turn the No. G150193 Nuts onto the three No. G146563 Screws and attach the No. G171774 hub to the bearing housing. Once the bolts are tight, turn the No. G150193 Nuts tight against the hub (see page 4 or 6).
- j. Thread the No. G171215 Bolt into the housing through the hub.

NOTE: Block the cylinder at front of washer to keep it from rotating.

NOTE: The wash basket and cylinder are very heavy. Prepare a support in front of the machine that is level with the bottom of the wash basket on which the basket can be placed when it is removed from the front of the machine.

- k. Turn the G171215 bolt clockwise to push the cylinder and shaft out through the front of the washer. Carefully remove the cylinder and shaft assembly from the washer.

CYLINDER AND SHAFT DISASSEMBLY

- a. Remove the gland from the shaft.
- b. Remove the V-seal from the outside of the gland, and remove the O-rings and flat gasket from the shaft.
- c. Remove the cylinder coupler from the basket by removing the four nuts and washers from the studs attaching the coupler to the basket.

NOTE: The four nuts attaching the coupler to the basket are spot welded. Remove welds with a grinder before removing nuts and washers.

- d. Remove the shaft from the wash cylinder coupler by removing the locking tab and spanner nut located at the base of the shaft.

ASSEMBLY OF CYLINDER AND SHAFT

IMPORTANT: We recommend installing new "O" rings, "V" seal and flat gasket whenever cylinder and shaft assembly are removed. Lubricate inside of "O" rings before installing. Make sure new "O" rings are not cut or damaged and are in their normal (not inside out) position when in place. Apply a bead of sealant, such as Dow Corning Silastic 732-RTV or equivalent (these are clear silicone sealants), around the entire area where the gland and the flange on the shaft meet.

- a. Install new flat washer.
- b. Install new "O" rings on shaft. See **IMPORTANT** above.
- c. Install gland on shaft.
- d. Install new "V" seal.

- e. Place key in slot of shaft, then insert cylinder shaft into cylinder coupler.
- f. Install lockwasher and locking nut.

IMPORTANT: After locking nut has been tightened, bend at least two locking tabs on lockwasher into place on nut.

- g. Place the cylinder shaft and coupler over the rib rods protruding through the rear of cylinder. Secure coupler to cylinder using washers and nuts, then re-weld nuts.

27. BEARING HOUSING

a. Bearing Housing and Seal Housing Removal

1. Remove cylinder and shaft assembly, paragraph 26.
2. Using a 13mm socket, remove 16 double nuts holding plate to inside of outer tub.

IMPORTANT: Before removing nuts, lay a cloth over the drain housing so nuts and washers do not fall into the drain housing.

3. Pry the plate off the inside of the outer tub.
4. Remove the 12 nuts the bearing housing to the back of the chassis.
5. Remove pressure hoses from pressure bulbs and move hoses out of way.
6. Remove capillary tubes that are connected to thermostat out of the way.
7. Remove the two bolts holding each motor tension bracket to the bearing housing and remove the brackets.
8. With the help of at least one other person, pull bearing housing off the back of the chassis.

WARNING

To reduce the risk of personal injury, use Caution when removing the bearing housing from the rear of the washer as the bearing housing is very heavy.

NOTE: The two gaskets which contact the bearing housing and the cylinder coupler must be replaced whenever the wash basket and cylinder are removed. Clean front of bearing housing and cylinder coupler thoroughly before installing new gaskets.

b. Bearing Housing Disassembly

1. Insert No. G171397 Punch Bar into No. G171702 Bearing Punch and tighten the No. G144055 Allen Screw. Insert punch bar with bearing punch through center of front bearing and drive rear bearing out of housing.

2. Reverse the housing and place a nut on each of the six bearing housing studs to protect the threads.
3. Drop the No. G171710 Sleeve into the bearing housing cavity, making sure it is seated evenly. Drive the front bearing out of the housing with the punch bar and bearing punch.

NOTE: When replacing seals, we recommend installing new bearings also.

NOTE: When installing new seals, apply a retaining compound such as Loctite to the outside diameter of the seal to assure a water tight seal. Lubricate inside diameter of seal with No. 21814 Lubricant.

d. Assembly of bearing housing

NOTE: Apply a retaining compound (such as Loctite) to outside diameter of bearings before installing bearings into bearing housing.

1. Install front bearing first.
2. Thread No. G171504 Plate Handle into No. G171728 Bearing Seal Plate.
3. Install front bearing flat into bearing housing cavity. Place plate handle with bearing seal plate over bearing and seat bearing in housing by pounding on plate handle with a hammer.

e. Bearing Housing Installation

NOTE: The rear bearing is installed after the cylinder and shaft have been pulled through the front bearing and housing.

1. Insert seal housing onto the bearing housing assembly.
2. Place bearing assembly onto back of chassis, making sure the elbow and seal drain hose come out of the bottom of the assembly.
3. Secure the bearing housing to the chassis with the twelve nuts and tighten the nuts.
4. Place the seal plate over the eight bolts inside the outer tub and secure the seal plate with two nuts on each bolt.

f. Wash Basket Cylinder and Shaft Installation

1. Insert the wash basket and cylinder shaft assembly into the bearing housing from the front of the washer through the outer tub. Run the basket and shaft in as straight as possible to prevent damage to the seals.
2. Mount the No. G171774 Hub to the bearing housing with three No. G146563 Screws.

3. Insert the No. G171264 Puller Allen Fitting into the No. G171439 puller bolt.
4. Screw the No. G171447 Puller Nut onto the No. G171439 Puller Bolt.
5. Screw the puller bolt with the puller allen fitting attached into the shaft until the puller bolt locks in against the cylinder shaft.

NOTE: Block the cylinder at front of washer to prevent the cylinder from rotating while pulling cylinder and shaft into bearing housing.

6. Turn the No. G171447 Puller Nut clockwise to pull the cylinder shaft through the bearing housing to properly position the wash basket. Turn the puller nut until the basket is properly seated against the front bearing.
7. Loosen the puller nut and completely remove the puller bolt from the puller allen fitting.

g. Rear Bearing Installation

NOTE: Install rear bearing after bearing housing with front bearing is mounted to the chassis and wash basket cylinder and shaft assembly is installed.

1. Remove the No. G171774 Hub from the bearing housing. Repack the bearing housing with grease and install the spacer. Place the rear bearing onto the shaft and center the bearing over the opening in the bearing housing.
2. Place the No. G171774 Hub back onto the bearing housing, over the cylinder shaft.
3. Screw the No. G171439 Puller Bolt onto the puller allen fitting, then screw the puller allen fitting into the cylinder shaft.
4. Using the No. G171454 Handle, turn the puller nut up tight against the bearing housing. Turn the puller nut clockwise until the rear bearing is seated firmly in the bearing housing.
5. Remove the drive bolt and the puller allen fitting from the cylinder shaft.
6. Install lockwasher and locking nut on cylinder shaft and tighten nut.

IMPORTANT: After locking nut has been tightened, bend at least two locking tabs on lockwasher into place on nut.

NOTE: Install new V-seals onto cylinder pulley before installing pulley.

7. Re-install plate onto back of bearing housing with three screws and lockwashers.
8. Install the pulley onto the cylinder shaft, paragraph 25.

9. When the pulley is seated firmly onto the shaft, remove the puller bolt and puller allen fitting from the end of the cylinder shaft and install the large washer, lockwasher and bolt into the shaft and tighten.

28. SIDE PANELS (Right or Left)

- a. Remove the two screws holding the cabinet top rear corner tabs to the rear cross channel of the washer.
- b. Lift up on the back portion of the cabinet top and slide the top forward to disengage the cabinet top from the hold down tabs on the top flange of the front panel.
- c. Lift the cabinet top off the washer.
- d. Remove screws and washers holding rear panel to chassis and remove rear panel.
- e. Remove screws and washers holding side panels to chassis and remove side panels.

29. OUTER TUB

- a. Remove cabinet top, paragraph 1, rear panel, paragraph 23, and side panels, paragraph 28.
- b. Remove control panel, paragraph 2.
- c. Remove belts and pulley, paragraphs 24 and 25.
- d. Remove outer tub front panel, paragraph 21, and front panel, paragraph 22.
- e. Remove wash basket cylinder and shaft assembly, paragraph 26.
- f. Loosen all clamps and remove all hoses from outer tub.
- g. Remove three setscrews, lockwashers, flat washers and nuts holding front of outer tub to each side of front of chassis.
- h. Remove six washers and 12 nuts holding outer tub to chassis. Remove four setscrews, washers and nuts holding each side of outer tub to each side of chassis.
- i. Remove 16 screws from inside of tub.

30. MOTOR

NOTE: Disconnect ground wire before removing motor.

CAUTION

Whenever ground wires are removed during servicing, those ground wires must be reconnected to insure that the washer is properly grounded.

- a. Remove screws holding rear panel to cabinet and remove panel.

- b. Use a piece of two-by-four or something similar for leverage to keep the motor from falling while running the belt off the pulley. Once the belt has been removed from the pulley, lower the motor gradually, **DO NOT** let it drop or you could damage the motor.
- c. Remove the nuts, screws and washers holding the motor bracket to the bottom of the chassis assembly.
- d. Disconnect the motor harness plug.
- e. **If machine is mounted onto a raised platform with clearance underneath,** remove entire motor bracket with motor.
- f. **If machine is mounted directly to slab or existing floor,** pin must be driven from motor shaft while bracket remains attached to chassis. Remove clips on each end of motor bracket shaft before driving motor bracket shaft out.

CAUTION

When installing motor back onto motor bracket shaft, cut a two-by-four just long enough to fit between the tabs on the motor bracket shaft. The two-by-four will support the tabs and prevent them from breaking off when the motor bracket shaft is driven back in.

WARNING

Use caution when removing the motor out the rear of the washer as the motor is very heavy.

- g. Remove the motor by grasping the motor bracket shaft and carefully remove the motor out of the washer.

IMPORTANT: If motor was removed with motor bracket shaft attached, we recommend that you take the motor and motor bracket assembly to a machine shop and have the motor bracket shaft pressed out. Have the new motor installed on the motor bracket and the shaft pressed back into the motor and bracket. If this is not done, you could end up damaging the new motor.

31. PRESSURE BULBS

- a. Remove screws holding rear panel to cabinet and remove rear panel.

- b. Loosen hose clamp and remove the pressure bulb from the large nipple on the back of the outer tub.
- c. Disconnect the pressure hoses from the pressure bulbs by pulling the hose out of the connector at the top of the pressure bulb.

32. DRAIN VALVE

- a. Remove screws holding rear panel to cabinet and remove rear panel.
- b. Loosen hose clamps and remove overflow hose and drain hoses from drain valve.
- c. Disconnect the wires from the drain valve motor.
- d. Remove the two screws attaching the drain valve to the rear chassis brace and remove the drain valve.

33. FUSE HOLDER AND RESISTOR ASSEMBLY

- a. Remove the two screws holding the cabinet top rear corner tabs to the rear cross channel of the washer.
- b. Lift up on the back portion of the cabinet top and slide the top forward to disengage the cabinet top from the hold down tabs on the top flange of the front panel.
- c. Lift the cabinet top off the washer.
- d. Remove two screws holding rear access cover to rear cross channel.
- e. Disconnect wire at terminal block and second wire at quick disconnect.
- f. Turn the nut off the barrel of the fuse holder and pull the fuse holder out through the access opening in the rear channel.

34. TERMINAL BLOCK

- a. Remove the two screws holding the cabinet top rear corner tabs to the rear cross channel of the washer.
- b. Lift up on the back portion of the cabinet top and slide the top forward to disengage the cabinet top from the hold down tabs on the top flange of the front panel.
- c. Lift the cabinet top off the washer.
- d. Disconnect wires from terminal block.

IMPORTANT: Label terminals and appropriate wires before disconnecting so wires can be reinstalled correctly.

- e. Remove terminal block by removing screw and washer holding terminal block to inside of rear channel.

SECTION III

Service Helps

IMPORTANT: Refer to the Wiring Diagram for aid in testing washer components.

35. NO HOT WATER

POSSIBLE CAUSE	TO CORRECT
Water in hot water tank is cold.	
Hot water supply line is closed.	Check for closed valve, kinked hose, or obstruction in line.
Clogged inlet valve screens.	Remove and clean or replace screens.
Thermostat T1 or T2 improperly set or inoperative.	Set appropriate thermostat or replace thermostat if inoperative.
Inoperative hot water solenoid.	Check solenoid and replace solenoid if inoperative.
Inoperative pressure switch.	Check pressure switch and replace if inoperative.
No water entering cylinder.	Check track "D" on card and switch "JD" on card reader.
Broken, loose or incorrect wiring.	Refer to wiring diagram.

36. NO COLD WATER

POSSIBLE CAUSE	TO CORRECT
Cold water supply line is closed.	Check for closed valve, kinked hose, or obstruction in line.
Clogged inlet valve screen.	Remove and clean or replace screens.
Thermostat T1 or T2 improperly set or inoperative.	Set appropriate thermostat or replace thermostat if inoperative.
Inoperative cold water solenoid.	Check solenoid and replace solenoid if inoperative.
Inoperative pressure switch.	Check pressure switch and replace if inoperative.
No water entering cylinder.	Check track "G" on card and switch "JG" on card reader.
Broken, loose or incorrect wiring.	Refer to wiring diagram.

37. WASHER DOES NOT START AND THE PUSH BUTTON "ON/OFF" IS ON

POSSIBLE CAUSE	TO CORRECT
Electric power disconnected or tripped breaker or fuse blown. One Amp control fuse(s) blown.	Connect electrical power or replace breaker or fuse(s). Check fuse(s) (located on rear channel) and replace if blown.
3.9 Ohm resistor open.	Replace 3.9 Ohm resistor.
Door lock switch is inoperative or is not closed.	Check door lock assembly and replace if inoperative. Check door latch to ensure proper switch engagement.
Door safety switch is inoperative or is not tripped.	Check door lock assembly and replace if inoperative. Check door latch to ensure proper switch engagement.
Motor overload protector has cycled.	Wait 15 to 30 minutes for overload protector to reset. If protector cycles repeatedly, refer to paragraph 43.
Inoperative reversing timer.	Test reversing timer contacts. Replace timer if inoperative.
Inoperative reversing timer motor.	Replace reversing timer assembly.
Broken, loose or incorrect wiring.	Refer to the wiring diagram.

38. CYLINDER DOES NOT FILL

POSSIBLE CAUSE	TO CORRECT
No hot water.	Refer to paragraph 35.
No cold water.	Refer to paragraph 36.
Inoperative pressure switch.	Check switch and replace if inoperative.
Inoperative drain valve.	Check drain valve and replace if inoperative.
Obstruction in drain valve.	Clean drain valve.
Clogged inlet valve screens.	Remove inlet hoses from inlet valve and clean or replace screens.
Inoperative inlet valve.	Check inlet valve solenoids for proper operation, replace if inoperative.
Broken, loose or incorrect wiring.	Refer to the wiring diagram.

39. WATER DOES NOT SHUT OFF

POSSIBLE CAUSE	TO CORRECT
Sediment in inlet valve.	Disassemble and clean sediment from inlet valve or replace complete inlet valve.
Inoperative pressure switch.	Check switch and replace if inoperative.
Incorrect wiring.	Refer to wiring diagram.

40. WATER DOES NOT DRAIN FROM CLOTHES CYLINDER

POSSIBLE CAUSE	TO CORRECT
Obstruction in drain valve.	Disassemble and clean valve.
Kinked drain hose.	Straighten drain hose.
Inoperative drain valve motor.	Check motor and replace if inoperative.
Incorrect wiring.	Refer to wiring diagram.
Inoperative drain relay.	Check electrical connection "C11" and replace if inoperative.
Inoperative card.	Check track "A" on card and switch "JA" on card reader.

41. WASHER DOES NOT TUMBLE

POSSIBLE CAUSE	TO CORRECT
No electrical power.	Check fuses, switch outlet or power cord.
Inoperative reversing timer assembly.	Check reversing timer and replace if inoperative.
Door lock assembly improperly adjusted.	Adjust door lock assembly.
Motor overload protector has cycled.	Wait 15 to 30 minutes for overload protector to reset. If protector cycles repeatedly, refer to paragraph 43.
Inoperative wash motor.	Check motor and replace if inoperative.
Inoperative wash motor contactor.	Replace "C5" or "C4" contactor (depending on direction).
Broken, loose or incorrect wiring.	Refer to wiring diagram.

42. WASHER DOES NOT SPIN

POSSIBLE CAUSE	TO CORRECT
No electrical power.	Check fuses, switch outlet or power cord.
Obstruction in drain valve.	Disassemble and clean valve.
Kinked drain hose.	Straighten drain hose.
Inoperative drain valve motor.	Check motor and replace if inoperative.
Incorrect wiring.	Refer to wiring diagram.
Inoperative drain relay.	Check electrical connection "C11" and replace if inoperative.
Inoperative card.	Check track "F" on card and switch "JF" on card reader.
Motor overload protector has cycled.	Wait 15 to 30 minutes for overload protector to reset. If protector cycles repeatedly, refer to paragraph 43.
Inoperative spin relay.	Check "C8" spin relay and relay coil, and electrical connection "C3" and "C2".
Inoperative spin motor.	Replace spin motor.
Inoperative "H2" pressure switch.	Switch must be in the "normally closed" position. Check pressure hose to see if it is clogged preventing pressure switch from resetting. Check switch and replace if inoperative.
Check water supply.	Has to be in high level fill before it will go into spin.
Broken, loose or incorrect wiring.	Refer to wiring diagram.

43. MOTOR OVERLOAD PROTECTOR CYCLES REPEATEDLY (Wash or Spin)

POSSIBLE CAUSE	TO CORRECT
Low voltage.	See Installation Instructions (supplied with washer) for electrical requirements.
Inoperative motor overload protector.	Replace motor.
Water does not drain from cylinder.	Refer to paragraph 40.
Inoperative contactor.	Check contactor and replace if inoperative.

44. CYLINDER DOES NOT TURN

POSSIBLE CAUSE	TO CORRECT
Wash motor does not run.	Refer to paragraph 41.
Spin motor does not run.	Refer to paragraph 42.
Loose or broken belts.	Check belt tension or replace belts.

45. DOOR WILL NOT OPEN

POSSIBLE CAUSE	TO CORRECT
Inoperative door lock solenoid.	Replace door lock solenoid.
No electrical power to door lock solenoid (control fuse(s) blown).	Replace fuse(s).
Motor overload protector has cycled.	Wait 15 to 30 minutes for motor overload protector to reset. If overload protector cycles repeatedly refer to paragraph 43.
Door interlock not energized.	Check door lock and switch mechanism, and door latch hook for proper alignment and operation.
Inoperative door safety switch.	Check switch and replace if inoperative.
Broken, loose or incorrect wiring.	Refer to wiring diagram.

46. DOOR LEAKS

POSSIBLE CAUSE	TO CORRECT
Insufficient pressure on door gasket	Adjust door.
Damaged gasket.	Replace gasket.

47. EXCESSIVE VIBRATION

POSSIBLE CAUSE	TO CORRECT
Unbalanced load in cylinder.	Stop washer, redistribute load, then restart washer.
Loosened mounting bolts.	Tighten bolts.
Loose cabinet screws.	Tighten screws.