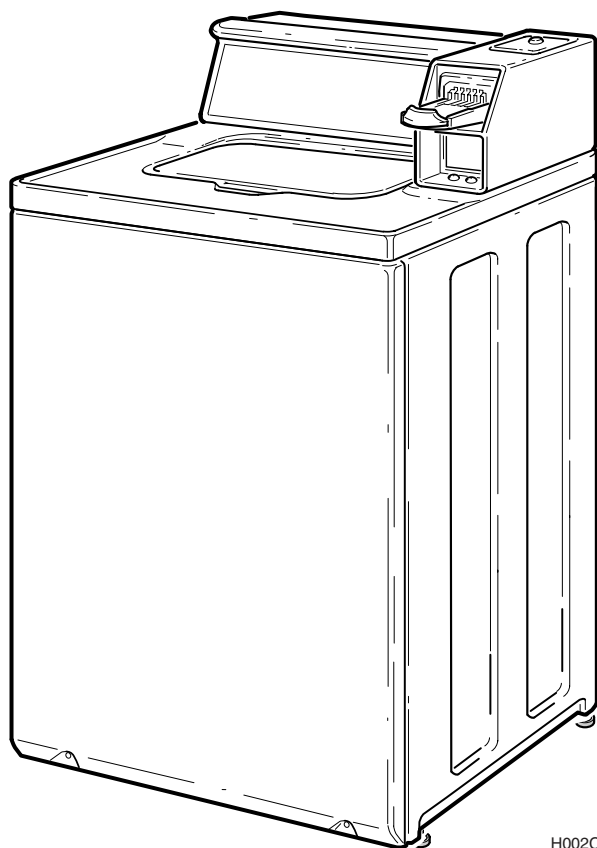


Commercial Automatic Washers

Metered and Nonmetered Models

Refer to Page 3 for Model Numbers



H002C__37950

Table of Contents

| Title | Page |
|---|------|
| Parts Ordering Information..... | 2 |
| Nameplate Location | 2 |
| Model Identification | 3 |
| Timer, Case and Plate | 4 |
| Timer Case | 6 |
| Timer, Meter Case and Service Door | 8 |
| Coin Drop, Meter Case and Service Door | 10 |
| Coin Drop, Meter Case and Service Door | 12 |
| Coin Drop, Meter Case and Service Door | 14 |
| Security Case and Card Reader | 16 |
| Control Panel, Control Hood and Controls..... | 18 |
| Control Panel, Control Hood and Controls..... | 20 |
| Control Panel, Control Hood and Controls..... | 22 |
| Control Panel, Control Hood and Controls..... | 24 |
| Control Panel, Control Hood and Controls..... | 26 |
| Cabinet Top, Loading Door and Lid Lock | 28 |
| Cabinet Top, Loading Door and Shield..... | 30 |
| Out-of-Balance Switch | 32 |
| Inlet Hose, Fill Hose, Mixing Valve Mounting Bracket..... | 34 |
| Mixing Valve Assembly | 36 |
| Agitator, Drive Bell, Seal Kit, Washtub and Hub | 38 |
| Outer Tub, Cover and Pressure Hose | 40 |
| Motor, Mounting Bracket, Belt, Idler Assembly and Pump..... | 42 |
| Pump Bracket, Hoses and Siphon Break Kit | 44 |
| Transmission Assembly and Balance Ring..... | 46 |
| 34526P Transmission Assembly..... | 48 |
| Bearing Housing, Brake, Pulley and Pivot Dome..... | 50 |
| Front Panel, Base Assembly and Cabinet Assembly..... | 52 |
| Mixing Valve and Motor Disconnect Blocks, Terminals and Terminal Extractor Tool | 54 |
| Power Cord and Terminals | 56 |
| Special Tools | 58 |
| Special Tools | 60 |
| Wire Harnesses and Wires | 62 |
| Parts Index..... | 63 |

© Copyright 2003, Alliance Laundry Systems LLC

All rights reserved. No part of the contents of this book may be reproduced or transmitted in any form or by any means without the expressed written consent of the publisher.

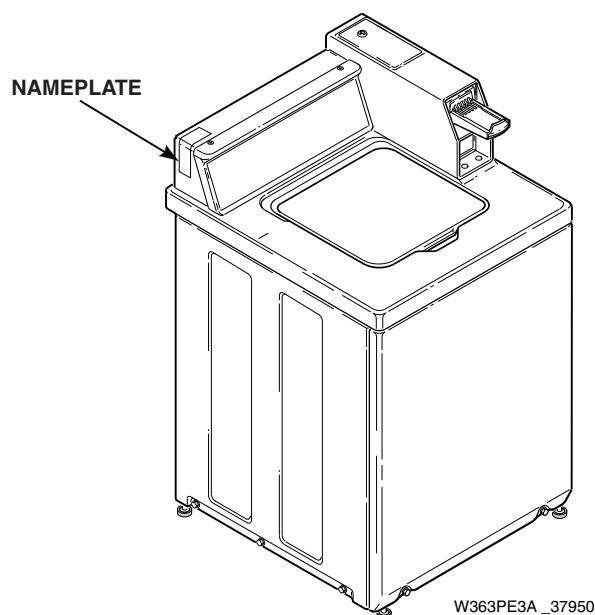
Parts Ordering Information

If literature or replacement parts are required, contact the source from whom the machine was purchased or contact Alliance Laundry Systems at (920) 748-3950 for the name and address of the nearest authorized parts distributor.

For technical assistance, call (920) 748-3121.

Nameplate Location

When calling or writing about your product, be sure to mention model and serial numbers. Model and serial numbers are located on nameplate(s) as shown.



Model Identification

Information in this manual is applicable to these washer models:

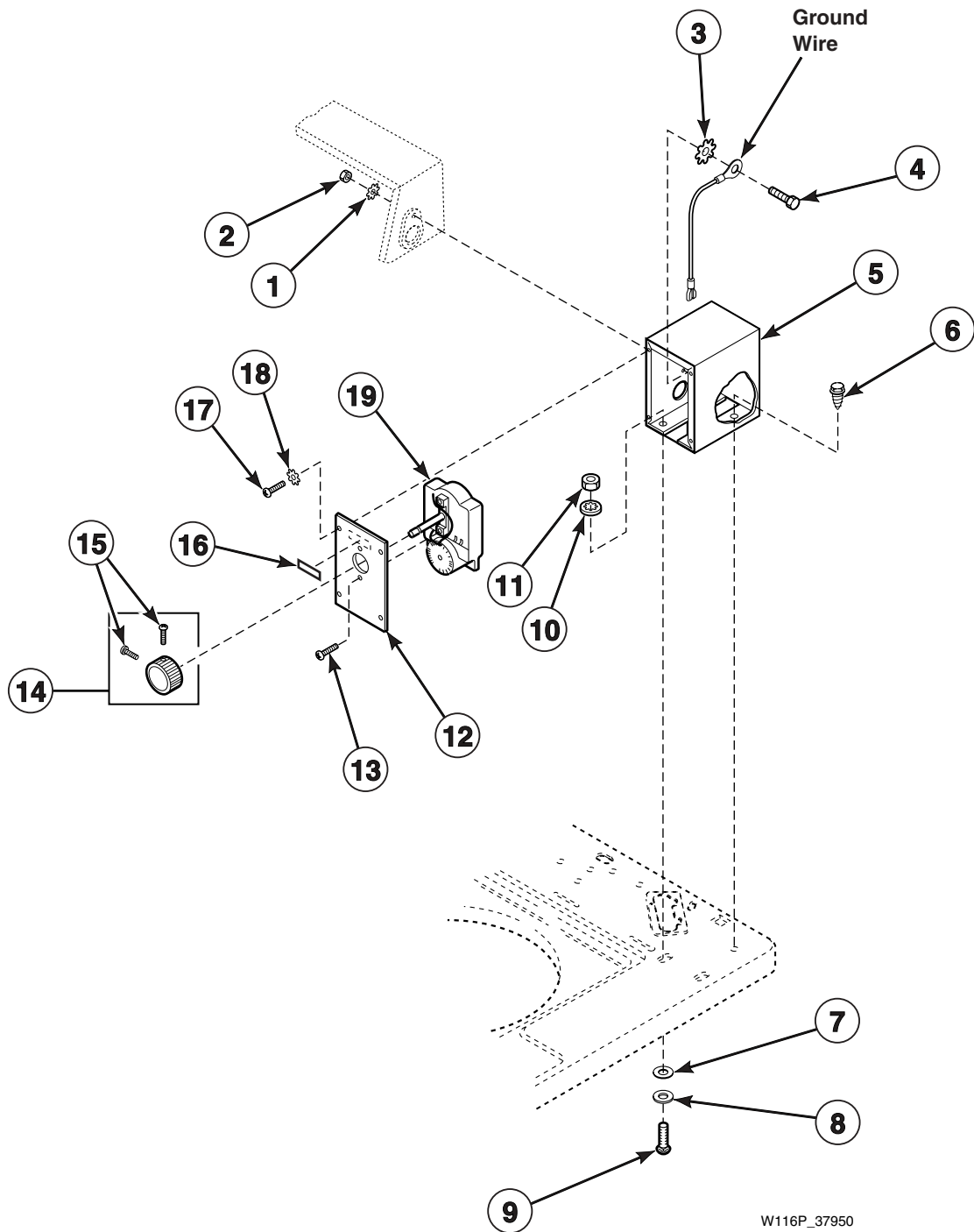
| | | | | |
|--------------|--------------|--------------|--------------|--------------|
| EA2011*A3000 | EA2111*A5412 | EA2921*A3059 | ZA2111*A3059 | ZA2920*A1102 |
| EA2011*A3050 | EA2111*A5417 | GA2210*A1102 | ZA2111*A3069 | ZA2921*A1102 |
| EA2111*A3000 | EA2211*A1200 | ZAJ920*A1102 | ZA2120*A1102 | ZA2921*A3059 |
| EA2111*A3050 | EA2211*A1300 | ZAJ921*A1102 | ZA2121*A1102 | ZA2921*A99F4 |
| EA2111*A3059 | EA2211*A3000 | ZA2020*A1102 | ZA2210*A1102 | ZA3820*A1102 |
| EA2111*A3069 | EA2211*A3066 | ZA2021*A1102 | ZA2220*A1102 | ZA3821*A1102 |
| EA2111*A5400 | EA2921*A3000 | ZA2110*A1102 | ZA2221*A1102 | |
| EA2111*A5406 | EA2921*A3050 | ZA2111*A1102 | ZA2821*A1102 | |

* Add Letter To Designate Color. L - Almond W - White

[illegible]

Timer, Case and Plate

Models EA2011*A3000, EA2011*A3050, ZA2020*A1102 and ZA2021*A1102



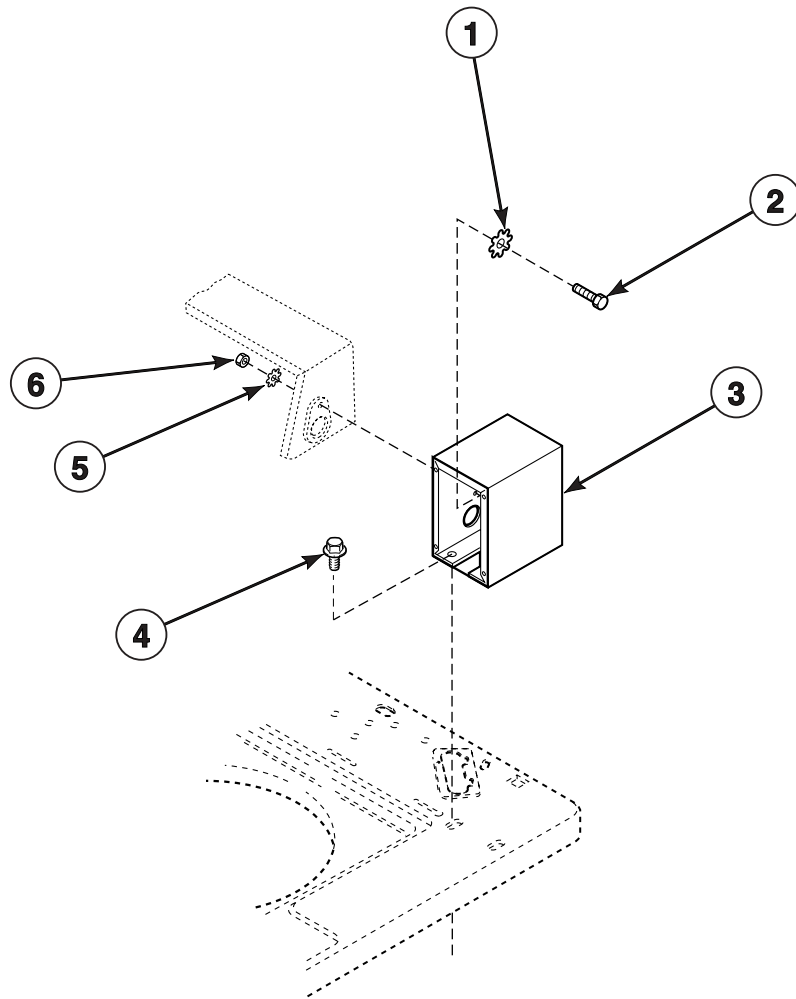
Timer, Case and Plate

| REF | PART NO. | DESCRIPTION | COMMENTS |
|-----|----------|-----------------------|-------------------|
| 1 | 02431 | Lockwasher | |
| 2 | 52566 | Nut | |
| 3 | M400017 | Lockwasher | |
| 4 | 02916 | Screw | |
| 5 | 37733* | Timer Case | |
| 6 | 23962 | Screw | |
| 7 | 23225 | Washer | Vinyl |
| 8 | 30627 | Washer | |
| 9 | 02505 | Carriage Bolt | |
| 10 | 21456 | Lockwasher | |
| 11 | 20275 | Nut | |
| 12 | 31864* | Timer Plate | |
| 13 | 27328 | Screw | |
| 14 | 26256 | Timer Knob Assembly | |
| 15 | 80399 | Screw | |
| 16 | 53738 | Push-to-Start Sticker | |
| 17 | 51778 | Screw | |
| 18 | 21734 | Lockwasher | |
| 19 | 28716 | Timer | 115 Volt/60 Hertz |
| | 28719 | Timer | 240 Volt/50 Hertz |

* Add Letter To Designate Color. L - Almond W - White

Timer Case

Models ZAJ920*A1102, ZAJ921*A1102 and ZA2921*A99F4



W017B__37950

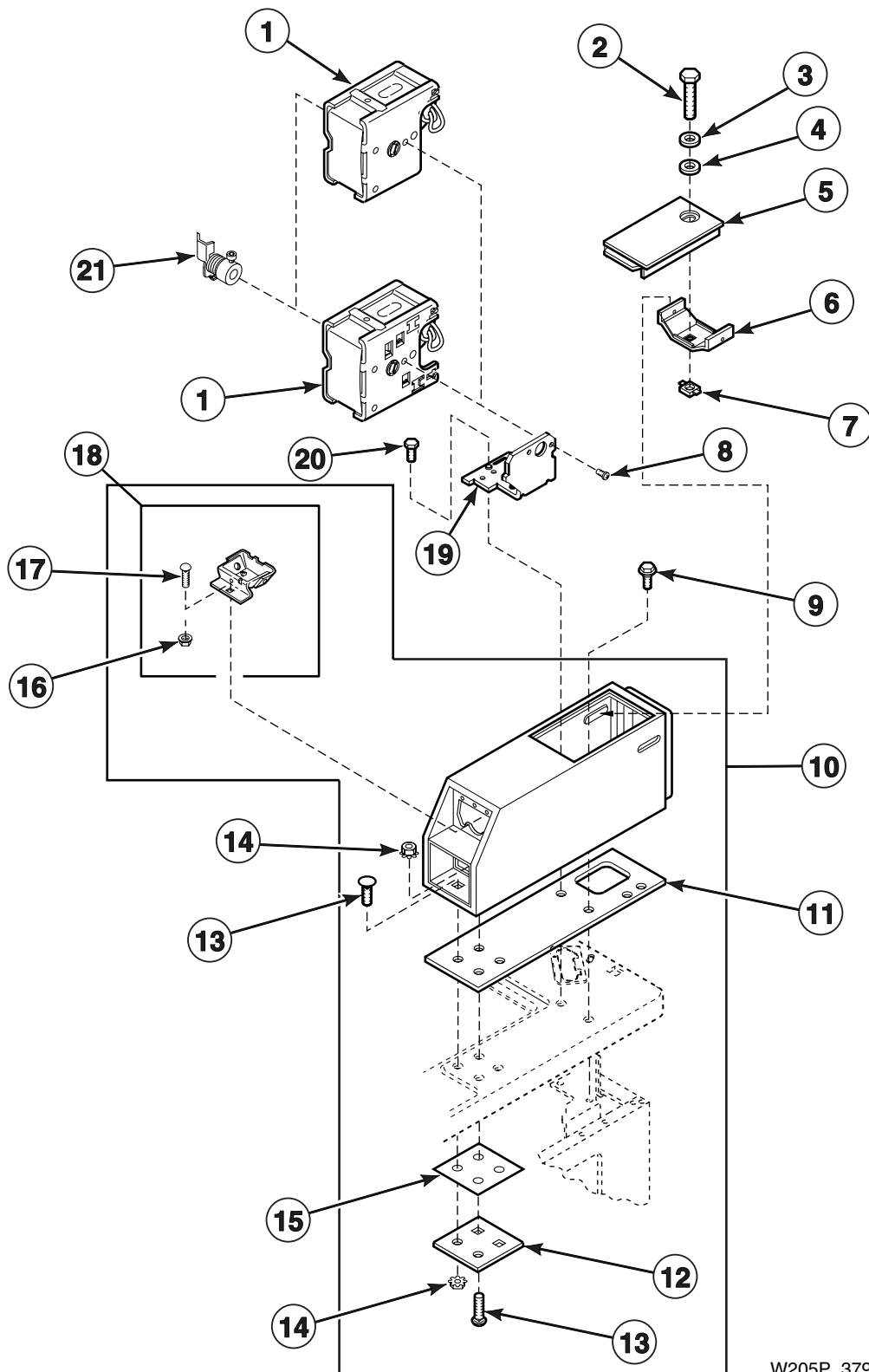
Timer Case

| REF | PART NO. | DESCRIPTION | COMMENTS |
|-----|----------|-------------|----------|
| 1 | M400017 | Lockwasher | |
| 2 | 02916 | Screw | |
| 3 | 37733* | Timer Case | |
| 4 | 36048 | Screw | |
| 5 | 02431 | Lockwasher | |
| 6 | 52566 | Nut | |

* Add Letter To Designate Color. L - Almond W - White

Timer, Meter Case and Service Door

Models EA2111*A3000, EA2111*A3050, EA2111*A3059, EA2111*A3069, EA2111*A5400, EA2111*A5406, EA2111*A5412, EA2111*A5417, EA2211*A1200, EA2211*A1300, EA2211*A3000, EA2211*A3066, GA2210*A1102, ZA2110*A1102, ZA2111*A1102, ZA2111*A3059, ZA2111*A3069, ZA2120*A1102, ZA2121*A1102, ZA2210*A1102, ZA2220*A1102 and ZA2221*A1102



W205P_37950

Timer, Meter Case and Service Door

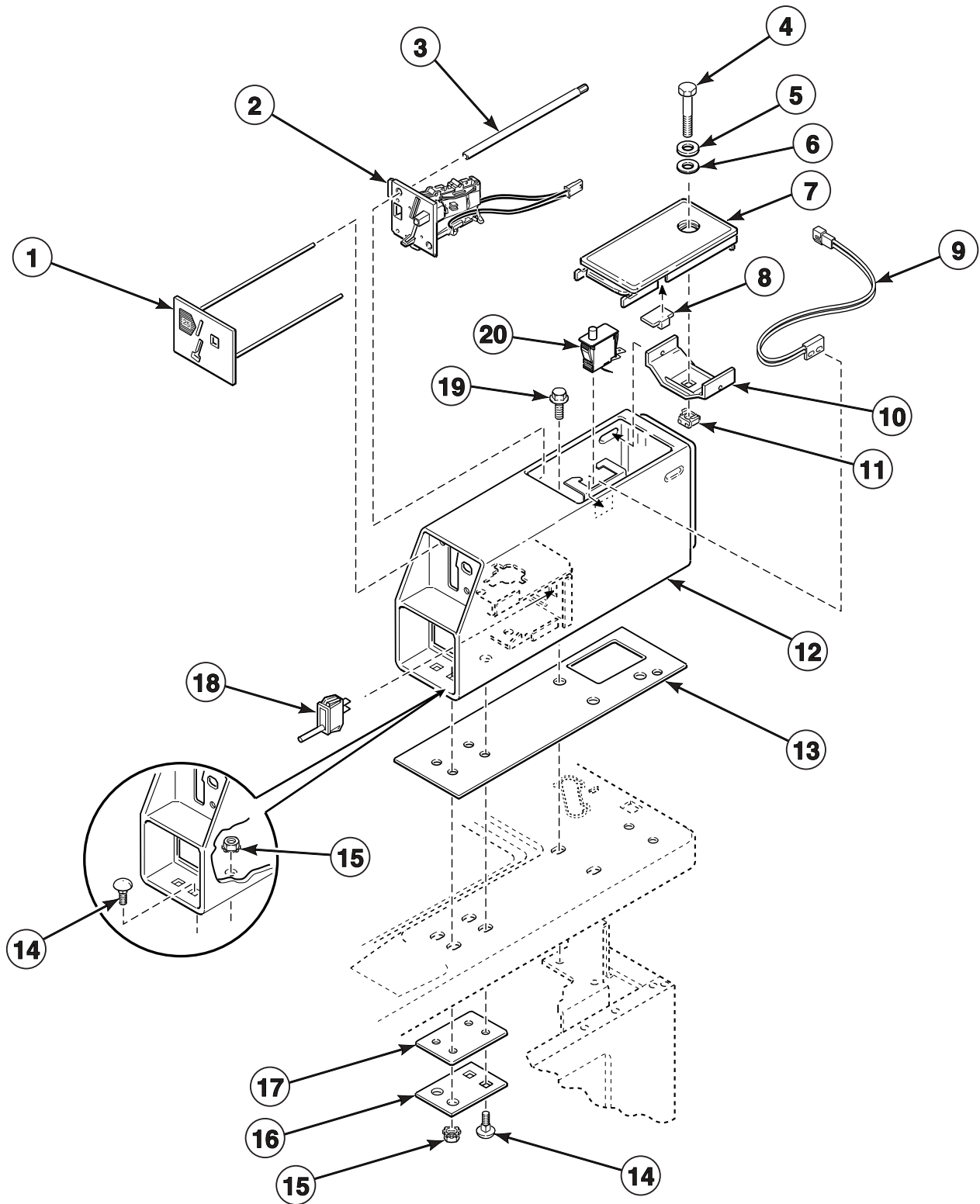
| REF | PART NO. | DESCRIPTION | COMMENTS |
|-----|----------|-------------------|---|
| 1 | 31111P | Timer Assembly | 115 Volt/60 Hertz; Models ZA2110*A1102, ZA2111*A1102, ZA2120*A1102 and ZA2121*A1102 |
| | 31504P | Timer Assembly | 230 Volt/50 Hertz; Models EA2111*A3000, EA2111*A3050, EA2111*A3059, EA2111*A3069, ZA2111*A3059 and ZA2111*A3069 |
| | 34601P | Timer Assembly | 115 Volt/60 Hertz; Models EA2211*A1200, GA2210*A1102, ZA2210*A1102, ZA2220*A1102 and ZA2221*A1102 |
| | 34603 | Timer Assembly | 230 Volt/50 Hertz; Models EA2211*A3000 and EA2211*A3066 |
| | 34604 | Timer Assembly | 100 Volt/50 Hertz; Model EA2211*A1300 |
| | 35368P | Timer Assembly | 230 Volt/60 Hertz; Models EA2111*A5400, EA2111*A5406, EA2111*A5412 and EA2111*A5417 |
| 2 | 503673 | Screw | |
| 3 | 35917 | Washer | |
| 4 | 35774 | Washer | Vinyl |
| 5 | 35798*P | Service Door | |
| 6 | 30642 | Locking Bracket | |
| 7 | 30647 | Retainer Nut | |
| 8 | 21720 | Screw | |
| 9 | 502431 | Shoulder Screw | |
| 10 | 524P3* | Meter Case | Includes items 11, 12, 13, 14, 15 and 18 |
| 11 | 26354 | Meter Case Gasket | |
| 12 | 35525 | Bracket | |
| 13 | 02505 | Carriage Bolt | |
| 14 | 29786 | Nut | |
| 15 | 35526 | Gasket | |
| 16 | 29796 | Nut | |
| 17 | 29651 | Bolt | |
| 18 | 523P3 | Coin Funnel Kit | Includes items 16 and 17 |
| 19 | 35249 | Timer Bracket | |
| 20 | 36048 | Screw | |
| 21 | 29503 | Clutch | |

* Add Letter To Designate Color. L - Almond W - White

Coin Drop, Meter Case and Service Door

Old Style Airpax Coin Drop

Models EA2921*A3000, EA2921*A3050, EA2921*A3059, ZA2920*A1102, ZA2921*A1102 and ZA2921*A3059



TLW1471P_37950

Coin Drop, Meter Case and Service Door

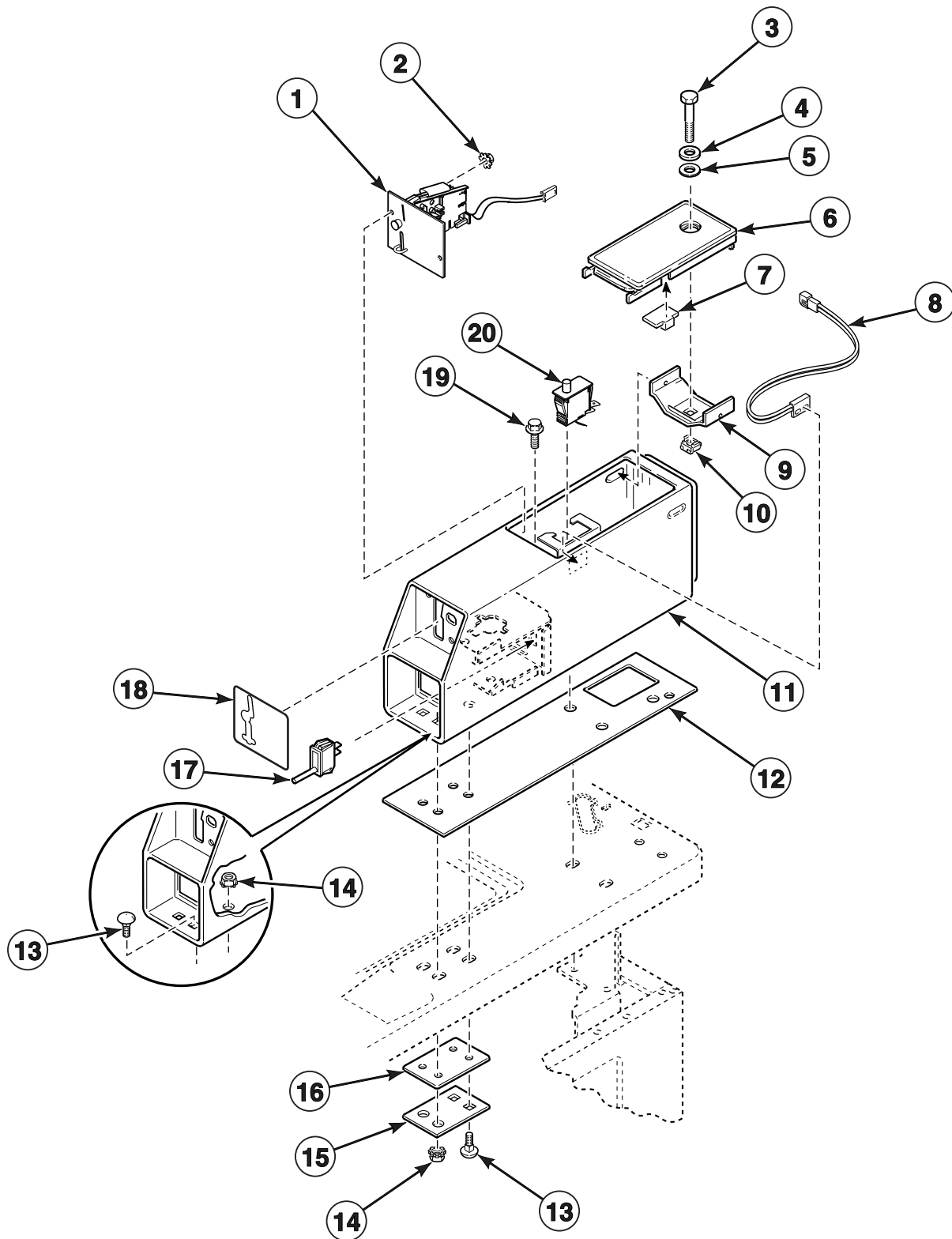
| REF | PART NO. | DESCRIPTION | COMMENTS |
|-----|----------|-----------------------|--------------------------------|
| | 39955P | Wire Harness Kit | Starting Serial No. 9609025315 |
| 1 | 501978 | Coin Drop Front Plate | Thailand |
| | 501966 | Coin Drop Front Plate | Token 118-1 |
| 2 | 431631 | Coin Drop | Australia |
| | M411706 | Coin Drop | Belgium |
| | M411704 | Coin Drop | Denmark |
| | M411605 | Coin Drop | France |
| | M411606 | Coin Drop | Hong Kong |
| | M411708 | Coin Drop | South Africa |
| | M411608 | Coin Drop | South Korea |
| | M411707 | Coin Drop | Taiwan |
| | M411709 | Coin Drop | Thailand |
| | M414549P | Coin Drop | Token 118-1 |
| | M411607 | Coin Drop | Token 118-5 |
| 3 | 501365 | Locking Rod | |
| 4 | 503673 | Screw | |
| 5 | 35917 | Washer | |
| 6 | 35774 | Washer | Vinyl |
| 7 | 35798*P | Service Door | |
| 8 | 501453 | Magnet | Through Serial No. 9609025315 |
| 9 | 34599 | Switch | Through Serial No. 9609025315 |
| 10 | 30642 | Locking Bracket | |
| 11 | 30647 | Retainer Nut | |
| 12 | 38542*P | Meter Case | |
| 13 | 26354 | Gasket | |
| 14 | 02505 | Carriage Bolt | |
| 15 | 29786 | Nut | |
| 16 | 35525 | Bracket | |
| 17 | 35526 | Gasket | |
| 18 | 34536 | Switch | Through Serial No. 9509031143 |
| | 504570 | Switch | Starting Serial No. 9509031144 |
| 19 | 36048 | Screw | |
| 20 | 504570 | Switch | Starting Serial No. 9609025316 |

* Add Letter To Designate Color. L - Almond W - White

Coin Drop, Meter Case and Service Door

New Style Munzprufer Coin Drop

Models EA2921*A3000, EA2921*A3050, EA2921*A3059, ZA2920*A1102, ZA2921*A1102 and ZA2921*A3059



TLW1472P_37950

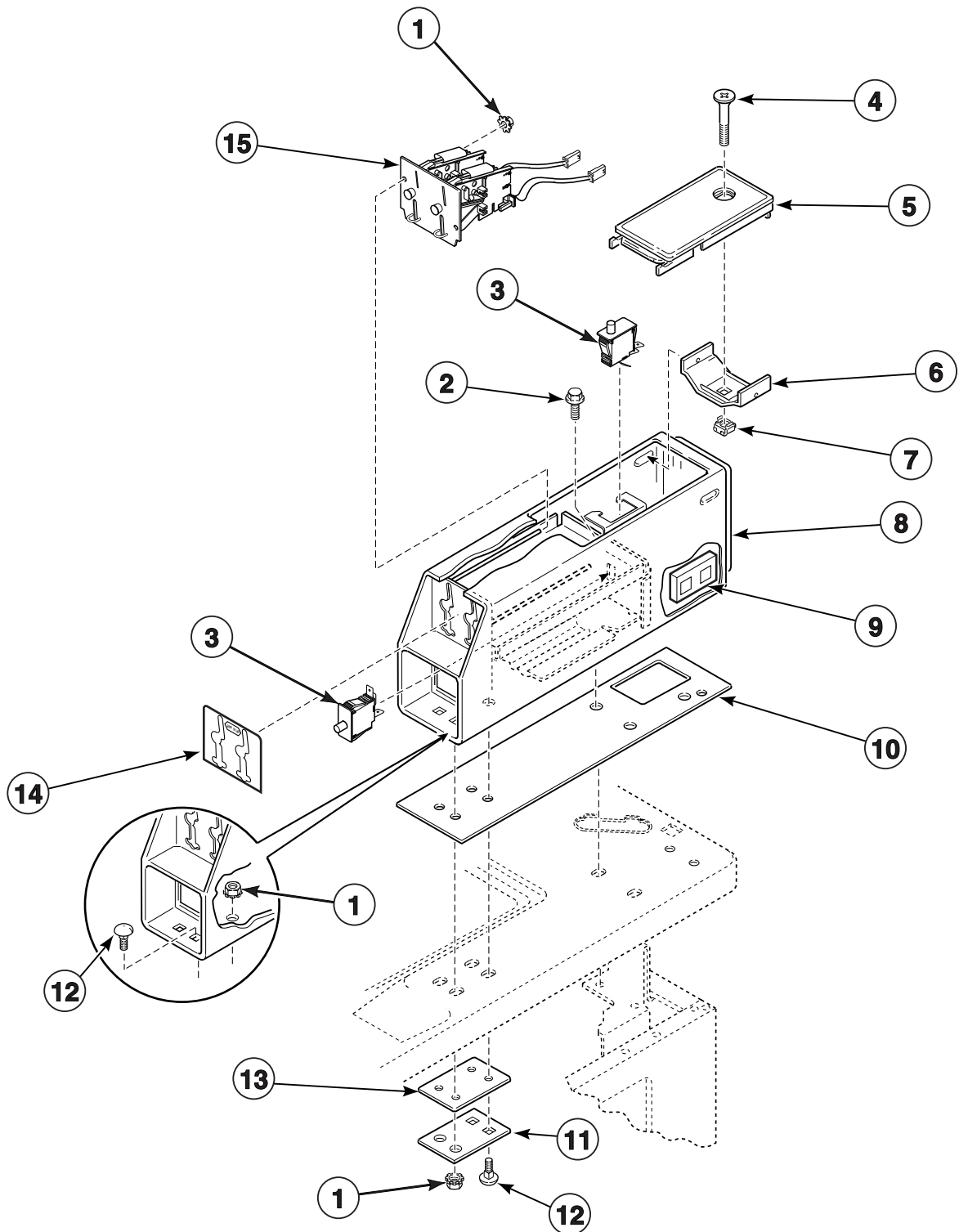
Coin Drop, Meter Case and Service Door

| REF | PART NO. | DESCRIPTION | COMMENTS |
|-----|----------|---------------------------|--------------------------------------|
| | 39955P | Wire Harness Kit | Starting Serial No. 9609025316 |
| 1 | 38479 | Single Coin Drop Assembly | U.S.A.; Currency \$.25 |
| | 38467 | Dual Coin Drop Assembly | Australia; Currency \$.20 / \$1.00 |
| | 38464 | Single Coin Drop Assembly | Canada; Currency \$.25 |
| | 200578 | Dual Coin Drop Assembly | Canada; Currency \$.25 / \$1.00 |
| | 38517 | Dual Coin Drop Assembly | Denmark; Currency 1/5 Krone |
| | 38472 | Dual Coin Drop Assembly | England; Currency 20 Pence / 1 Pound |
| | 38519 | Dual Coin Drop Assembly | Japan; Currency 100 Yen / 500 Yen |
| | 38521 | Dual Coin Drop Assembly | Korea; Currency 100 Won / 500 Won |
| | 38522 | Dual Coin Drop Assembly | New Zealand; Currency \$.20 / \$1.00 |
| | 38964 | Dual Coin Drop Assembly | Taiwan; Currency 5NT / 10NT |
| | 39157 | Dual Coin Drop Assembly | Israel; Currency 1/5 Shekel |
| | 38462 | Single Coin Drop Assembly | Token; Currency STD-118-1 |
| | 38463 | Single Coin Drop Assembly | Token; Currency STD-118-5 |
| | 38963 | Single Coin Drop Assembly | Token; Currency STD-118-16 |
| 2 | 29786 | Locknut | |
| 3 | 503673 | Screw | |
| 4 | 35917 | Washer | |
| 5 | 35774 | Washer | Vinyl |
| 6 | 35798*P | Service Door | |
| 7 | 501453 | Magnet | Through Serial No. 9609025315 |
| 8 | 34599 | Switch | Through Serial No. 9609025315 |
| 9 | 30642 | Locking Bracket | |
| 10 | 30647 | Retainer Nut | |
| 11 | 38542*P | Meter Case | |
| 12 | 26354 | Gasket | |
| 13 | 02505 | Carriage Bolt | |
| 14 | 29786 | Locknut | |
| 15 | 35525 | Bracket | |
| 16 | 35526 | Gasket | |
| 17 | 34536 | Switch | Through Serial No. 9509031143 |
| | 504570 | Switch | Starting Serial No. 9509031144 |
| 18 | 38676 | Front Overlay | Dual coin drops |
| | 38717 | Front Overlay | Single coin drop; U.S.A. |
| | 38675 | Front Overlay | All other single coin drops |
| 19 | 36048 | Screw | |
| 20 | 504570 | Switch | Starting Serial No. 9609025316 |

* Add Letter To Designate Color. L - Almond W - White

Coin Drop, Meter Case and Service Door

Model ZA2821*A1102



W343PZ3A_37950

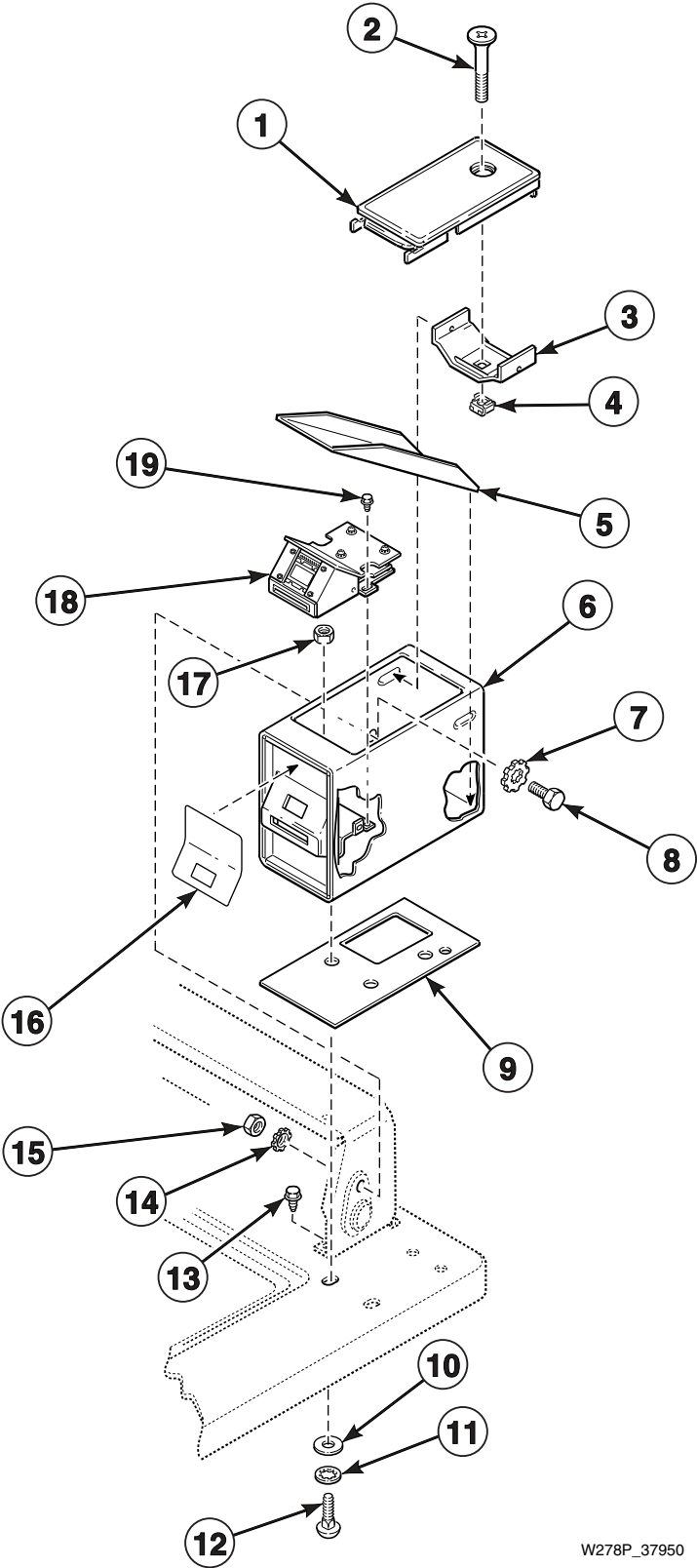
Coin Drop, Meter Case and Service Door

| REF | PART NO. | DESCRIPTION | COMMENTS |
|-----|----------|-------------------------|---------------------------------|
| 1 | 29786 | Nut | |
| 2 | 36048 | Screw | |
| 3 | 504570 | Switch | |
| 4 | 503673 | Screw | |
| 5 | 35798*P | Service Door | |
| 6 | 30642 | Bracket | |
| 7 | 30647 | Retainer Nut | |
| 8 | 38724* | Meter Case | |
| 9 | 38571 | Multiplier | |
| | 38673 | Wire Harness | |
| 10 | 26354 | Gasket | |
| 11 | 35525 | Bracket | |
| 12 | 02505 | Carriage Bolt | |
| 13 | 35526 | Gasket | |
| 14 | 39073 | Front Overlay | |
| | 38676 | Optional Overlay | |
| 15 | 200578 | Dual Coin Drop Assembly | Canada; Currency \$.25 / \$1.00 |

* Add Letter To Designate Color. L - Almond W - White

Security Case and Card Reader

Models ZA3820*A1102 and ZA3821*A1102



W278P_37950

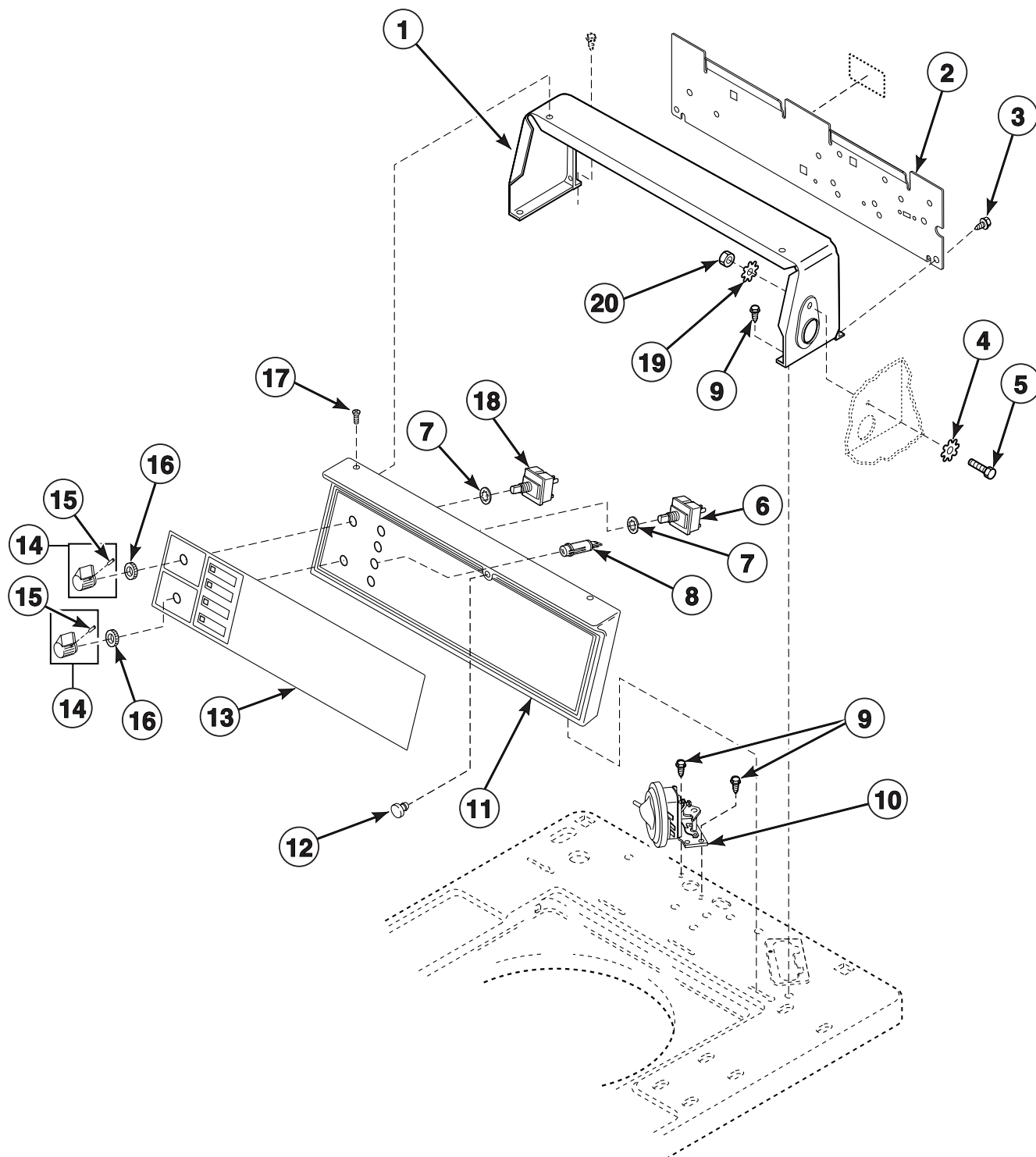
Security Case and Card Reader

| REF | PART NO. | DESCRIPTION | COMMENTS |
|-----|----------|---------------------|----------|
| 1 | 35798*P | Service Door | |
| 2 | 503673 | Screw | |
| 3 | 30642 | Locking Bracket | |
| 4 | 30647 | Retainer Nut | |
| 5 | 38754 | Shield | |
| 6 | 38145* | Security Case | |
| 7 | M400017 | Lockwasher | |
| 8 | 02916 | Screw | |
| 9 | 37526 | Gasket | |
| 10 | 23225 | Washer | Vinyl |
| 11 | 30627 | Washer | |
| 12 | 02505 | Carriage Bolt | |
| 13 | 23962 | Screw | |
| 14 | 02431 | Lockwasher | |
| 15 | 52566 | Nut | |
| 16 | 38348 | Instruction Overlay | |
| 17 | 29786 | Nut | |
| 18 | 39685 | Card Reader | |
| 19 | 501524 | Screw | |

* Add Letter To Designate Color. L - Almond W - White

Control Panel, Control Hood and Controls

Models EA2011*A3000, EA2011*A3050, EA2111*A3000, EA2111*A3050, EA2111*A5400, EA2111*A5406, EA2111*A5412, EA2111*A5417, EA2211*A1200, EA2211*A1300, EA2211*A3000, EA2211*A3066, GA2210*A1102, ZA2020*A1102, ZA2021*A1102, ZA2110*A1102, ZA2111*A1102, ZA2120*A1102, ZA2121*A1102, ZA2210*A1102, ZA2220*A1102 and ZA2221*A1102



W201P_37950

Control Panel, Control Hood and Controls

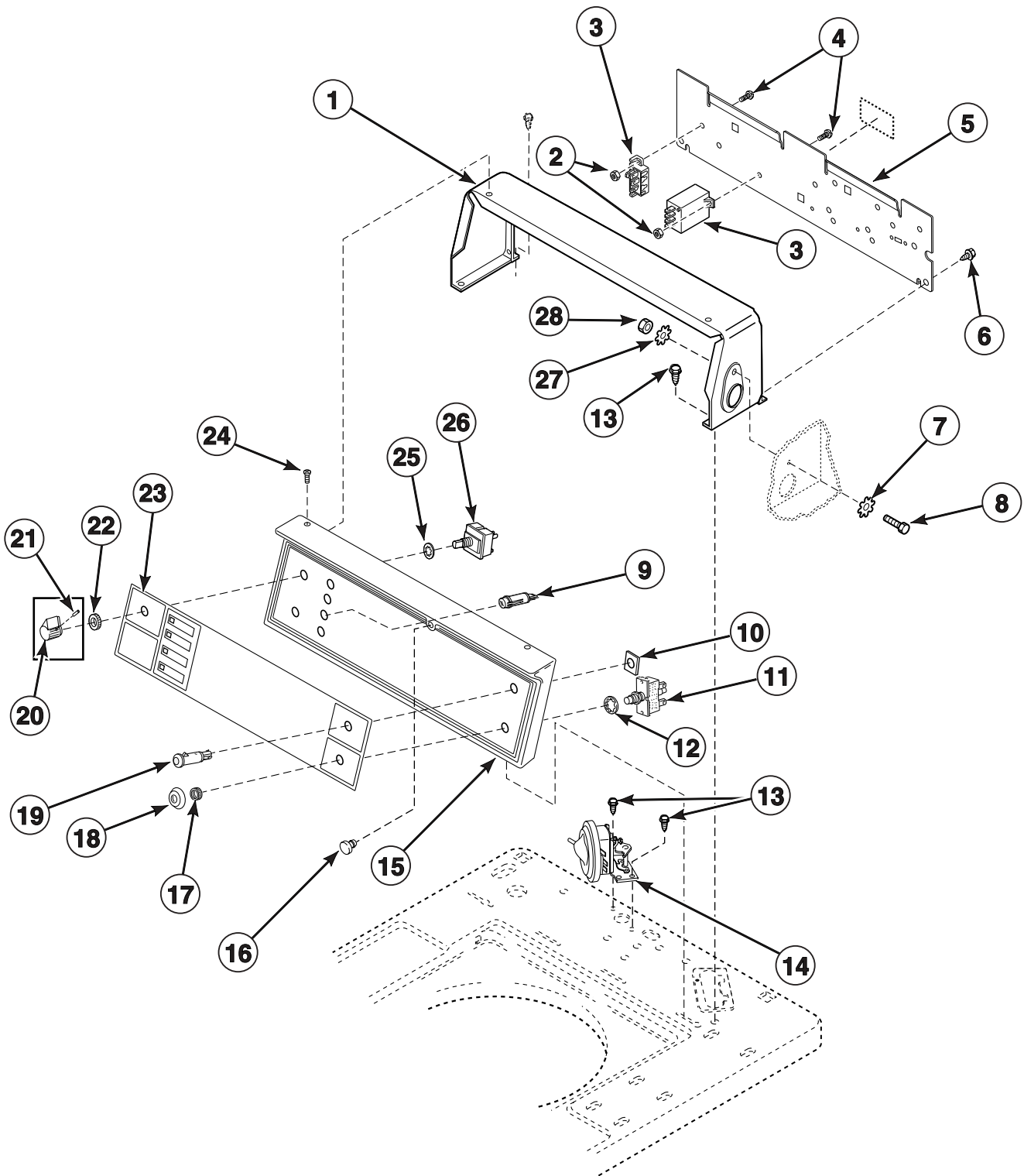
| REF | PART NO. | DESCRIPTION | COMMENTS |
|-----|----------|---------------------------------|--|
| 1 | 37075* | Control Hood | |
| 2 | 38267 | Control Hood Rear Panel | |
| 3 | 23222 | Screw | |
| 4 | M400017 | Lockwasher | |
| 5 | 02916 | Screw | |
| 6 | 27762 | Cycle Selector Switch | Selected models |
| 7 | 91176 | Lockwasher | |
| 8 | 32463 | Indicator Light | Unbalanced Load; 120 Volt |
| | 32466 | Indicator Light | In Use; 120 Volt |
| | 32464 | Indicator Light | Rinse/Spin; 120 Volt |
| | 32518 | Indicator Light | Unbalanced Load; 250 Volt |
| | 38281 | Indicator Light | In Use; 250 Volt |
| | 32519 | Indicator Light | Rinse/Spin; 250 Volt |
| 9 | 23962 | Screw | |
| 10 | 35889 | Pressure Switch | |
| 11 | 36521* | Control Panel Frame and Bracket | |
| 12 | 32648 | Bumper | |
| 13 | N/A | Control Panel Overlay | Models EA2111*A5406, EA2111*A5412 and EA2111*A5417 |
| | 34312 | Control Panel Overlay | Model GA2210*A1102 |
| | 35960 | Control Panel Overlay | Models ZA2020*A1102, ZA2021*A1102, ZA2120*A1102, ZA2121*A1102, ZA2220*A1102 and ZA2221*A1102 |
| | 35961 | Control Panel Overlay | Models ZA2110*A1102, ZA2111*A1102 and ZA2210*A1102 |
| | 32460 | Control Panel Overlay | All other models |
| 14 | 39897 | Control Knob Assembly | |
| 15 | N/A | Setscrew | |
| 16 | 24205 | Knurled Nut | |
| 17 | 500226 | Screw | Phillips head |
| | 35528 | Screw | Torx head; Refer to <i>Special Tools</i> section for Torx Bit and Holder Tool |
| 18 | 81799 | Wash Temperature Switch | |
| 19 | 02431 | Lockwasher | |
| 20 | 52566 | Locknut | |

* Add Letter To Designate Color. L - Almond W - White

N/A = Part no longer available

Control Panel, Control Hood and Controls

Models EA2111*A3059 and ZA2111*A3059



W202P_37950

Control Panel, Control Hood and Controls

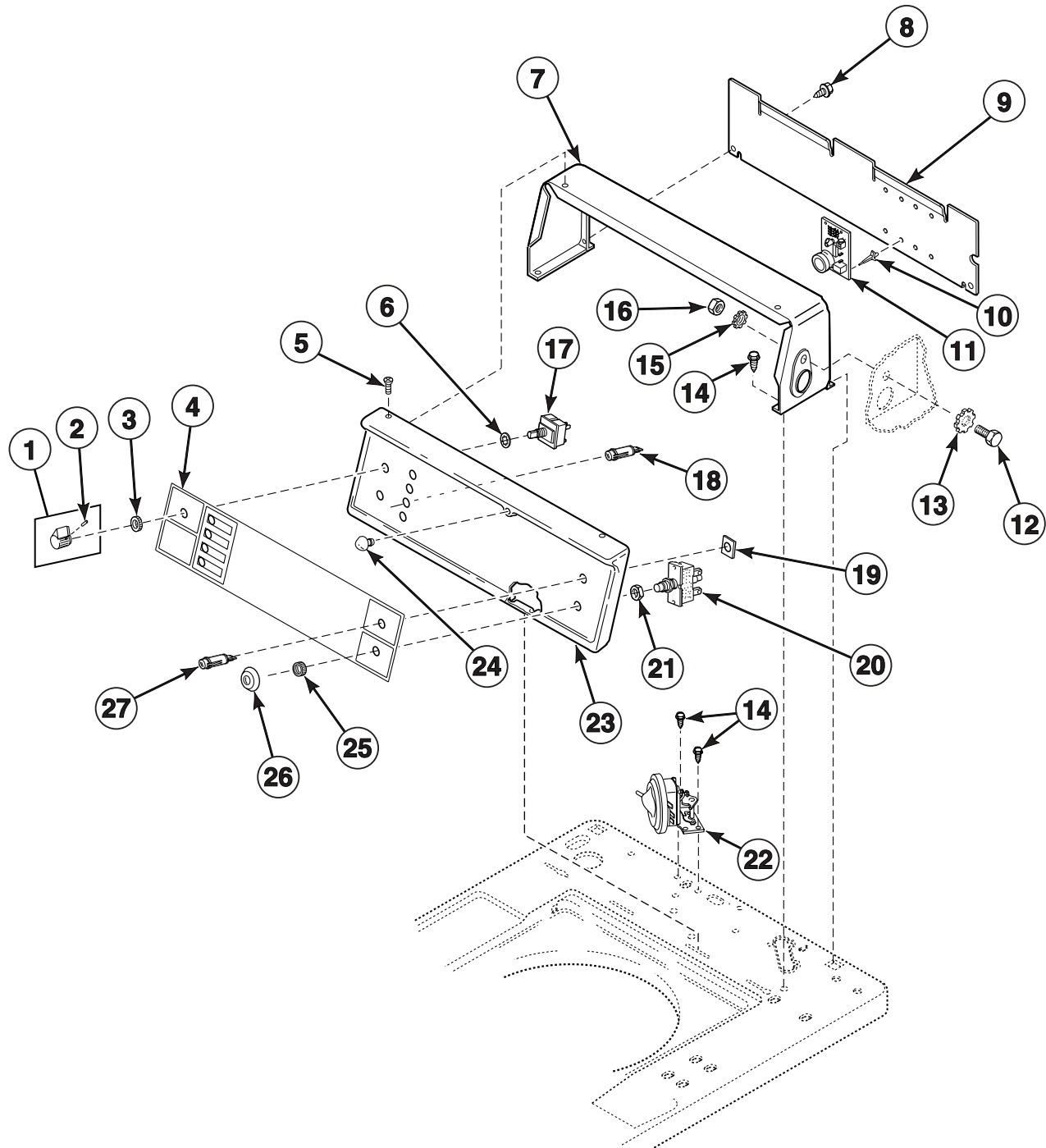
| REF | PART NO. | DESCRIPTION | COMMENTS |
|-----|----------|---------------------------------|---|
| 1 | 37075* | Control Hood | |
| 2 | 02788 | Nut | |
| 3 | 598P3 | Electric Lid Lock Kit | |
| 4 | N/A | Screw | |
| 5 | 38267 | Control Hood Rear Panel | |
| 6 | 23222 | Screw | |
| 7 | M400017 | Lockwasher | |
| 8 | 02916 | Screw | |
| 9 | 32518 | Indicator Light | Unbalanced Load |
| | 32519 | Indicator Light | Rinse/Spin |
| | 38281 | Indicator Light | In Use |
| 10 | 34762 | Push-On Clip | |
| 11 | 55882 | Push Button Switch | |
| 12 | 52947 | Nut | |
| 13 | 23962 | Screw | |
| 14 | 35889 | Pressure Switch | |
| 15 | 36521* | Control Panel Frame and Bracket | |
| 16 | 32648 | Bumper | |
| 17 | 24206 | Knurled Nut | |
| 18 | N/A | Switch Collar | |
| 19 | 39536 | Indicator Light | Lid Switch |
| 20 | 39897 | Control Knob | |
| 21 | N/A | Setscrew | |
| 22 | 24205 | Knurled Nut | |
| 23 | 32549 | Control Panel Overlay | Model EA2111*A3059 |
| | 35716 | Control Panel Overlay | Model ZA2111*A3059 |
| 24 | 500226 | Screw | Phillips head |
| | 35528 | Screw | Torx head; Refer to <i>Special Tools</i> section for Torx Bit and Holder Tool |
| 25 | 91176 | Lockwasher | |
| 26 | 81799 | Wash Temperature Switch | |
| 27 | 02431 | Lockwasher | |
| 28 | 52566 | Locknut | |

* Add Letter To Designate Color. L - Almond W - White

N/A = Part no longer available

Control Panel, Control Hood and Controls

Models EA2111*A3069 and ZA2111*A3069



W222P_37950

Control Panel, Control Hood and Controls

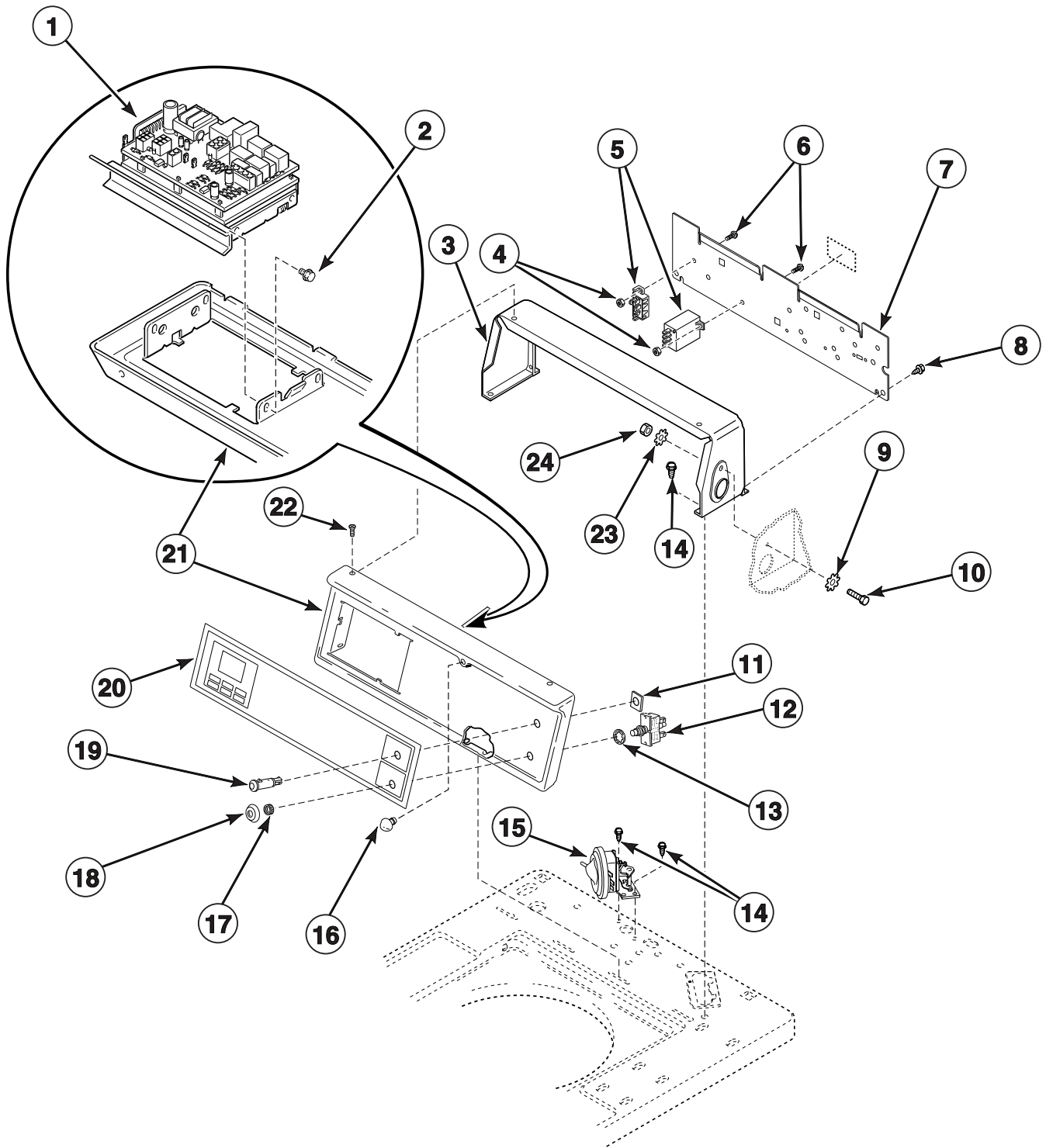
| REF | PART NO. | DESCRIPTION | COMMENTS |
|-----|----------|-------------------------|---|
| 1 | 39897 | Control Knob Assembly | |
| 2 | N/A | Setscrew | |
| 3 | 24205 | Knurled Nut | |
| 4 | N/A | Control Panel Overlay | Model ZA2111*A3069 |
| | 36971 | Control Panel Overlay | Model EA2111*A3069 |
| 5 | 500226 | Screw | Phillips head |
| | 35528 | Screw | Torx head; Refer to <i>Special Tools</i> section for Torx Bit and Holder Tool |
| 6 | 91176 | Lockwasher | |
| 7 | 37075* | Control Hood | |
| 8 | 23222 | Screw | |
| 9 | 38267 | Control Hood Rear Cover | |
| 10 | 501523 | Support | |
| 11 | 37225 | Lid Lock Control | |
| 12 | 02916 | Cap Screw | |
| 13 | M400017 | Lockwasher | |
| 14 | 23962 | Screw | |
| 15 | 02431 | Lockwasher | |
| 16 | 52566 | Locknut | |
| 17 | 81799 | Wash Temperature Switch | |
| 18 | 32518 | Indicator Light | Unbalanced Load |
| | 38281 | Indicator Light | In Use |
| | 32519 | Indicator Light | Rinse; Spin |
| 19 | 34762 | Push-on Clip | |
| 20 | 55882 | Push Button Switch | |
| 21 | 52947 | Nut | |
| 22 | 35889 | Pressure Switch | |
| 23 | 36521* | Control Panel Frame | |
| 24 | 32648 | Bumper | |
| 25 | 24206 | Knurled Nut | |
| 26 | N/A | Switch Collar | |
| 27 | 39536 | Indicator Light | |

* Add Letter To Designate Color. L - Almond W - White

N/A = Part no longer available

Control Panel, Control Hood and Controls

Models EA2921*A3059 and ZA2921*A3059



W218P_37950

Control Panel, Control Hood and Controls

| REF | PART NO. | DESCRIPTION | COMMENTS |
|-----|----------|-------------------------|---|
| 1 | 36401P | Control and Shield | |
| 2 | 501524 | Screw | |
| 3 | 37075* | Control Hood | |
| 4 | 02788 | Nut | |
| 5 | 598P3 | Electric Lid Lock Kit | |
| 6 | N/A | Screw | |
| 7 | 38267 | Control Hood Rear Panel | |
| 8 | 23222 | Screw | |
| 9 | M400017 | Lockwasher | |
| 10 | 02916 | Screw | |
| 11 | 34762 | Push-On Clip | |
| 12 | 55882 | Push Button Switch | |
| 13 | 52947 | Nut | |
| 14 | 23962 | Screw | |
| 15 | 35889 | Pressure Switch | |
| 16 | 32648 | Bumper | |
| 17 | 24206 | Knurled Nut | |
| 18 | N/A | Switch Collar | |
| 19 | 39536 | Indicator Light | Lid Switch |
| 20 | N/A | Control Panel Overlay | |
| 21 | N/A | Control Panel Frame | |
| 22 | 500226 | Screw | Phillips head |
| | 35528 | Screw | Torx head; Refer to <i>Special Tools</i> section for Torx Bit and Holder Tool |
| 23 | 02431 | Lockwasher | |
| 24 | 52566 | Locknut | |

* Add Letter To Designate Color. L - Almond W - White

N/A = Part no longer available

Models EA2921*A3000, EA2921*A3050, ZAJ920*A1102, ZAJ921*A1102, ZA2821*A1102, ZA2920*A1102, ZA2921*A1102, ZA2921*A99F4, ZA3820*A1102 and ZA3821*A1102

This exploded view diagram illustrates the assembly of a microwave oven. The components are numbered as follows:

- 1**: Microwave control panel with buttons and display.
- 2**: Small screw for panel attachment.
- 3**: Main microwave body housing.
- 4**: Small screw for side panel attachment.
- 5**: Side panel of the microwave.
- 6**: Large screw for door hinge attachment.
- 7**: Small screw for door hinge attachment.
- 8**: Two screws for door hinge attachment.
- 9**: Door hinge mechanism.
- 10**: Small screw for door latch attachment.
- 11**: Microwave door panel.
- 12**: Door latch mechanism.
- 13**: Small screw for door latch attachment.
- 14**: Small screw for door latch attachment.
- 15**: Small screw for door latch attachment.

The diagram shows the relative positions of these parts, with dashed lines indicating the assembly path. A circular inset provides a magnified view of the control panel (1) being attached to the main body (3) using screw (2).

W196P_37950

37950

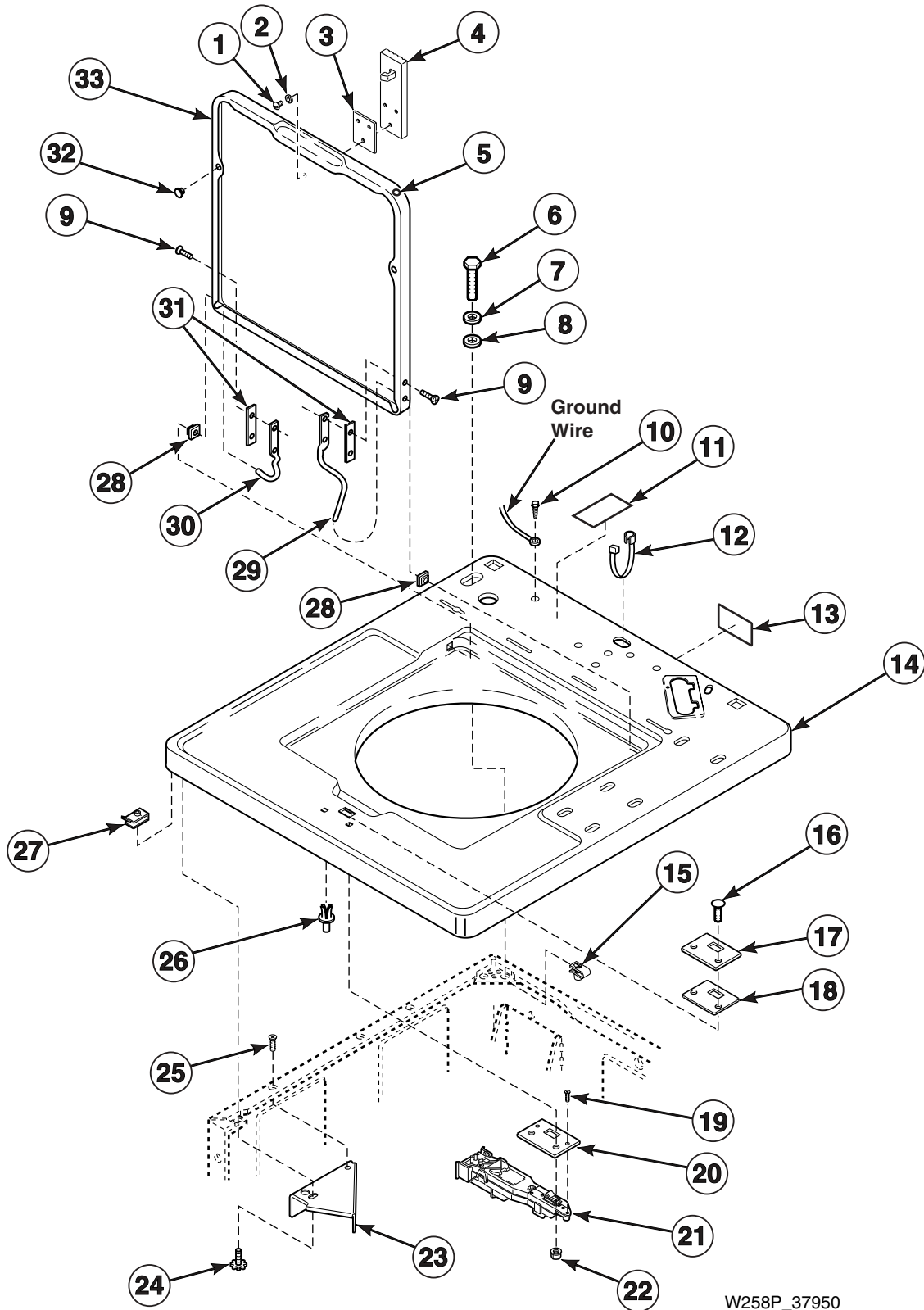
Control Panel, Control Hood and Controls

| REF | PART NO. | DESCRIPTION | COMMENTS |
|-----|----------|-------------------------|---|
| 1 | 38188P | Control and Shield | Models EA2921*A3050, ZA3820*A1102 and ZA3821*A1102 |
| | 36401P | Control and Shield | All other models |
| 2 | 501524 | Screw | |
| 3 | 37075* | Control Hood | |
| 4 | 23222 | Screw | |
| 5 | 38267 | Control Hood Rear Panel | |
| 6 | M400017 | Lockwasher | |
| 7 | 02916 | Screw | |
| 8 | 23962 | Screw | |
| 9 | 35889 | Pressure Switch | |
| 10 | 32648 | Bumper | |
| 11 | 39096 | Control Panel Overlay | Models EA2921*A3000 and EA2921*A3050 |
| | 36390 | Control Panel Overlay | All other models |
| 12 | 36097* | Control Panel Frame | |
| 13 | 500226 | Screw | Phillips head |
| | 35528 | Screw | Torx head; Refer to <i>Special Tools</i> section for Torx Bit and Holder Tool |
| 14 | 02431 | Lockwasher | |
| 15 | 52556 | Locknut | |

* Add Letter To Designate Color. L - Almond W - White

Cabinet Top, Loading Door and Lid Lock

Models EA2111*A3059, EA2111*A3069, EA2921*A3059, ZA2111*A3059, ZA2111*A3069 and ZA2921*A3059



Cabinet Top, Loading Door and Lid Lock

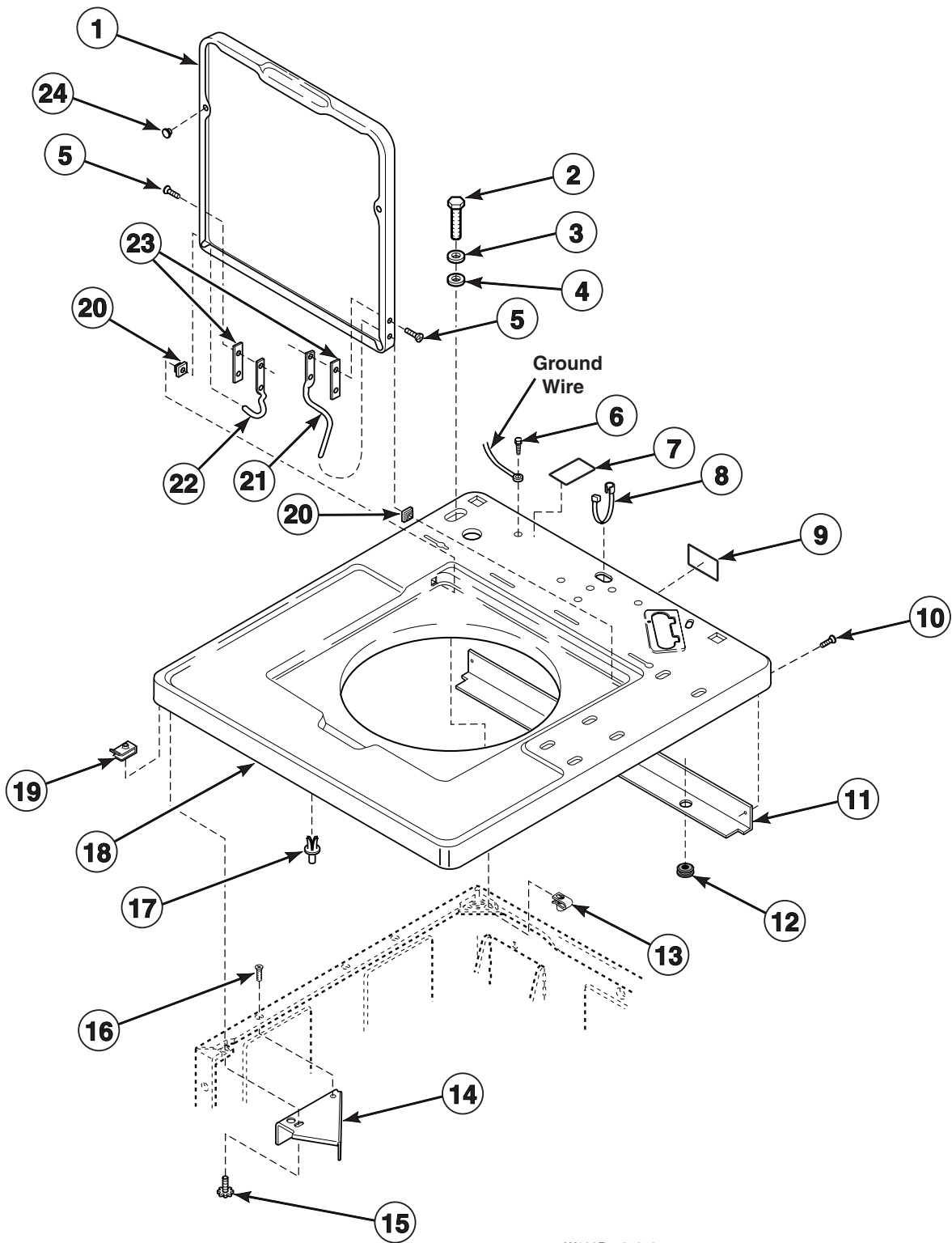
| REF | PART NO. | DESCRIPTION | COMMENTS |
|-----|----------|----------------------|--|
| 1 | Q6695 | Screw | |
| 2 | 21643 | Washer | |
| 3 | 29677 | Gasket | |
| 4 | 29674 | Latch | |
| 5 | 34153 | Plug | |
| 6 | 503673 | Screw | For added security |
| 7 | 35917 | Washer | Metal; For added security |
| 8 | 35774 | Washer | Plastic; For added security |
| 9 | 34337 | Screw | |
| 10 | 23962 | Screw | |
| 11 | 36592 | Sticker | Models EA2111*A3069 and ZA2111*A3069 |
| | 24903 | Sticker | All other models |
| 12 | 38384 | Strain Relief | Models EA2921*A3059, ZA2111*A3059 and ZA2111*A3069 |
| 13 | 505281 | Sticker | |
| 14 | N/A | Cabinet Top | |
| 15 | 27222 | Retainer Nut | For added security |
| 16 | 32184 | Screw | |
| 17 | 37828 | Cover Plate | |
| 18 | 30378 | Gasket | |
| 19 | 22649 | Screw | |
| 20 | 29676 | Plate | |
| 21 | 29678 | Lid Lock | |
| 22 | 22001 | Nut | |
| 23 | 36034 | Director Bracket | |
| 24 | 23008 | Screw and Lockwasher | |
| 25 | N/A | Screw | |
| 26 | 56534 | Support | |
| 27 | 36020 | Speed Nut | |
| 28 | 36474 | Bushing | |
| 29 | 36437 | Hinge | Right |
| 30 | 36438 | Hinge | Left |
| 31 | 34338 | Gasket | |
| 32 | 21685 | Bumper | |
| 33 | 200892*P | Loading Door | Models EA2111*A3069 and ZA2111*A3069 |
| | 200893*P | Loading Door | Models EA2111*A3059 and EA2921*A3059 |
| | N/A | Loading Door | Models ZA2111*A3059 and ZA2921*A3059 |

* Add Letter To Designate Color. L - Almond W - White

N/A = Part no longer available

Cabinet Top, Loading Door and Shield

All Models Except EA2111*A3059, EA2111*A3069, EA2921*A3059, ZA2111*A3059, ZA2111*A3069 and ZA2921*A3059



W199P__37950

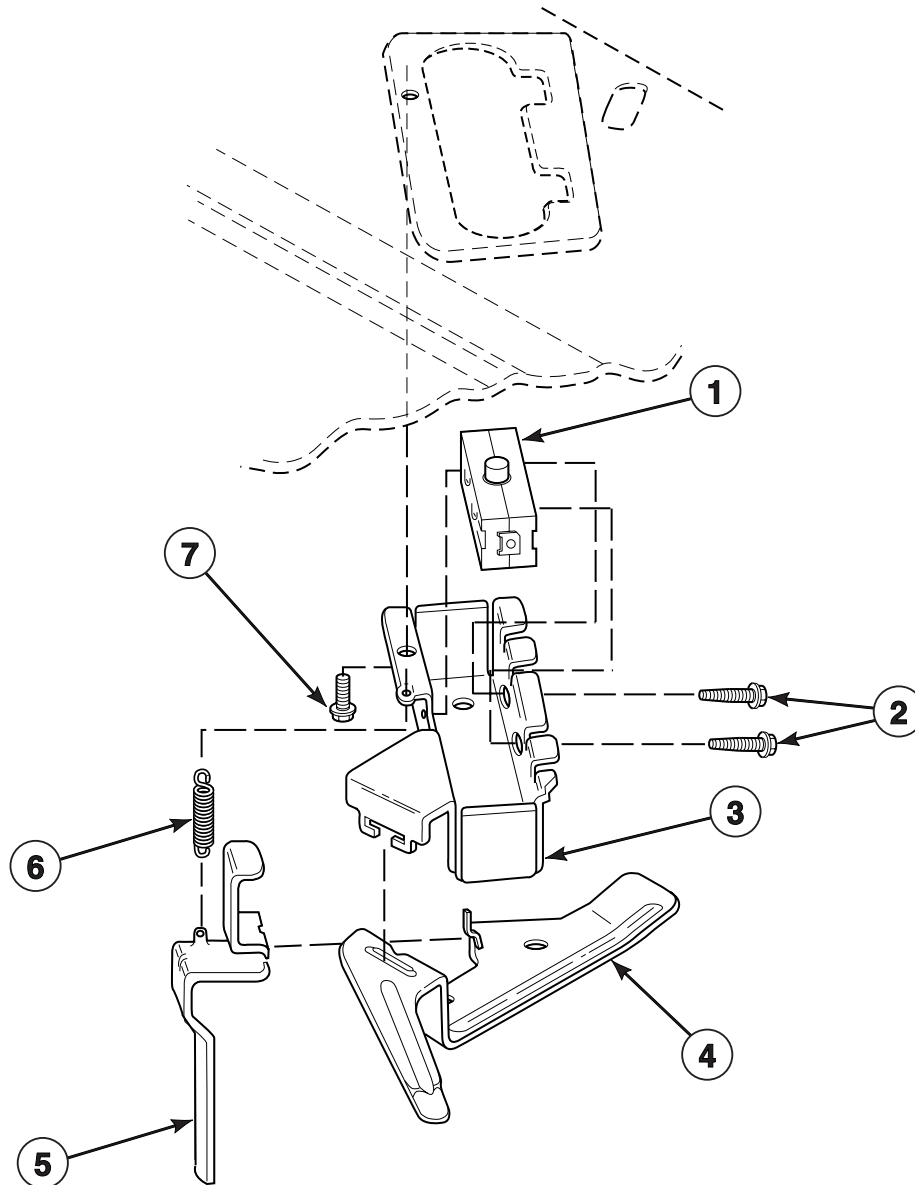
Cabinet Top, Loading Door and Shield

| REF | PART NO. | DESCRIPTION | COMMENTS |
|-----|----------|----------------------|--|
| | 34153 | Plug | Used on loading door |
| 1 | 200893* | Loading Door | |
| 2 | 503673 | Screw | For added security |
| 3 | 35917 | Washer | Metal; For added security |
| 4 | 35774 | Washer | Plastic; For added security |
| 5 | 34337 | Screw | |
| 6 | 23962 | Screw | |
| 7 | 500314 | Sticker | Models GA2210*A1102, ZAJ920*A1102, ZAJ921*A1102, ZA2020*A1102, ZA2021*A1102, ZA2120*A1102, ZA2121*A1102, ZA2210*A1102, ZA2220*A1102, ZA2221*A1102, ZA2821*A1102, ZA2920*A1102, ZA2921*A1102, ZA2921*A99F4, ZA3820*A1102 and ZA3821*A1102 |
| | 505281 | Sticker | All other models |
| 8 | 38384 | Strain Relief | All models except EA2011*A3000, EA2111*A3050, EA2111*A5400, EA2111*A5406, EA2111*A5412, EA2211*A1300, EA2211*A3000, EA2211*A3066, EA2921*A3050, ZA2110*A1102 and ZA2111*A1102 |
| 9 | 500316 | Sticker | Models GA2210*A1102, ZAJ920*A1102, ZAJ921*A1102, ZA2020*A1102, ZA2021*A1102, ZA2120*A1102, ZA2121*A1102, ZA2210*A1102, ZA2220*A1102, ZA2221*A1102, ZA2821*A1102, ZA2920*A1102, ZA2921*A1102, ZA2921*A99F4, ZA3820*A1102 and ZA3821*A1102 |
| | 505281 | Sticker | All other models |
| 10 | 27196 | Screw | Models GA2210*A1102, ZAJ920*A1102, ZAJ921*A1102, ZA2020*A1102, ZA2021*A1102, ZA2110*A1102, ZA2111*A1102, ZA2120*A1102, ZA2121*A1102, ZA2210*A1102, ZA2220*A1102, ZA2221*A1102, ZA2821*A1102, ZA2920*A1102, ZA2921*A1102, ZA2921*A99F4, ZA3820*A1102 and ZA3821*A1102 |
| 11 | 39744 | Shield | Models GA2210*A1102, ZAJ920*A1102, ZAJ921*A1102, ZA2020*A1102, ZA2021*A1102, ZA2110*A1102, ZA2111*A1102, ZA2120*A1102, ZA2121*A1102, ZA2210*A1102, ZA2220*A1102, ZA2221*A1102, ZA2821*A1102, ZA2920*A1102, ZA2921*A1102, ZA2921*A99F4, ZA3820*A1102 and ZA3821*A1102 |
| 12 | 80262 | Grommet | Models GA2210*A1102, ZAJ920*A1102, ZAJ921*A1102, ZA2020*A1102, ZA2021*A1102, ZA2110*A1102, ZA2111*A1102, ZA2120*A1102, ZA2121*A1102, ZA2210*A1102, ZA2220*A1102, ZA2221*A1102, ZA2821*A1102, ZA2920*A1102, ZA2921*A1102, ZA2921*A99F4, ZA3820*A1102 and ZA3821*A1102 |
| 13 | 27222 | Retainer Nut | For added security |
| 14 | 36034 | Director Bracket | |
| 15 | 23008 | Screw and Lockwasher | |
| 16 | N/A | Screw | |
| 17 | 56534 | Support | |
| 18 | 36122*P | Cabinet Top | Metered Models |
| | 36273*P | Cabinet Top | Nonmetered Models |
| 19 | 36020 | Speed Nut | |
| 20 | 36474 | Bushing | |
| 21 | 36437 | Hinge | Right |
| 22 | 36438 | Hinge | Left |
| 23 | 34338 | Gasket | |
| 24 | 21685 | Bumper | |

* Add Letter To Designate Color. L - Almond W - White

N/A = Part no longer available

Out-of-Balance Switch



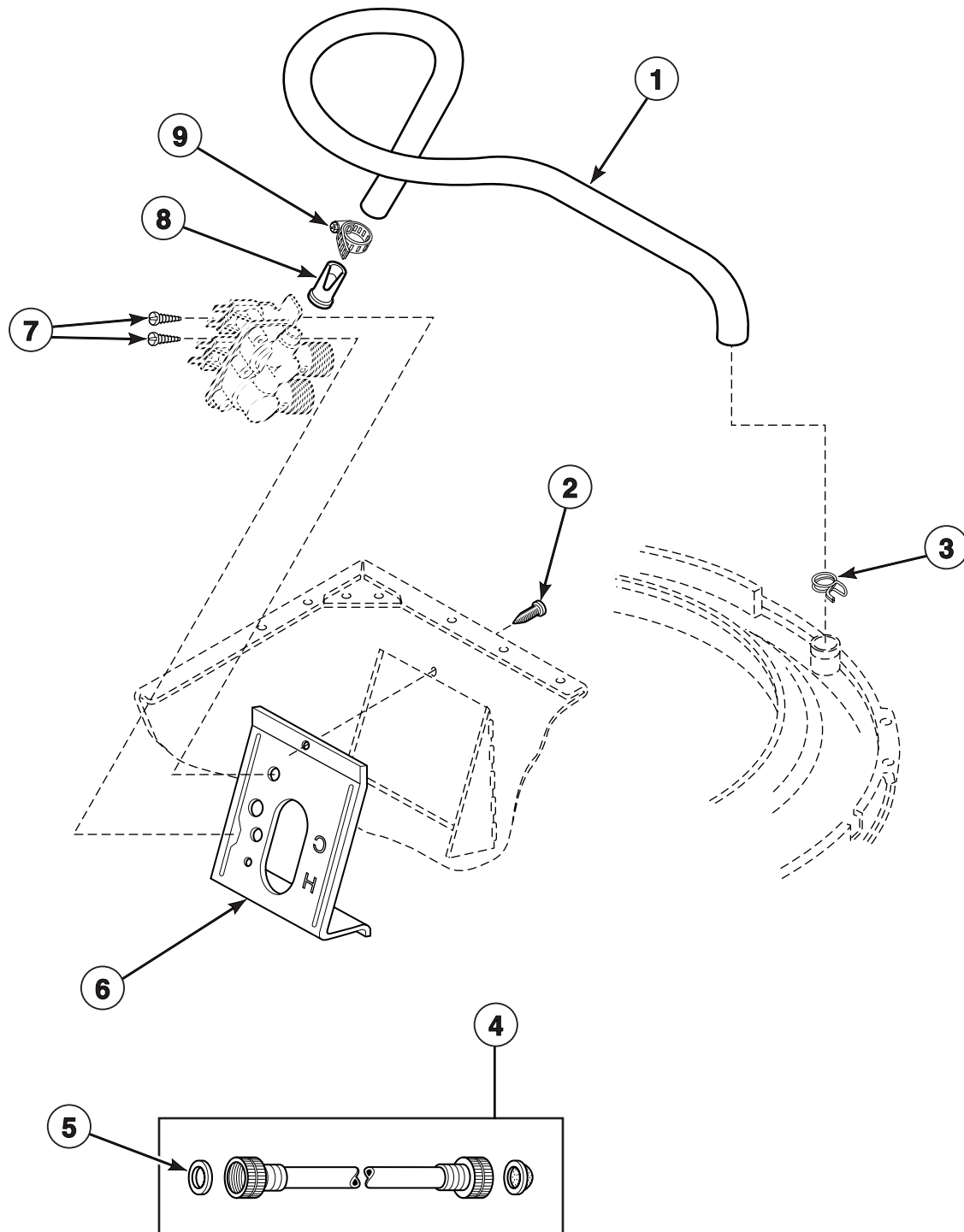
W246P_37950

Out-of-Balance Switch

| REF | PART NO. | DESCRIPTION | COMMENTS |
|-----|----------|---------------|--|
| 1 | 33445 | Switch | Models EA2921*A3000, EA2921*A3050, EA2921*A3059, ZA2821*A1102, ZA2920*A1102, ZA2921*A1102, ZA2921*A3059, ZA2921*A99F4, ZA3820*A1102, ZA3821*A1102, ZAJ920*A1102 and ZAJ921*A1102 |
| | 33527 | Switch | All other models |
| 2 | 36510 | Screw | |
| 3 | 36497P | Switch Holder | |
| 4 | 33441 | Actuator Arm | |
| 5 | 33442 | Lever | |
| 6 | 33443 | Spring | |
| 7 | 23962 | Screw | |

* Add Letter To Designate Color. L - Almond W - White

Inlet Hose, Fill Hose, Mixing Valve Mounting Bracket

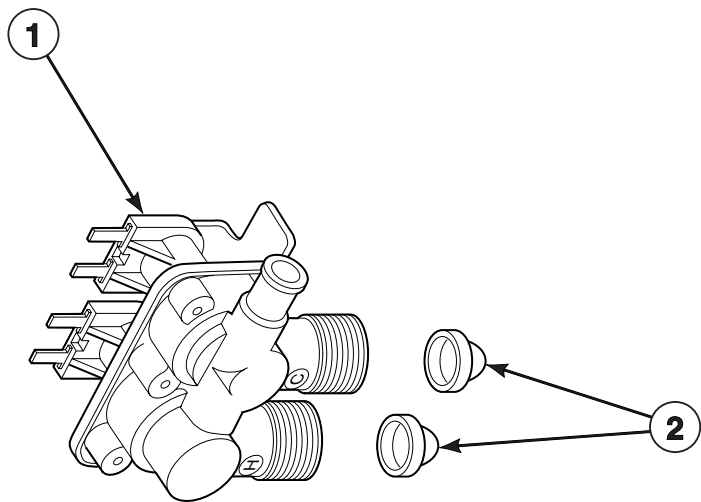


W125P_37950

Inlet Hose, Fill Hose, Mixing Valve Mounting Bracket

| REF | PART NO. | DESCRIPTION | COMMENTS |
|-----|----------|-------------------------------|-------------------|
| 1 | 38155 | Fill Hose | |
| 2 | 33562 | Screw | |
| 3 | 29210 | Hose Clamp | Gold |
| 4 | 28330P | Inlet Hose Assembly | 60 Hertz; 4 feet |
| | 20617 | Inlet Hose Assembly | 60 Hertz; 8 feet |
| | 20618 | Inlet Hose Assembly | 60 Hertz; 10 feet |
| | 38349P | Inlet Hose Assembly | 50 Hertz; 4 feet |
| | 37380 | Inlet Hose Assembly | 50 Hertz; 8 feet |
| | 37381 | Inlet Hose Assembly | 50 Hertz; 10 feet |
| 5 | 20290 | Washer | |
| 6 | 39407 | Mixing Valve Mounting Bracket | |
| 7 | 23962 | Screw | |
| 8 | 34500 | Backflow Preventer | |
| 9 | 36801 | Hose Clamp | |

Mixing Valve Assembly



W284P_37950

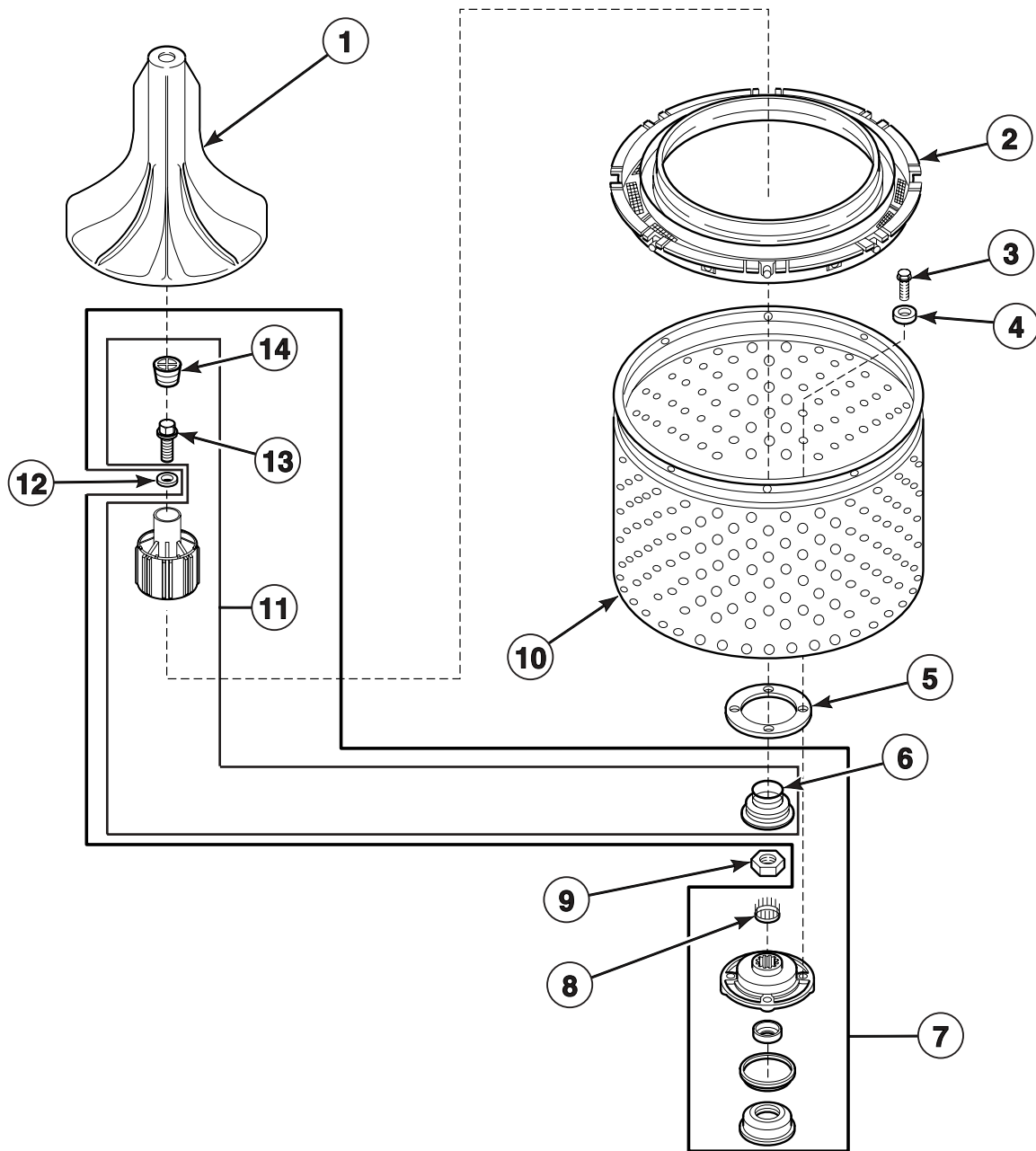
Mixing Valve Assembly

| REF | PART NO. | DESCRIPTION | COMMENTS |
|-----|----------|-----------------------|--|
| 1 | 34997 | Mixing Valve Assembly | Models EA2011*A3000, EA2011*A3050, EA2111*A3000, EA2111*A3050, EA2111*A5400, EA2111*A5406, EA2111*A5412, EA2111*A5417, EA2211*A3000, EA2211*A3066, EA2921*A3000 and EA2921*A3050 |
| | N/A | Mixing Valve Assembly | Models EA2111*A3059, EA2111*A3069, EA2921*A3059, ZA2111*A3059, ZA2111*A3069 and ZA2921*A3059 |
| | 34963 | Mixing Valve Assembly | All other models |
| 2 | F270200 | Inlet Screen | |

* Add Letter To Designate Color. L - Almond W - White

N/A = Part no longer available

Agitator, Drive Bell, Seal Kit, Washtub and Hub

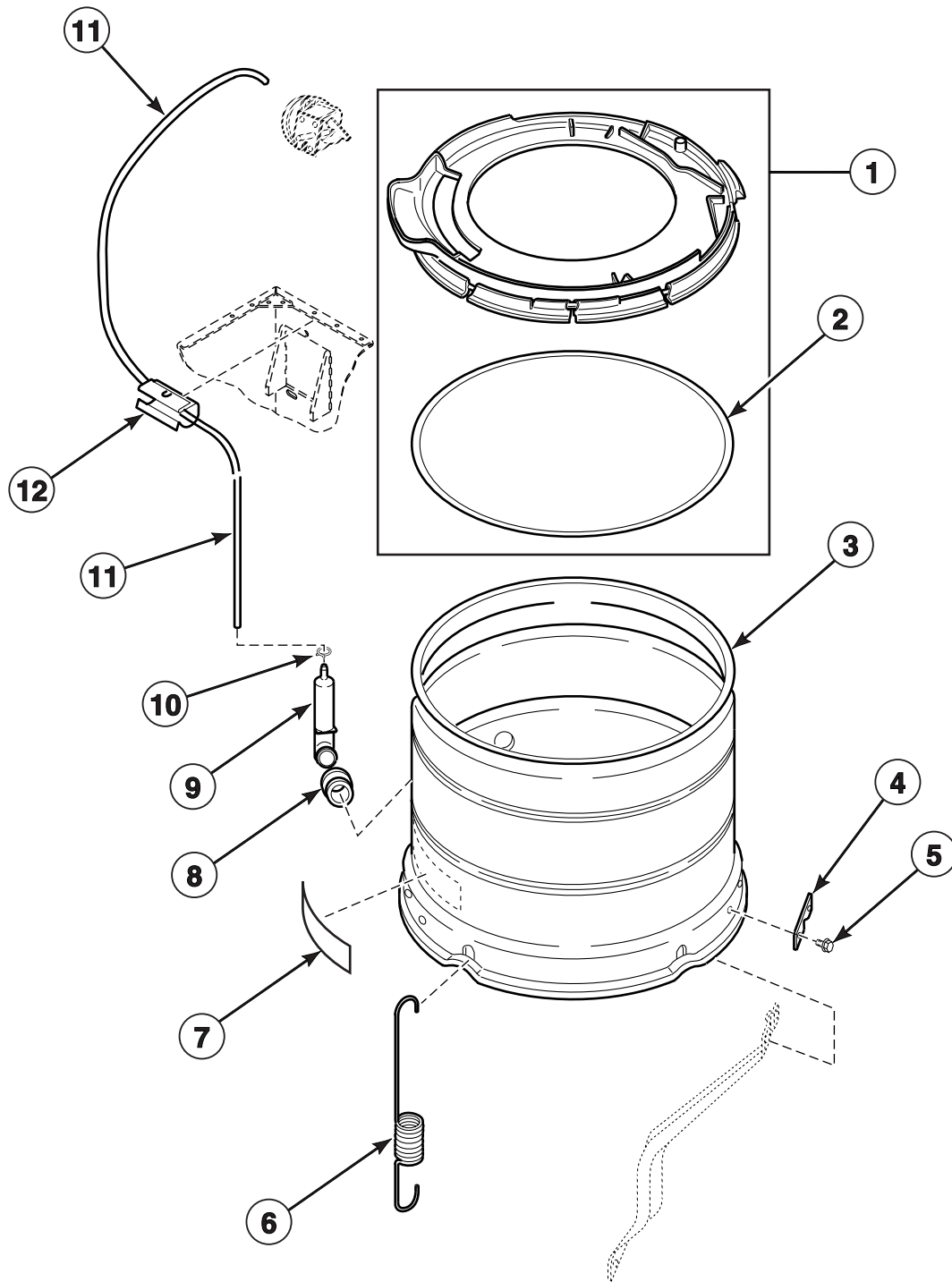


W227P_37950

Agitator, Drive Bell, Seal Kit, Washtub and Hub

| REF | PART NO. | DESCRIPTION | COMMENTS |
|-----|----------|-------------------------|---|
| 1 | 33513 | Agitator | |
| 2 | 32990 | Clothes Guard | |
| 3 | 27202 | Cap Screw | |
| 4 | 28094 | Gasket | |
| 5 | 39122 | Gasket | |
| 6 | 36425 | Seal | |
| 7 | 495P3 | Hub and Seal Kit | Includes items 8, 11 and 32857 Cover Gasket |
| 8 | 29728 | Splined Insert | |
| 9 | 29220 | Locknut | |
| 10 | 39252P | Washtub | Porcelain |
| | 39387P | Washtub | Stainless steel |
| 11 | 39508 | Drive Bell and Seal Kit | Includes items 6, 13 and 14 |
| 12 | 36472 | O-Ring | |
| 13 | 39432 | Shoulder Screw | |
| 14 | 36511 | Plug | |

Outer Tub, Cover and Pressure Hose



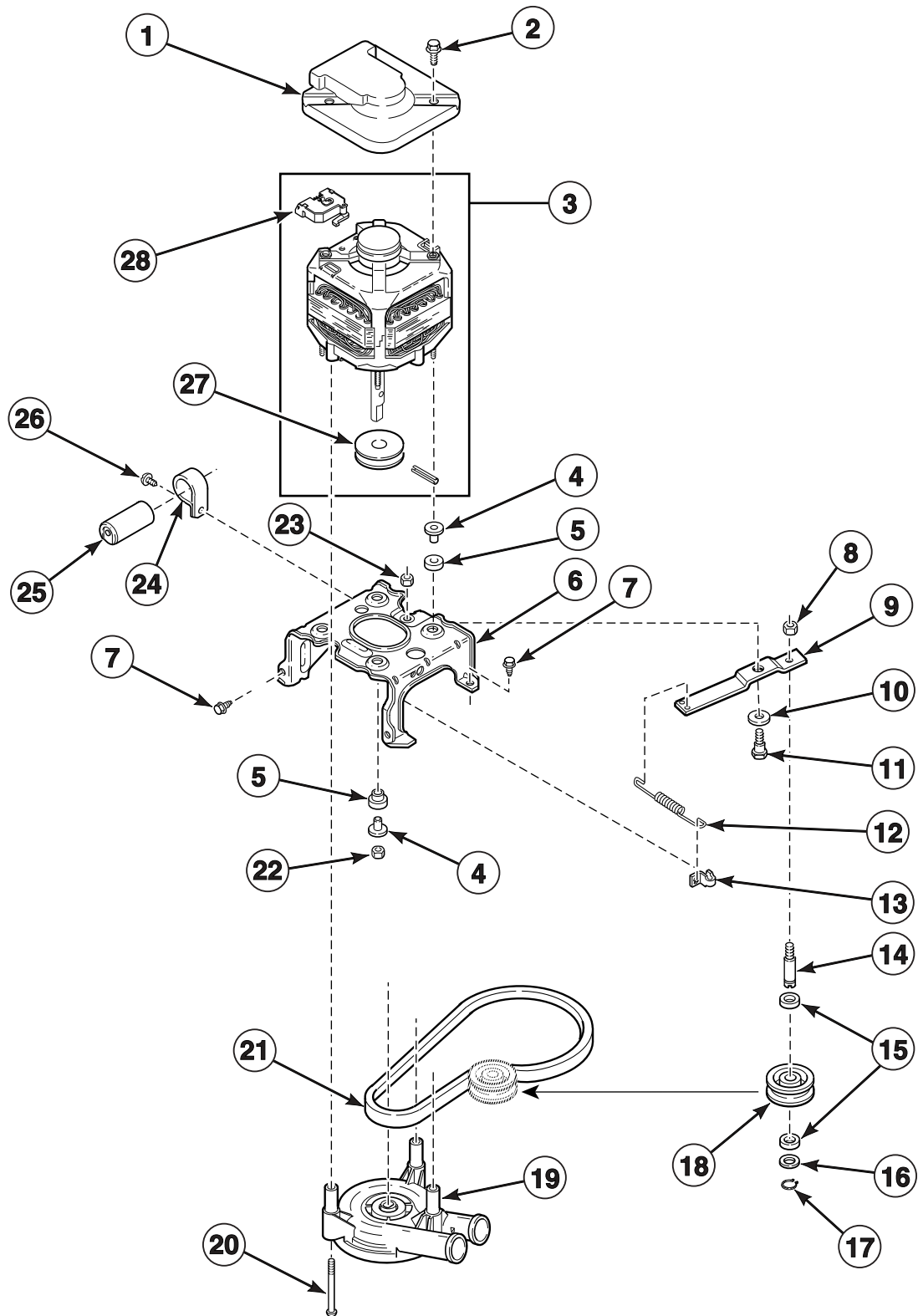
TLW1470P_37950

Outer Tub, Cover and Pressure Hose

| REF | PART NO. | DESCRIPTION | COMMENTS |
|-----|----------|------------------|--|
| 1 | 36025P | Outer Tub Cover | Includes Item 2 |
| 2 | 32857 | Gasket | |
| 3 | 34439P | Outer Tub | |
| 4 | 27926 | Leg Plate | |
| 5 | 35369 | Screw | |
| 6 | 35947 | Centering Spring | |
| 7 | 500049 | Sticker | |
| 8 | 29175 | Grommet | |
| 9 | 30907 | Pressure Bulb | |
| 10 | 39282 | Hose Clamp | |
| 11 | 39125 | Pressure Hose | Models ZAJ920*A1102, ZAJ921*A1102, ZA2921*A99F4, EA2921*A3000, EA2921*A3050, EA2921*A3059, ZA2821*A1102, ZA3820*A1102, ZA3821*A1102, ZA2920*A1102, ZA2921*A1102 and ZA2921*A3059 |
| | 39124 | Pressure Hose | All other models |
| 12 | 36985 | Clip | |

* Add Letter To Designate Color. L - Almond W - White

Motor, Mounting Bracket, Belt, Idler Assembly and Pump



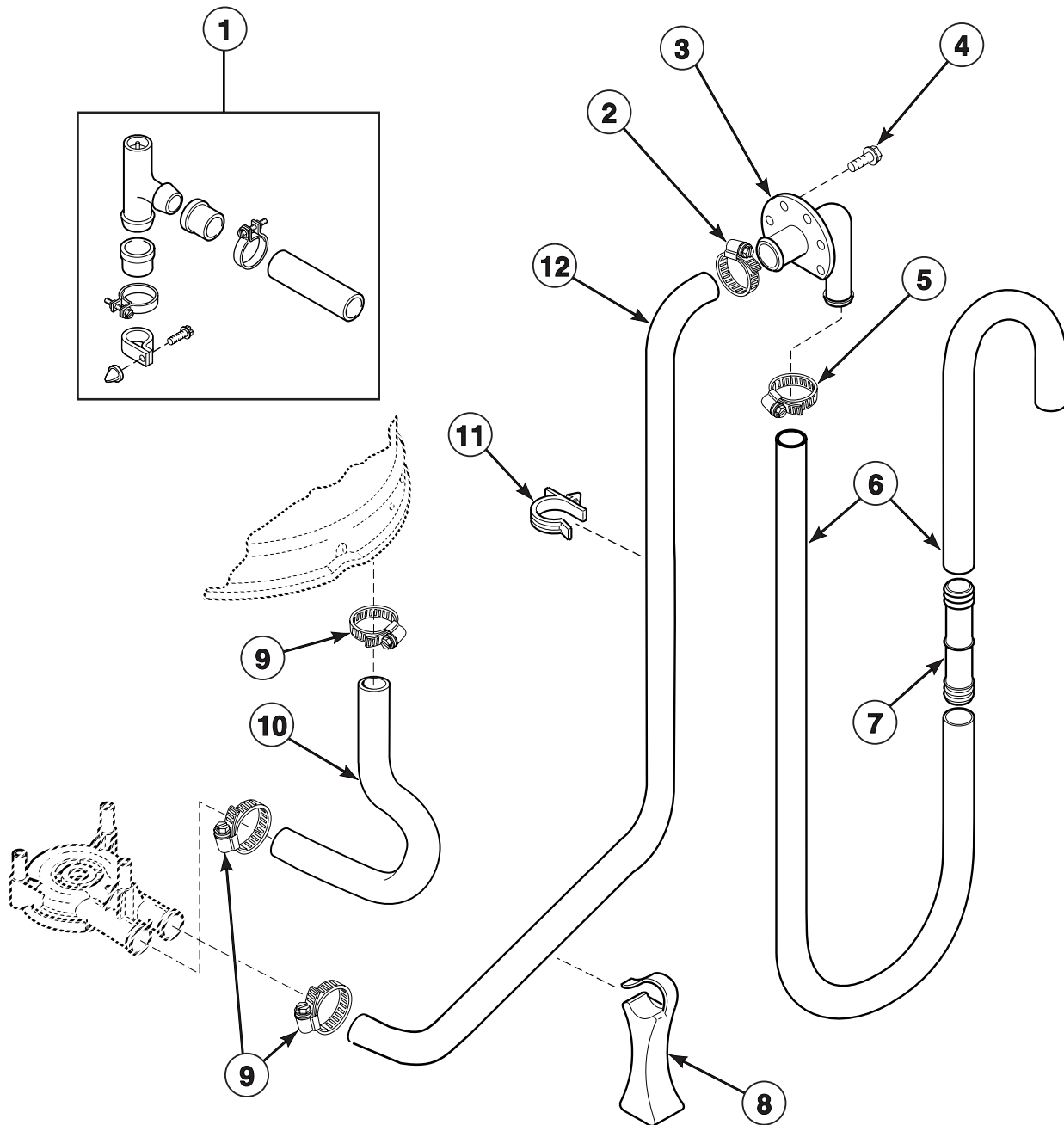
W263P_37950

Motor, Mounting Bracket, Belt, Idler Assembly and Pump

| REF | PART NO. | DESCRIPTION | COMMENTS |
|-----|----------|------------------------|---|
| 1 | 34754 | Motor Shield | |
| 2 | 36639 | Screw | |
| 3 | 37540 | Motor Assembly | 100 Volt/50 Hertz; 1 speed |
| | 38034P | Motor Assembly | 120 Volt/60 Hertz; 2 speed |
| | 38035P | Motor Assembly | 120 Volt/60 Hertz; 2 speed with capacitor |
| | 35030P | Motor Assembly | 240 Volt/50-60 Hertz; 1 speed |
| | 37543 | Motor Assembly | 240 Volt/50 Hertz; 2 speed |
| 4 | 34791 | Motor Mount Post | |
| 5 | 34788 | Motor Mount | Rubber |
| 6 | 37415 | Motor Mounting Bracket | |
| 7 | 503661 | Screw | |
| 8 | 28803 | Locknut | |
| 9 | 37443 | Idler Lever | |
| 10 | 81392 | Washer | |
| 11 | 27229 | Shoulder Bolt | |
| 12 | 37606 | Idler Lever Spring | |
| 13 | 28849 | Clip | |
| 14 | 28802 | Idler Shaft | |
| 15 | 29443 | Washer | Felt |
| 16 | 52549 | Washer | Nylatron |
| 17 | 23748 | Retainer Ring | |
| 18 | 28800 | Idler Pulley | |
| 19 | 200937P | Pump Assembly | |
| 20 | 34565 | Screw | |
| 21 | 28808 | Belt | 60 Hertz; Agitate and Spin |
| | 35517 | Belt | 50 Hertz; Agitate and Spin |
| 22 | 35423 | Nut | |
| 23 | 52566 | Locknut | |
| 24 | 37535 | Capacitor Clamp | |
| 25 | 37377 | Capacitor | |
| 26 | 52909 | Screw | |
| 27 | N/A | Motor Pulley | |
| 28 | 35632 | Motor Switch | |

N/A = Part no longer available

Pump Bracket, Hoses and Siphon Break Kit

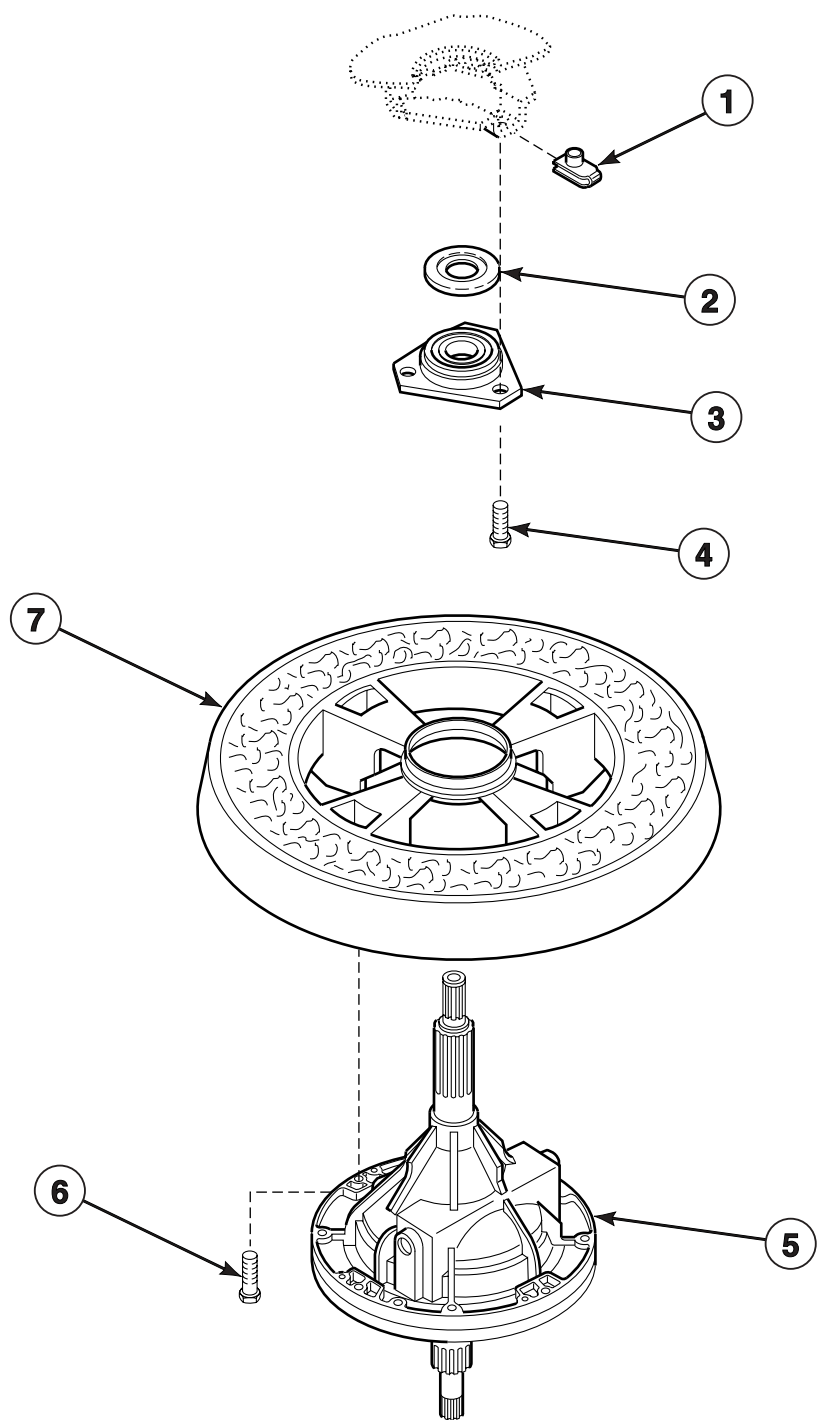


W219P_37950

Pump Bracket, Hoses and Siphon Break Kit

| REF | PART NO. | DESCRIPTION | COMMENTS |
|-----|----------|--------------------|--|
| 1 | 562P3 | Siphon Break Kit | Kit must be installed in drain hose if drain receptacle is lower than cabinet top of washer |
| 2 | 20391 | Hose Clamp | |
| 3 | 36990 | Drain Hose Elbow | |
| 4 | 52909 | Screw | |
| 5 | 20211 | Hose Clamp | |
| 6 | 28293 | Drain Hose | |
| 7 | 25863 | Hose Coupler | Use to splice hose. If drain hose must be shortened, cut hose between molded end and molded elbow. |
| 8 | 36522 | Hose Support | |
| 9 | 36802 | Hose Clamp | |
| 10 | 35752 | Tub-to-Pump Hose | |
| 11 | 36014 | Hose Clip | |
| 12 | 34581 | Pump-to-Elbow Hose | |

Transmission Assembly and Balance Ring



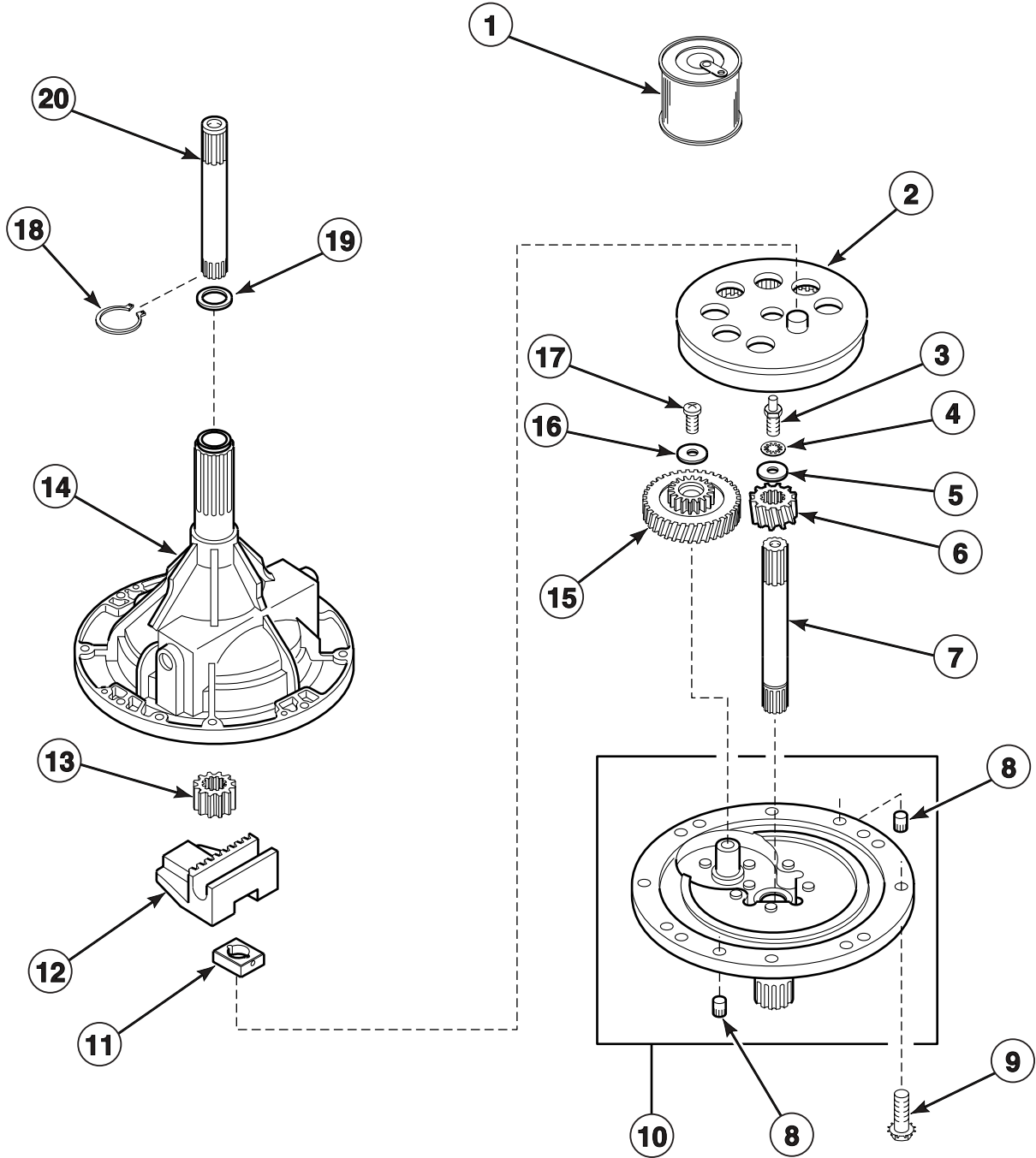
W234P_37950

Transmission Assembly and Balance Ring

| REF | PART NO. | DESCRIPTION | COMMENTS |
|-----|----------|--------------------------|--|
| | 27604P | Anti-Seize Compound | Apply to both upper and lower transmission tubes |
| 1 | 27222 | Retainer Nut | |
| 2 | 27187 | Flinger | Through Serial No. 9510053576 |
| 3 | 27182 | Bearing Housing Assembly | |
| 4 | 36991 | Screw | |
| 5 | 34526P | Transmission Assembly | |
| 6 | N/A | Screw | |
| 7 | 34731 | Balance Ring | |

N/A = Part no longer available

34526P Transmission Assembly

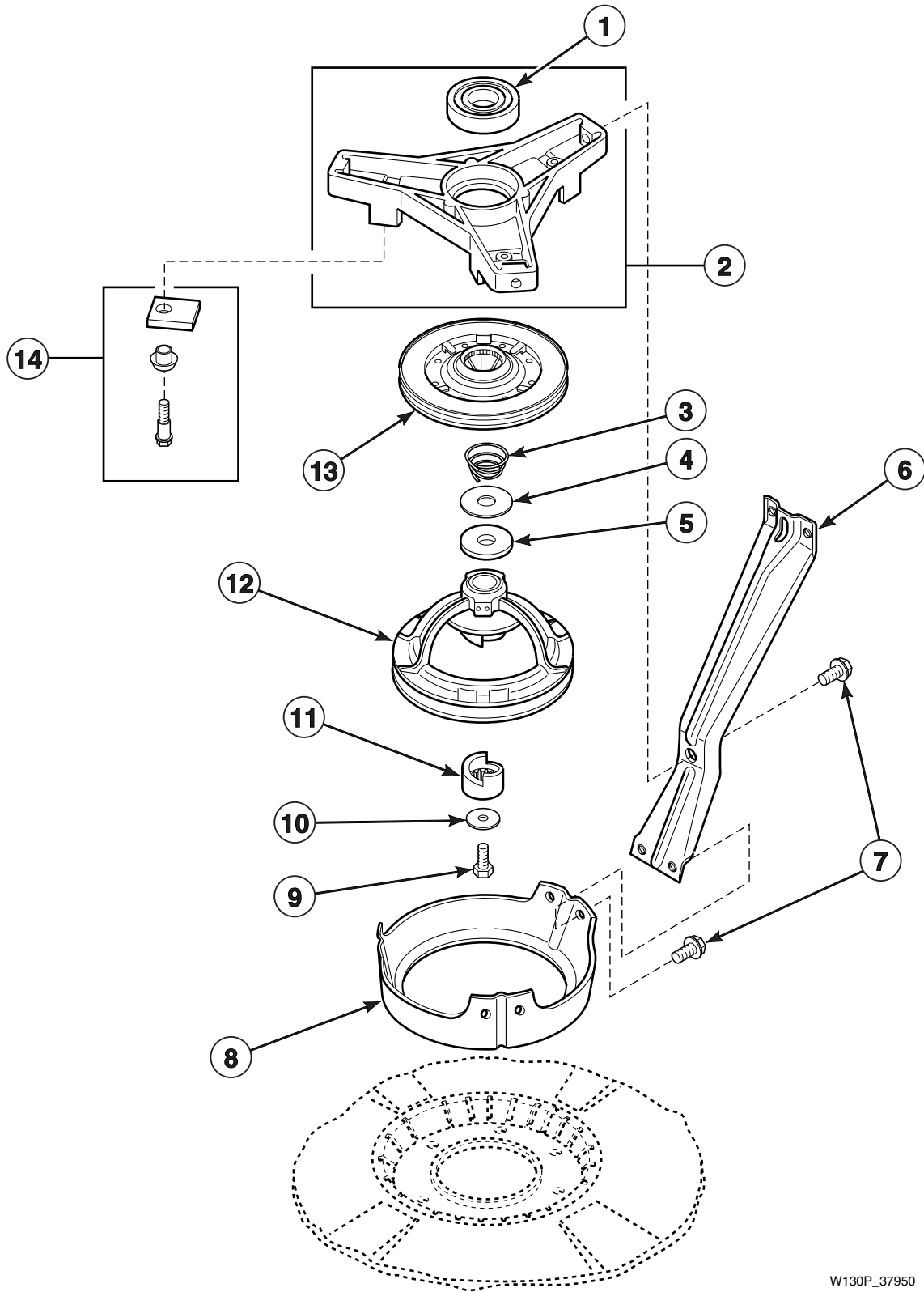


W157P_37950

34526P Transmission Assembly

| REF | PART NO. | DESCRIPTION | COMMENTS |
|-----|----------|-----------------------------|---|
| | 37577P | Sealant | Use between transmission case and cover |
| 1 | 27243P | Transmission Oil | 1 fill |
| 2 | 26577 | Internal Gear | |
| 3 | 27030 | Special Screw | |
| 4 | 21456 | Lockwasher | |
| 5 | 26509 | Washer | |
| 6 | 36562 | Drive Pinion | |
| 7 | 34853 | Input Shaft | |
| 8 | 27172 | Dowel Pin | Through Serial No. 9404069378 |
| 9 | 32814 | Screw | |
| 10 | 38290P | Transmission Cover Assembly | |
| 11 | 26493 | Slide | |
| 12 | 31526 | Rack | |
| 13 | 27003 | Agitator Pinion | |
| 14 | 33223P | Transmission Case Assembly | |
| 15 | 29161 | Reduction Gear | |
| 16 | 29260 | Washer | |
| 17 | 29273 | Screw | |
| 18 | 27197 | Retainer Ring | |
| 19 | 35092 | Washer | |
| 20 | 36570 | Output Shaft | |

Bearing Housing, Brake, Pulley and Pivot Dome



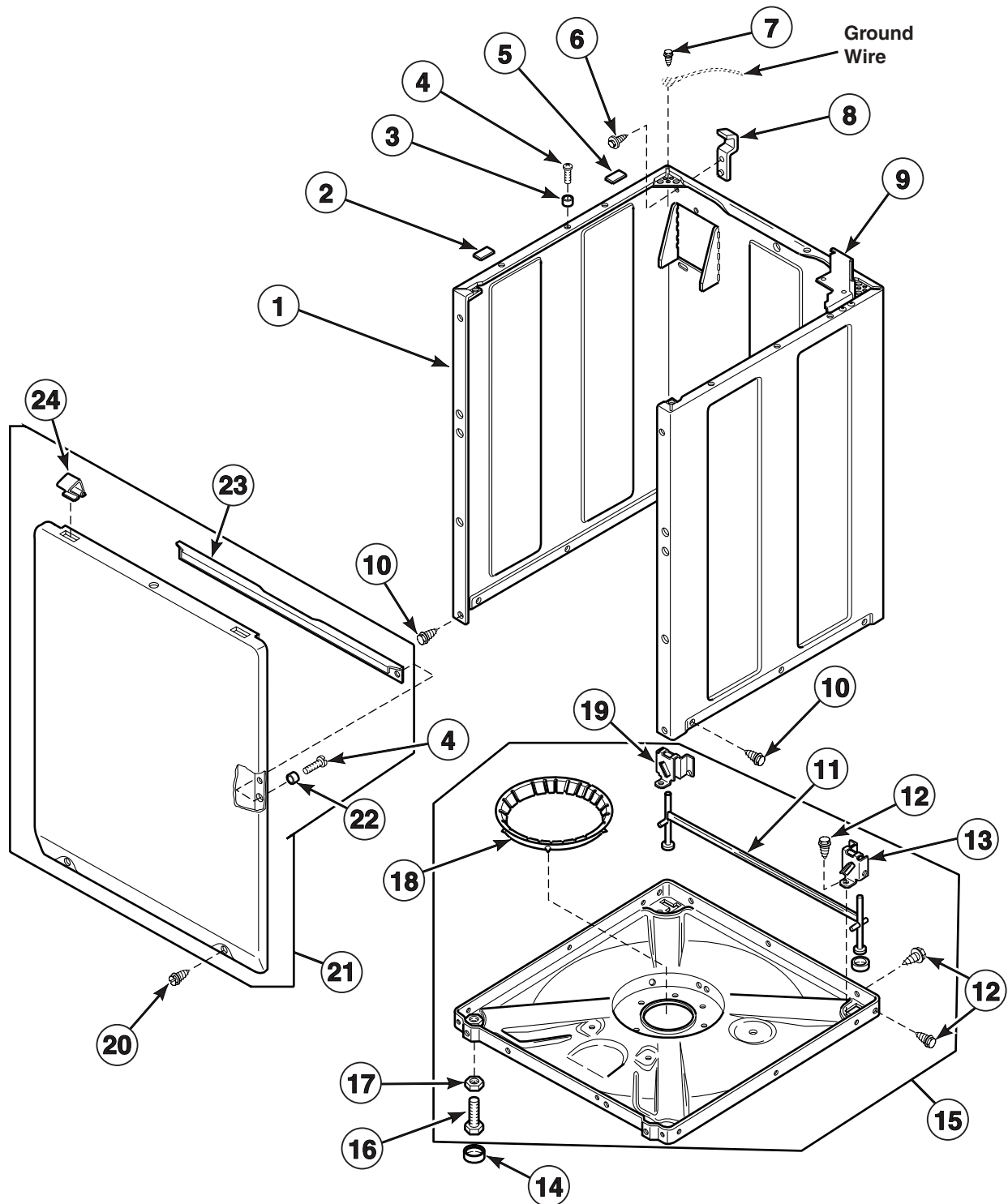
W130P_37950

Bearing Housing, Brake, Pulley and Pivot Dome

| REF | PART NO. | DESCRIPTION | COMMENTS |
|-----|----------|--------------------------|--|
| | 26594P | Silicone Lubricant | Apply a small amount to each new brake pad |
| 1 | 28944R | Bearing | |
| 2 | 35746 | Bearing Housing Assembly | |
| 3 | 33435 | Spring | |
| 4 | 35535 | Washer | Thin |
| 5 | 27015 | Washer | Thick |
| 6 | N/A | Support Leg | |
| 7 | 35369 | Screw | |
| 8 | 34470 | Pivot Dome | |
| 9 | 27220 | Screw | |
| 10 | 26509 | Washer | |
| 11 | 27018 | Helix | |
| 12 | 34923 | Pulley Assembly | 60 Hertz |
| | 35310 | Pulley Assembly | 50 Hertz |
| 13 | 38505P | Brake | |
| 14 | 548P3 | Brake Pad Kit | Includes 3 pads, sleeves and screws |

N/A = Part no longer available

Front Panel, Base Assembly and Cabinet Assembly



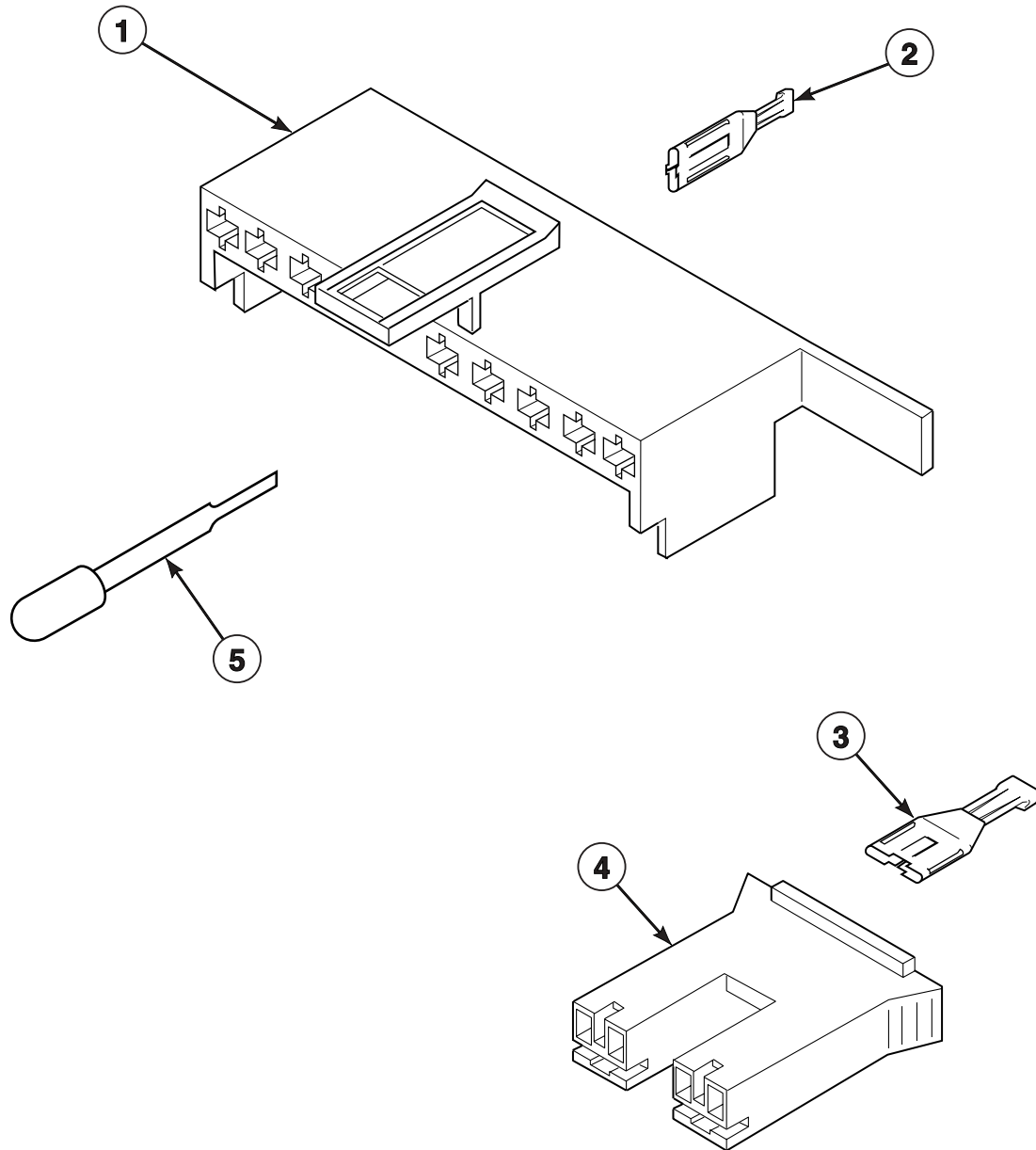
W200P_37950

Front Panel, Base Assembly and Cabinet Assembly

| REF | PART NO. | DESCRIPTION | COMMENTS |
|-----|----------|--|--|
| 1 | 38612*P | Cabinet Assembly | Includes item 9 |
| 2 | 56128 | Bumper Pad | Thin |
| 3 | 56079 | Guide Lug | |
| 4 | 39733 | Screw | |
| 5 | 36226 | Bumper Pad | Thick |
| 6 | 51780 | Screw | |
| 7 | 23962 | Screw | |
| 8 | 27103 | Hinge | |
| 9 | 35867 | Mounting Bracket | Metered models |
| 10 | 27196 | Screw | |
| 11 | 34443 | Leveling Leg and Stabilizer Bar Assembly | |
| 12 | 35148 | Screw | |
| 13 | 36036 | Bracket | Right |
| 14 | 34318 | Rubber Foot | |
| 15 | 36599P | Base Assembly | Includes items 11, 12, 13, 16, 17, 18 and 19 |
| 16 | 34319 | Leveling Leg | |
| 17 | 21899 | Locknut | |
| 18 | 36108 | Snubber Pad and Isolator Assembly | |
| 19 | 36037 | Bracket | Left |
| 20 | 27196 | Hex Screw | |
| | 35527 | Torx Screw | Refer to <i>Special Tools</i> section for Torx bit and holder tool |
| 21 | 34656*P | Front Panel Assembly | Includes items 23, 24 and attaching hardware |
| 22 | 28102 | Guide Lug | |
| 23 | 35097 | Brace | |
| 24 | 35865 | Hold-Down Clip | |

* Add Letter To Designate Color. L - Almond W - White

Mixing Valve and Motor Disconnect Blocks, Terminals and Terminal Extractor Tool

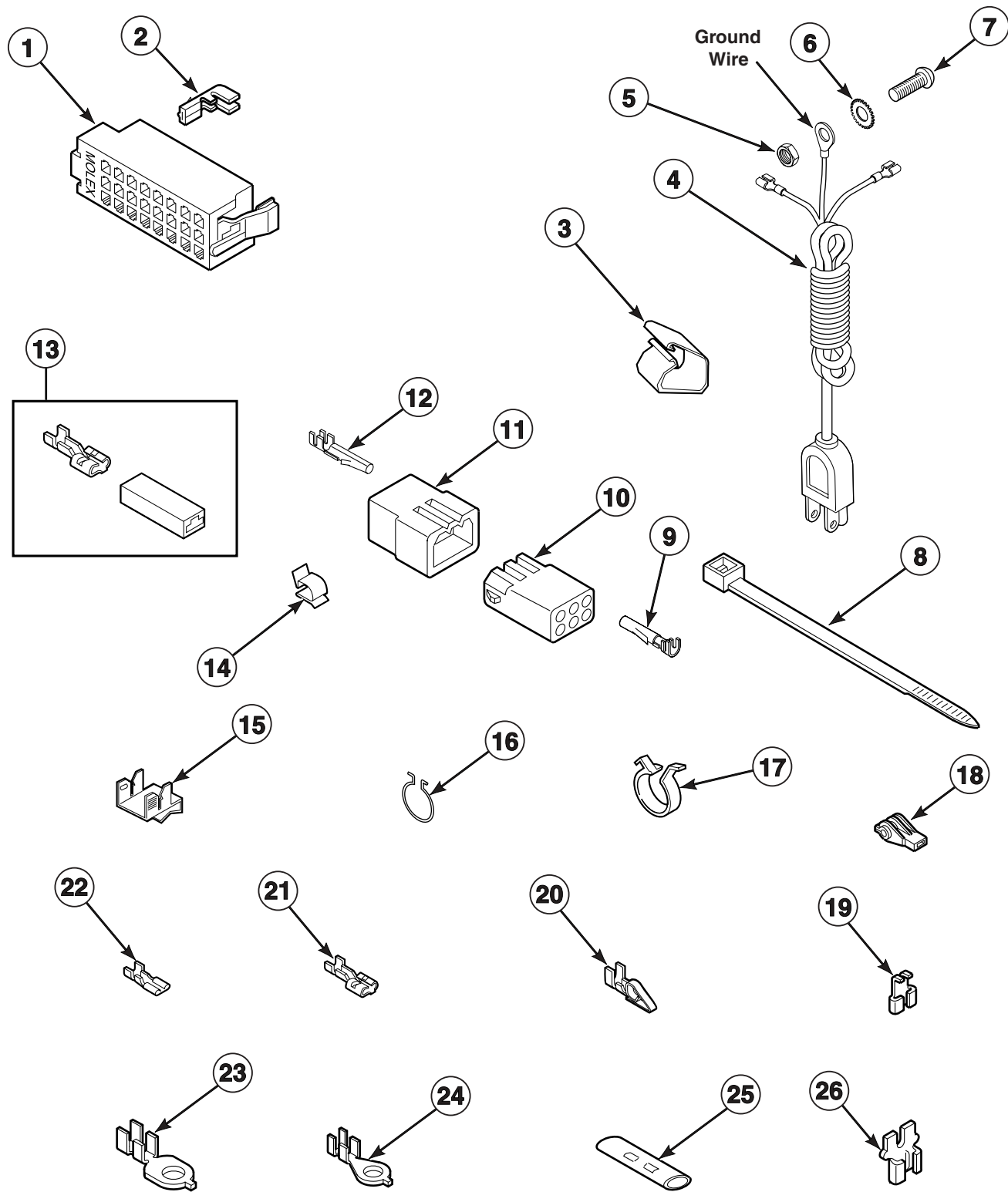


W134PZ3A_37950

Mixing Valve and Motor Disconnect Blocks, Terminals and Terminal Extractor Tool

| REF | PART NO. | DESCRIPTION | COMMENTS |
|-----|----------|-------------------------|------------------------------|
| 1 | 34677 | Molex Housing | Motor |
| 2 | 00188 | Molex Terminal | For 1- or 2-wire application |
| 3 | 00121 | Spade Terminal | 1/4 Inch |
| 4 | 34675 | Amp Housing | Mixing valve; Natural |
| | 34676 | Amp Housing | Mixing valve; Red |
| 5 | 283P4 | Terminal Extractor Tool | |

Power Cord and Terminals



W203P_37950

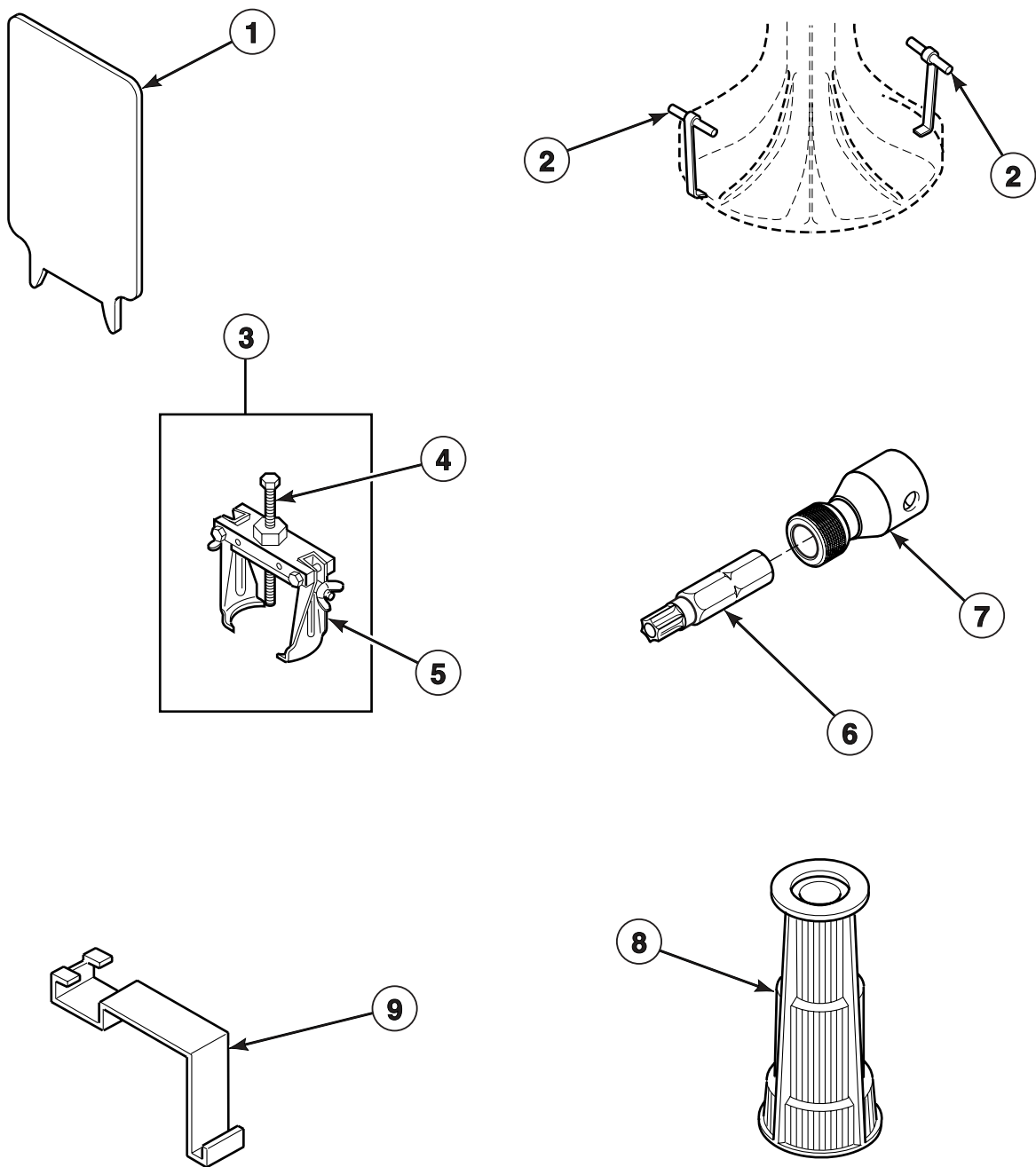
Power Cord and Terminals

| REF | PART NO. | DESCRIPTION | COMMENTS |
|-----|----------|-------------------------------|--|
| 1 | 32746 | Molex Housing | Right hand |
| | 34123 | Molex Housing | Left hand |
| 2 | 00188 | Molex Terminal | Use for 1- or 2-wire application |
| 3 | N/A | Harness Clip | |
| 4 | 38362 | Power Cord | Models EA2011*A3000, EA2111*A3000, EA2211*A3000 and EA2921*A3000 |
| | 36770 | Power Cord | Models EA2011*A3050, EA2111*A3050 and EA2921*A3050 |
| | 38363 | Power Cord | Models EA2111*A5400, EA2111*A5406, EA2111*A5412 and EA2111*A5417 |
| | 39404 | Power Cord | Models EA2211*A1200, EA2211*A1300, GA2210*A1102, ZA2110*A1102, ZA2111*A1102, ZA2120*A1102, ZA2121*A1102, ZA2210*A1102, ZA2220*A1102 and ZA2221*A1102 |
| | N/A | Power Cord | Models EA2111*A3059, EA2111*A3069, EA2921*A3059, ZA2111*A3059, ZA2111*A3069 and ZA2921*A1102 |
| | 34458 | Power Cord | All other models |
| 5 | 03673 | Nut | |
| 6 | 21735 | Lockwasher | |
| 7 | 20267 | Screw | |
| 8 | 55881 | Wire Tie | |
| 9 | 00117 | Terminal | Female |
| 10 | 26302 | Terminal Block | 1 circuit |
| | 26708 | Terminal Block | 6 circuit |
| | 26163 | Terminal Block | 9 circuit |
| 11 | 26301 | Terminal Block | 1 circuit |
| | 23041 | Terminal Block | 6 circuit |
| | 23033 | Terminal Block | 9 circuit |
| 12 | 00116 | Terminal | Male |
| 13 | 00234 | Terminal and Housing Assembly | |
| 14 | 21036 | Cable Clip | |
| 15 | 00161 | Ground Clip | |
| 16 | 51291 | Wire Clip | |
| 17 | 504034 | Wire Clip | |
| 18 | 70210 | Plastic Insulator | |
| 19 | 00120 | Flag Terminal | Right Angle |
| 20 | N/A | Spade Terminal | Female; 1/4 inch |
| 21 | 00223 | Spade Terminal | Large spade |
| 22 | 00112 | Spade Terminal | Small spade |
| 23 | 00113 | Eyelet Terminal | 1/4-inch ring |
| 24 | 00110 | Eyelet Terminal | Small shank |
| 25 | 21091 | Connector | |
| 26 | 29673 | Double Connector | |

* Add Letter To Designate Color. L - Almond W - White

N/A = Part no longer available

Special Tools

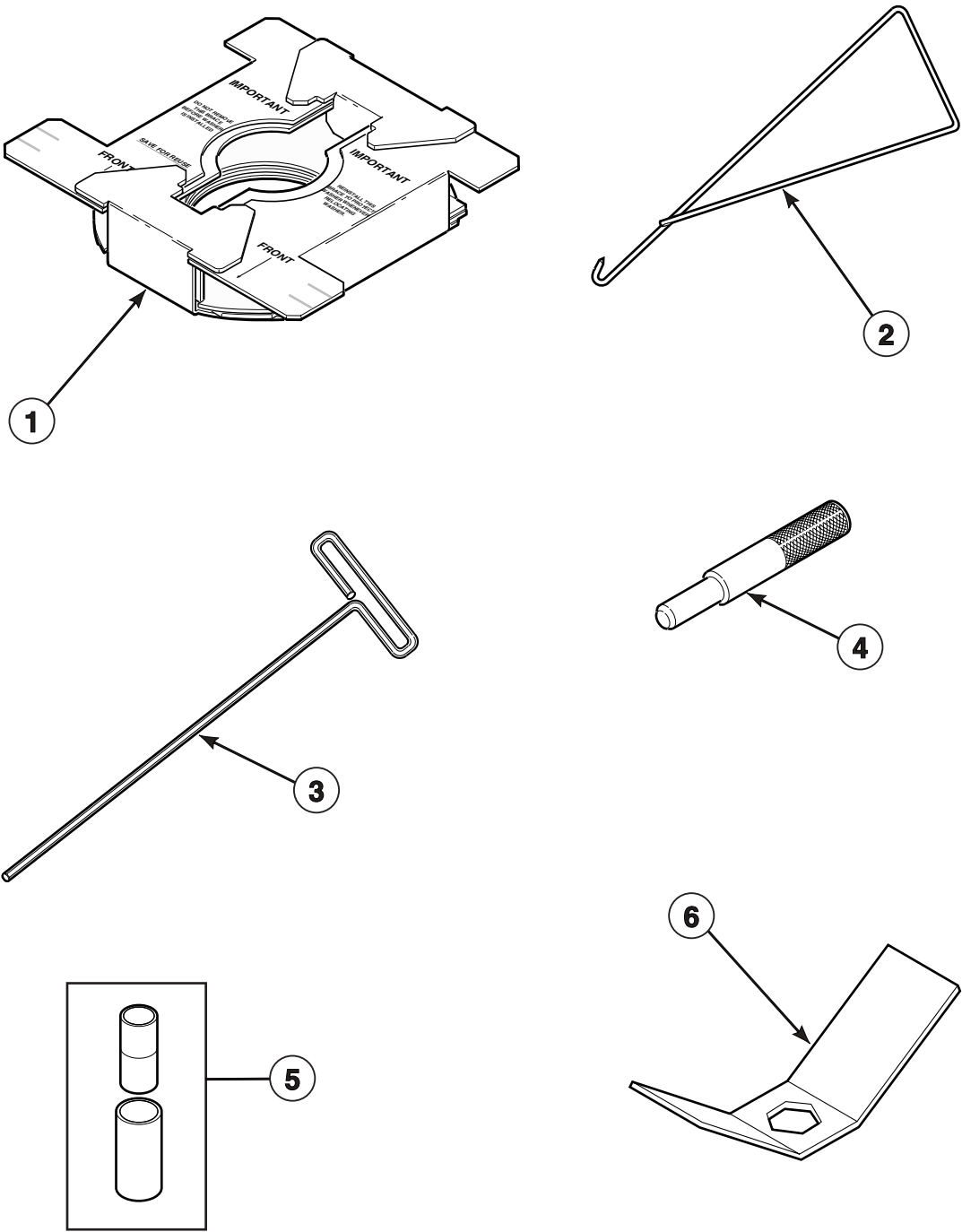


W279P_37950

Special Tools

| REF | PART NO. | DESCRIPTION | COMMENTS |
|-----|----------|---------------------------------|--|
| 1 | 272P4 | Lid Switch Tool | Use to install lid switch |
| 2 | 254P4P | Agitator Hooks | Use to remove agitator from drive bell; Set of two |
| 3 | 294P4 | Bell Tool | For removal and installation of drive bell to transmission shaft |
| 4 | 294P4B | Drive Bell Bolt | To update item 3 |
| 5 | 294P4A | Drive Bell Arms | To update item 3 |
| 6 | 281P4 | T15 Tamper Resistant Bit | For removal and installation of control hood security screws |
| | 282P4 | T25 Tamper Resistant Bit | For removal and installation of pump and front panel attaching screws |
| 7 | 24161 | Torx Bit Holder | 3/8-inch drive |
| 8 | 293P4 | Seal Tool | For installation of 36425 Seal |
| 9 | 273P4 | Outer Tub Cover and Gasket Tool | Use to remove 36025P outer tub cover and install 32857 gasket in outer tub cover |

Special Tools



W280P_37950

Special Tools

| REF | PART NO. | DESCRIPTION | COMMENTS |
|-----|----------|------------------------|--|
| 1 | N/A | Shipping Brace | |
| 2 | 321P4 | Spring Hook | For removal of centering springs from outer tub |
| 3 | 291P4 | T-Handle Allen Wrench | For removal and installation of 3 pump assembly attaching screws |
| 4 | 305P4 | Transmission Pin Tool | Use pin tools in place of dowel pins when reassembling transmission cover and case; Two required |
| 5 | 242P4 | Brake Spring Installer | For installing brake spring |
| 6 | 306P4 | Hex Wrench | For removal of locknut from washtub hub |

N/A = Part no longer available

Wire Harnesses and Wires

| PART NO. | DESCRIPTION | COMMENTS |
|----------|-----------------------|--|
| 36278 | Base Harness | Models EA2011*A3000, EA2111*A3000, EA2111*A3059, EA2111*A3069, EA2111*A5400, EA2111*A5406, EA2111*A5412, EA2111*A5417, EA2211*A1200, EA2211*A1300, EA2211*A3000, EA2211*A3066, EA2921*A3000, EA2921*A3059, ZA2111*A3059 and ZA2111*A3069 |
| 36277 | Base Harness | Models EA2011*A3050, EA2111*A3050, EA2921*A3050 and ZA2921*A3059 |
| N/A | Base Harness | All other models |
| 39811 | Timer Harness | Models EA2011*A3000 and EA2011*A3050 |
| 36094 | Timer Harness | Models EA2921*A3000, EA2921*A3050, EA2921*A3059, ZAJ920*A1102, ZAJ921*A1102, ZA2821*A1102, ZA2920*A1102, ZA2921*A1102, ZA2921*A3059, ZA2921*A99F4, ZA3820*A1102 and ZA3821*A1102 |
| 34092 | Timer Harness | Models ZA2020*A1102 and ZA2021*A1102 |
| 29281 | Timer Harness | Models ZA2120*A1102, ZA2121*A1102, ZA2220*A1102 and ZA2221*A1102 |
| 39806 | Timer Harness | All other models |
| 37282 | Hood Harness | Models EA2111*A3069 and ZA2111*A3069 |
| 36093 | Hood Harness | Models EA2921*A3000, EA2921*A3050, EA2921*A3059, ZAJ920*A1102, ZAJ921*A1102, ZA2821*A1102, ZA2920*A1102, ZA2921*A1102, ZA2921*A3059, ZA2921*A99F4, ZA3820*A1102 and ZA3821*A1102 |
| 33805 | Hood Harness | Models ZA2020*A1102 and ZA2021*A1102 |
| 33758 | Hood Harness | Models ZA2120*A1102, ZA2121*A1102, ZA2220*A1102 and ZA2221*A1102 |
| N/A | Hood Harness | All other models |
| 31973 | Lid Lock Harness | Models EA2111*A3059, EA2111*A3069, EA2921*A3059, ZA2111*A3059, ZA2111*A3069 and ZA2921*A3059 |
| 38026 | Security Case Harness | Models ZAJ920*A1102, ZAJ921*A1102 and ZA2921*A99F4 |
| 38191 | Card Reader Harness | Models ZA3820*A1102 and ZA3821*A1102 |
| 45001 | 18 Gauge Wire | Black; Order wire by foot and terminals as required |
| 45380 | 12 Gauge Wire | Orange; Order wire by foot and terminals as required |

* Add Letter To Designate Color. L - Almond W - White

N/A = Part no longer available

NOTE: Individual wires are not available separately. Order complete wire harness, or order wire by the foot. When applying terminals to wires, it is recommended that the terminals be soldered to the wires.

Parts Index

A

| | |
|---------------------|----|
| Actuator Arm | |
| 33441 | 33 |
| Agitator | |
| 33513 | 39 |
| Agitator Hooks | |
| 254P4P | 59 |
| Agitator Pinion | |
| 27003 | 49 |
| Amp Housing | |
| 34675 | 55 |
| 34676 | 55 |
| Anti-Seize Compound | |
| 27604P | 47 |

B

| | |
|--------------------------|--------------------|
| Backflow Preventer | |
| 34500 | 35 |
| Balance Ring | |
| 34731 | 47 |
| Base Assembly | |
| 36599P | 53 |
| Base Harness | |
| 36277 | 62 |
| 36278 | 62 |
| Bearing | |
| 28944R | 51 |
| Bearing Housing Assembly | |
| 27182 | 47 |
| 35746 | 51 |
| Bell Tool | |
| 294P4 | 59 |
| Belt | |
| 28808 | 43 |
| 35517 | 43 |
| Bolt | |
| 29651 | 9 |
| Brace | |
| 35097 | 53 |
| Bracket | |
| 30642 | 15 |
| 35525 | 9, 11, 13, 15 |
| 36036 | 53 |
| 36037 | 53 |
| Brake | |
| 38505P | 51 |
| Brake Pad Kit | |
| 548P3 | 51 |
| Brake Spring Installer | |
| 242P4 | 61 |
| Bumper | |
| 21685 | 29, 31 |
| 32648 | 19, 21, 23, 25, 27 |
| Bumper Pad | |
| 36226 | 53 |
| 56128 | 53 |

| | |
|-------------|--------|
| Bushing | |
| 36474 | 29, 31 |

C

| | |
|-------------------------|----------------------|
| Cabinet Assembly | |
| 38612*P | 53 |
| Cabinet Top | |
| 36122*P | 31 |
| 36273*P | 31 |
| Cable Clip | |
| 21036 | 57 |
| Cap Screw | |
| 02916 | 23 |
| 27202 | 39 |
| Capacitor | |
| 37377 | 43 |
| Capacitor Clamp | |
| 37535 | 43 |
| Card Reader | |
| 39685 | 17 |
| Card Reader Harness | |
| 38191 | 62 |
| Carriage Bolt | |
| 02505 | 5, 9, 11, 13, 15, 17 |
| Centering Spring | |
| 35947 | 41 |
| Clip | |
| 28849 | 43 |
| 36985 | 41 |
| Clothes Guard | |
| 32990 | 39 |
| Clutch | |
| 29503 | 9 |
| Coin Drop | |
| M411605 | 11 |
| M411606 | 11 |
| M411607 | 11 |
| M411608 | 11 |
| M411704 | 11 |
| M411706 | 11 |
| M411707 | 11 |
| M411708 | 11 |
| M411709 | 11 |
| M414549 | 11 |
| 431631 | 11 |
| Coin Drop Front Plate | |
| 501966 | 11 |
| 501978 | 11 |
| Coin Funnel Kit | |
| 523P3 | 9 |
| Connector | |
| 21091 | 57 |
| Control and Shield | |
| 36401P | 25, 27 |
| 38188P | 27 |
| Control Hood | |
| 37075* | 19, 21, 23, 25, 27 |
| Control Hood Rear Cover | |
| 38267 | 23 |

| | |
|---------------------------------|----------------|
| Control Hood Rear Panel | |
| 38267 | 19, 21, 25, 27 |
| Control Knob | |
| 39897 | 21 |
| Control Knob Assembly | |
| 39897 | 19, 23 |
| Control Panel Frame | |
| 36097* | 27 |
| 36521* | 23 |
| Control Panel Frame and Bracket | |
| 36521* | 19, 21 |
| Control Panel Overlay | |
| 32460 | 19 |
| 32549 | 21 |
| 34312 | 19 |
| 35716 | 21 |
| 35960 | 19 |
| 35961 | 19 |
| 36390 | 27 |
| 36971 | 23 |
| 39096 | 27 |
| Cover Plate | |
| 37828 | 29 |
| Cycle Selector Switch | |
| 27762 | 19 |

D

| | |
|-------------------------|--------|
| Director Bracket | |
| 36034 | 29, 31 |
| Double Connector | |
| 29673 | 57 |
| Dowel Pin | |
| 27172 | 49 |
| Drain Hose | |
| 28293 | 45 |
| Drain Hose Elbow | |
| 36990 | 45 |
| Drive Bell and Seal Kit | |
| 39508 | 39 |
| Drive Bell Arms | |
| 294P4A | 59 |
| Drive Bell Bolt | |
| 294P4B | 59 |
| Drive Pinion | |
| 36562 | 49 |
| Dual Coin Drop Assembly | |
| 200578 | 13, 15 |
| 38467 | 13 |
| 38472 | 13 |
| 38517 | 13 |
| 38519 | 13 |
| 38521 | 13 |
| 38522 | 13 |
| 38964 | 13 |
| 39157 | 13 |

E

| | |
|-----------------------|--------|
| Electric Lid Lock Kit | |
| 598P3 | 21, 25 |
| Eyelet Terminal | |
| 00110 | 57 |

| | |
|-------------|----|
| 00113 | 57 |
|-------------|----|

F

| | |
|----------------------|----|
| Fill Hose | |
| 38155 | 35 |
| Flag Terminal | |
| 00120 | 57 |
| Flinger | |
| 27187 | 47 |
| Front Overlay | |
| 38675 | 13 |
| 38676 | 13 |
| 38717 | 13 |
| 39073 | 15 |
| Front Panel Assembly | |
| 34656*P | 53 |

G

| | |
|-------------|---------------|
| Gasket | |
| 26354 | 11, 13, 15 |
| 28094 | 39 |
| 29677 | 29 |
| 30378 | 29 |
| 32857 | 41 |
| 34338 | 29, 31 |
| 35526 | 9, 11, 13, 15 |
| 37526 | 17 |
| 39122 | 39 |
| Grommet | |
| 29175 | 41 |
| 80262 | 31 |
| Ground Clip | |
| 00161 | 57 |
| Guide Lug | |
| 28102 | 53 |
| 56079 | 53 |

H

| | |
|----------------|--------|
| Helix | |
| 27018 | 51 |
| Hex Screw | |
| 27196 | 53 |
| Hex Wrench | |
| 306P4 | 61 |
| Hinge | |
| 27103 | 53 |
| 36437 | 29, 31 |
| 36438 | 29, 31 |
| Hold-Down Clip | |
| 35865 | 53 |
| Hood Harness | |
| 33758 | 62 |
| 33805 | 62 |
| 36093 | 62 |
| 37282 | 62 |
| Hose Clamp | |
| 20211 | 45 |
| 20391 | 45 |
| 29210 | 35 |

| | |
|------------------|----|
| 36801 | 35 |
| 36802 | 45 |
| 39282 | 41 |
| Hose Clip | |
| 36014 | 45 |
| Hose Coupler | |
| 25863 | 45 |
| Hose Support | |
| 36522 | 45 |
| Hub and Seal Kit | |
| 495P3 | 39 |

I

| | |
|---------------------|------------|
| Idler Lever | |
| 37443 | 43 |
| Idler Lever Spring | |
| 37606 | 43 |
| Idler Pulley | |
| 28800 | 43 |
| Idler Shaft | |
| 28802 | 43 |
| Indicator Light | |
| 32463 | 19 |
| 32464 | 19 |
| 32466 | 19 |
| 32518 | 19, 21, 23 |
| 32519 | 19, 21, 23 |
| 38281 | 19, 21, 23 |
| 39536 | 21, 23, 25 |
| Inlet Hose Assembly | |
| 20617 | 35 |
| 20618 | 35 |
| 28330P | 35 |
| 37380 | 35 |
| 37381 | 35 |
| 38349P | 35 |
| Inlet Screen | |
| F270200 | 37 |
| Input Shaft | |
| 34853 | 49 |
| Instruction Overlay | |
| 38348 | 17 |
| Internal Gear | |
| 26577 | 49 |

K

| | |
|-------------|------------|
| Knurled Nut | |
| 24205 | 19, 21, 23 |
| 24206 | 21, 23, 25 |

L

| | |
|--|----|
| Latch | |
| 29674 | 29 |
| Leg Plate | |
| 27926 | 41 |
| Leveling Leg | |
| 34319 | 53 |
| Leveling Leg and Stabilizer Bar Assembly | |
| 34443 | 53 |

| | |
|------------------|------------------------------|
| Lever | |
| 33442 | 33 |
| Lid Lock | |
| 29678 | 29 |
| Lid Lock Control | |
| 37225 | 23 |
| Lid Lock Harness | |
| 31973 | 62 |
| Lid Switch Tool | |
| 272P4 | 59 |
| Loading Door | |
| 200892*P | 29 |
| 200893* | 31 |
| 200893*P | 29 |
| Locking Bracket | |
| 30642 | 9, 11, 13, 17 |
| Locking Rod | |
| 501365 | 11 |
| Locknut | |
| 21899 | 53 |
| 28803 | 43 |
| 29220 | 39 |
| 29786 | 13 |
| 52556 | 27 |
| 52566 | 19, 21, 23, 25, 43 |
| Lockwasher | |
| M400017 | 5, 7, 17, 19, 21, 23, 25, 27 |
| 02431 | 5, 7, 17, 19, 21, 23, 25, 27 |
| 21456 | 5, 49 |
| 21734 | 5 |
| 21735 | 57 |
| 91176 | 19, 21, 23 |

M

| | |
|-------------------------------|--------|
| Magnet | |
| 501453 | 11, 13 |
| Meter Case | |
| 38542*P | 11, 13 |
| 38724* | 15 |
| 524P3* | 9 |
| Meter Case Gasket | |
| 26354 | 9 |
| Mixing Valve Assembly | |
| 34963 | 37 |
| 34997 | 37 |
| Mixing Valve Mounting Bracket | |
| 39407 | 35 |
| Molex Housing | |
| 32746 | 57 |
| 34123 | 57 |
| 34677 | 55 |
| Molex Terminal | |
| 00188 | 55, 57 |
| Motor Assembly | |
| 35030P | 43 |
| 37540 | 43 |
| 37543 | 43 |
| 38034P | 43 |
| 38035P | 43 |
| Motor Mount | |
| 34788 | 43 |
| Motor Mount Post | |
| 34791 | 43 |

| | |
|------------------------|----|
| Motor Mounting Bracket | |
| 37415 | 43 |
| Motor Shield | |
| 34754 | 43 |
| Motor Switch | |
| 35632 | 43 |
| Mounting Bracket | |
| 35867 | 53 |
| Multiplier | |
| 38571 | 15 |

N

| | |
|-------------|---------------|
| Nut | |
| 02788 | 21, 25 |
| 03673 | 57 |
| 20275 | 5 |
| 22001 | 29 |
| 29786 | 9, 11, 15, 17 |
| 29796 | 9 |
| 35423 | 43 |
| 52566 | 5, 7, 17 |
| 52947 | 21, 23, 25 |

O

| | |
|---------------------------------|----|
| Optional Overlay | |
| 38676 | 15 |
| O-Ring | |
| 36472 | 39 |
| Outer Tub | |
| 34439P | 41 |
| Outer Tub Cover | |
| 36025P | 41 |
| Outer Tub Cover and Gasket Tool | |
| 273P4 | 59 |
| Output Shaft | |
| 36570 | 49 |

P

| | |
|-------------------|--------|
| Pivot Dome | |
| 34470 | 51 |
| Plastic Insulator | |
| 70210 | 57 |
| Plate | |
| 29676 | 29 |
| Plug | |
| 34153 | 29, 31 |
| 36511 | 39 |
| Power Cord | |
| 34458 | 57 |
| 36770 | 57 |
| 38362 | 57 |
| 38363 | 57 |
| 39404 | 57 |
| Pressure Bulb | |
| 30907 | 41 |
| Pressure Hose | |
| 39124 | 41 |
| 39125 | 41 |

| | |
|-----------------------|--------------------|
| Pressure Switch | |
| 35889 | 19, 21, 23, 25, 27 |
| Pulley Assembly | |
| 34923 | 51 |
| 35310 | 51 |
| Pump Assembly | |
| 200937P | 43 |
| Pump-to-Elbow Hose | |
| 34581 | 45 |
| Push Button Switch | |
| 55882 | 21, 23, 25 |
| Push-On Clip | |
| 34762 | 21, 25 |
| Push-on Clip | |
| 34762 | 23 |
| Push-to-Start Sticker | |
| 53738 | 5 |

R

| | |
|----------------|-------------------|
| Rack | |
| 31526 | 49 |
| Reduction Gear | |
| 29161 | 49 |
| Retainer Nut | |
| 27222 | 29, 31, 47 |
| 30647 | 9, 11, 13, 15, 17 |
| Retainer Ring | |
| 23748 | 43 |
| 27197 | 49 |
| Rubber Foot | |
| 34318 | 53 |

S

| | |
|--------------|---|
| Screw | |
| Q6695 | 29 |
| 02916 | 5, 7, 17, 19, 21, 25, 27 |
| 20267 | 57 |
| 21720 | 9 |
| 22649 | 29 |
| 23222 | 19, 21, 23, 25, 27 |
| 23962 | 5, 17, 19, 21, 23, 25, 27, 29, 31, 33, 35, 53 |
| 27196 | 31, 53 |
| 27220 | 51 |
| 27328 | 5 |
| 29273 | 49 |
| 32184 | 29 |
| 32814 | 49 |
| 33562 | 35 |
| 34337 | 29, 31 |
| 34565 | 43 |
| 35148 | 53 |
| 35369 | 41, 51 |
| 35528 | 19, 21, 23, 25, 27 |
| 36048 | 7, 9, 11, 13, 15 |
| 36510 | 33 |
| 36639 | 43 |
| 36991 | 47 |
| 39733 | 53 |
| 500226 | 19, 21, 23, 25, 27 |
| 501524 | 17, 25, 27 |
| 503661 | 43 |
| 503673 | 9, 11, 13, 15, 17, 29, 31 |

| | |
|-----------------------------------|-------------------|
| 51778 | 5 |
| 51780 | 53 |
| 52909 | 43, 45 |
| 80399 | 5 |
| Screw and Lockwasher | |
| 23008 | 29, 31 |
| Seal | |
| 36425 | 39 |
| Seal Tool | |
| 293P4 | 59 |
| Sealant | |
| 37577P | 49 |
| Security Case | |
| 38145* | 17 |
| Security Case Harness | |
| 38026 | 62 |
| Service Door | |
| 35798*P | 9, 11, 13, 15, 17 |
| Shield | |
| 38754 | 17 |
| 39744 | 31 |
| Shoulder Bolt | |
| 27229 | 43 |
| Shoulder Screw | |
| 39432 | 39 |
| 502431 | 9 |
| Silicone Lubricant | |
| 26594P | 51 |
| Single Coin Drop Assembly | |
| 38462 | 13 |
| 38463 | 13 |
| 38464 | 13 |
| 38479 | 13 |
| 38963 | 13 |
| Siphon Break Kit | |
| 562P3 | 45 |
| Slide | |
| 26493 | 49 |
| Snubber Pad and Isolator Assembly | |
| 36108 | 53 |
| Spade Terminal | |
| 00112 | 57 |
| 00121 | 55 |
| 00223 | 57 |
| Special Screw | |
| 27030 | 49 |
| Speed Nut | |
| 36020 | 29, 31 |
| Splined Insert | |
| 29728 | 39 |
| Spring | |
| 33435 | 51 |
| 33443 | 33 |
| Spring Hook | |
| 321P4 | 61 |
| Sticker | |
| 24903 | 29 |
| 36592 | 29 |
| 500049 | 41 |
| 500314 | 31 |
| 500316 | 31 |
| 505281 | 29, 31 |
| Strain Relief | |
| 38384 | 29, 31 |

| | |
|---------------|------------|
| Support | |
| 501523 | 23 |
| 56534 | 29, 31 |
| Switch | |
| 33445 | 33 |
| 33527 | 33 |
| 34536 | 11, 13 |
| 34599 | 11, 13 |
| 504570 | 11, 13, 15 |
| Switch Holder | |
| 36497P | 33 |

T

| | |
|-------------------------------|------|
| Terminal | |
| 00116 | 57 |
| 00117 | 57 |
| Terminal and Housing Assembly | |
| 00234 | 57 |
| Terminal Block | |
| 23033 | 57 |
| 23041 | 57 |
| 26163 | 57 |
| 26301 | 57 |
| 26302 | 57 |
| 26708 | 57 |
| Terminal Extractor Tool | |
| 283P4 | 55 |
| T-Handle Allen Wrench | |
| 291P4 | 61 |
| Timer | |
| 28716 | 5 |
| 28719 | 5 |
| Timer Assembly | |
| 31111P | 9 |
| 31504P | 9 |
| 34601P | 9 |
| 34603 | 9 |
| 34604 | 9 |
| 35368P | 9 |
| Timer Bracket | |
| 35249 | 9 |
| Timer Case | |
| 37733* | 5, 7 |
| Timer Harness | |
| 29281 | 62 |
| 34092 | 62 |
| 36094 | 62 |
| 39806 | 62 |
| 39811 | 62 |
| Timer Knob Assembly | |
| 26256 | 5 |
| Timer Plate | |
| 31864* | 5 |
| Torx Bit Holder | |
| 24161 | 59 |
| Torx Screw | |
| 35527 | 53 |
| Transmission Assembly | |
| 34526P | 47 |
| Transmission Case Assembly | |
| 33223P | 49 |
| Transmission Cover Assembly | |
| 38290P | 49 |

| | |
|--|----|
| Transmission Oil 27243P..... | 49 |
| Transmission Pin Tool 305P4..... | 61 |
| Tub-to-Pump Hose 35752..... | 45 |
| T15 Tamper Resistant Bit 281P4..... | 59 |
| T25 Tamper Resistant Bit 282P4..... | 59 |

W

| | |
|---------------------------------------|-------------------|
| Wash Temperature Switch 81799..... | 19, 21, 23 |
| Washer | |
| 20290..... | 35 |
| 21643..... | 29 |
| 23225..... | 5, 17 |
| 26509..... | 49, 51 |
| 27015..... | 51 |
| 29260..... | 49 |
| 29443..... | 43 |
| 30627..... | 5, 17 |
| 35092..... | 49 |
| 35535..... | 51 |
| 35774..... | 9, 11, 13, 29, 31 |
| 35917..... | 9, 11, 13, 29, 31 |
| 52549..... | 43 |
| 81392..... | 43 |
| Washtub | |
| 39252P..... | 39 |
| 39387P..... | 39 |
| Wire Clip | |
| 504034..... | 57 |
| 51291..... | 57 |
| Wire Harness | |
| 38673..... | 15 |
| Wire Harness Kit | |
| 39955P..... | 11, 13 |
| Wire Tie | |
| 55881..... | 57 |
| Wire, 12 Gauge | |
| 45380..... | 62 |
| Wire, 18 Gauge | |
| 45001..... | 62 |
